

SOM-9260M

User Manual

REV. 2.0

Copyright 2017,
EMAC, Inc.

Table of Contents

1. Introduction	2
1.1. Features.....	2
2. Hardware	3
2.1. Specifications.....	3
2.2. Real Time Clock.....	4
2.3. External Connections.....	4
2.3.1. External Bus.....	4
2.3.2. Module specific interface.....	5
2.3.3. JTAG	6
2.3.4. One-Wire/I2C	6
2.3.5. Ethernet	6
2.3.6. SPI.....	7
2.3.7. MCI Multimedia Card	8
2.3.8. Serial Ports.....	8
2.3.9. GPIO	9
2.4. Power Connections.....	11
2.5. Boot Options	11
3. Design Considerations	12
3.1. The EMAC SoM Carrier-SoM-150ES.....	12
3.2. Power.....	12
3.2.1. Legacy	12
3.2.2. Analog Reference.....	12
3.2.3. Shutdown Logic Pins	12
3.2.4. Battery Backup	12
3.2.5. Analog Voltage	13
4. Software.....	14
4.1. Das U-Boot.....	14
4.2. Embedded Linux	14
4.2.1. Linux with Xenomai Real Time Extensions	14
4.2.2. Linux Packages	14
4.2.3. Linux Patches	14
4.3. Qt Creator.....	15
4.4. ARM EABI Cross Compiler.....	15

Disclaimer

EMAC Inc. does not assume any liability arising out of the application or use of any of its products or designs. Products designed or distributed by EMAC Inc. are not intended for, or authorized to be used in, applications such as life support systems or for any other use in which the failure of the product could potentially result in personal injury, death or property damage.

If EMAC Inc. products are used in any of the aforementioned unintended or unauthorized applications, Purchaser shall indemnify and hold EMAC Inc. and its employees and officers harmless against all claims, costs, damages, expenses, and attorney fees that may directly or indirectly arise out of any claim of personal injury, death or property damage associated with such unintended or unauthorized use, even if it is alleged that EMAC Inc. was negligent in the design or manufacture of the product.

EMAC Inc. reserves the right to make changes to any products with the intent to improve overall quality, without further notification.

1. Introduction



This document describes EMAC's SoM-9260M (SBC) module. The SoM-9260M is a System on Module, designed to be compatible with EMAC's 144-pin SODIMM form factor. This module is built around the ATMEL AT91SAM9260 microcontroller, which provides several of its key features.

The SoM-9260M has an onboard Ethernet PHY, 6 serial ports, a RTC, a programmable clock synthesizer, onboard NOR flash, Serial EEPROM, and SDRAM.

In addition to these standard SoM features, the SoM-9260M also features a fast 32-bit core, open source software support, and a wide range of controller IO pins.

1.1. Features

- **Small, 144 pin SODIMM form factor (2.66" x 1.5")**
- **Atmel ARM9 Jazelle AT91SAM9260 200Mhz Processor**
- **10/100BaseT Ethernet with on-board PHY**
- **6 Serial ports, one with full handshake and two with CTS/RTS handshake**
- **2 USB 2.0 (Full Speed) Host ports**
- **1 USB 2.0 (Full Speed) Device port**
- **Up to 128 MB of SDRAM**
- **Up to 64 MB of Resident NOR Flash**
- **128K Bytes of Serial Flash**
- **Battery backed Real Time Clock**
- **SD/MMC Flash Card Interface**
- **2 SPI ports**
- **1 I2S Audio port**
- **Image Sensor Interface (ISI), ITU-R BT 610/656**
- **Timer/Counters and Pulse Width Modulation (PWM) ports**
- **4 Channel 10-bit Analog-to-Digital converter**
- **Typical power requirement less than 1 Watt**
- **JTAG for debug, including real-time trace**
- **FREE Eclipse IDE with GCC and GDB development tools**
- **WinCE 6.0 BSP in development.**

2. Hardware

2.1. Specifications

- **CPU:** Embedded Atmel AT91SAM9260 processor running at 200 MHz.
- **Flash:** 16 MB External NOR Intel P30 Flash and 128K of utility serial Flash.
- **RAM:** 16 MB 100 MHz SDRAM.
- **Flash Disk:** 4-bit Parallel or SPI serial SDHC/MMC interface.
- **System Reset:** Supervisor with external Reset Button provision.
- **RTC:** Real Time Clock/Calendar with battery backed provision using 32-bit free running counter.
- **Timer/Counters:** 2, 3 channel, 16-bit timers/counters with capture, compare, and PWM. 20-bit interval timer plus 12-bit interval counter.
- **Watchdog Timer:** Key-protected, Programmable Only Once, Windowed 16-bit Counter.
- **Digital I/O:** 32 General Purpose I/Os with 16 mA drive when used as an output
- **Analog I/O:** 4 channel, 10-bit Analog-to-Digital converter (ADC)
- **Power:** Power Management Controller allows selectively shutting down on processor I/O functionality and running from a slow clock.

- **JTAG:** JTAG for debug, including real-time trace

- **CLOCKS:** PLL synthesized 8M, 200K, 14.3M clock outputs

Serial Interfaces

- **UARTS:** 6 serial TTL level serial ports with Auto RS485 and some with handshaking (each UART requires external RS level shifting).
- **SPI:** 2 High-Speed SPI ports with Chip Selects.
- **Audio:** I2S Synchronous Serial Controller with analog interface support
- **USB:** Dual USB 2.0 Full Speed Host and single USB 2.0 Full Speed Device ports

Ethernet Interface

- **MAC:** AT91SAM9260 on chip MAC
- **PHY:** Intel/Cortina LXT927ALC with software PHY shutdown control
- **Interface:** IEEE 802.3u 10/100 BaseT Fast Ethernet (requires external magnetics and Jack)

Bus Interface

- Local ARM AT91SAM9260 Bus accessible through SODIMM provides 22 address lines, 16 data bus lines, and control lines.

Mechanical and Environmental

- **Dimensions:** SODIMM form factor with the length dimension extended (2.66" x 1.5")
- **Power Supply Voltage:** +3.3 Volts DC +/- 5%
- **Power Requirements:**
 - Typical 3.3 Volts @ 300 mA (less than 1 watt)
 - Max current draw during boot process: 400 mA
 - Constant busy loop: 380 mA
 - Idle system: 280 mA
 - Idle system with Ethernet PHY disabled: 150 mA

- APM sleep mode with Ethernet PHY disabled: 5 mA
- APM sleep mode with Ethernet PHY enabled: 135 mA
- **Operating Temperature:** -40 ~ 85° C (-40 ~ 185° F), fan-less operation
- **Operating Humidity:** 0%~90% relative humidity, non-condensing

2.2. Real Time Clock

The SoM-9260M emulates a real time clock using the AT91SAM9260's onboard real time timer. Battery backup is provided from the carrier board using the VSTBY pin. The use of an external NOR flash for first boot allows the SoM-9260M to retain the RTT value register during reset and hence use it as a RTC. The RTC has the provision to set Alarms that can interrupt the processor. For example the processor can be placed in sleep mode and then later awakened via the Alarm function.

2.3. External Connections

The SoM-9260M connects to a carrier board containing its connectors, power supply and any expansion IO, through a standard gold-plated SODIMM 144 pin connection (top half shown below).



The SoM model will fit in any standard 144-pin SODIMM socket. These connections are designed to be compatible with all EMAC 144-pin SoM products. See EMAC SoM 144-pin SODIMM Pinout Specification to see how other 144-pin SoMs pin-outs line up with the SoM-9260's pin-out.

The use of the SODIMM form-factor for EMAC's SoMs is a sound choice that has been proven rugged and reliable in the laptop market.

The remainder of this section describes the pin-out as it applies specifically to the SoM-9260M processor.

2.3.1. External Bus

The SoM-9260M provides a flexible external bus for connecting peripherals. The CPLD of the SoM-100ES and SoM-150ES connect through a subset of these connections. The WKUP pin has a Maximum input voltage of 1.8V (pulled up on-module to 1.8V) and Shutdown has a maximum output voltage of 1.8V.

SODIMM Pin#	SoM Pin Name	Processor Pin Name(s)	Description
100	GP_CS1	NCS3/IRQ2/PC14	General Purpose Processor Chip Select CS3
98	GP_CS2	NC	Not Used
108	GP_CS3	NCS4/RTS3/PC8	General Purpose Processor Chip Select CS4
16	~OE	NRD	Read Signal
83	~WR	NWR0/NWE	Write Signal
6	~RST_IN	NRST	Processor Reset
43	~RST_OUT	NRST	Processor Reset

SODIMM Pin#	SoM Pin Name	Processor Pin Name(s)	Description
44	~EA	SHDN	Shutdown Control
85	Flash WP	NC	Not Used
72	ALE/~TS	WKUP	Wake-Up Input
26,35,33,31, 28,109,111, 113,10,12,18, 14,37,5,11,9, 7,13,97,17, 15,104	A0-A21	A0-A18, A23-A25	Address Bus
29,27,25,22, 23,21,19,20, 8,24,34,70, 77,81,84,86	D0-D15	D0-D15	Data Bus

2.3.2. Module specific interface

The SoM-9260M module specific interface brings out several module specific connections from the processor. The interface includes the debug serial port, USB host/device and MMC/SD interfaces. Remember the USB Data lines are differential pairs and need to be routed as such.

SODIMM Pin#	SoM Pin Name	Processor Pin Name(s)	Description
45	MS0	PCK1/PB31	Programmable Clk Output/GPIO
46	MS1	DRXD/PB14	Debug RX/GPIO
47	MS2	DTXD/PB15	Debug TX/GPIO
48	MS3	TXD5/PB12	SER5 TX/GPIO
49	MS4	RXD5/PB13	SER5 RX/GPIO
50	MS5	MCDA0/PA6	MCI A Data0/GPIO
51	MS6	MCCDA/PA7	MCI A Command/GPIO
54	MS7	MCCK/PA8	MCI Clock/GPIO
55	MS8	MCDA1/PA9	MCI A Data1/GPIO
56	MS9	MCDA2/PA10	MCI A Data2/GPIO
57	MS10	MCDA3/PA11	MCI A Data3/GPIO
60	MS11	DDM (USB D)	Device USB
61	MS12	DDP (USB D)	Device USB
64	MS13	HDP A (USB H)	HostA USB
65	MS14	HDP B (USB H)	HostB USB
66	MS15	HDMA (USB H)	HostA USB
67	MS16	HDMB (USB H)	HostB USB

2.3.3. JTAG

The SoM specifications allows for access to the JTAG lines for the AT91SAM9260 processor. These connections will allow the Flash to be programmed in circuit via a program running from the processor and also the capability to debug software.

SODIMM Pin#	SoM Pin Name	Processor Pin Name(s)	Description
139	JTAG_TCK	JTAG_TCK	JTAG clock -> port B0
137	JTAG_TDI	JTAG_TDI	JTAG serial in -> port B1
138	JTAG_TDO	JTAG_TDO	JTAG serial out ->port B2
140	JTAG_TMS	JTAG_TMS	JTAG operation mode ->port B3
112	JTAG_TRST	NTRST	Test Reset Signal

2.3.4. One-Wire/I2C

The SoM specification calls for a one-wire port. Since the SoM-9260M does not have a one-wire port, this line is not connected for One-Wire Operation. The 9260 processor does provide a I2C bus, but it cannot be used as the lines are multiplexed with Ethernet lines.

SODIMM Pin#	SoM Pin Name	Processor Pin Name(s)	Description
116	LOCAL1W/SCL	NC	NC
88	SDA	PHY: LED_LINK/ CFG_0	Ethernet PHY LED/Configuration pin (This pin should be pulled to 3.3V)

Note: The SoM-9260 predates the addition of the I2C provision and provided 3 LED/Configuration pins.

2.3.5. Ethernet

The SoM-9260M provides a Cortina LXT972 Ethernet PHY IC on board. Carrier designers need only run these lines through the appropriate magnetics layer to have a functional Ethernet connection. Remember the RX and TX lines are differential pairs and need to be routed as such.

The LED/configuration pins' state at reset determines the Ethernet's configuration (10-baseT, 100-base-T, autoconfig) and the function of the LED's. The SoM-100ES and the SoM-150ES pull them all high, which configures the chip for network autoconfig, with LED1 functioning as active low link, and LED2 functioning as active low Rx Activity (Refer to Carrier schematics).

SODIMM Pin#	SoM Pin Name	LXT972 Pin Name	Description
88	LED_LINK/ CFG_0	LED_LINK/ CFG_0	Ethernet PHY LED/Configuration pin (This pin should be pulled to 3.3V)
89	LED_LINK/ CFG_1	LED_LINK/ CFG_1	Ethernet PHY LED/Configuration pin
90	LED_RX/ CFG_2	LED_RX/ CFG_2	Ethernet PHY LED/Configuration pin
94	Ethernet_Rx-	Ethernet_Rx-	Low differential Ethernet receive line

SODIMM Pin#	SoM Pin Name	LXT972 Pin Name	Description
92	Ethernet_Rx+	Ethernet_Rx+	High differential Ethernet receive line
93	Ethernet_Tx-	Ethernet_Tx-	Low differential Ethernet transmit line
91	Ethernet_Tx+	Ethernet_Tx+	High differential Ethernet transmit line

2.3.6. SPI

The AT91SAM9260 processor provides a dual (0 and 1) SPI module for communicating with peripheral devices. The SPI0 bus is connected internally to the serial flash, which uses SPI0_NPCS1 (SPI0_NPCS1 is not brought out to the card fingers). The first Table below lists the lines for the #0 SPI module. While the SoM pin specification allows for three SPI chip selects, there are not three available, so GPIO lines are utilized for SPI slave select line SPI_CS1 and SPI_CS2. The second Table below lists the lines for the #1 SPI module.

The SPI pins listed below also can be configured in software as a 4-bit MMC/SD card interface using the MC lines. The AT91SAM9260 processor provides a dual (A and B) MMC/SD SPI module. The MMC/SD B interface lines are listed in the MCI Multimedia Card Table further below.

SODIMM Pin#	SoM Pin Name	Processor Pin Name(s)	Description
122	SPI_MI	SPI0_MI/PA0/MCDB0	SPI0 serial data in
121	SPI_MO	SPI0_MO/PA1/MCCDB	SPI0 serial data out
120	SPI_SCK	SPI0_SCK/PA2	SPI0 serial clock out
123	SPI_CS0	SPI0_CS0/PA3/MCDB3	SPI0 slave select line 0
124	SPI_CS1	PA4/RTS2/MCDB2	SPI0 slave select line 1
110	SPI_CS2	PA5/RTS2/MCDB1	SPI0 slave select line 2

SODIMM Pin#	SoM Pin Name	Processor Pin Name(s)	Description
133	GPIO12	SPI1-MI/TIOA3/PB0	SPI1 serial data in
134	GPIO13	SPI1-MO/TIOB3/PB1	SPI1 serial data out
135	GPIO14	SPI1-SPCK/TIOA4/PB2	SPI1 serial clock out
136	GPIO15	SPI1-CS0/TIOA5/PB3	SPI1 slave select line 0
15	A20	A24/SPI1_CS1/PC5	SPI1 slave select line 1
17	A19	A23/SPI1_CS2/PC4	SPI1 slave select line 2
132	GPIO11	AN3/SPI1-CS3/PC3	SPI1 slave select line 3

Note: A24/SPI1_CS1 and A23/SPI1_CS2 are used for flash addressing. Any Flash larger than 8MB will use A23/SPI1_CS2 and any Flash larger than 16MB will use A24/SPI1_CS1.

2.3.7. MCI Multimedia Card

The AT91SAM9260 processor provides a dual 4-bit MMC/SD card interface using the MC lines. The AT91SAM9260 processor provides a dual (A and B) MMC/SD module. The MMC/SD B lines are shared with SPI0 lines, however they can be used in both functions with software arbitration.

SODIMM Pin#	SoM Pin Name	Processor Pin Name(s)	Description
54	MS7	MCCK/PA8	MCI Clock
51	MS6	MCCDA/PA7	MCIA Command
50	MS5	MCDA0/PA6	MCIA D0
55	MS8	MCDA1/PA9	MCIA D1
56	MS9	MCDA2/PA10	MCIA D2
57	MS10	MCDA3/PA11	MCIA D3

SODIMM Pin#	SoM Pin Name	Processor Pin Name(s)	Description
54	MS7	MCCK/PA8	MCI Clock
121	SPI_MO	SPI0_MO/PA1/MCCDB	MCIB Command
122	SPI_MI	SPI0_MI/PA0/MCDB0	MCIB D0
110	SPI_CS2	PA5/CTS2/MCDB1	MCIB D1
124	SPI_CS1	PA4/RTS2/MCDB2	MCIB D2
123	SPI_CS0	SPI0_CS0/PA3/MCDB3	MCIB D3

Note: Both the MCI A and B interfaces share the same CLK line.

2.3.8. Serial Ports

The SoM-144 pin specification has the provision for 3 serial ports. However, the AT91SAM9260 provides 6 serial ports. The SoM-9260M provides for all 6 serial ports. The 3 additional serial ports are accommodated through the use of alternate SoM pins. Typically, the SoM specification calls for Com0 to be the terminal port, which is the default for both Dallas/Maxim's Tini OS, and μ Clinux. However, USART0 on the 9260 processor provides handshaking pins, which go to waste on a terminal port. For this reason, the default serial console for the SoM-9260M is USART3, which is routed to COMA in the EMAC SoM specification.

SoM Defined Serial Lines

SODIMM Pin#	SoM Pin Name	Processor Pin Name(s)	Description
71	COMA_RXD	RXD3/PB11	SER3 receive/GPIO
73	COMA_TXD	TXD3/PB10	SER3 transmit/GPIO
38	COMB_RXD	RXD1/PB7	SER 1 receive/GPIO
36	COMB_TXD	TXD1/PB6	SER 1 transmit/GPIO
82	COMB_RTS/GPIO	RTS1/PB28	SER 1 RTS/GPIO

SODIMM Pin#	SoM Pin Name	Processor Pin Name(s)	Description
78	COMB_CTS/GPIO	CTS1/PB29	SER 1 CTS/GPIO
103	COMC_RXD	RXD0/PB5	SER 0 receive/GPIO
102	COMC_TXD	TXD0/PB4	SER 0 transmit/GPIO
107	COMC_DSR/GPIO	DSR0/PB22	SER 0 DSR /GPIO
106	COMC_DTR/GPIO	DTR0/PB24	SER 0 DTR/GPIO
76	COMC_RI/GPIO	RI0/PB25	SER 0 RING/GPIO
30	COMC_DCD/GPIO	DCD0/PB23	SER 0 DCD/GPIO
39	COMC_RTS/GPIO	RTS0/PB26	SER 0 RTS/GPIO
79	COMC_CTS/GPIO	CTS0/PB27	SER 0 CTS/GPIO

Note: SoM Pin 30 (COMC_DCD) provides the wrong RS232 polarity due to processor errata. User should invert this signal on carrier to correct this issue if it's to be correctly utilized as DCD. SoM-150ES Carrier does not invert this line. SoM-9G20 Module does invert this line.

Alternate Serial Lines

SODIMM Pin#	SoM Pin Name	Processor Pin Name(s)	Description
46	MS1	DRXD/PB14	Debug receive/GPIO
47	MS2	DTXD/PB15	Debug transmit/GPIO
95	CANRX	RXD2/PB9	SER 2 receive/GPIO
96	CANTX	TXD2/PB8	SER 2 transmit/GPIO
110	SPI_CS2	PA5/CTS2/MCDB1	SER 2 RTS/GPIO
124	SPI_CS1	PA4/RTS2/MCDB2	SER 2 CTS/GPIO
108	GP_CS3	NCS4/RTS3/PC8	SER 3 RTS/GPIO
104	A21	A25/CTS3/PC10	SER 3 CTS/GPIO
49	MS4	RXD5/PB13	SER 5 receive/GPIO
48	MS3	TXD5/PB12	SER 5 transmit/GPIO

Note: The RTS and CTS lines for USART3, while provided, are not recommended for use. CTS3 is shared with A25, which is required for on-module NOR flashes over 32 MB. RTS3 is shared with NCS4, which is used as the chip select for the PLD on the SoM-150ES carrier board.

2.3.9. GPIO

This section provides for the SoM general purpose IO section. All of these pins can be configured to be general-purpose digital ports. They can also be configured to take advantage of several of the functions of the 9260's internal silicon. All of the internal A/D ports are brought out here, as well as all of the available IRQs, the second SPI and the pins for general-purpose timer/counters.

Interrupts:

The AT96SAM9260 is capable of using any GPIO pin as an interrupt as well as the pins that are labeled IRQ.

A/D:

The AT96SAM9260 Analog to Digital pins provides 4 channels of 10-bit resolution with a 4us conversion time. With the enhanced DSP extensions, this can make quite a capable signal processor.

Timer/Counters:

The general-purpose Timer/Counter (TC) module on the AT91SAM9260 is comprised of three 16-bit timers/counters with independently programmable input-capture or output compare lines. These can be used for a wide variety of timed applications, including counters and PWM.

For more information on the AtoD and Timer functions of the AT91SAM9260 processor, users are referred to the TC section of the AT91SAM9260 *User's Manual*.

Module Status LED:

A Green general purpose Status LED is connected to RK0/PB20. The RK0/PB20 processor pin is also GPIO6 (SoM pin# 127).

SODIMM Pin#	SoM Pin Name	Processor Pin Name(s)	Description
75	IRQA/GPIO	IRQ0/NCS7/PC12	Fast IRQ/GPIO
32	IRQB/GPIO	IRQ1/PC15	GP IRQ 0/GPIO
40	IRQC/GPIO0	NC	GP IRQ 1/GPIO
42	IRQD/GPIO1	FIQ/PC13/NCS6	GP IRQ 2/GPIO
87	IRQE/GPIO2	TK0/TCLK3/PB16	SSC TX CLK/TC Ext CLK/GPIO
80	IRQF/GPIO3	TF0/TCLK4/PB17	SSC TX Sync/TC Ext CLK/GPIO
125	GPIO4	TD0/TIOB4/PB18	SSC TX Data/TC Chan I/O/GPIO
126	GPIO5	RD0/TIOB5/PB19	SSC RX Data/TC Chan I/O/GPIO
127	GPIO6	RK0/PB20	SSC RX CLK/GPIO
128	GPIO7	RF0/PB21	SSC RX Sync/GPIO
129	GPIO8	AN0/PC0	Analog Input/GPIO
130	GPIO9	AN1/PC1	Analog Input/GPIO
131	GPIO10	AN2/PC2	Analog Input/GPIO
132	GPIO11	AN3/SPI1-CS3/PC3	Analog Input/SPI CS/GPIO
133	GPIO12	SPI1-MI/TIOA3/PB0	SPI Data In/ TC Chan I/O/GPIO
134	GPIO13	SPI1-MO/TIOB3/PB1	SPI Data Out/ TC Chan I/O/GPIO
135	GPIO14	SPI1-SPCK/TIOA4/PB2	SPI CLK/ TC Chan I/O/GPIO
136	GPIO15	SPI1-CS0/TIOA5/PB3	SPI CS/ TC Chan I/O/GPIO
105	~LDAC/~GPIO	PCK0/PB30	Prog CLK Out/GPIO
114	8MHz	TIOB2/PC6	TC Chan I/O/GPIO
115	200KHz	TIOB1/PC7	TC Chan I/O/GPIO
117	14.3MHz	TIOB0/PC9	TC Chan I/O/GPIO

2.4. Power Connections

The SoM-9260M requires a 3.3V supply for the Bus and I/O voltages. The 1.8V core voltage is regulated on module from the 3.3V. The on processor RTC also requires 1.8V and is also regulated down from the 3.3V VSTBY pin. Unlike some other modules no other supply voltage other than 3.3V is required.

SODIMM Pin#	SoM Pin Name	Processor Pin Name(s)	Description
3,4,141,142	3.3VCC	3.3VCC	3.3 Volt voltage core to the processor
1,2,52,53,58,59,62,63,68,69,143,1,144	GND	GND	Ground
119	VSTBY	VDDBU battery backup	Voltage standby, this is the backup voltage provided to the internal RTC of the processor. If RTC readings are not important for the application, this can be attached to the 3.3V rail.
118	ALT_VCC	Not Used	Not Required
101	AV_VCC	Not Used	Analog power. This is not required for the SoM-9260M
99	V_REF	Not Used	No external Analog Reference voltage is required for the SoM-9260. An on-module 2.5V reference (ADR535BRT) is provided. Analog input range is therefore 0 to 2.5V.

2.5. Boot Options

The SoM specification provides two pins for boot time configuration. On the SoM-9260M, these are BMS and Flash Disable. The Boot Mode Select (BMS) pin allows the SoM-9260 to be booted from either its internal ROM or the external NOR flash. The Flash Disable pin should be tied to GND to enable the NOR Flash.

SODIMM Pin#	SoM Pin Name	Processor Pin Name(s)	Description
41	BOOT_OPTION1	BMS	Boot Mode Select
74	BOOT_OPTION2	Flash Disable	NOR Flash Disable

3. Design Considerations

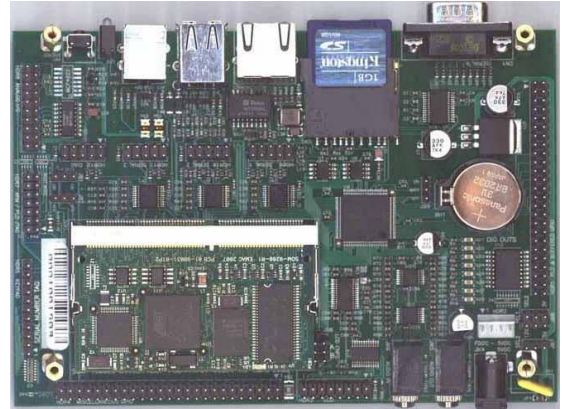
One of the goals of the SoM-9260 is to provide a modular, flexible and inexpensive solution capable of delivering high-end microcontroller performance.

3.1. The EMAC SoM Carrier-SoM-150ES

EMAC provides an off the shelf carrier for the SoM-9260 module, the SoM-150ES, which provides power to SoM modules and provides them with an extended range of I/O. This board comes with full schematics and BOM, and can be used as is, or as a reference for a customer's own design.

www.emacinc.com/products/system_on_module/SoM-150ES

EMAC also offers a semi-custom engineering service. By modifying an existing design, EMAC can offer quick-turn, low-cost engineering, for your specific application.



3.2. Power

The SoM-9260M requires a voltage of 3.3V at 300mA. For a bare-bones population, users can get away with using only 3.3V, and simply provide this to all the voltage inputs listed in Power Connections section. This however, will not provide battery backup for the RTC. Additionally, 5V is required if USB Host capability is required.

3.2.1. Legacy

ALT_VCC is a legacy connection, required to support the SoM-400EM and may be used in future SoM modules. If general SoM compatibility is not an issue then this can be tied to 3.3V. The SoM-9260 does not use this connection.

3.2.2. Analog Reference

No external Analog Reference voltage is required for the SoM-9260. An on-module 2.5V reference (ADR535BRT) is provided. Analog input range is therefore 0 to 2.5V.

3.2.3. Shutdown Logic Pins

The SHDN is a digital output only (0 to 1.8 V, pulled up on-module), which is driven by the Shutdown Controller on the processor. The WKUP pin has a Maximum input voltage of 1.8V. Both of these pins are connected directly to the processor.

3.2.4. Battery Backup

The SoM-9260M contains 3 potentially non-volatile memory areas, the NOR flash, the real time clock, and the serial flash of the processor. The flash is always non-volatile, the real time clock requires a backup voltage to maintain its data. This backup voltage comes from the VSTBY pin, and should be connected to 3.3 volts.

The RTC will draw approximately 10 uA when the processor is not powered by the 3.3V supply. When the module is powered no current is drawn from the backup battery supply. If the RTC is not needed, this can be tied to 3.3V.

The SoM-100ES and SoM-150ES provide battery backup voltage through a socketable BR2032, which is a standard 3V 190mA/H 20MM coin battery that can be picked up from most electronics stores.

3.2.5. Analog Voltage

When designing power for the Analog subsystem there are 4 major considerations, range and accuracy output drive, and rise time.

- **Range**

The AV_VCC pins provide the range. These pins provide power to the analog subsystem, and can take any voltage from 3.0 to 3.6Volts. The power supplied to the analog subsystem limits the range of voltages that can be accurately measured. The internal analog converters cannot measure a voltage higher than their power rail. The Analog input range is 0 to 2.5V. Note if the AV_ACC is powered with less than 3.3V, the full 0 to 2.5V span may not be had.

- **Accuracy**

The accuracy of the A/D converters is determined by the V_REF pin, which provides the reference voltage to the analog subsystem. The stability of the voltage between this pin and ground will affect the accuracy of the subsystem's measurements. No external Analog Reference voltage is required for the SoM-9260. An on-module 2.5V reference (ADR535BRT) is provided. Analog input range is therefore 0 to 2.5V.

4. Software

The SoM-9260M offers a wide variety of software support from both open source and proprietary sources. The hardware core was designed to be software compatible with the Atmel AT91SAM9260-EK reference design, which is supported by Linux and WinCE 6.0.

For more information on Linux Software Support, please visit the EMAC Wiki Software Section at:

http://wiki.emacinc.com/wiki/Main_Page?prodNum=som-9260

4.1. Das U-Boot

EMAC utilizes Das U-Boot for its ARM based products. U-Boot is an open source/cross-architecture platform independent bootloader. It supports reading and writing to the flash, auto-booting, environmental variables, and TFTP. Das U-boot can be used to upload and run and/or reflash the OS or to run stand-alone programs without an OS. Products are shipped with a valid MAC address installed in flash in the protected U-boot environmental variable “ethaddr”. At boot time U-Boot automatically stores this address in a register within the MAC, which effectively provides it to any OS loaded after that point.

4.2. Embedded Linux

EMAC Open Embedded Linux (EMAC OE Linux) is an open source Linux distribution for use in embedded systems. The EMAC OE Linux Build is based on the Open Embedded (www.openembedded.org) and Yocto (www.yoctoproject.org) Linux build system. Open Embedded is a superior Linux distribution for embedded systems. Custom Linux builds are also available on request.

The distribution contains everything a user could expect from a standard Linux kernel: powerful networking features, advanced file system support, security, debugging utilities, and countless other features.

The basic root file system includes:

- Busybox
- Hotplugging support
- APM utilities for power management
- Openssh SSH server
- lighttpd HTTP server
- JFFS2 or EXT4 file system with utilities

4.2.1. Linux with Xenomai Real Time Extensions

Xenomai provides real time extensions to the kernel and can be used to schedule tasks with hard deadlines and μ s latencies. The Xenomai build is an additional module that can be added to the standard Linux kernel and is available for a one-time inexpensive support/installation fee.

<http://www.xenomai.org/>

4.2.2. Linux Packages

EMAC provides support for many Linux Packages such as: PHP, SQLite, Perl, SNMP, DHCP Server, etc. As with the Xenomai Package, other Packages can be added to the standard Linux file system and are available for a one-time inexpensive support/installation fee.

4.2.3. Linux Patches

In addition to standard Embedded Linux support, EMAC has released a number of patches and device drivers from the open source community and from internal EMAC engineering into its standard distribution. Along with kernel patches, EMAC provides the binaries for the kernel and root file system.

4.3. Qt Creator

Qt Creator is a cross-platform IDE (Integrated Development Environment) tailored to the needs of Qt developers but works well for Headless applications as well. EMAC provides sample code as projects that can be imported into Qt Creator. Qt Creator supports remote deployment and source debugging.

<http://wiki.qt.io/Main>

4.4. ARM EABI Cross Compiler

The popular open source gcc compiler has a stable build for the ARM family. EMAC uses the 4.9.1 version of the ARM EABI compiler. The Embedded Linux kernel and EMAC Qt Creator projects use this compiler for building ARM stand alone, and OS specific binaries. The EMAC Qt Creator provides source level debugging over Ethernet or serial using gdbserver. The Linux binaries for the ARM EABI cross compiler are available online along with the SDK. See the EMAC wiki for further information.