

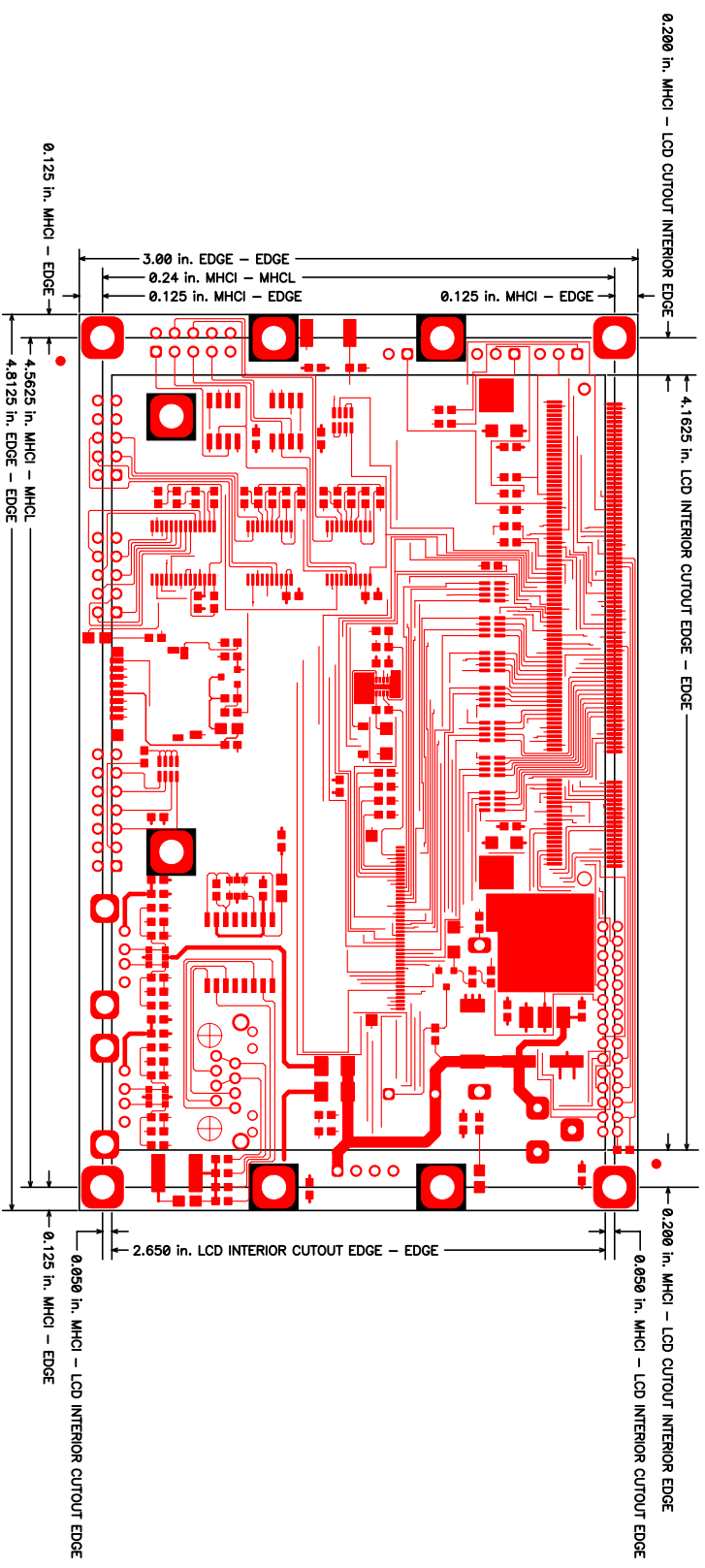
REPORT ORIGIN GLOBAL FIDO AT 2550.0 , 2500.0

- ⊕ PH1
- ⊕ MOUNTING SPACER
- ⊕ ETX MODULE MOUNTING STANDOFF
- ⊕ 03-0411
- ⊕ PH2
- ⊕ MOUNTING SPACER
- ⊕ ETX MODULE MOUNTING STANDOFF
- ⊕ 03-0411
- ⊕ PCB1
- ⊕ PCB BLANK SOM210ES
- ⊕ 01-90049-R1
- ⊕ JP1
- ⊕ Header Jumper
- ⊕ 02-0700
- ⊕ JP2
- ⊕ Header Jumper
- ⊕ 02-0700
- ⊕ OPT0
- ⊕ Always Populated
- ⊕ OPT99
- ⊕ Not Populated

Drill Table			
Hole Dia (Inch)	Symbol	Quantity	Plated
0.010	+	410	Yes
0.036	X	108	Yes
0.042	Y	4	Yes
0.054	Z	2	Yes
0.062	X	3	Yes
0.094	M	4	Yes
0.126	D	16	Yes

Title		SOM-210ES	
Size	Number	Rev	
A	FOR 01-90049-R1 PCB	1.00.00	
Date	Drawn by		
01/14/09 - 03/15/2010	SPIKE		
Filename SOM-210ES_R1.01.00.pcb			

PCB PERIMETER AND PRINCIPAL MOUNTING PADS CENTER DIMENSIONING



Title
SOM-210ES

Size
A

Number
FOR 01-90049-R1 PCB

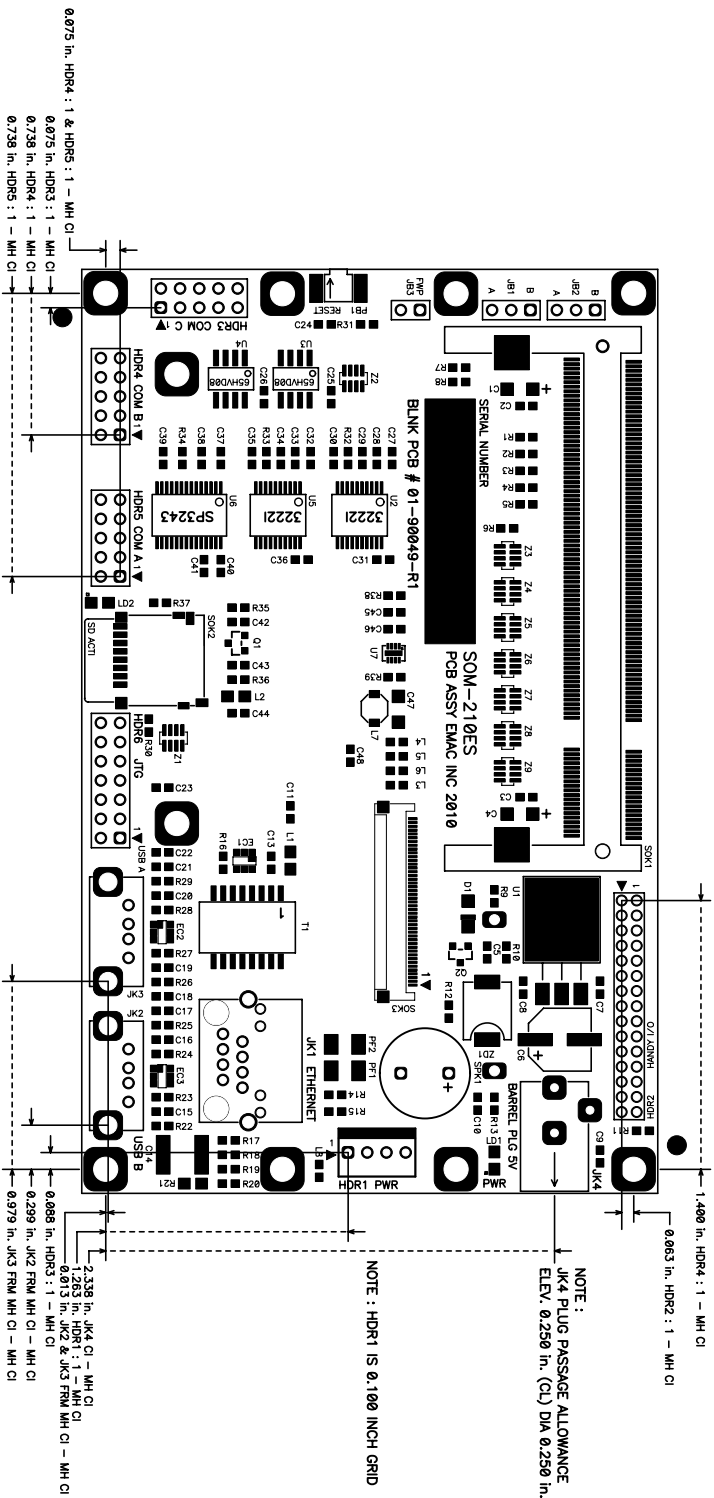
Date
01/14/09 - 03/15/2010

Filename
SOM-210ES_R1.01.00.pcb

Drill Table

Hole Dia (Inch)	Symbol	Quantity	Plated
0.010	+	410	Yes
0.036	X	108	Yes
0.042	Y	4	Yes
0.054	T	2	Yes
0.062	Z	3	Yes
0.094	M	4	Yes
0.126	D	16	Yes

SELECTED LANDMARKS DIMENSIONED RELATIVE TO PCB MOUNTING PAD CENTERS



Drill Table

Hole Dia (Inch)	Symbol	Quantity	Picked
0.010	+	410	Yes
0.036	X	108	Yes
0.042	Y	4	Yes
0.054	^	2	Yes
0.062	z	3	Yes
0.094	M	4	Yes
0.126	D	16	Yes

Title SOM-210ES

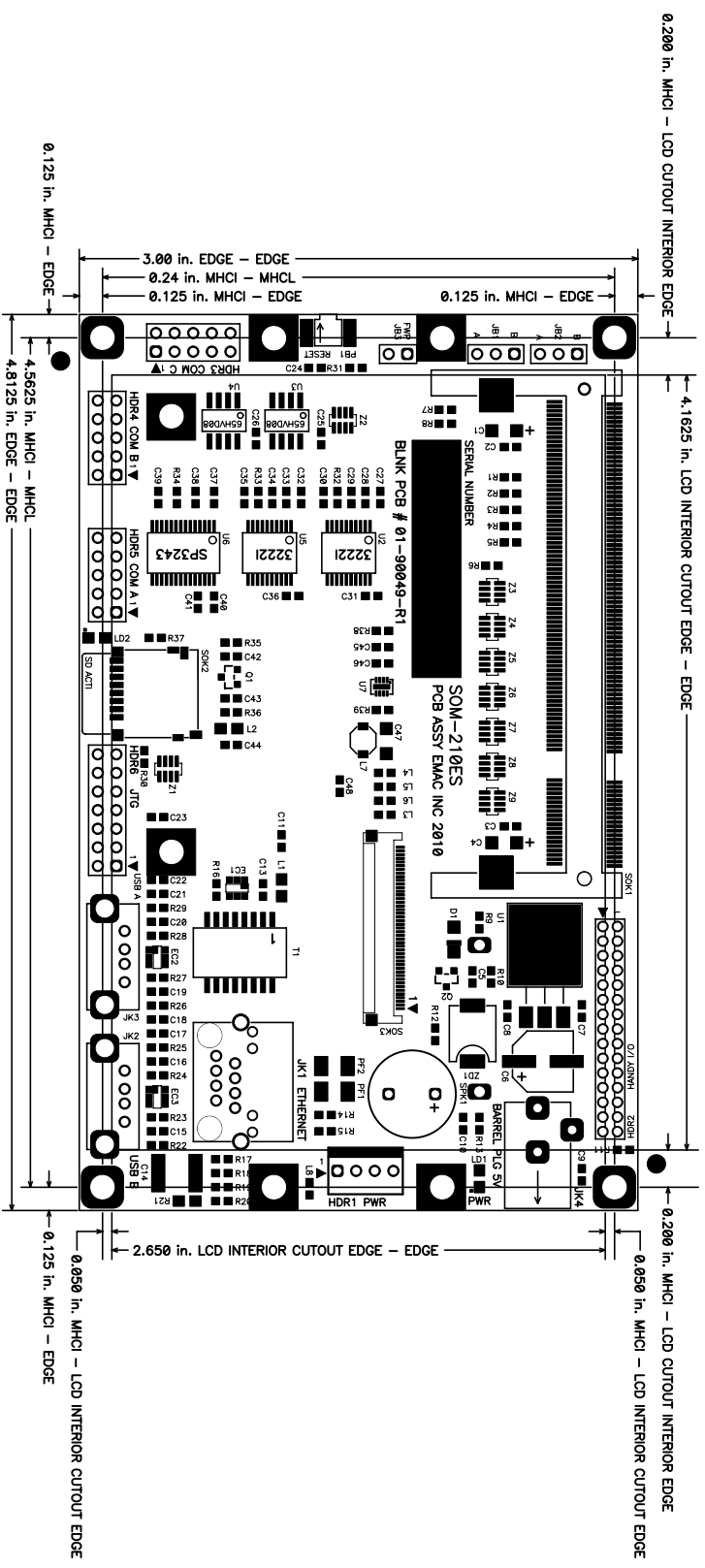
Size Number FOR 01-90049-R1 PCB

Date 01/14/09 - 03/15/2010 Drawn by SPIKE

Filename SOM-210ES_R1.01.00.pcb

Rev 1.00.00

PCB PERIMETER AND PRINCIPAL MOUNTING PADS CENTER DIMENSIONING



Drill Table

Hole Dia (Inch)	Symbol	Quantity	Plated
0.010	+	410	Yes
0.036	X	108	Yes
0.042	Y	4	Yes
0.054	T	2	Yes
0.062	Z	3	Yes
0.094	M	4	Yes
0.126	D	16	Yes

Title		SOM-210ES	
Size	Number	FOR 01-90049-R1 PCB	Rev
A			1.00.00
Date	01/14/09 - 03/15/2010		Drawn by
	Filename SOM-210ES_R1.01.00.pcb		SPIKE