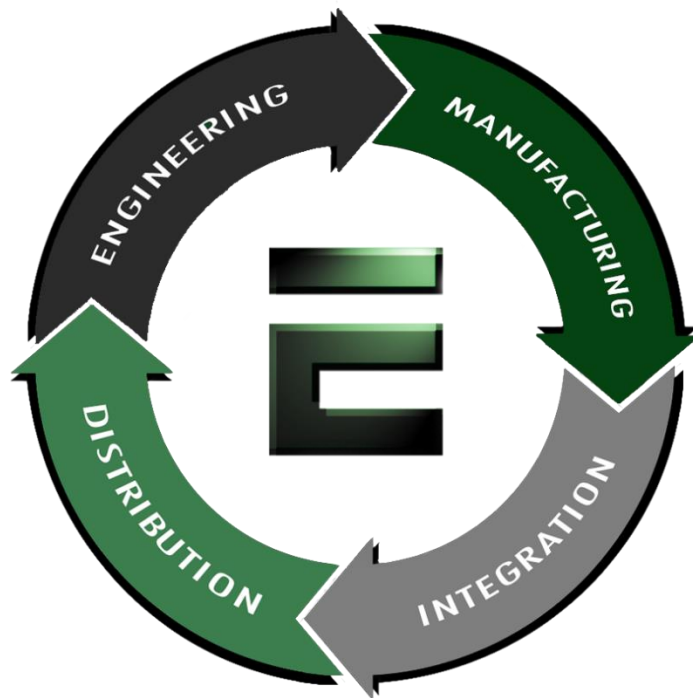


Our Products Make Your Product Better®

Click here to: [learn more about EMAC's products and services and how they can help your project](#)



Authorized Distributor, Integrator and Value-Added Reseller

Manual and Datasheets available at: <ftp.emacinc.com>

For purchase information please contact info@emacinc.com

For Technical Support Services please submit a ticket at www.emacinc.com/support/



User Manual

SOM-6869

COM Express Compact Module

ADVANTECH

Enabling an Intelligent Planet

Copyright

The documentation and the software included with this product are copyrighted 2017 by Advantech Co., Ltd. All rights are reserved. Advantech Co., Ltd. reserves the right to make improvements in the products described in this manual at any time without notice. No part of this manual may be reproduced, copied, translated or transmitted in any form or by any means without the prior written permission of Advantech Co., Ltd. Information provided in this manual is intended to be accurate and reliable. However, Advantech Co., Ltd. assumes no responsibility for its use, nor for any infringements of the rights of third parties, which may result from its use.

Acknowledgements

Intel and Pentium are trademarks of Intel Corporation.

Microsoft Windows and MS-DOS are registered trademarks of Microsoft Corp.

All other product names or trademarks are properties of their respective owners.

Product Warranty (2 years)

Advantech warrants to you, the original purchaser, that each of its products will be free from defects in materials and workmanship for two years from the date of purchase.

This warranty does not apply to any products which have been repaired or altered by persons other than repair personnel authorized by Advantech, or which have been subject to misuse, abuse, accident or improper installation. Advantech assumes no liability under the terms of this warranty as a consequence of such events.

Because of Advantech's high quality-control standards and rigorous testing, most of our customers never need to use our repair service. If an Advantech product is defective, it will be repaired or replaced at no charge during the warranty period. For out-of-warranty repairs, you will be billed according to the cost of replacement materials, service time and freight. Please consult your dealer for more details.

If you think you have a defective product, follow these steps:

1. Collect all the information about the problem encountered. (For example, CPU speed, Advantech products used, other hardware and software used, etc.) Note anything abnormal and list any onscreen messages you get when the problem occurs.
2. Call your dealer and describe the problem. Please have your manual, product, and any helpful information readily available.
3. If your product is diagnosed as defective, obtain an RMA (return merchandise authorization) number from your dealer. This allows us to process your return more quickly.
4. Carefully pack the defective product, a fully-completed Repair and Replacement Order Card and a photocopy proof of purchase date (such as your sales receipt) in a shippable container. A product returned without proof of the purchase date is not eligible for warranty service.
5. Write the RMA number visibly on the outside of the package and ship it prepaid to your dealer.

Declaration of Conformity

CE

This product has passed the CE test for environmental specifications. Test conditions for passing included the equipment being operated within an industrial enclosure. In order to protect the product from being damaged by ESD (Electrostatic Discharge) and EMI leakage, we strongly recommend the use of CE-compliant industrial enclosure products.

FCC Class B

Note: This equipment has been tested and found to comply with the limits for a Class B digital device, pursuant to part 15 of the FCC Rules. These limits are designed to provide reasonable protection against harmful interference in a residential installation. This equipment generates, uses and can radiate radio frequency energy and, if not installed and used in accordance with the instructions, may cause harmful interference to radio communications. However, there is no guarantee that interference will not occur in a particular installation. If this equipment does cause harmful interference to radio or television reception, which can be determined by turning the equipment off and on, the user is encouraged to try to correct the interference by one or more of the following measures:

- Reorient or relocate the receiving antenna.
- Increase the separation between the equipment and receiver.
- Connect the equipment into an outlet on a circuit different from that to which the receiver is connected.
- Consult the dealer or an experienced radio/TV technician for help.

FM

This equipment has passed the FM certification. According to the National Fire Protection Association, work sites are classified into different classes, divisions and groups, based on hazard considerations. This equipment is compliant with the specifications of Class I, Division 2, Groups A, B, C and D indoor hazards.

Technical Support and Assistance

1. Visit the Advantech website at <http://support.advantech.com> where you can find the latest information about the product.
2. Contact your distributor, sales representative, or Advantech's customer service center for technical support if you need additional assistance. Please have the following information ready before you call:
 - Product name and serial number
 - Description of your peripheral attachments
 - Description of your software (operating system, version, application software, etc.)
 - A complete description of the problem
 - The exact wording of any error messages

Warnings, Cautions and Notes

Warning! *Warnings indicate conditions, which if not observed, can cause personal injury!*



Caution! *Cautions are included to help you avoid damaging hardware or losing data. e.g.*



There is a danger of a new battery exploding if it is incorrectly installed. Do not attempt to recharge, force open, or heat the battery. Replace the battery only with the same or equivalent type recommended by the manufacturer. Discard used batteries according to the manufacturer's instructions.

Note! *Notes provide optional additional information.*



Document Feedback

To assist us in making improvements to this manual, we would welcome comments and constructive criticism. Please send all such - in writing to: support@advan-tech.com

Packing List

Before setting up the system, check that the items listed below are included and in good condition. If any item does not accord with the table, please contact your dealer immediately.

- SOM-6869 CPU module
- 1960080793T000 Heatspreader for N4200, N3350 CPU SKU
- 1960080792T000 Heatspreader for E3950, E3940, E3930 CPU SKU

Safety Instructions

1. Read these safety instructions carefully.
2. Keep this User Manual for later reference.
3. Disconnect this equipment from any AC outlet before cleaning. Use a damp cloth. Do not use liquid or spray detergents for cleaning.
4. For plug-in equipment, the power outlet socket must be located near the equipment and must be easily accessible.
5. Keep this equipment away from humidity.
6. Put this equipment on a reliable surface during installation. Dropping it or letting it fall may cause damage.
7. The openings on the enclosure are for air convection. Protect the equipment from overheating. **DO NOT COVER THE OPENINGS.**
8. Make sure the voltage of the power source is correct before connecting the equipment to the power outlet.

9. Position the power cord so that people cannot step on it. Do not place anything over the power cord.
10. All cautions and warnings on the equipment should be noted.
11. If the equipment is not used for a long time, disconnect it from the power source to avoid damage by transient overvoltage.
12. Never pour any liquid into an opening. This may cause fire or electrical shock.
13. Never open the equipment. For safety reasons, the equipment should be opened only by qualified service personnel.
14. If one of the following situations arises, get the equipment checked by service personnel:
 - The power cord or plug is damaged.
 - Liquid has penetrated into the equipment.
 - The equipment has been exposed to moisture.
 - The equipment does not work well, or you cannot get it to work according to the user's manual.
 - The equipment has been dropped and damaged.
 - The equipment has obvious signs of breakage.
15. DO NOT LEAVE THIS EQUIPMENT IN AN ENVIRONMENT WHERE THE STORAGE TEMPERATURE MAY GO BELOW -20° C (-4° F) OR ABOVE 60° C (140° F). THIS COULD DAMAGE THE EQUIPMENT. THE EQUIPMENT SHOULD BE IN A CONTROLLED ENVIRONMENT.
16. CAUTION: DANGER OF EXPLOSION IF BATTERY IS INCORRECTLY REPLACED. REPLACE ONLY WITH THE SAME OR EQUIVALENT TYPE RECOMMENDED BY THE MANUFACTURER, DISCARD USED BATTERIES ACCORDING TO THE MANUFACTURER'S INSTRUCTIONS.

The sound pressure level at the operator's position according to IEC 704-1:1982 is no more than 70 dB (A).

DISCLAIMER: This set of instructions is given according to IEC 704-1. Advantech disclaims all responsibility for the accuracy of any statements contained herein.

Safety Precaution - Static Electricity

Follow these simple precautions to protect yourself from harm and the products from damage.

- To avoid electrical shock, always disconnect the power from your PC chassis before you work on it. Don't touch any components on the CPU card or other cards while the PC is on.
- Disconnect power before making any configuration changes. The sudden rush of power as you connect a jumper or install a card may damage sensitive electronic components.

Contents

Chapter 1 General Information1

1.1	Introduction	2
1.2	Functional Block Diagram	4
1.3	Product Specification	5
1.3.1	Compliance	5
1.3.2	Feature List	5
1.3.3	Processor System	6
1.3.4	Memory	6
1.3.5	Graphics	6
1.3.6	Display Interface	7
1.3.7	Multiple-Display	7
1.3.8	Expansion Interface	8
1.3.9	Serial Bus	8
1.3.10	I/O	8
1.3.11	Power Management	9
1.3.12	Environment	10
1.3.13	MTBF	10
1.4	Advantech Embedded Software Services	10
1.4.1	Advantech iManager	10
1.4.2	Advantech WISE-PaaS/RMM	10

Chapter 2 Mechanical Information13

2.1	Board Information	14
	Figure 2.1 Board chips identify – Front	14
	Figure 2.2 Board chips identify – Front	14
	Figure 2.3 Board chips identify – Back	15
2.2	Mechanical Drawing	16
	Figure 2.4 Board Mechanical Drawing – Front	16
	Figure 2.5 Board Mechanical Drawing - Front	16
	Figure 2.6 Board Mechanical Drawing – Back	17
	Figure 2.7 Board Mechanical Drawing – Side	17
2.3	Assembly Drawing	18
	Figure 2.8 Assembly Drawing	18
2.4	Assembly Drawing	19
	Figure 2.9 Main Chip Height and Tolerance	19
	Figure 2.10 Main Chip Height and Tolerance	19

Chapter 3 AMI BIOS21

3.1	Introduction	22
	Figure 3.1 Setup program initial screen	22
3.2	Entering Setup	23
3.2.1	Main Setup	23
	Figure 3.2 Main setup screen	23
3.2.2	Advanced BIOS Features Setup	24
	Figure 3.3 Advanced BIOS features setup screen	24
	Figure 3.4 ACPI Settings	25
	Figure 3.5 ACPI Settings	26
	Figure 3.6 Embedded Controller	27
	Figure 3.7 Serial Port 1 Configuration	28
	Figure 3.8 Serial Port 2 Configuration	29
	Figure 3.9 Hardware Monitor	30

3.2.3	W83627DHGSEC Super IO Configuration	31
	Figure 3.10W83627DHGSEC Super IO Configuration	31
	Figure 3.11Serial Port 3 Configuration	32
	Figure 3.12Serial Port 4 Configuration	33
	Figure 3.13Parallel Port Configuration	34
	Figure 3.14Serial Port Console Redirection	35
	Figure 3.15Legacy Console Redirection Settings	36
	Figure 3.16CPU Configuration	37
	Figure 3.17Socket 0 CPU Configurations.....	38
	Figure 3.18Socket 0 CPU Configurations.....	39
	Figure 3.19Network Stack Configuration	40
	Figure 3.20CSM Configuration	41
	Figure 3.21NVMe Configuration	42
	Figure 3.22USB Configuration.....	43
	Figure 3.23Platform Trust Technology	44
	Figure 3.24Security Configuration	45
3.2.4	Chipset.....	46
	Figure 3.25Chipset Setup.....	46
	Figure 3.26North Bridge	47
	Figure 3.27South Bridge.....	48
	Figure 3.28Uncore Configuration	49
	Figure 3.29South Cluster Configuration	50
	Figure 3.30HD-Audio Configuration	51
	Figure 3.31PCI Express Configuration	52
	Figure 3.32LAN	54
	Figure 3.33PCI Express Root Port 0 Configuration	55
	Figure 3.34PCI Express Root Port 1 Configuration	56
	Figure 3.35PCI Express Root Port 2 Configuration	57
	Figure 3.36PCI Express Root Port 3 Configuration	58
	Figure 3.37PCI Express Root Port 4 Configuration	59
	Figure 3.38SATA Drives.....	60
	Figure 3.39SCC Configuration	61
	Figure 3.40USB Configuration.....	62
	Figure 3.41Miscellaneous Configuration	63
3.2.5	Security Setting.....	64
	Figure 3.42Security Setup	64
3.2.6	Boot Settings	65
	Figure 3.43Boot Setting.....	65
3.2.7	Save & Exit	66
	Figure 3.44Save & Exit.....	66

Chapter 4 S/W Introduction & Installation..... 67

4.1	S/W Introduction	68
4.2	Driver Installation	68
	4.2.1 Windows Driver Setup	68
	4.2.2 Other OS.....	68
4.3	Advantech iManager	68

Appendix A Pin Assignment..... 71

A.1	SOM-6869 Type 6 Pin Assignment.....	72
-----	-------------------------------------	----

Appendix B Watchdog Timer..... 77

B.1	Programming the Watchdog Timer	78
-----	--------------------------------------	----

Appendix C

Appendix D

Programming GPIO

System Assignments

79

81

C.1

D.1

D.2

D.3

GPIO Register

System I/O Ports

Interrupt Assignments

1st MB Memory Map

Table D.1: System I/O ports

Table D.2: Interrupt Assignments

Table D.3: 1st MB Memory Map

80

82

83

84

82

83

84

84

Chapter 1

General Information

This chapter gives background information on the SOM-6869 COM Express Compact CPU Module.

Sections include:

- Introduction
- Functional Block Diagram
- Product Specification

1.1 Introduction

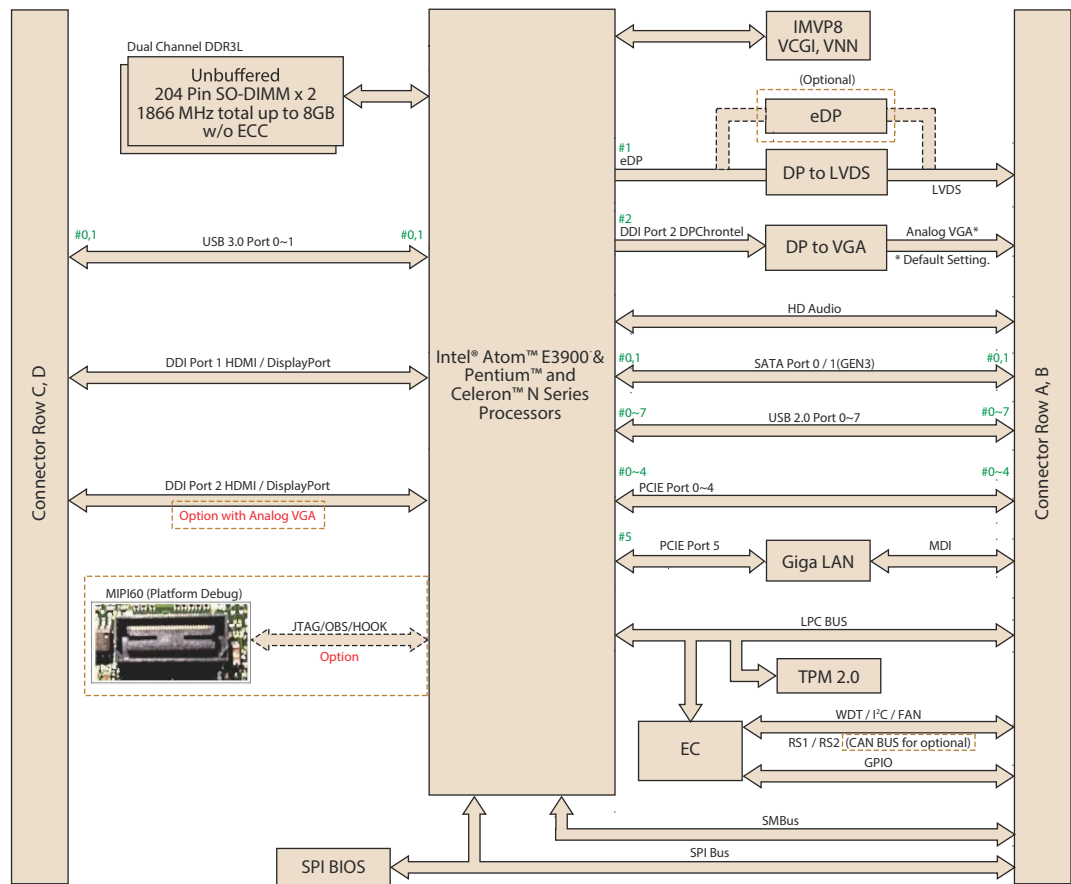
SOM-6869 is a COM Express Compact module with type 6 pin-out that fully complies with the PICMG (PCI Industrial Computer Manufacturers Group) COM.0 R2.1 specification. The CPU module uses the new 14nm leading-edge low-power SoC in a basic size 95x95mm COM Express form factor. SOM-6869 features a 15 watt thermal design power (TDP) rating and is equipped with a power-saving ULV-SoC. SOM-6869 supports up to 8GB dual channel DDR3L 1866 non-ECC, with higher memory bandwidth for better performance. To compare with previous platforms, SOM-6869 has a better +45% graphics performance, and +30% CPU performance enhancements. SOM-6869 is equipped with an integrated Intel Gen 9 low power (LP) graphics and media encode decode engine, supplying up to three independently operated 4K displays. It also supports hardware accelerated video decoding for HEVC, H.264, MVC, VP8, VP9, MPEG2, VC-1, WMV9, JPEG and MJPEG. SOM-6869 I/O includes 5 x PCIe x1, 2 x SATA Gen3.1, 2 x USB 3.0, and 8 x USB 2.0. In addition, SOM-6869 adds one mounting hole around the processor to strengthen the board structure to avoid board bending.

Advantech iManager was designed to satisfy all kinds of embedded application requirements such as multi-level watchdog timer, voltage and temperature monitoring, and thermal protection through processor throttling, as well as LCD backlight on/off, brightness control, and embedded storage information. Combined with Advantech SUSI Access, it can remotely monitor and control devices via the internet for easy maintenance. All Advantech COM Express modules integrate iManager and SUSI Access. SOM-6869 is suitable for computing intensive, thermal sensitive, graphics/media intensive, and I/O demanding applications.

Acronyms

Term	Define
AC'97	Audio CODEC (Coder-Decoder).
ACPI	Advanced Configuration Power Interface – standard to implement power saving modes in PC-AT systems.
BIOS	Basic Input Output System – firmware in PC-AT systems that is used to initialize system components before handing control over to the operating system.
CAN	Controller-area network (CAN or CAN-bus) is a vehicle bus standard designed to allow micro controllers to communicate with each other within a vehicle without a host computer.
DDI	Digital Display Interface – containing DisplayPort, HDMI/DVI, and SDVO.
EAPI	Embedded Application Programmable Interface Software interface for COM Express® specific industrial function <ul style="list-style-type: none"> – System information – Watchdog timer – I2C Bus – Flat Panel brightness control – User storage area – GPIO
GbE	Gigabit Ethernet
GPIO	General purpose input output
HDA	Intel High Definition Audio (HD Audio) refers to the specification released by Intel in 2004 for delivering high definition audio that is capable of playing back more channels at higher quality than AC'97.
I2C	Inter Integrated Circuit – 2 wire (clock and data) signaling scheme allowing communication between integrated circuit, primarily used to read and load register values.
ME	Management Engine.
PC-AT	“Personal Computer – Advanced Technology” – an IBM trademark term used to refer to Intel based personal computer in 1990s.
PEG	PCI Express Graphics.
RTC	Real Time Clock – battery backed circuit in PC-AT systems that keeps system time and date as well as certain system setup parameters.
SPD	Serial Presence Detect – refers to serial EEPROM on DRAMs that has DRAM Module configuration information.
TPM	Trusted Platform Module, chip to enhance the security features of a computer system.
UEFI	Unified Extensible Firmware Interface.
WDT	Watch Dog Timer.

1.2 Functional Block Diagram



1.3 Product Specification

1.3.1 Compliance

- COM R2.1 Type 6 Compact Module
- COM Express Compact 95 x 95 mm (3.74" x 3.74")

1.3.2 Feature List

A-B	System I/O	Rev.2.1 Type 6	SOM-6869 R2.1 Type 6
	PCI Express lanes 0 - 5	1 / 6	5 x1
	LVDS channel A	0 / 1	1
	LVDS channel B	0 / 1	1
	eDP on LVDS CH A pins	0 / 1	1
	VGA port	0 / 1	1
	TV-Out	N/A	N/A
	Digital display interface 0	N/A	N/A
	Serial ports 1 - 2 **	0 / 2	2
	CAN interfaces on SER1	0 / 1	Option w/ serial port
	SATA / SAS ports	1 / 4	2
	AC'97 / HDA digital interface	0 / 1	1
	USB 2.0 ports (host)	4 / 8	8
	USB client (USB2.0)	0 / 1	Option w/ USB2.0 port
	USB 3.0 ports (host)	N/A	N/A
	LAN port 0	1 / 1	1
	Express Card support	1 / 2	2
	LPC Bus	1 / 1	1
	SPI	1 / 2	2
A-B	System Management	Rev.2.1 Type 6	SOM-6869 R2.1 type 6
	SDIO (Muxed on GPIO)	0 / 1	Optional w/ GPIO
	General purpose I/O	8 / 8	8
	SMBus	1 / 1	1
	I2C	1 / 1	1
	Watchdog timer	0 / 1	1
	Speaker out	1 / 1	1
	External BIOS ROM support	0 / 2	2
	Reset function	1 / 1	1
A-B	Power Management	Rev.2.1 Type 6	SOM-6869 R2.1 type 6
	Thermal protection	0 / 1	1
	Battery low alarm	0 / 1	1
	Suspend / wake signals	0 / 3	3
	Power button support	1 / 1	1
	Power good	1 / 1	1
	VCC_5V_SBY contacts	4 / 4	4
	Sleep	0 / 1	1
	Lid input	0 / 1	1
	Fan PWM / tachometer **	0 / 2	2
	Trusted platform modules	0 / 1	1

A-B	Power	Rev.2.1 Type 6	SOM-6869 R2.1 Type 6
	VCC_12V contacts	12 / 12	12
C-D	System I/O	Rev.2.1 Type 6	SOM-6869 R2.1 Type 6
	PCI Express lanes 16 - 31	0 / 16	0
	PCI Express graphics (PEG)	0 / 1	0
	Muxed SDVO channels 1 - 2	N/A	N/A
	PCI Express lanes 6 - 15	0 / 2	0
	PCI bus - 32-bit	N/A	N/A
	PATA port	N/A	N/A
	LAN port 1 - 2	N/A	N/A
	Digital display interfaces 1 - 3	0 / 3	1 (up to 2 while no VGA)
	USB 3.0 ports	0 / 4	2
C-D	Power	Rev.2.1 Type 6	SOM-6869 R2.1 Type 6
	VCC_12V contacts	12 / 12	12

1.3.3 Processor System

CPU	Std. Freq.	Burst Freq.	Core/Thread	LLC Cache	TDP(W)
Atom X7-E3950	1.6 GHz	2 GHz	4/4	2MB	12W
Atom X5-E3940	1.6 GHz	1.8 GHz	4/4	2MB	9.5W
Atom X5-E3930	1.3 GHz	1.8 GHz	2/2	2MB	6.5W
Pentium N4200	1.1 GHz	2.5 GHz	4/4	2MB	6W
Celeron N3350	1.1 GHz	2.4 GHz	2/2	2MB	6W

1.3.4 Memory

2 x dual channels sockets support DDR3L-1866 up to 8GB (ECC not supported)

1.3.5 Graphics

Intel Gen9-LP graphics supports up to 18 execution units.

CPU	Graphics Controller	Base Freq.	Max. Burst Freq.	GFx EUs
Atom X7-E3950	Intel HD Graphics 505	500 MHz	650 MHz	18
Atom X5-E3940	Intel HD Graphics 500	400 MHz	600 MHz	12
Atom X5-E3930	Intel HD Graphics 500	400 MHz	550 MHz	12
Pentium N4200	Intel HD Graphics 505	200 MHz	750 MHz	18
Celeron N3350	Intel HD Graphics 500	200 MHz	650 MHz	12

- **3D API support**
DirectX (9.3, 10, 11.1, 12), OpenGL* 4.3, OGL ES 3.0
- **Other API support**
OpenCL 1.2
- **Media Hardware Decoder**
HEVC (H.265) @L5, H.264 @5.2, MVC, MPEG2, VP8, VP9, VC-1, WMV9, JPEG/MJPEG
- **Media Hardware Encoder**
HEVC (H.265) @L4, H.264@ 5.2, MVC, VP8, VP9, JPEG/MJPEG
- **Media Content Protection**
PAVP, HDCP 2.2, WiDi, PlayReady 3 DRM

1.3.6 Display Interface

- Supports dual channel 18/24-bit LVDS which can optionally be eDP.
- Configurable DisplayPort (DP), HDMI on DDI1.
- Configurable VGA, DisplayPort (DP), HDMI on DDI2.

	LVDS	eDP	VGA	DP	HDMI/DVI
# of Ports	1 port shared with eDP	1 port	1 port shared with DDI2	1 port shared with DDI1	1 port shared with DDI1
Standard	-	eDP1.3	DP1.2	DP1.2	HDMI1.4b
Max. Resolution	1920x1200 @ 60Hz Option support for eDP1.3	Up to 4096 x 2160 @ 60Hz, with SSC	Up to 1920x1200 @ 60Hz	Up to 4096x2160 @ 60 Hz	Up to 3840x2160 @ 30 Hz
Data Rate	112 Mega Pixels per Channel	5.4 Gb/s	2.7 Gb/s	5.4 Gb/s	2.9 Gb/s
HDCP	N/A	N/A	1.4	1.4	1.4
HD Audio	N/A	N/A	Yes	Yes	Yes

1.3.7 Multiple-Display

		Single Display	Dual Display					Triple Display			
		LVDS, eDP, VGA, DP/ HDMI	LVDS +DDI1 (DP/ HDMI)	LVDS +VGA	eDP+ DDI1 (DP/ HDMI)	eDP+VGA	VGA + DDI1 (DP/ HDMI)	eDP+VGA +DDI1 (DP/HDMI)	LVDS+ VGA+DDI1 (DP/HDMI)	eDP+DD I1 (DP/ HDMI) +DDI2 (DP/ HDMI)	LVDS+D DDI1(DP/ HDMI) +DDI2(D P/HDMI)
LVDS	LVDS	1920x 1200	1920x 1200	1920x 1200	-	-	-	-	1920x1200	-	1920x 1200
	eDP1	Up to 4096 x 2160 @ 60Hz	-	-	Up to 4096 x 2160 @ 60Hz	Up to 4096 x 2160 @ 60Hz	-	Up to 4096 x 2160 @ 60Hz	-	Up to 4096 x 2160 @ 60Hz	-
DDI1	DP	4096 x 2160 @ 60Hz	4096 x 2160 @ 60Hz	-	4096 x 2160 @ 60Hz	-	4096 x 2160 @ 60Hz	4096 x 2160 @ 60Hz	4096 x 2160 @ 60Hz	4096 x 2160 @ 60Hz	4096 x 2160 @ 60Hz
	HDMI	Up to 3840x 2160 @ 30 Hz	Up to 3840x 2160 @ 30 Hz	-	Up to 3840x 2160 @ 30 Hz	-	Up to 3840x 2160 @ 30 Hz	Up to 3840x 2160 @ 30 Hz	Up to 3840x2160 @ 30 Hz	Up to 3840x 2160 @ 30 Hz	Up to 3840x 2160 @ 30 Hz
DDI2	VGA	1920 x 1080 @ 60 Hz	-	1920 x 1080 @ 60 Hz	-	1920 x 1080 @ 60 Hz	1920 x 1080 @ 60 Hz	1920 x 1080 @ 60 Hz	1920 x 1080 @ 60 Hz	-	-
	DP	up to 4096 x 2160 @ 60Hz	-	-	-	-	-	-	-	up to 4096 x 2160 @ 60Hz	up to 4096 x 2160 @ 60Hz
	HDMI	up to 3840x 2160 @ 30 Hz	-	-	-	-	-	-	-	Up to 3840x 2160 @ 30 Hz	Up to 3840x 2160 @ 30 Hz

1.3.8 Expansion Interface

■ PCIe x1

Intel natively integrates 5 x PCI Express x1 lanes and up to 5 devices.

	PCIe P0	PCIe P1	PCIe P2	PCIe P3	PCIe P4	GbE
Default	x1	x1	x1	x1	x1	Yes
Option	x4				x1	Yes
Option	x2		x2		x1	Yes
Option	x2		x1	x1	x1	Yes

■ HD Audio Interface

Supports Intel HD Audio interface integrated in Intel SoC.

■ LPC

Supports Low Pin Count (LPC) 1.1 specification, without DMA or bus mastering. Allows connection to Super I/O, embedded controller, or TPM. LPC clock is 25MHz.

1.3.9 Serial Bus

■ SMBus

Supports SMBus 2.0 specification with alert pin.

■ I2C Bus

Supports I2C bus 8-bit and 10-bit address modes, at both 100KHz and 400KHz.

1.3.10 I/O

■ Gigabit Ethernet

On-module Intel i210IT/i210AT supports IEEE802.3 for 1000BASE-T, 100BASE-TX, and 10BASE-T (802.3, 802.3u, and 802.3ab). Supports IPv4, IPv6, TCP/UDP, SCTP, ARP, Neighbor Discovery, EUI-64.

■ SATA

Supports 2 ports SATA Gen3 (6.0 Gb/s), backward compliant to SATA Gen2 (3.0 Gb/s) and Gen1 (1.5 Gb/s). Maximum data rate is 600 MB/s. Supports AHCI 1.3.1 mode (IDE mode not supported).

■ USB 3.0/USB 2.0

2 ports USB3.0 (5.0 Gbps) and 8 ports USB2.0 (480 Mbps) which are backward compatible to USB1.x. For USB3.0, supports LPM (U0, U1, U2, and U3) manageability to saving power.

■ USB 3.0

	P0	P1
SoC	P0	P1
Schematics	USB_0_1_OC	
SoC USB_OC#	USB_OC0_N	

■ USB 2.0

	P0	P1	P2	P3	P4	P5	P6	P7
SoC	P0	P1	P2	P3	P4	P5	P6	P7
Schematics	USB_0_1_OC		USB_2_3_OC		USB_4_5_OC		USB_6_7_OC	
SoC USB_OC#	USB_OC0_N		USB_OC0_N		USB_OC1_N		USB_OC1_N	

- **SPI Bus**
Supports BIOS flash only. SPI clock can be 50MHz, 33MHz, or 20MHz, capacity up to 16MB.
- **Watchdog**
Supports multi-level watchdog time-out output. Provides 1-65535 level, from 100ms to 109.22 minutes intervals.
- **Serial port**
2 port 2-wire serial ports (Tx/Rx), supports 16550 UART compliance.
 - Programmable FIFO or character mode
 - 16-byte FIFO buffer on transmitter and receiver in FIFO mode
 - Programmable serial-interface characteristics: 5, 6, 7, or 8-bit character
 - Even, odd, or no parity bit selectable
 - 1, 1.5, or 2 stop bit selectable
 - Baud rate up to 115.2K
- **BIOS**
BIOS chip is on module by default. Also allows users to place BIOS chip on carrier board with appropriate design and a pull-down to GND on BIOS_DISABLE# pin.

Note! *If system COM is cleared, we strongly suggest to go BIOS setup menu and load default setting at first time boot up.*



1.3.11 Power Management

- **Power Supply**
Supports both ATX and AT power modes. VSB is for suspend power and can be optional if standby (suspend-to-RAM) support is not required. RTC Battery may be optional if keeping time/date is not required.
 - VCC: 5V +/- 5%
 - VSB: 5V +/- 5% (Suspend power)
 - RTC Battery Power: 2.0V – 3.3V
- **PWROK**
Power OK from main power supply. A high value indicates that the power is good. This signal can be used to hold off module startup to allow carrier based FPGAs or other configurable devices time to be programmed.
- **Power Sequence**
According to PICMG COM Express COM.0 R 2.1 specification
- **Wake Event**
Various wake-up events for different scenarios.
 - Wake-on-LAN(WOL): Wake to S0 from S3/S4/S5
 - USB Wake: Wake to S0 from S3
 - PCIe Device Wake: depends on user inquiry and may need customized BIOS
 - LPC Wake: depends on user inquiry and may need customized BIOS
- **Advantech S ECO Mode (Deep Sleep Mode)**
Advantech iManager provides additional features to allow the system to enter a very low suspend power mode – S5 ECO mode. In this mode, the module will cut all power including suspend and active power into the chipset and keep an on-module controller active. Therefore, only under 50mW power will be consumed which means the user's battery pack can last longer. While this mode is enabled in BIOS, the system (or module) only allows a power button to boot rather than others such as WOL.

1.3.12 Environment

- **Temperature**
Operating: 0 ~ 60° C (32 ~ 140° F), with a fanless heatsink under 0.7m/s air flow.
Storage: -40 ~ 85° C (-40 ~ 185° F)
- **Humidity**
Operating: 40° C @ 95% relative humidity, non-condensing
Storage: 60° C @ 95% relative humidity, non-condensing
- **Vibrations**
IEC60068-2-64: Random vibration test under 3.5Grms.
- **Drop Test (Shock)**
Federal Standard 101 method 5007 test procedure with standard packing.
- **EMC**
CE EN55022 Class B and FCC Certifications: validated with standard development boards in Advantech's chassis.

1.3.13 MTBF

Please refer Advantech SOM-6869 Series Reliability Prediction Report No: TBC.

1.4 Advantech Embedded Software Services

The mission of Advantech Embedded Software Services is to "Enhance quality of life with Advantech platforms and Microsoft Windows embedded technology." We enable Windows Embedded software products on Advantech platforms to more effectively support the embedded computing community. Customers are freed from the hassle of dealing with multiple vendors (hardware suppliers, system integrators, embedded OS distributors) for projects. Our goal is to make Windows Embedded Software solutions easily and widely available to the embedded computing community.

To install the drivers, please connect to internet and browse the website <http://support.advantech.com.tw> to download the setup file.

1.4.1 Advantech iManager

Supports APIs for GPIO, smart fan control, multi-stage watchdog timer and output, temperature sensor, hardware monitor, etc. It follows PICMG EAPI 1.0 specification and provides backward compatibility.

1.4.2 Advantech WISE-PaaS/RMM

Is an IoT device management platform which is:

Reliable:

Remote monitoring and management for all connected devices with access control, 3rd party integration protection, and a recovery solution for server redundancy for service availability

Scalable:

Supports up to 1000 IoT device connections and 3 layers of server hierarchy and unlimited sub-servers.

Extensible:

Restful API web service, Node-red & WISE agent framework allow users to perform further development, customization, and integration based on their application.

Power Consumption & Performance

For reference performance or benchmark data compared with other modules, please refer to "Advantech COM Performance & Power Consumption Table".

Selection Guide w/ P/N

Part No.	CPU	Frequency Base/Burst	Core	CPU TDP	DDR3L Memory	LVDS	VGA	DDI	Giga LAN	HD Audio	PCIe x1	USB 2.0	USB 3.0	SATA III	LPC	Power	Thermal Solution	Operating Temperature
SOM-6869RC-S1A1E	Celeron N3350	1.1/2.4 GHz	2C	6W	DDR3L-1866 MHz	18/24-bit	1	2	1	Yes	5	8	2	2	Yes	AT/ATX	Passive	0 ~ 60° C
SOM-6869PC-S2A1E	Pentium N4200	1.1/2.5 GHz	4C	6W	DDR3L-1866 MHz	18/24-bit	1	2	1	Yes	5	8	2	2	Yes	AT/ATX	Passive	0 ~ 60° C
SOM-6869AC-S3A1E	Atom x5-E3930	1.3/1.8 GHz	2C	6.5 W	DDR3L-1866 MHz	18/24-bit	1	2	1	Yes	5	8	2	2	Yes	AT/ATX	Passive	0 ~ 60° C
SOM-6869AC-S6A1E	Atom x5-E3940	1.6/1.8 GHz	4C	9.5 W	DDR3L-1866 MHz	18/24-bit	1	2	1	Yes	5	8	2	2	Yes	AT/ATX	Passive	0 ~ 60° C
SOM-6869AC-S7A1E	Atom x7-E3950	1.6/2.0 GHz	4C	12W	DDR3L-1866 MHz	18/24-bit	1	2	1	Yes	5	8	2	2	Yes	AT/ATX	Passive	0 ~ 60° C
SOM-6869AX-S3A1E	Atom x5-E3930	1.3/1.8 GHz	2C	6.5 W	DDR3L-1866 MHz	18/24-bit	1	2	1	Yes	5	8	2	2	Yes	AT/ATX	TBC	-40 ~ 85° C
SOM-6869AX-S6A1E	Atom x5-E3940	1.6/1.8 GHz	4C	9.5 W	DDR3L-1866 MHz	18/24-bit	1	2	1	Yes	5	8	2	2	Yes	AT/ATX	TBC	-40 ~ 85° C
SOM-6869AX-S7A1E	Atom x7-E3950	1.6/2.0 GHz	4C	12W	DDR3L-1866 MHz	18/24-bit	1	2	1	Yes	5	8	2	2	Yes	AT/ATX	TBC	-40 ~ 85° C

Packing list

Part No.	Description	Quantity
-	SOM-6869 CPU Module (N4200, N3350 CPU SKU)	1
1960080793T000	Heatspreader * For N4200, N3350 CPU SKU	1

Part No.	Description	Quantity
-	SOM-6869 CPU Module (E3950, E3940, E3930 CPU SKU)	1
1960080792T000	Heatspreader * For E3950, E3940, E3930 CPU SKU	1

Development Board

Part No.	Description
SOM-DB5800-00A2E	COMe Devel. Board Type6 pint-out Rev. A2

Accessory

Part No.	Description
1960048815N001	Semi-Heatsink 95 x 95 x 16.25 mm
1960048819N001	Semi-Cooler 95 x 95 x 33 mm
96LEDK-I057VG50NA1	5.7" LED PANEL 500N 640X480(G)
96LEDK-A084SV45NB2	8.4" LED PANEL 450N 800X600(G) G084SN05 V9
96LEDK-C150XG40NG1	15" LED PANEL 400N 1024X768(G) G150XGE-L04
96LEDK-A170SX35NF1	17" LED 350N 1280X1024(G) G170EG01 V1

Pin Description

Advantech provides useful checklists for schematic design and layout routing. Our schematic checklists will specify details about each pin electrical properties and how to connect them for different user scenarios. Our layout checklist will specify the layout constrains and recommendations for trace length, impedance, and other necessary information during design.

Please contact your nearest Advantech branch office or call for design documents and further support.

Chapter 2

Mechanical Information

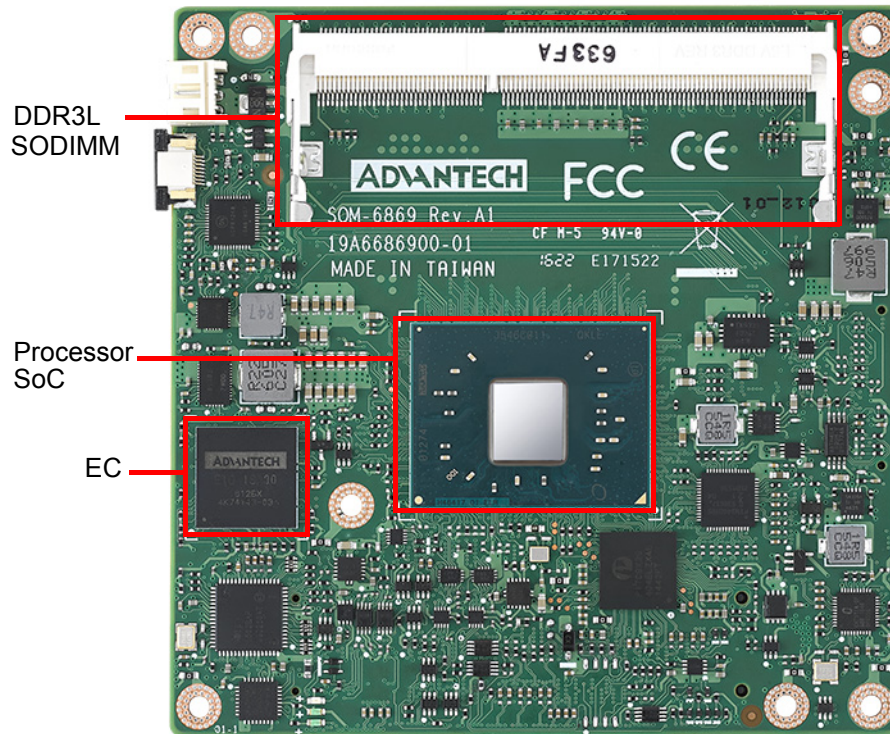
This chapter gives mechanical information on the SOM-6869 COM Express Compact CPU Module.

Sections include:

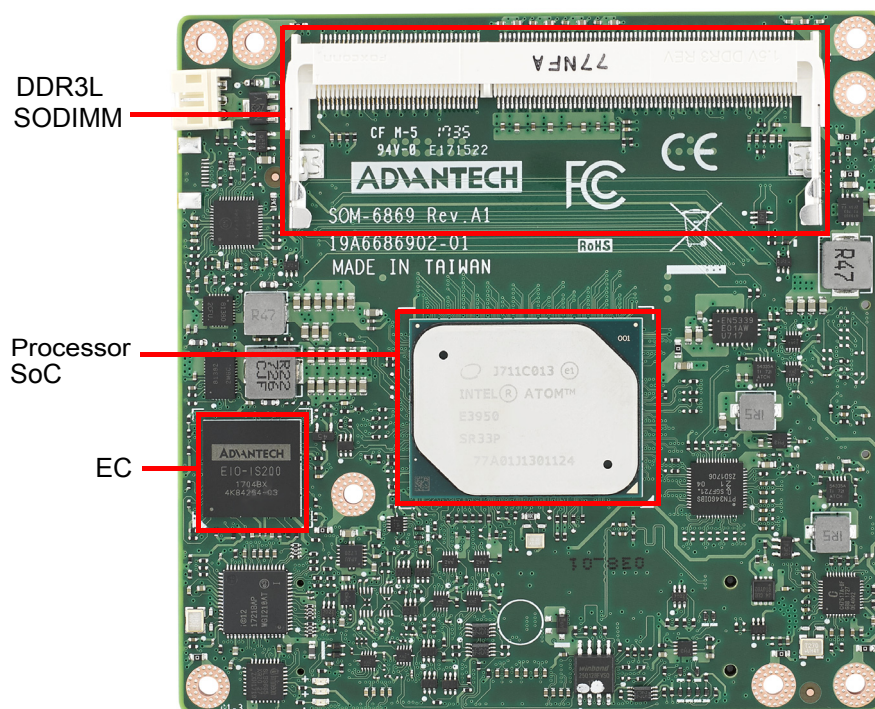
- Board Information
- Mechanical Drawings
- Assembly Drawings

2.1 Board Information

The figures below indicate the main chips on SOM-6869 COM Express Compact CPU Module. Please be aware of these positions when designing the customer's carrier board to avoid mechanical problems and make thermal solutions contacts for the best heat dissipation performance.



Intel® Pentium and Celeron N and J Series
Figure 2.1 Board chips identify – Front



Intel® Atom™ Processor E3900 Series
Figure 2.2 Board chips identify – Front

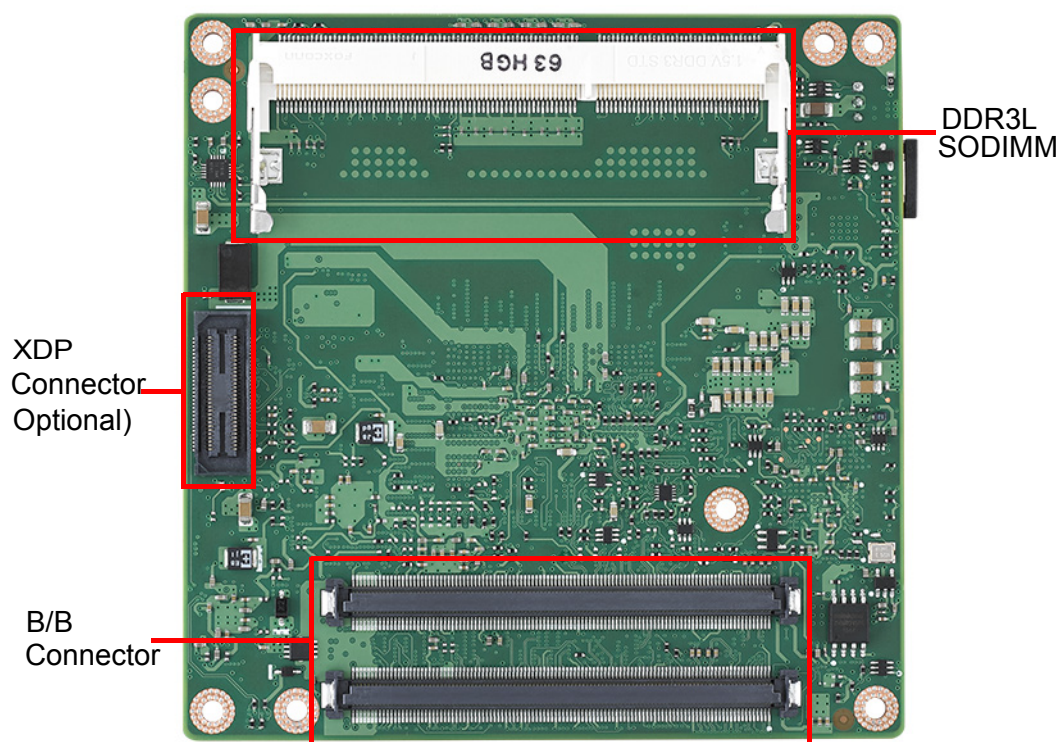
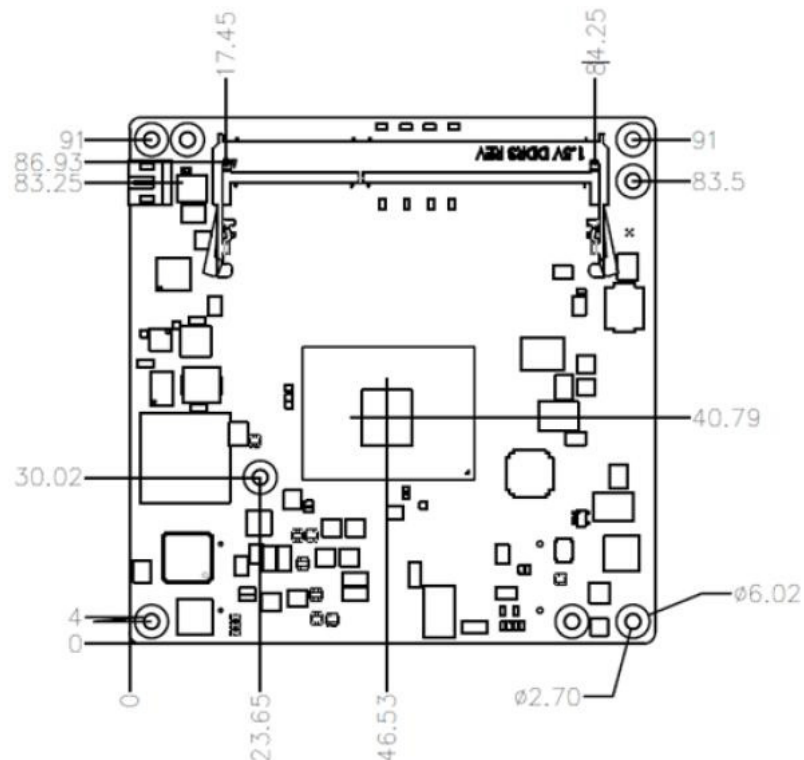


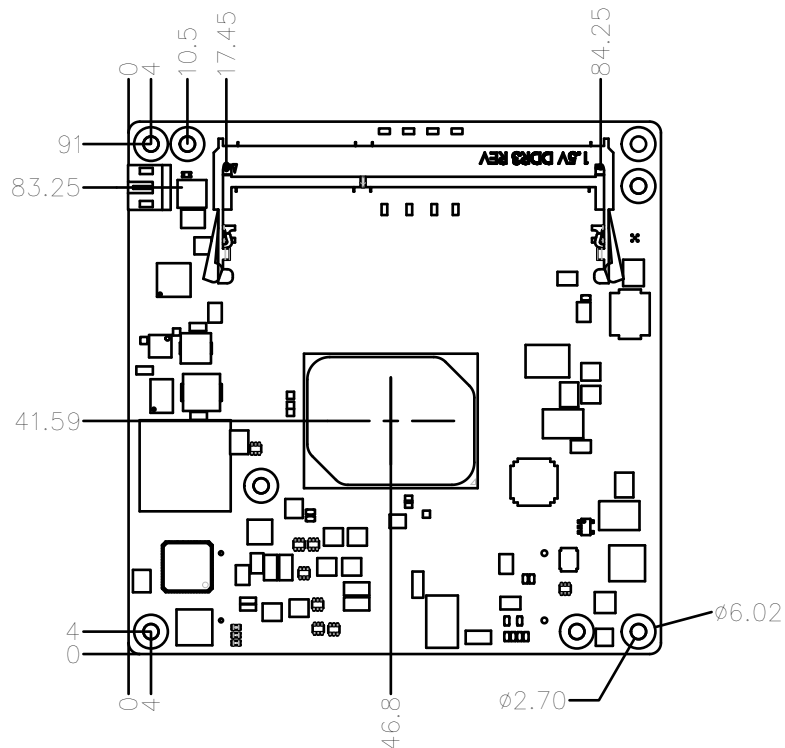
Figure 2.3 Board chips identify – Back

2.2 Mechanical Drawing

For more details about 2D/3D models, please look on Advantech's COM support service website <http://com.advantech.com>



Intel® Pentium and Celeron N and J Series
Figure 2.4 Board Mechanical Drawing – Front



Intel® Atom™ Processor E3900 Series
Figure 2.5 Board Mechanical Drawing - Front

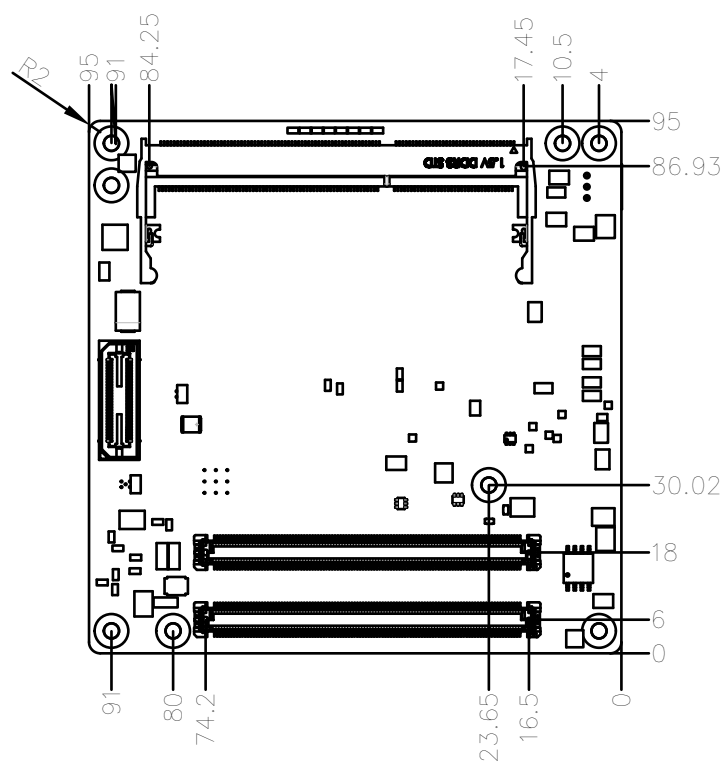


Figure 2.6 Board Mechanical Drawing – Back

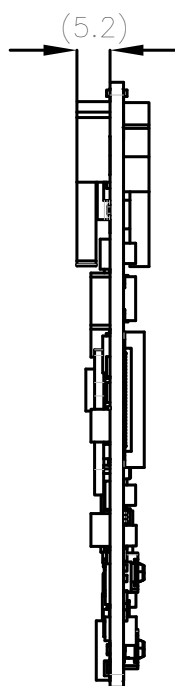


Figure 2.7 Board Mechanical Drawing – Side

2.3 Assembly Drawing

These figures demonstrate the assembly order for the thermal module, and COM Express module to carrier board.

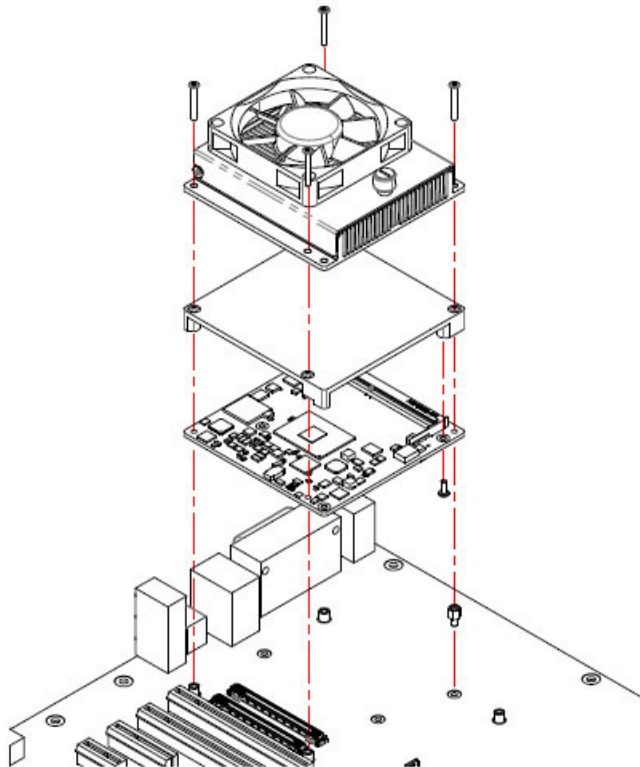
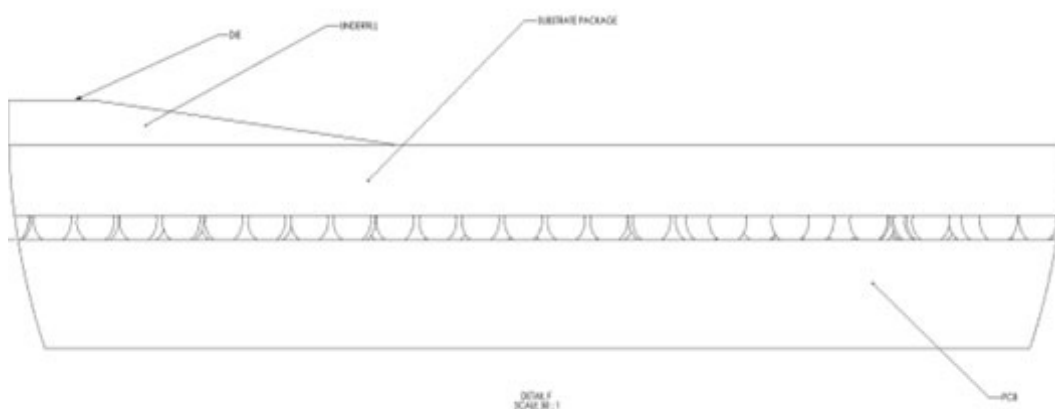


Figure 2.8 Assembly Drawing

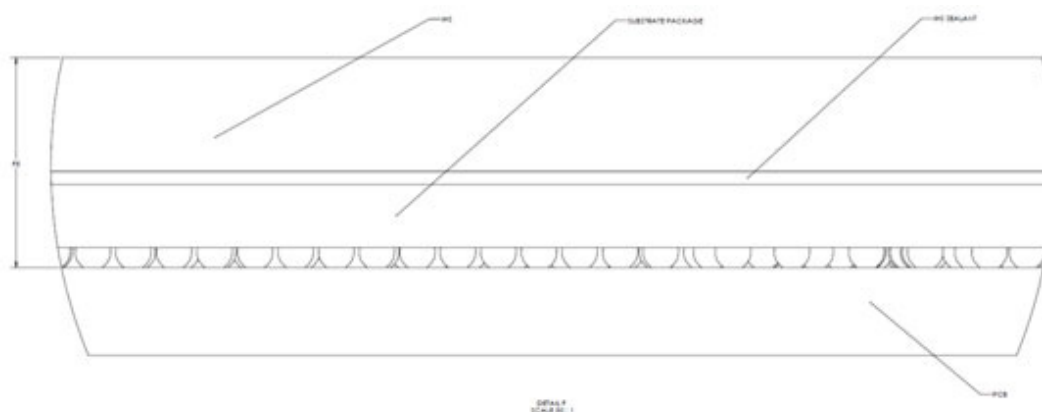
There are four screw holes for SOM-6869 to be pre-assembled with the heat spreader.

2.4 Assembly Drawing

Please consider the CPU and chip height tolerance when designing your thermal solution.



Intel® Pentium and Celeron N and J Series
Figure 2.9 Main Chip Height and Tolerance



Intel® Atom™ Processor E3900 Series
Figure 2.10 Main Chip Height and Tolerance

Chapter 3

AMI BIOS

This chapter gives BIOS setup information for the SOM-6869 COM Express Compact CPU Module.

Sections include:

- Introduction
- Entering Setup
- Hot/Operation Keys
- Exit BIOS Setup Utility

3.1 Introduction

With the AMI BIOS Setup Utility, users can modify BIOS settings and control various system features. This chapter describes the basic navigation of the BIOS Setup Utility.



Figure 3.1 Setup program initial screen

AMI's BIOS ROM has a built-in Setup program that allows users to modify the basic system configuration. This information is stored in flash ROM so it retains the Setup information when the power is turned off.

3.2 Entering Setup

Turn on the computer and then press or <ESC> to enter Setup menu.

3.2.1 Main Setup

When users first enter the BIOS Setup Utility, users will enter the Main setup screen. Users can always return to the Main setup screen by selecting the Main tab. There are two Main Setup options. They are described in this section. The Main BIOS Setup screen is shown below.

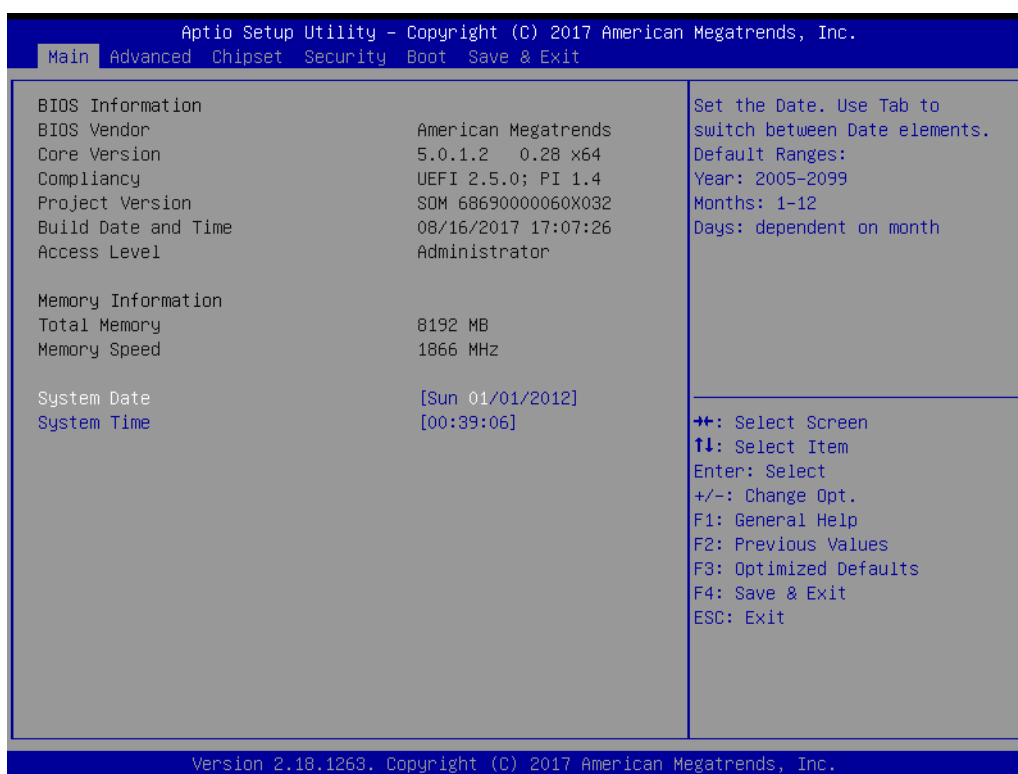


Figure 3.2 Main setup screen

The Main BIOS setup screen has two main frames. The left frame displays all the options that can be configured. Grayed-out options cannot be configured; options in blue can. The right frame displays the key legend.

Above the key legend is an area reserved for a text message. When an option is selected in the left frame, it is highlighted in white. Often a text message will accompany it.

■ System time / System date

Use this option to change the system time and date. Highlight System Time or System Date using the <Arrow> keys. Enter new values through the keyboard. Press the <Tab> key or the <Arrow> keys to move between fields. The date must be entered in MM/DD/YY format. The time must be entered in HH:MM:SS format.

3.2.2 Advanced BIOS Features Setup

Select the Advanced tab from the SOM-6869 setup screen to enter the Advanced BIOS Setup screen. Users can select any item in the left frame of the screen, such as CPU Configuration, to go to the sub menu for that item. Users can display an Advanced BIOS Setup option by highlighting it using the <Arrow> keys. All Advanced BIOS Setup options are described in this section. The Advanced BIOS Setup screens are shown below. The sub menus are described on the following pages.

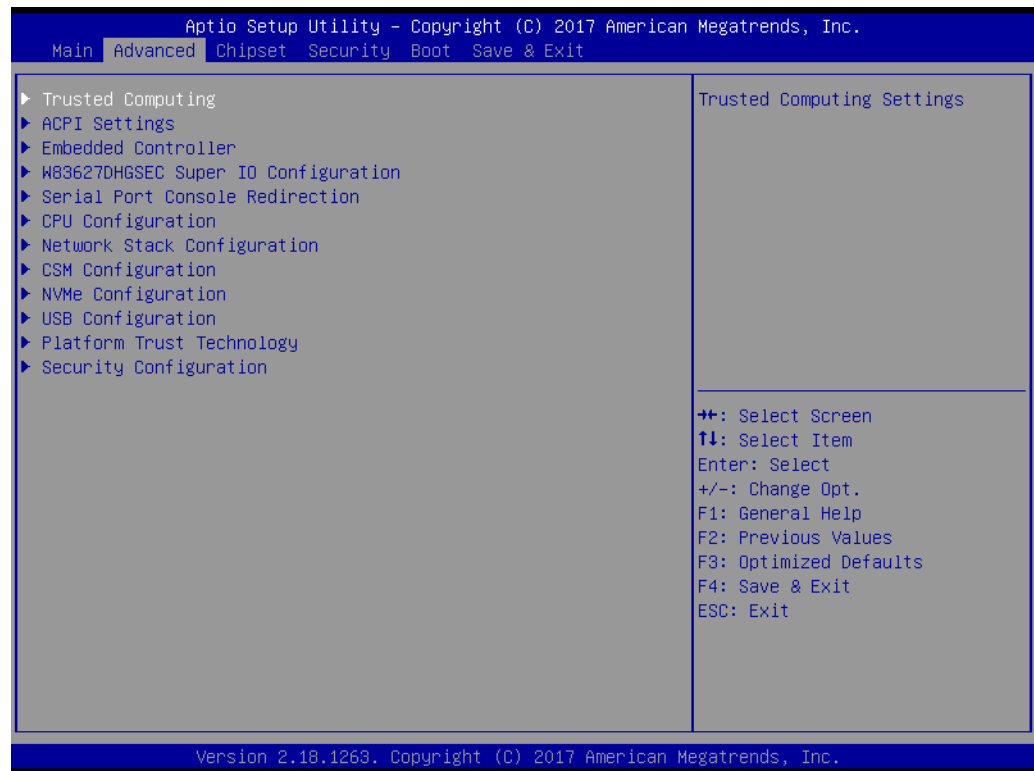


Figure 3.3 Advanced BIOS features setup screen

3.2.2.1 Trusted Computing



Figure 3.4 ACPI Settings

- **Security Device Support**
Enables or Disables BIOS support for security devices. OS will not show Security Devices. TCG EFI protocol and INT1A interface will not be available.

3.2.2.2 ACPI Settings

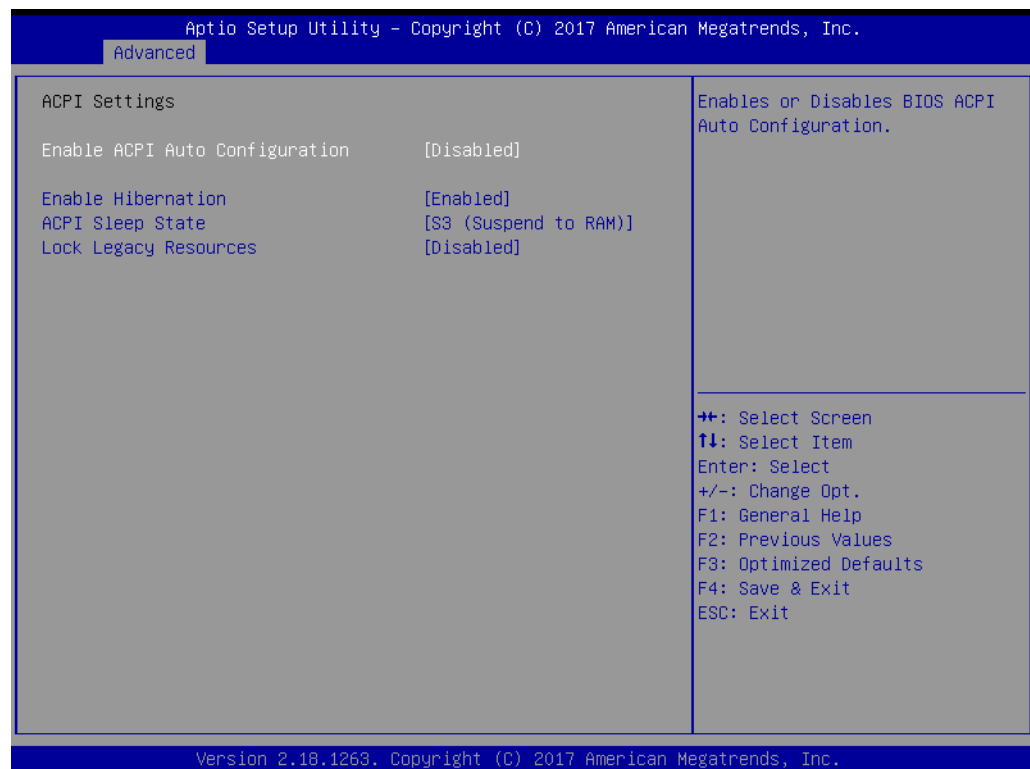


Figure 3.5 ACPI Settings

- **Enable ACPI Auto Configuration**
Enable/Disable BIOS ACPI Auto Configuration.
- **Enable Hibernation**
Enables or Disables the system ability to hibernate (OS/S4 Sleep State). This option may be not effective with some OS.
- **ACPI Sleep State**
Select the highest ACPI sleep state the system will enter when the SUSPEND button is pressed.
- **Lock Legacy Resources**
Enable or Disable Lock Legacy Resources.

3.2.2.3 Embedded Controller

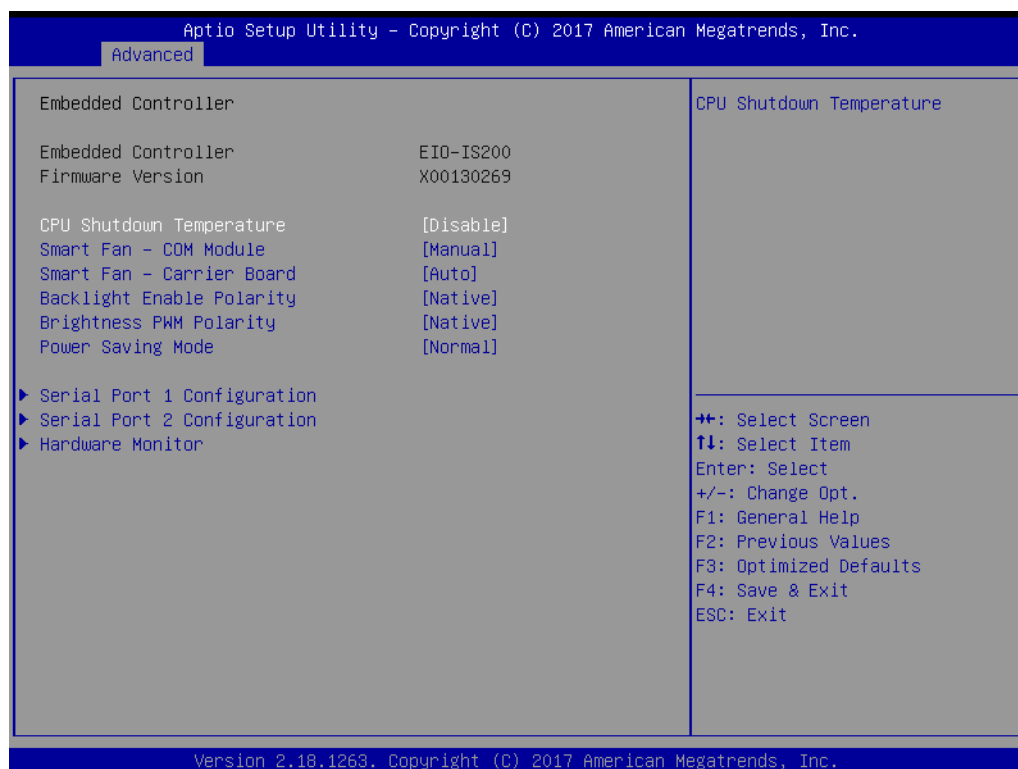


Figure 3.6 Embedded Controller

- **CPU Shutdown Temperature**
Enable/Disable CPU shutdown temperature.
- **Smart Fan – COM Module**
Control COM Module Smart FAN function. Gets value from EC and only sets value when saved changes.
- **Smart Fan – Carrier Board**
Control Carrier Board Smart FAN function. Get value from EC and only sets value when saved changes.
- **Backlight Enable Polarity**
Switch Backlight Enable Polarity for native or invert
- **Brightness PWM Polarity**
Backlight Control Brightness PWM Polarity for native or invert
- **Power Saving Mode**
Select Power Saving Mode
- **Serial Port 1 Configuration**
Set Parameters of Serial Port 1 (COMA).
- **Serial Port 2 Configuration**
Set Parameters of Serial Port 2 (COMB).
- **Hardware Monitor**
Monitor hardware status.

3.2.2.4 Serial Port 1 Configuration

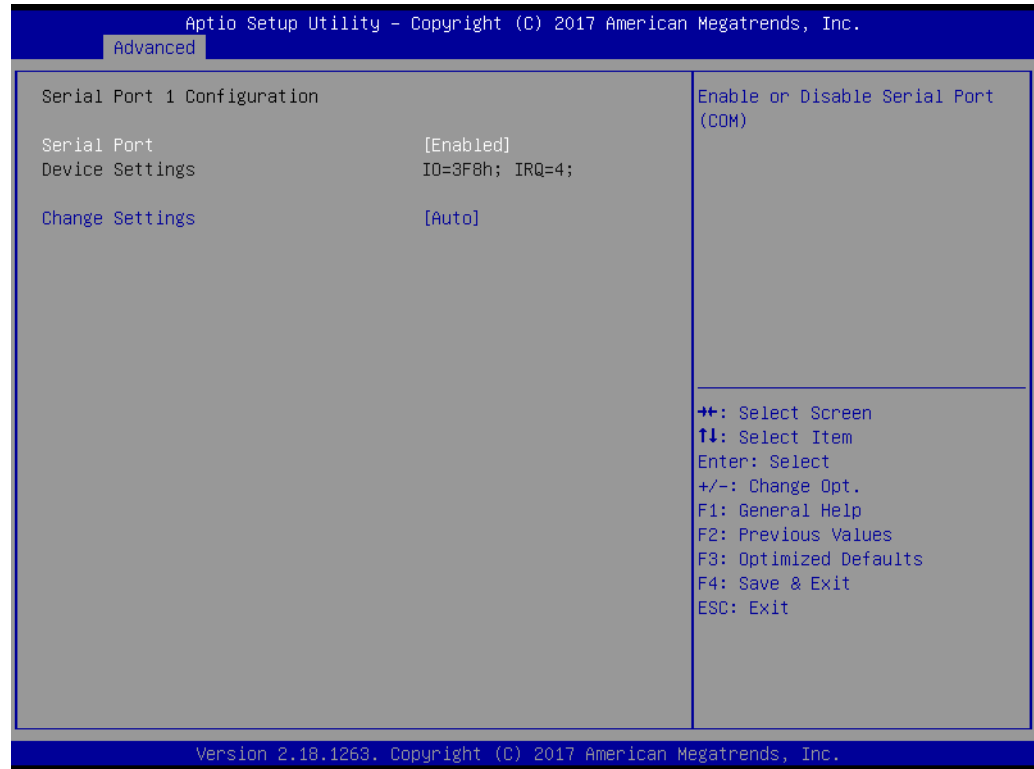


Figure 3.7 Serial Port 1 Configuration

- **Serial Port**
Enable/Disable Serial Port (COM).
- **Change Settings**
Select an optimal setting for Super IO device.

3.2.2.5 Serial Port 2 Configuration

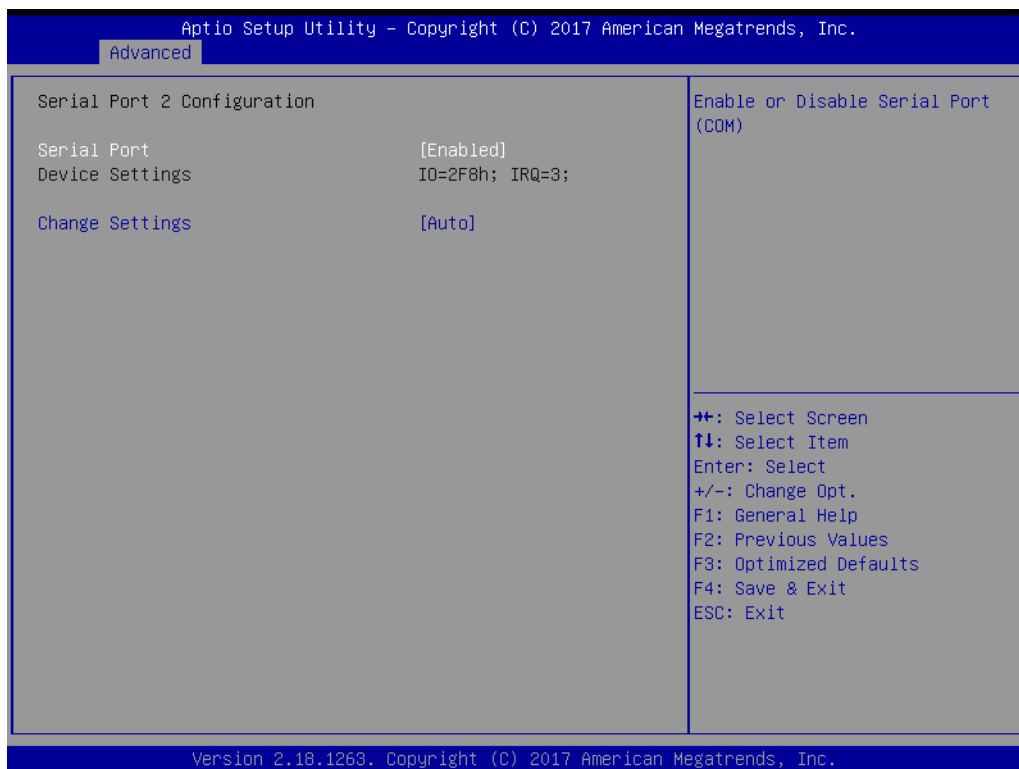


Figure 3.8 Serial Port 2 Configuration

- **Serial Port**
Enable/Disable Serial Port (COM).
- **Change Settings**
Select an optimal setting for Super IO device.

3.2.2.6 Hardware Monitor

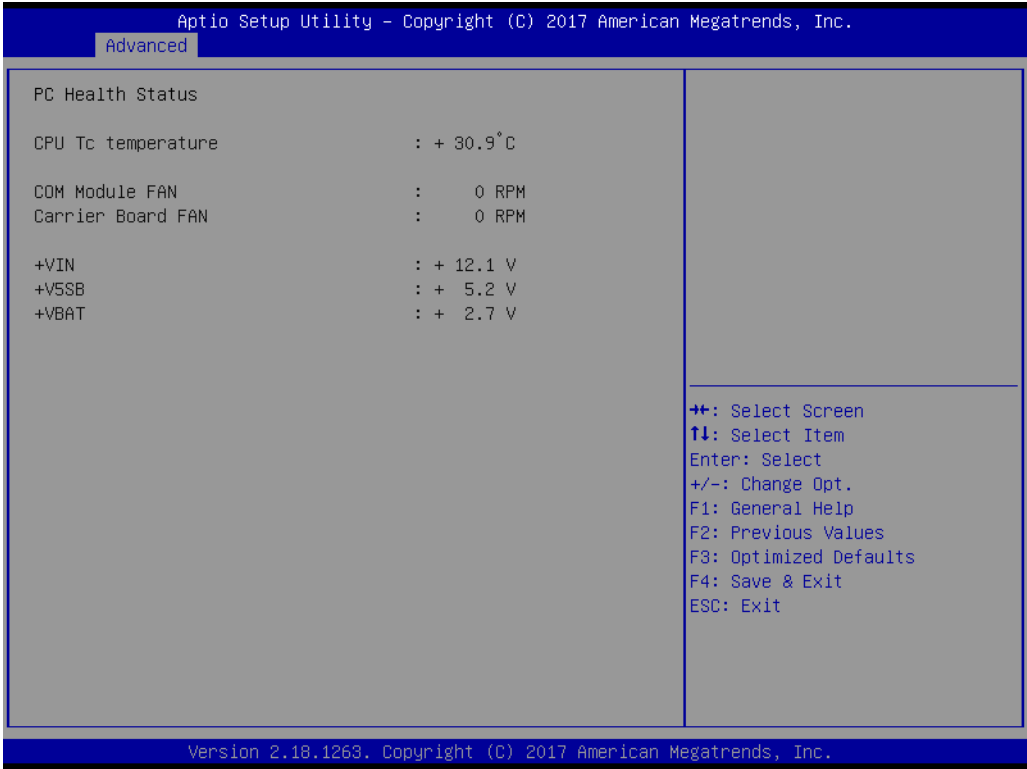


Figure 3.9 Hardware Monitor

- **Hardware Monitor Information**
This item shows Hardware information parameters.

3.2.3 W83627DHGSEC Super IO Configuration

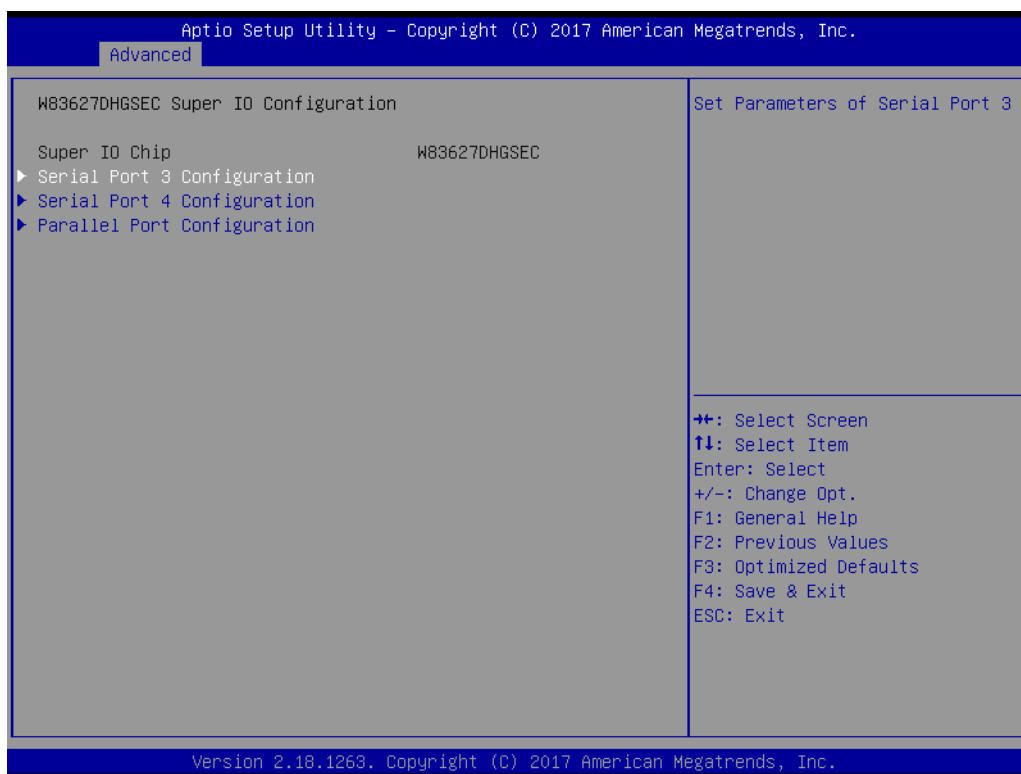


Figure 3.10 W83627DHGSEC Super IO Configuration

- **Serial Port 3 Configuration**
Set parameters of serial port 3.
- **Serial Port 4 Configuration**
Set parameters of serial port 4.
- **Parallel Port Configuration**
Set parameters of parallel port (LPT/LPTE).

Serial Port 3 Configuration



Figure 3.11 Serial Port 3 Configuration

- **Serial Port**
Enable or Disable serial port (COM).
- **Change Settings**
Select an optimal setting for Super IO device.

Serial Port 4 Configuration

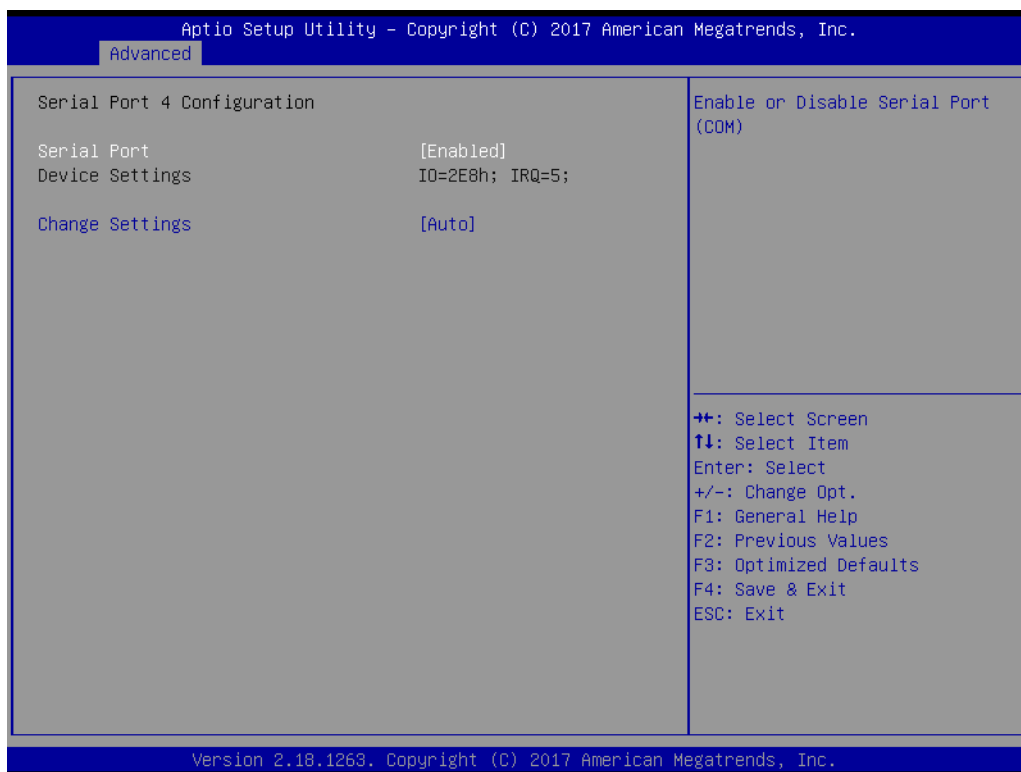


Figure 3.12 Serial Port 4 Configuration

- **Serial Port**
Enable or Disable serial port (COM).
- **Change Settings**
Select an optimal setting for Super IO device.

Parallel Port Configuration

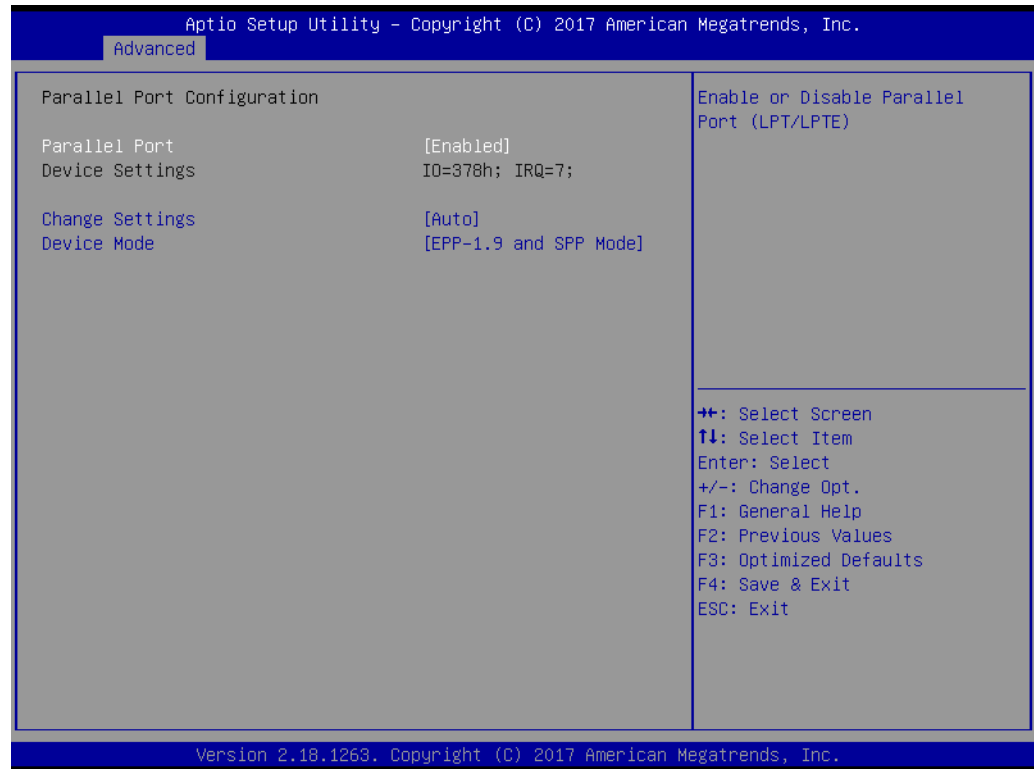


Figure 3.13 Parallel Port Configuration

- **Parallel Port**
Enable or Disable parallel port (LPT/LPTE).
- **Change Settings**
Select an optimal setting for Super IO device.
- **Device Mode**
Change the printer port mode.

3.2.3.1 Serial Port Console Redirection

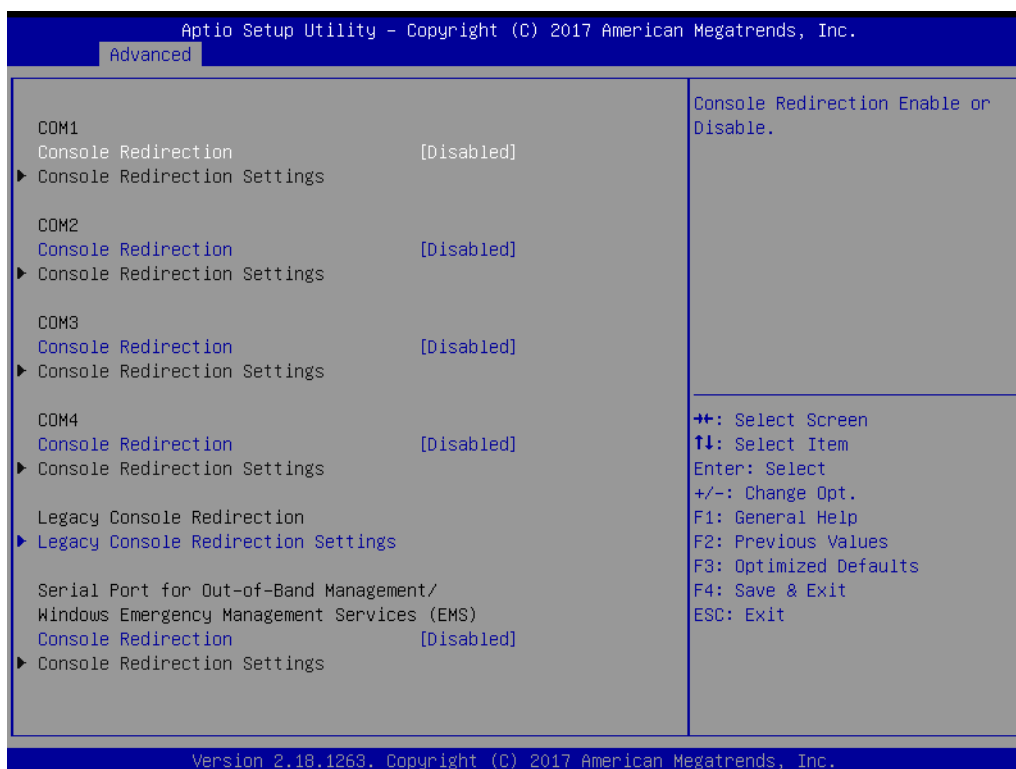


Figure 3.14 Serial Port Console Redirection

- **COM1 Console Redirection**
Console Redirection Enable or Disable.
- **COM2 Console Redirection**
Console Redirection Enable or Disable.
- **COM3 Console Redirection**
Console Redirection Enable or Disable.
- **COM4 Console Redirection**
Console Redirection Enable or Disable.
- **Legacy Console Redirection Settings**
Change Legacy Console Redirection Settings.
- **Console Redirection**
Console Redirection Enable or Disable.

Legacy Console Redirection Settings

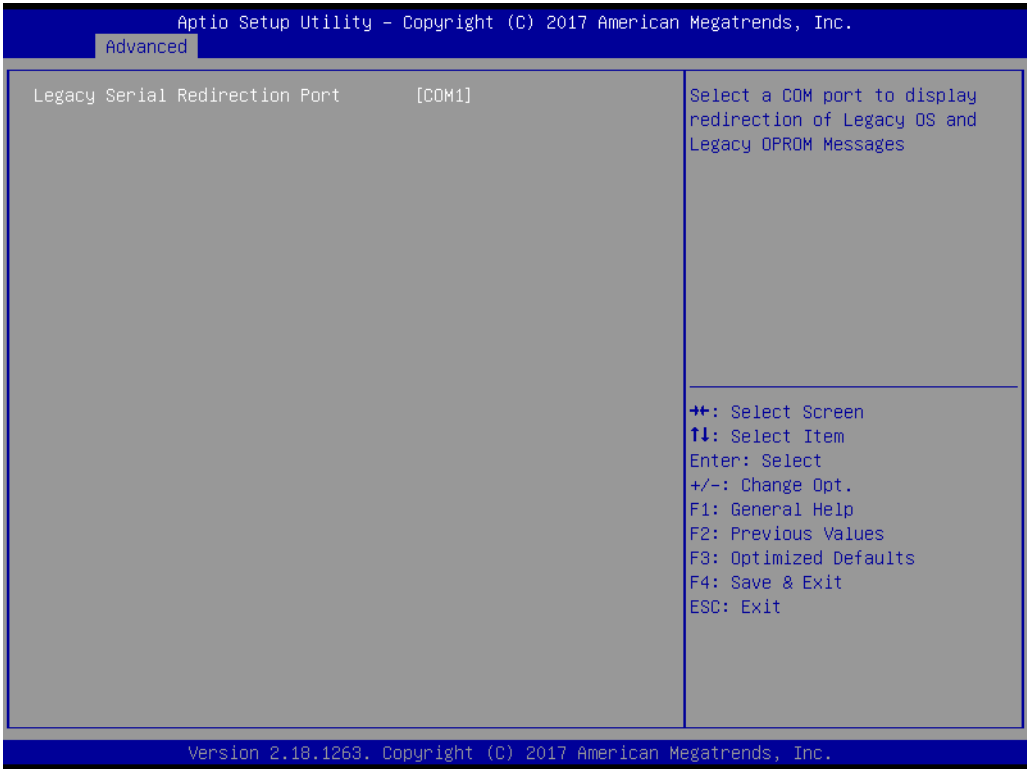


Figure 3.15 Legacy Console Redirection Settings

- **Legacy Console Redirection Settings**
Select a COM port to display redirection of Legacy OS and Legacy OPRM messages.

3.2.3.2 CPU Configuration

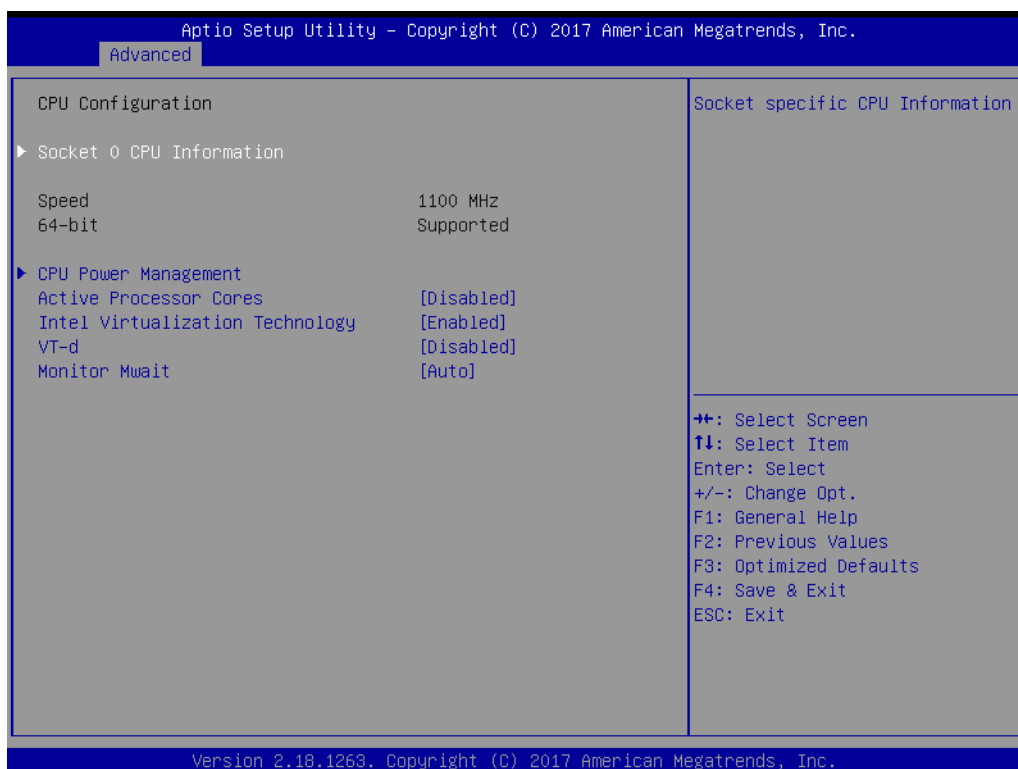


Figure 3.16 CPU Configuration

- **Socket 0 CPU Information**
Socket specific CPU information.
- **CPU Power Management**
CPU Power Management options.
- **Active Processor Cores**
Number of cores to enable in each processor package.
- **Intel Virtualization Technology**
When enabled, a VMM can utilize the additional hardware capabilities provided by Vanderpool Technology.
- **VT-d**
Enable/Disable CPU VT-d.
- **Monitor Mwait**
Enable/Disable Monitor Mwait.

3.2.3.3 Socket 0 CPU Configuration

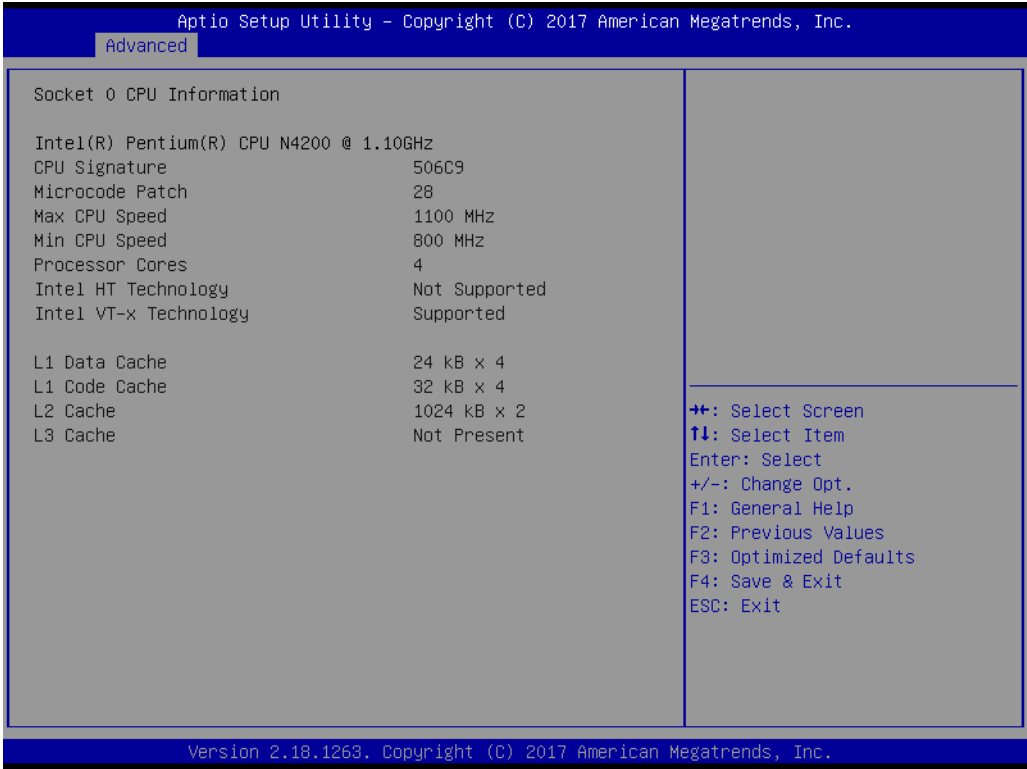


Figure 3.17 Socket 0 CPU Configurations

- **Socket 0 CPU Information**
Socket specific CPU Information.

3.2.3.4 CPU Power Management

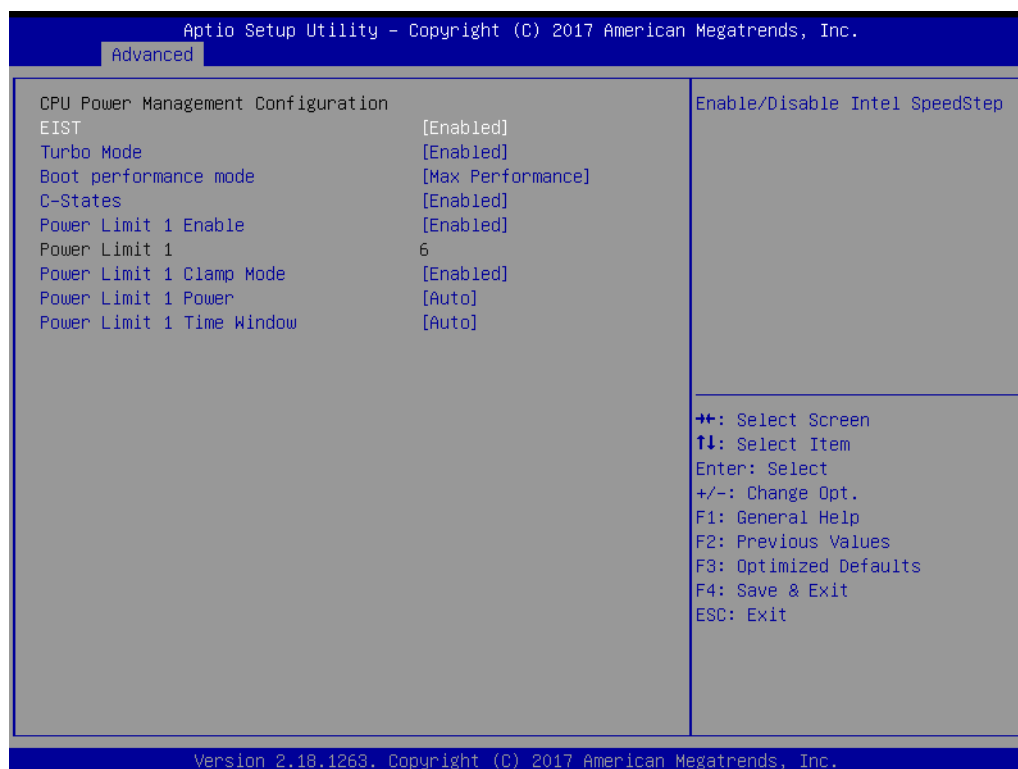


Figure 3.18 Socket 0 CPU Configurations

- **EIST**
Enable/Disable Intel SpeedStep.
- **Turbo Mode**
Enable/Disable Turbo Mode.
- **Boot performance mode**
Select the performance state that the BIOS will set before OS handoff.
- **C-States**
Enable/Disable C states.
- **Power Limit 1 Enable**
Enable/Disable Power Limit 1.
- **Power Limit 1 Clamp Mode**
Enable/Disable Power Limit 1 clamp mode.
- **Power Limit 1 Power**
Power Limit 1 in Watts. Auto will program Power Limit 1 based on the silicon default support value.
- **Power Limit 1 Time Window**
Power Limit 1 time window value in seconds. Auto will program Power Limit 1 time window based on the silicon default support value.

3.2.3.5 Network Stack Configuration

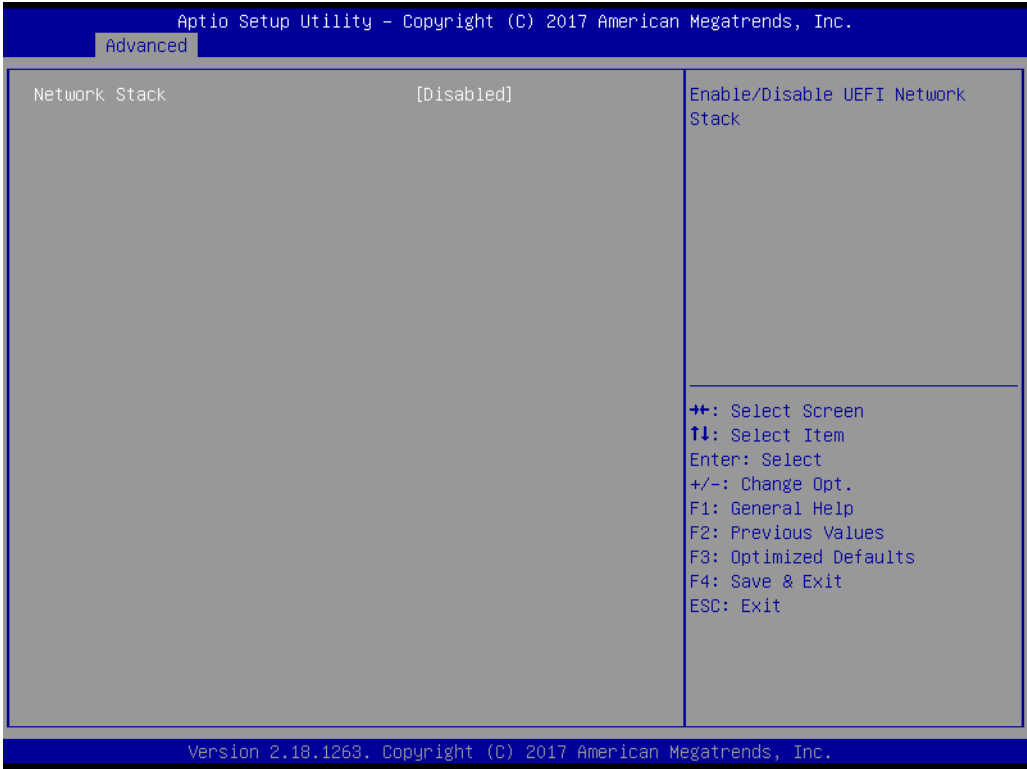


Figure 3.19 Network Stack Configuration

- **Network Stack**
Enable/Disable UEFI Network Stack.

3.2.3.6 CSM Configuration

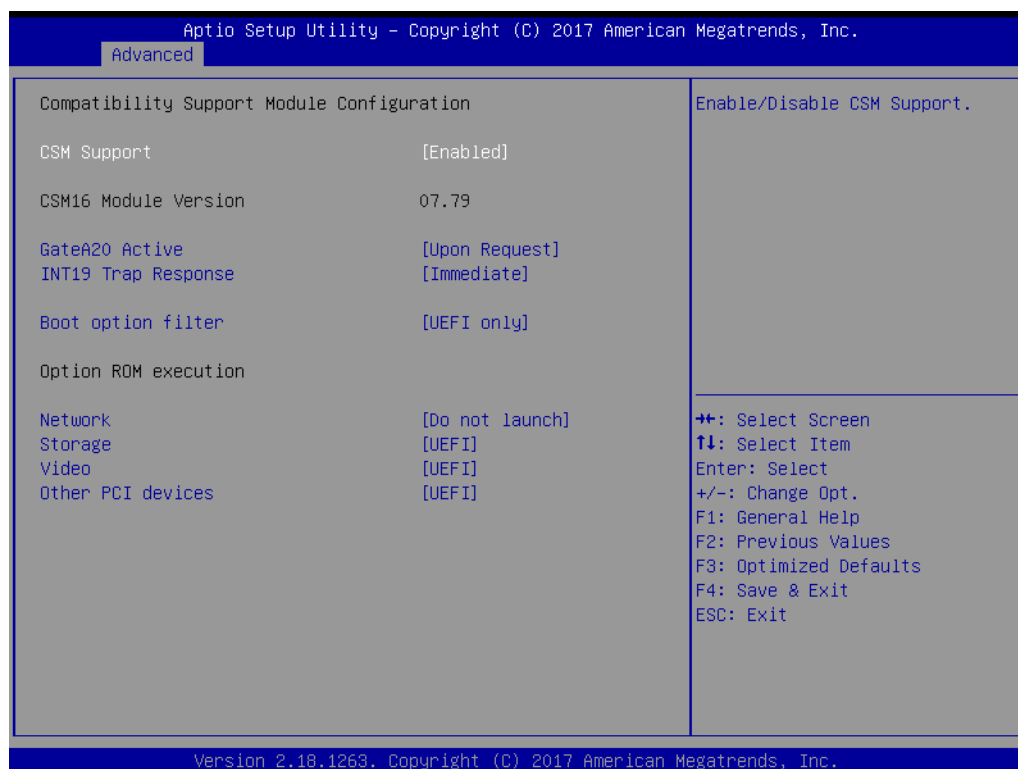


Figure 3.20 CSM Configuration

- **CSM Support**
Enable/Disable CSM support.
- **GateA20 Active**
UPON Request-GA20 can be disabled using BIOS services. Do not allow disabling of GA20; this option is useful when any RT code is executed above 1MB.
- **INT19 Trap Response**
BIOS reaction on INT19 trapping by option ROM:
IMMEDIATE- execute the trap right away;
POSTPONED- execute the trap during legacy boot.
- **Boot option filter**
This option controls Legacy/UEFI ROMs priority.
- **Network**
Controls the execution of UEFI and Legacy PXE OpROM.
- **Storage**
Controls the execution of UEFI and Legacy Storage OpROM.
- **Video**
Controls the execution of UEFI and Legacy Video OpROM.
- **Other PCI devices**
Determines OpROM execution policy for devices other than network, storage, or video.

3.2.3.7 NVMe Configuration

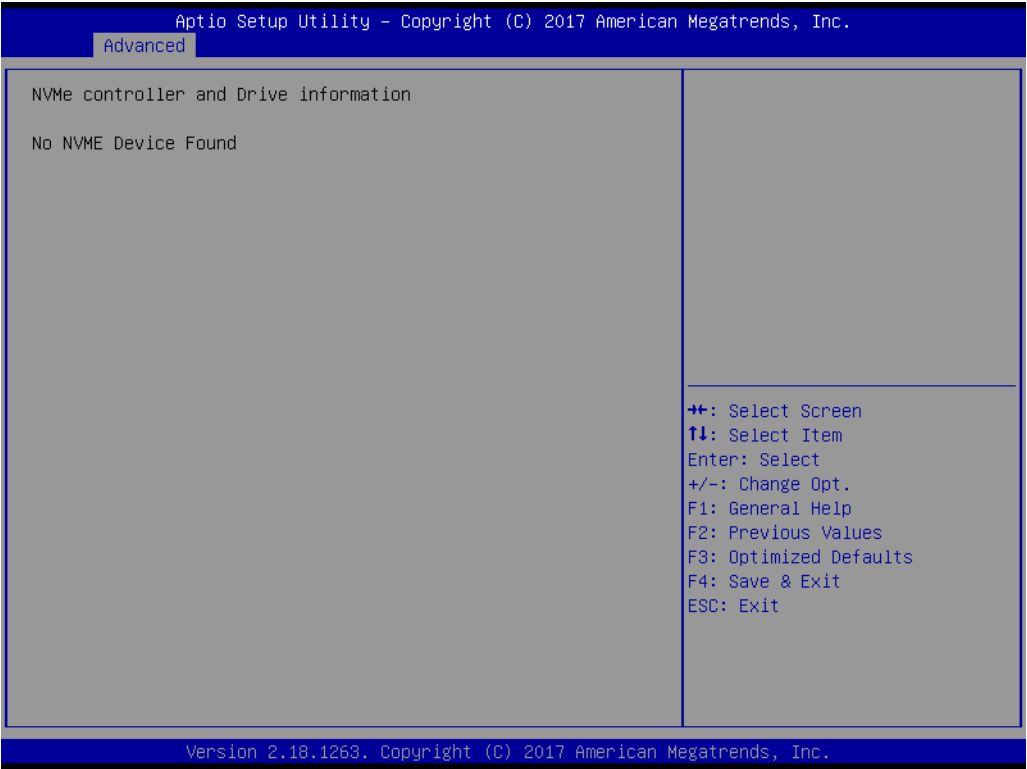


Figure 3.21 NVMe Configuration

- **NVMe Configuration**
NVMe controller and driver information.

3.2.3.8 USB Configuration

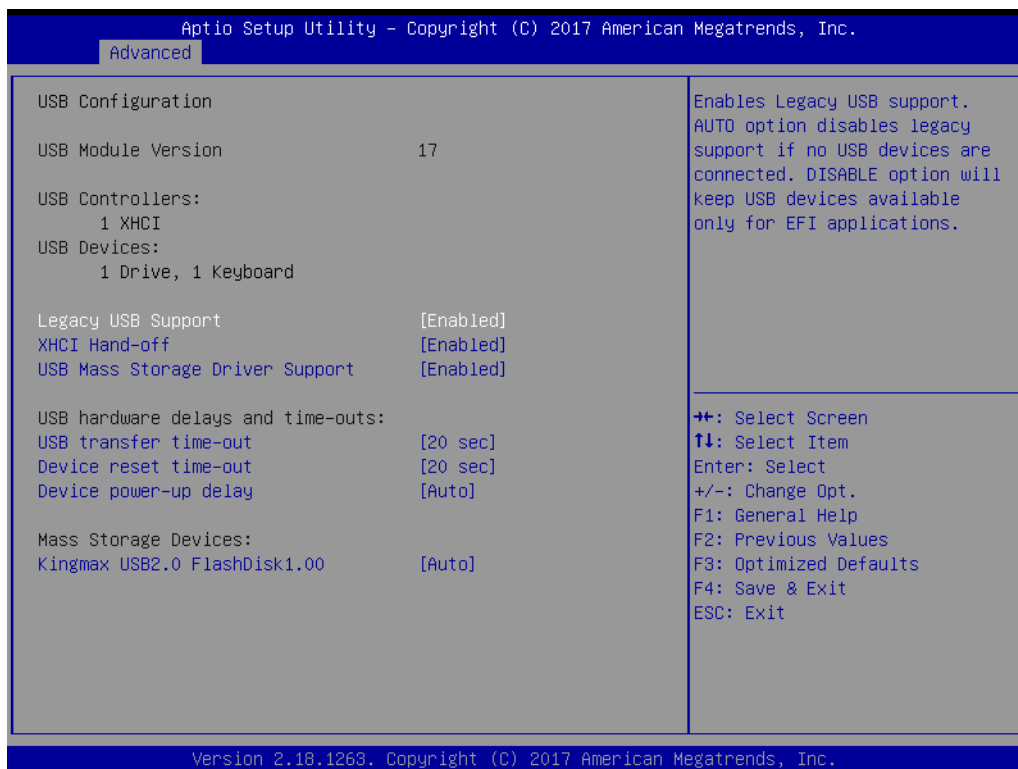


Figure 3.22 USB Configuration

- **Legacy USB Support**
Enables Legacy USB support. Auto option disables legacy support if no USB devices are connected. Disable option will keep USB devices available only for EFI applications.
- **XHCI Hand-off**
This is a workaround for OS without XHCI ownership, change should be claimed by XHCI driver.
- **USB Mass Storage Driver Support**
Enable/Disable USB Mass Storage Driver Support.
- **USB transfer time-out**
The time-out value for control, bulk, and interrupt transfers.
- **Device reset time-out**
USB mass storage device Start Unit command Time-out.
- **Device power-up delay**
Maximum time the device will take before it properly reports itself to the host controller.
'Auto' uses default value: for a Root port it is 100ms, for a Hub port the delay is taken from Hub descriptor.

3.2.3.9 Platform Trust Technology

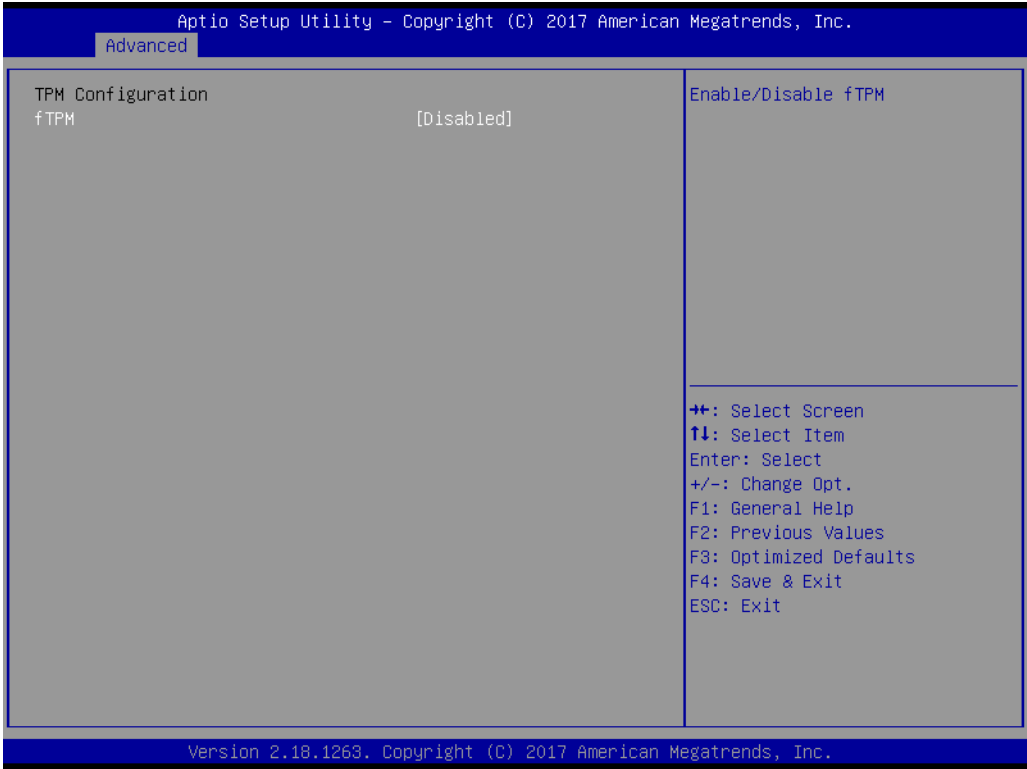


Figure 3.23 Platform Trust Technology

- **fTPM**
Enable/Disable fTPM.

3.2.3.10 Security Configuration

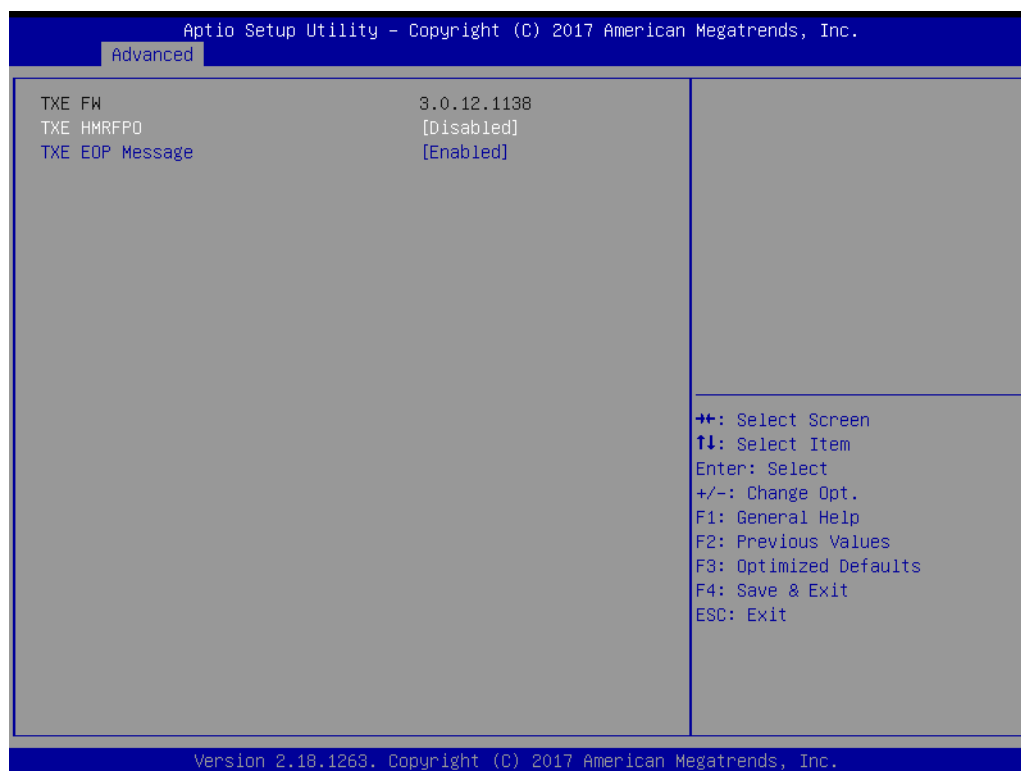


Figure 3.24 Security Configuration

- **TXE HMRFP0**
Enable/Disable TXE HMRFP0.
- **TXE EOP Message**
Send EOP message before entering OS.

3.2.4 Chipset

Select the Chipset tab from the SOM-6869 setup screen to enter the Chipset BIOS Setup screen. You can display a Chipset BIOS Setup option by highlighting it using by the <Arrow> keys. All Plug and Play BIOS Setup options are described in this section. The Plug and Play BIOS Setup screen is shown below.



Figure 3.25 Chipset Setup

- **North Bridge**
North Bridge Parameters.
- **South Bridge**
South Bridge Parameters.
- **Uncore Configuration**
Uncore Configuration.
- **South Cluster Configuration**
South Cluster Configuration.

3.2.4.1 North Bridge

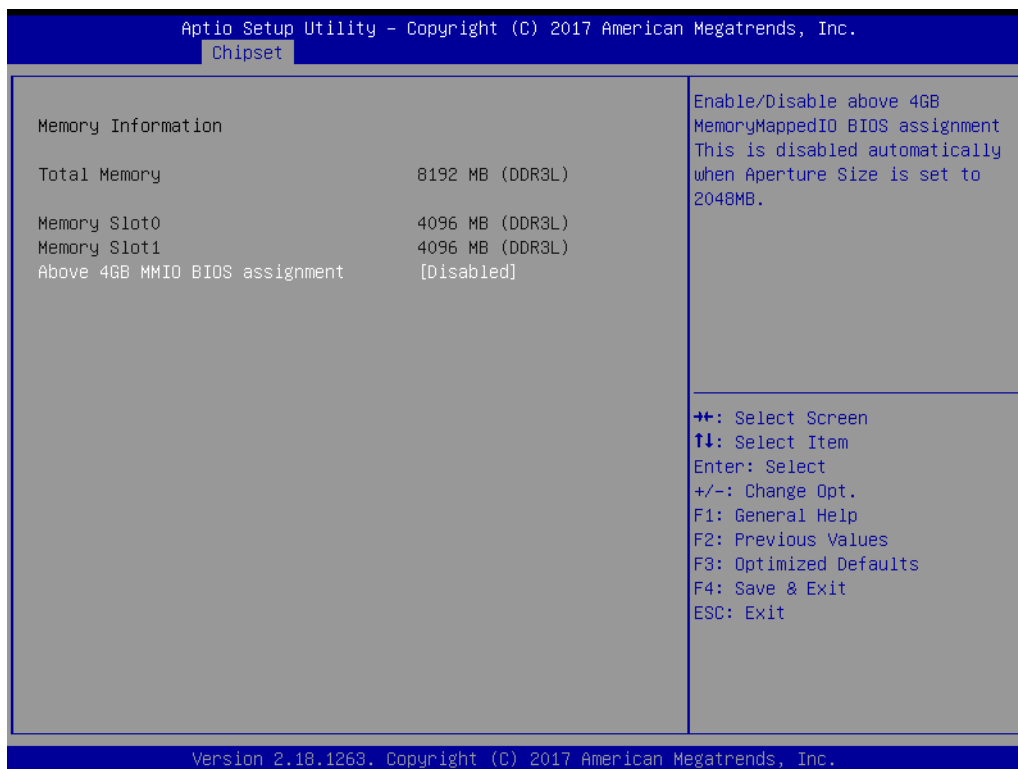


Figure 3.26 North Bridge

- **Above 4GB MMIO BIOS assignment**
Enable/Disable above 4GB MemoryMappedIO BIOS assignment. This is disabled automatically when Aperture Size is set to 2048MB.

3.2.4.2 South Bridge

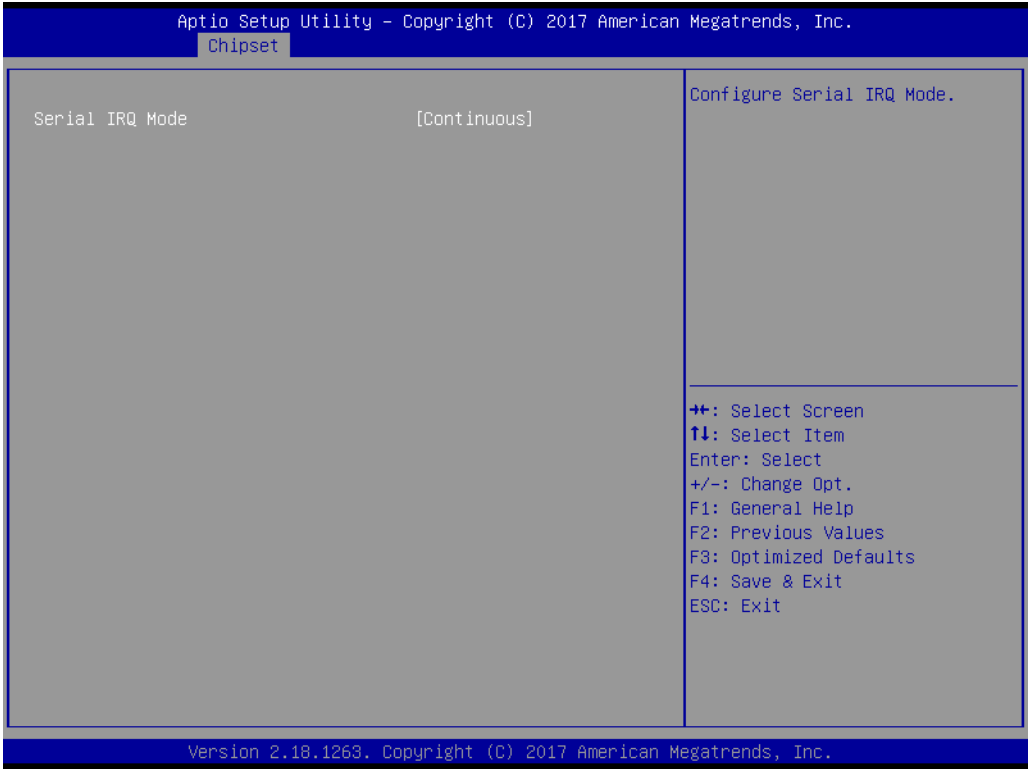


Figure 3.27 South Bridge

- **Serial IRQ Mode**
Configure Serial IRQ Mode.

3.2.4.3 Uncore Configuration

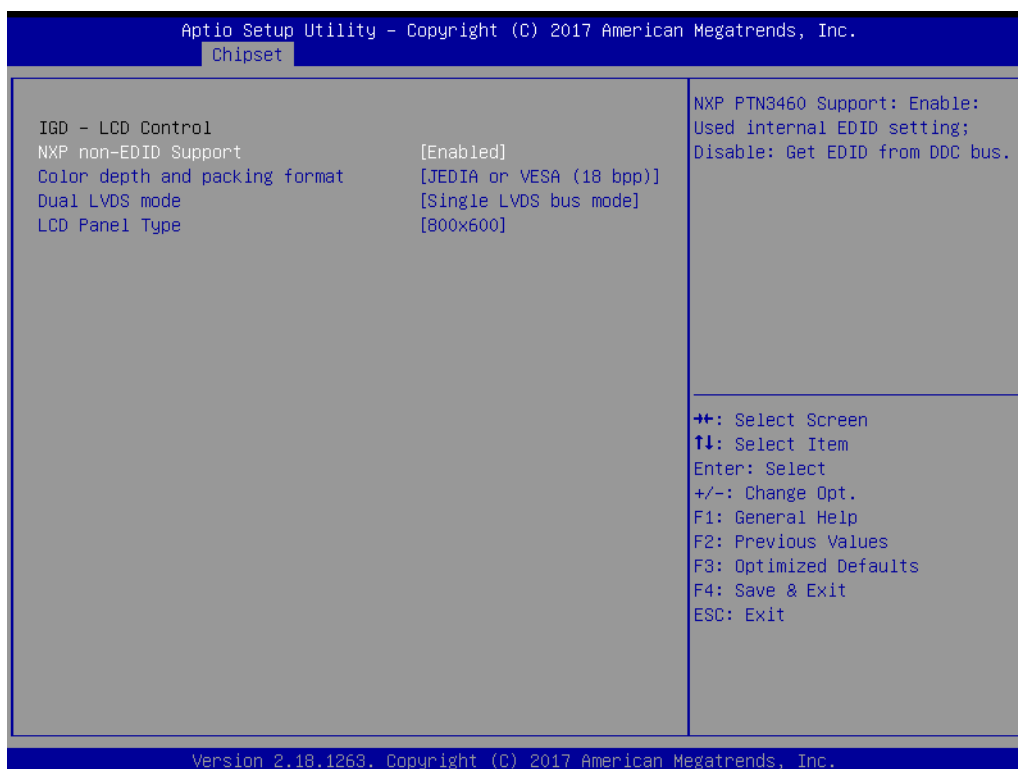


Figure 3.28 Uncore Configuration

- **NXP non-EDID Support**
NXP PTN3460 Support: Enable: Used internal EDID setting; Disable: Get EDID from DDC bus.
- **Color depth and packing format**
Select Color depth and packing format setting.
- **Dual LVDS mode**
Select Dual LVDS mode settings.
- **LCD Panel Type**
Select LCD panel used by Internal Graphics Device by selecting the appropriate setup item.

3.2.4.4 South Cluster Configuration

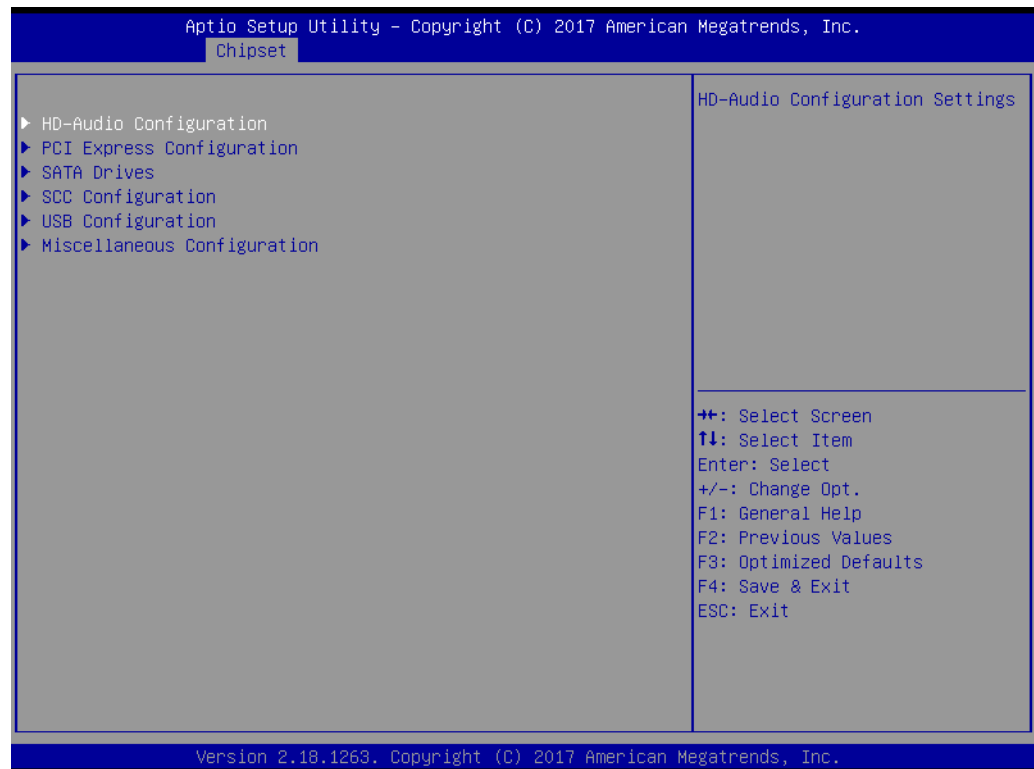


Figure 3.29 South Cluster Configuration

- **HD-Audio Configuration**
HD-Audio Configuration Settings.
- **PCI Express Configuration**
PCI Express Configuration Settings.
- **SATA Drives**
Press <Enter> to select the SATA Device Configuration Setup options.
- **SCC Configuration**
SCC Configuration Settings.
- **USB Configuration**
USB Configuration Settings.
- **Miscellaneous Configuration**
Enable/Disable Misc. Features.

HD-Audio Configuration

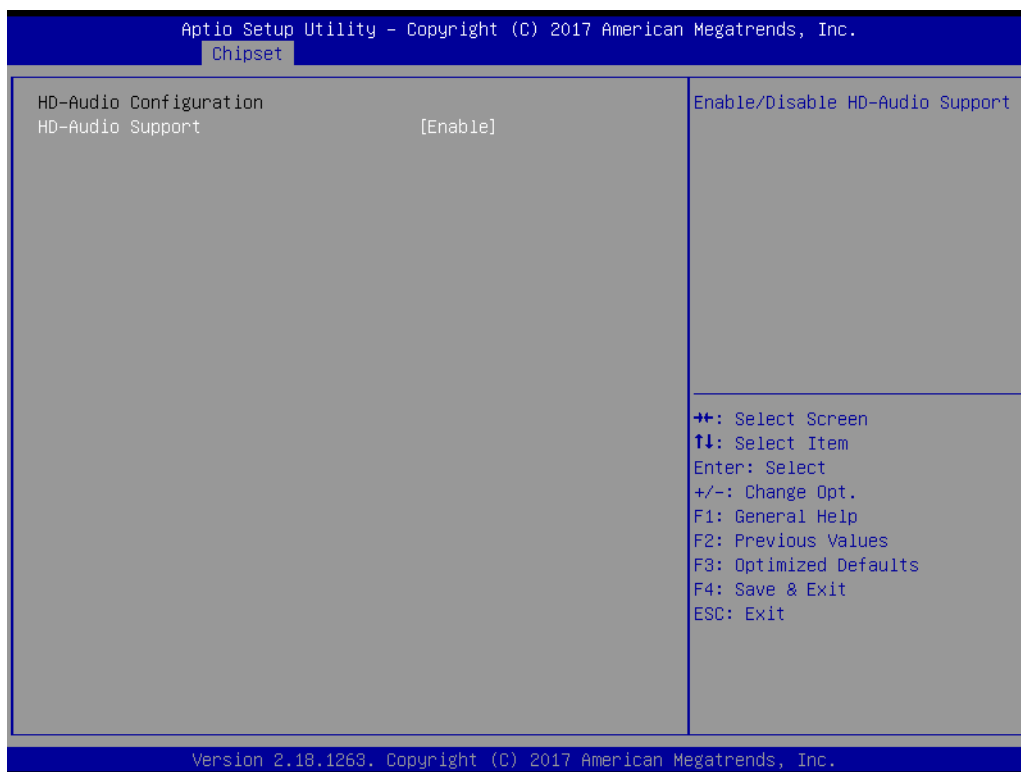


Figure 3.30 HD-Audio Configuration

- **HD-Audio Support**
Enable/Disable HD-Audio Support.

PCI Express Configuration

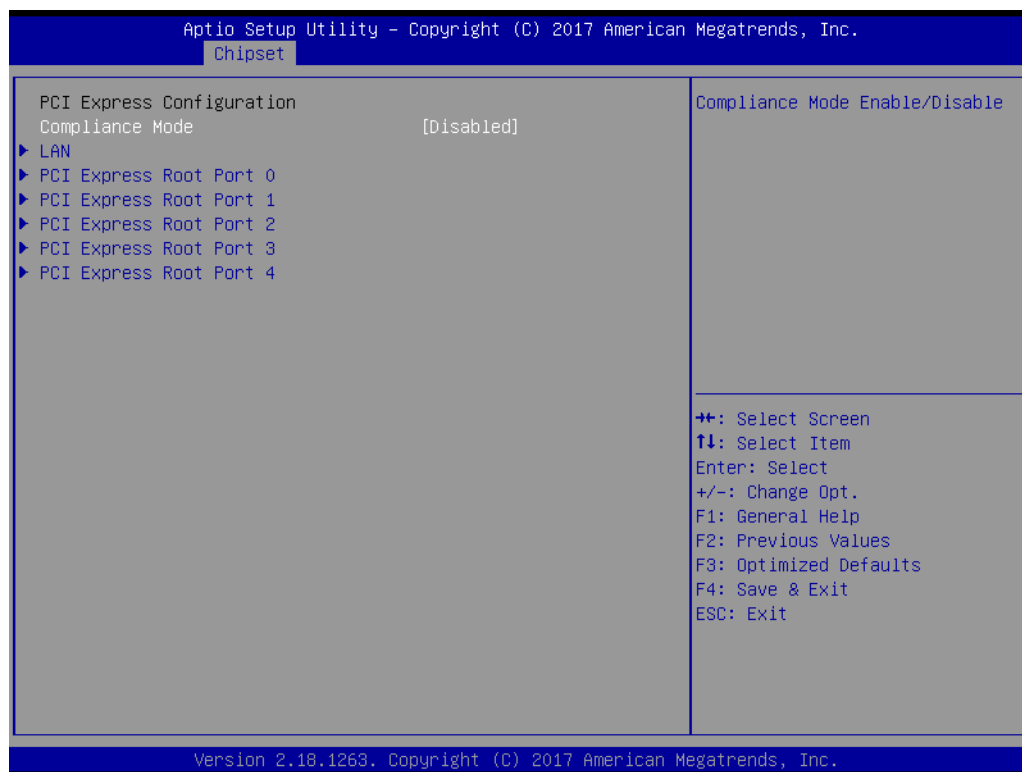


Figure 3.31 PCI Express Configuration

- **Compliance Mode**
Compliance Mode Enable/Disable.
- **LAN**
Control the PCI Express Root Port.
Auto: To disable unused root port automatically for the most optimum power savings.
Enable: Enable PCIe root port.
Disable: Disable PCIe root port.
- **PCI Express Root Port 0**
Control the PCI Express Root Port.
Auto: To disable unused root port automatically for the most optimum power savings.
Enable: Enable PCIe root port.
Disable: Disable PCIe root port.
- **PCI Express Root Port 1**
Control the PCI Express Root Port
Auto: To disable unused root port automatically for the most optimum power savings.
Enable: Enable PCIe root port.
Disable: Disable PCIe root port.

■ **PCI Express Root Port 2**

Control the PCI Express Root Port

Auto: To disable unused root port automatically for the most optimum power savings.

Enable: Enable PCIe root port.

Disable: Disable PCIe root port.

■ **PCI Express Root Port 3**

Control the PCI Express Root Port

Auto: To disable unused root port automatically for the most optimum power savings.

Enable: Enable PCIe root port.

Disable: Disable PCIe root port.

■ **PCI Express Root Port 4**

Control the PCI Express Root Port

Auto: To disable unused root port automatically for the most optimum power savings.

Enable: Enable PCIe root port.

Disable: Disable PCIe root port.

– LAN

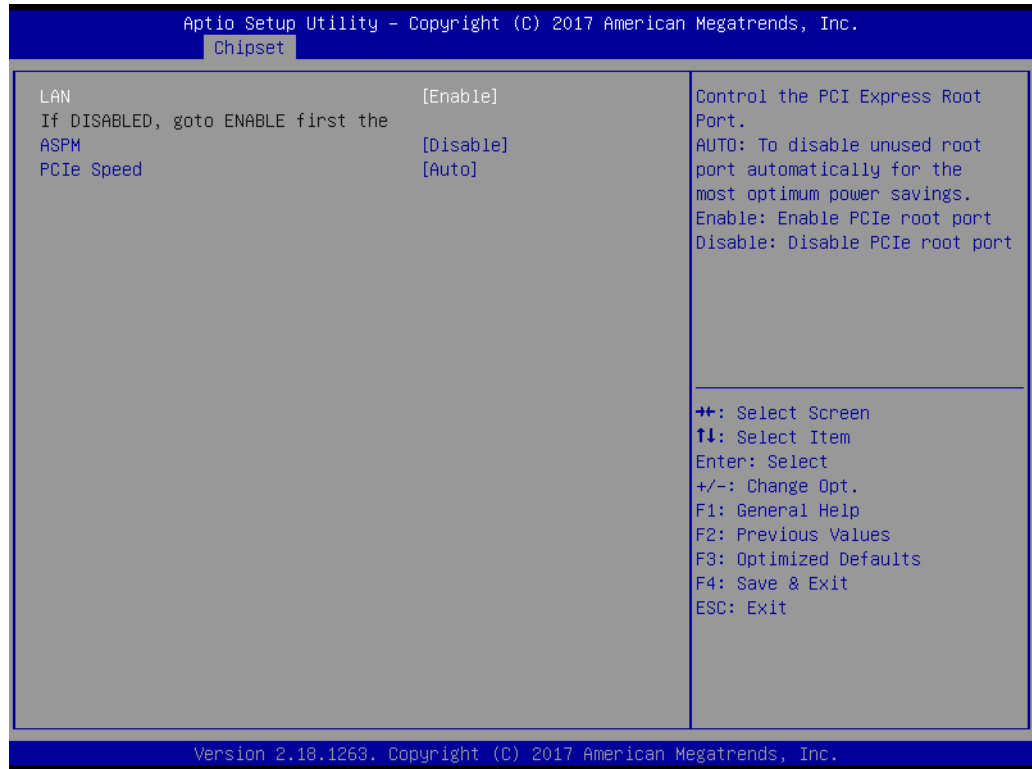


Figure 3.32 LAN

- **LAN**
Control the PCI Express Root Port.
Auto: To disable unused root port automatically for the most optimum power savings.
Enable: Enable PCIe root port.
Disable: Disable PCIe root port.
- **ASPM**
PCI Express Active State Power Management settings.
- **PCIe Speed**
Configure PCIe Speed.

– PCI Express Root Port 0 Configuration



Figure 3.33 PCI Express Root Port 0 Configuration

- **PCI Express Root Port 0**
Control the PCI Express Root Port.
Auto: To disable unused root port automatically for the most optimum power savings.
Enable: Enable PCIe root port.
Disable: Disable PCIe root port.
- **ASPM**
PCI Express Active State Power Management settings.
- **PCIe Speed**
Configure PCIe Speed.

– PCI Express Root Port 1 Configuration



Figure 3.34 PCI Express Root Port 1 Configuration

- **PCI Express Root Port 1**
Control the PCI Express Root Port.
Auto: To disable unused root port automatically for the most optimum power savings.
Enable: Enable PCIe root port.
Disable: Disable PCIe root port.
- **ASPM**
PCI Express Active State Power Management settings.
- **PCIe Speed**
Configure PCIe Speed.

– PCI Express Root Port 2 Configuration

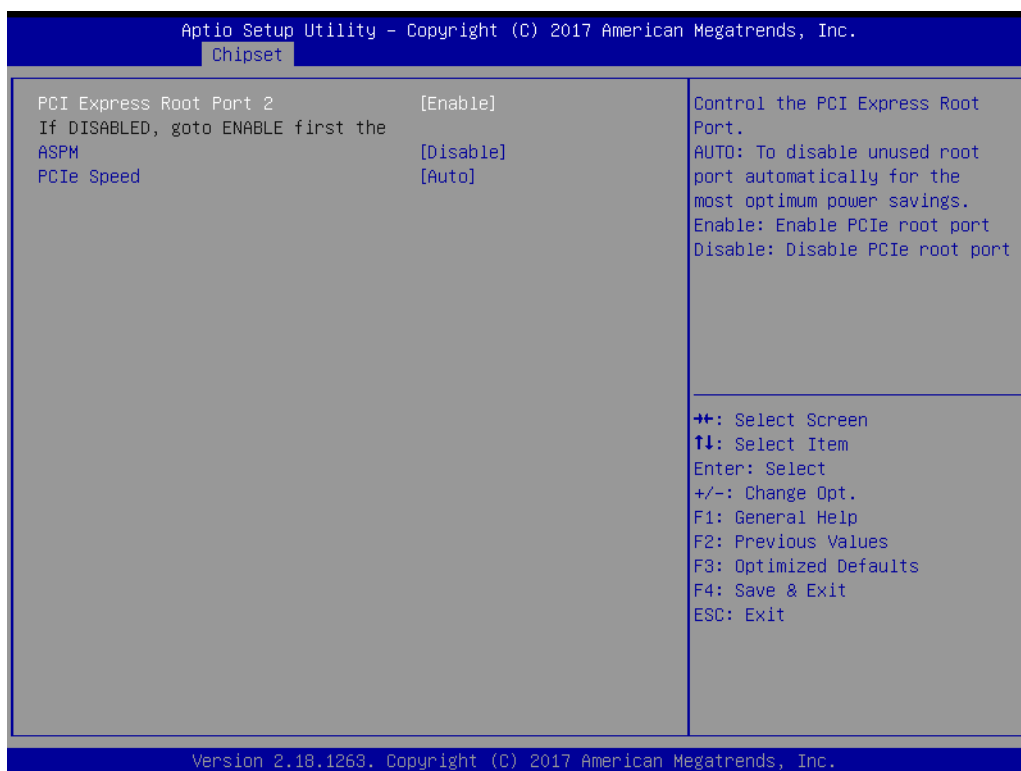


Figure 3.35 PCI Express Root Port 2 Configuration

- **PCI Express Root Port 2**
Control the PCI Express Root Port.
Auto: To disable unused root port automatically for the most optimum power savings.
Enable: Enable PCIe root port.
Disable: Disable PCIe root port.
- **ASPM**
PCI Express Active State Power Management settings.
- **PCIe Speed**
Configure PCIe Speed.

– PCI Express Root Port 3 Configuration



Figure 3.36 PCI Express Root Port 3 Configuration

- **PCI Express Root Port 3**
Control the PCI Express Root Port.
Auto: To disable unused root port automatically for the most optimum power savings.
Enable: Enable PCIe root port.
Disable: Disable PCIe root port.
- **ASPM**
PCI Express Active State Power Management settings.
- **PCIe Speed**
Configure PCIe Speed.

– PCI Express Root Port 4 Configuration

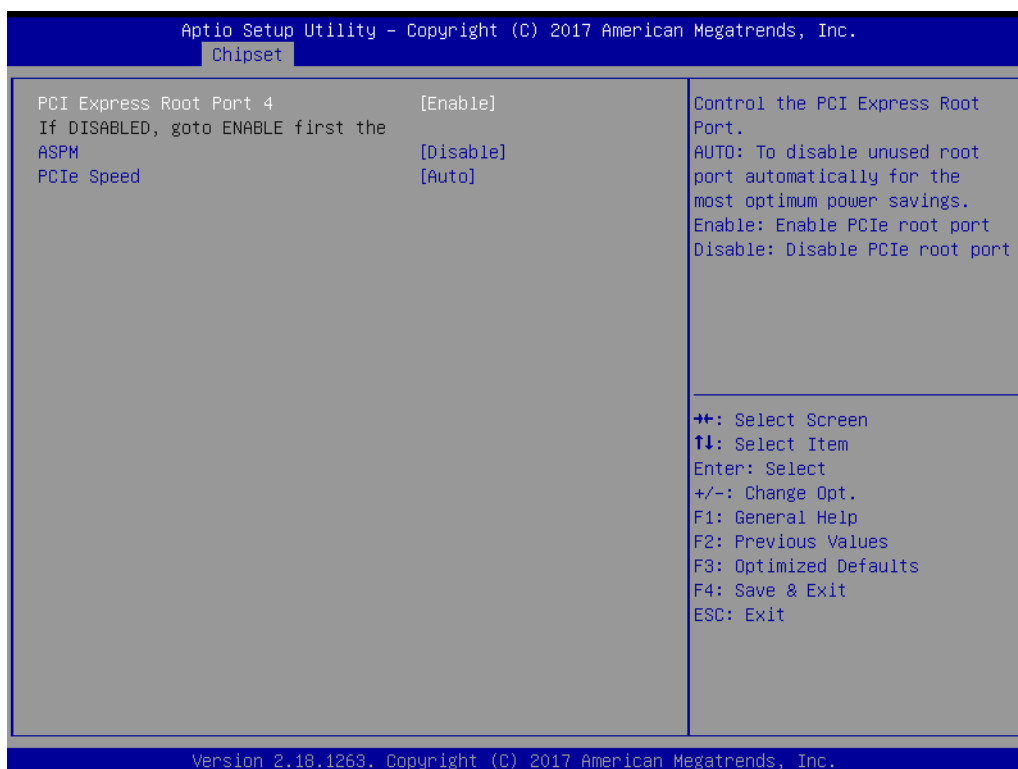


Figure 3.37 PCI Express Root Port 4 Configuration

- **PCI Express Root Port 4**
Control the PCI Express Root Port.
Auto: To disable unused root port automatically for the most optimum power savings.
Enable: Enable PCIe root port.
Disable: Disable PCIe root port.
- **ASPM**
PCI Express Active State Power Management settings.
- **PCIe Speed**
Configure PCIe Speed.

SATA Drives

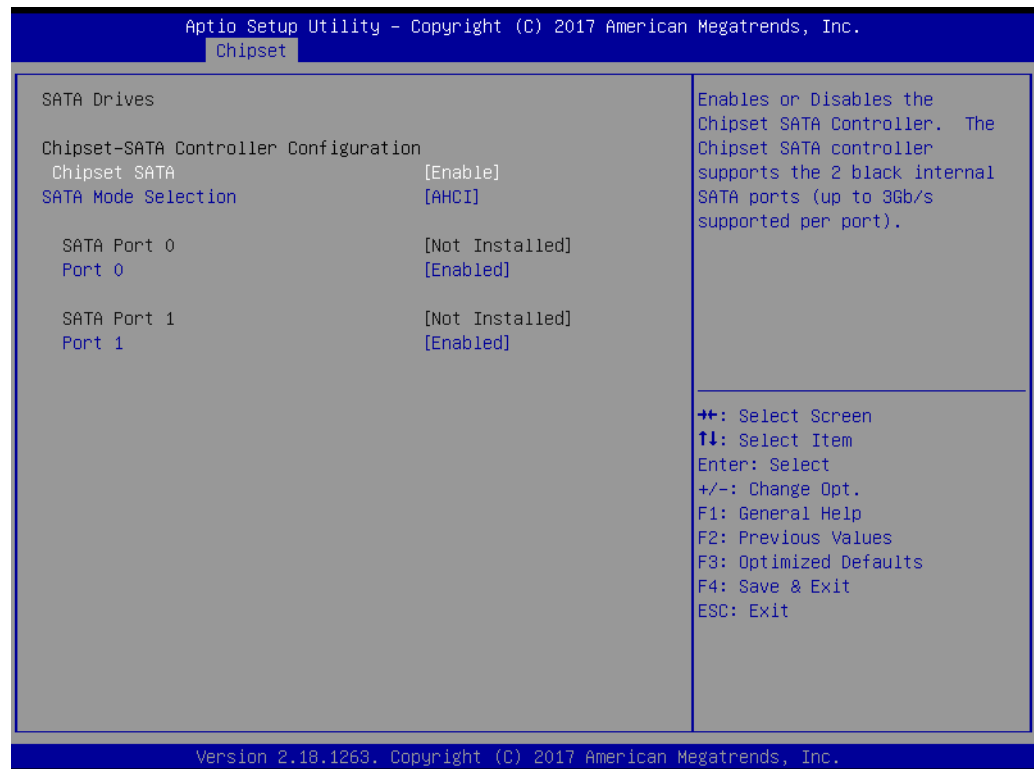


Figure 3.38 SATA Drives

- **Chipset SATA**
Enables or Disables the chipset SATA controller. The Chipset SATA controller supports the 2 black internal SATA ports (up to 3Gb/s supported per port).
- **SATA Mode Selection**
Determines how SATA controller(s) operate.
- **SATA Port 0**
Enable or Disable SATA Port.
- **SATA Port 1**
Enable or Disable SATA Port.

SCC Configuration

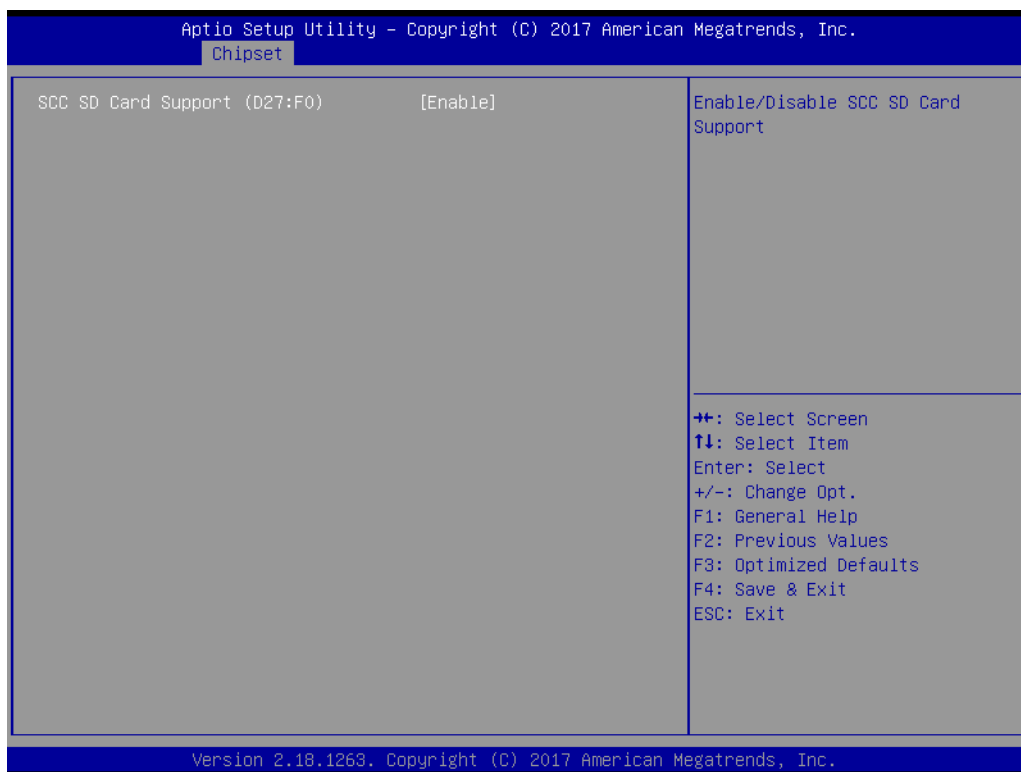


Figure 3.39 SCC Configuration

- **SCC SD Card Support (D27:F0)**
Enable/Disable SCC SD card support.

USB Configuration

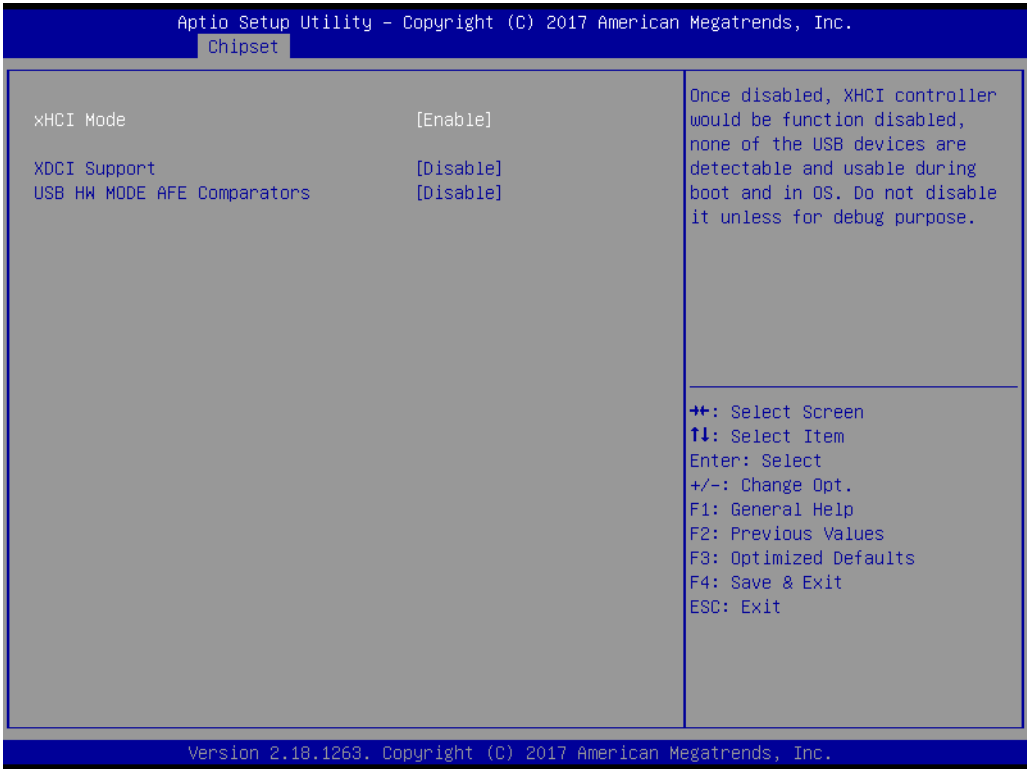


Figure 3.40 USB Configuration

- **xHCI Mode**
Once disabled, XHCI controller function would be disabled and none of the USB devices are detectable and usable during bootup and in the OS. Do not disable it unless for debugging purposes.
- **XDCI Support**
Enable/Disable XDCI.
- **USB HW MODE AFE Comparators**
Enable/Disable USB HW MODE AFE comparators.

Miscellaneous Configuration



Figure 3.41 Miscellaneous Configuration

- **State After G3**
Specify what state to go to when power is re-applied after a power failure (G3 state).
 S0 State: System will boot directly as soon as power applied.
 S5 State: System keeps in power-off state until power button is pressed.
- **Wake On Lan**
Enable or Disable the Wake on Lan.
- **BIOS Lock**
Enable/Disable the SC BIOS Lock Enable features. Required to be enabled to ensure SMM protection of flash.

3.2.5 Security Setting

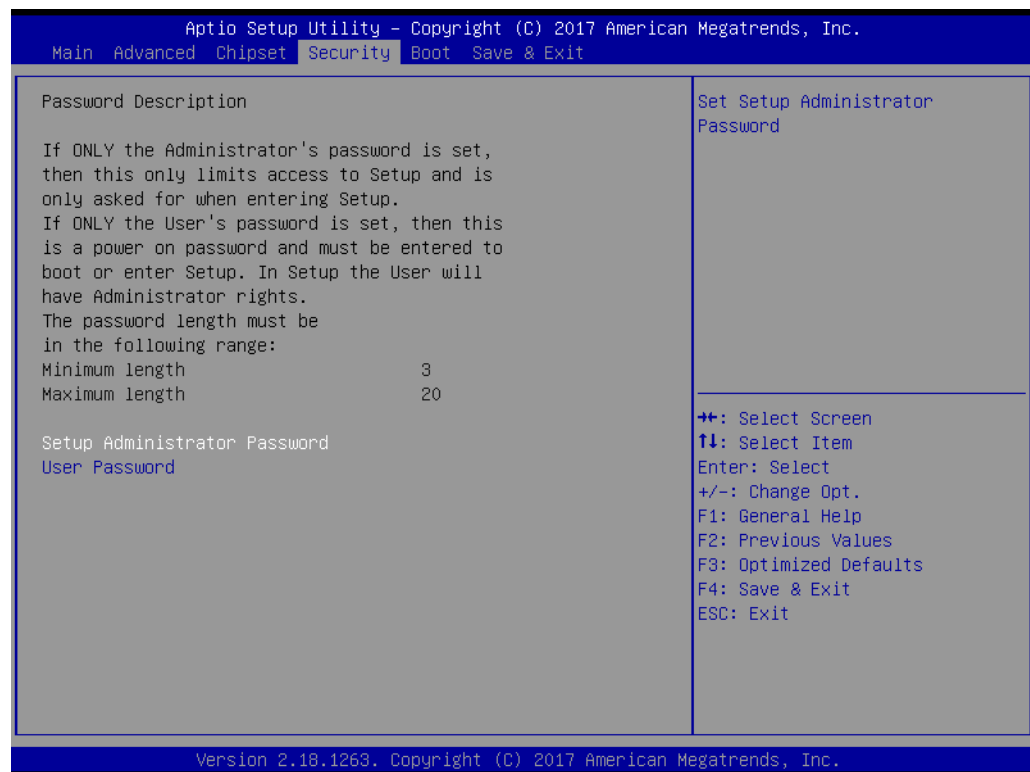


Figure 3.42 Security Setup

Select Security Setup from the SOM-6869 Setup main BIOS setup menu. All Security Setup options, such as password protection is described in this section. To access the sub menu for the following items, select the item and press <Enter>:

■ **Change Administrator / User Password:**

Select this option and press <ENTER> to access the sub menu, and then type in the password.

3.2.6 Boot Settings

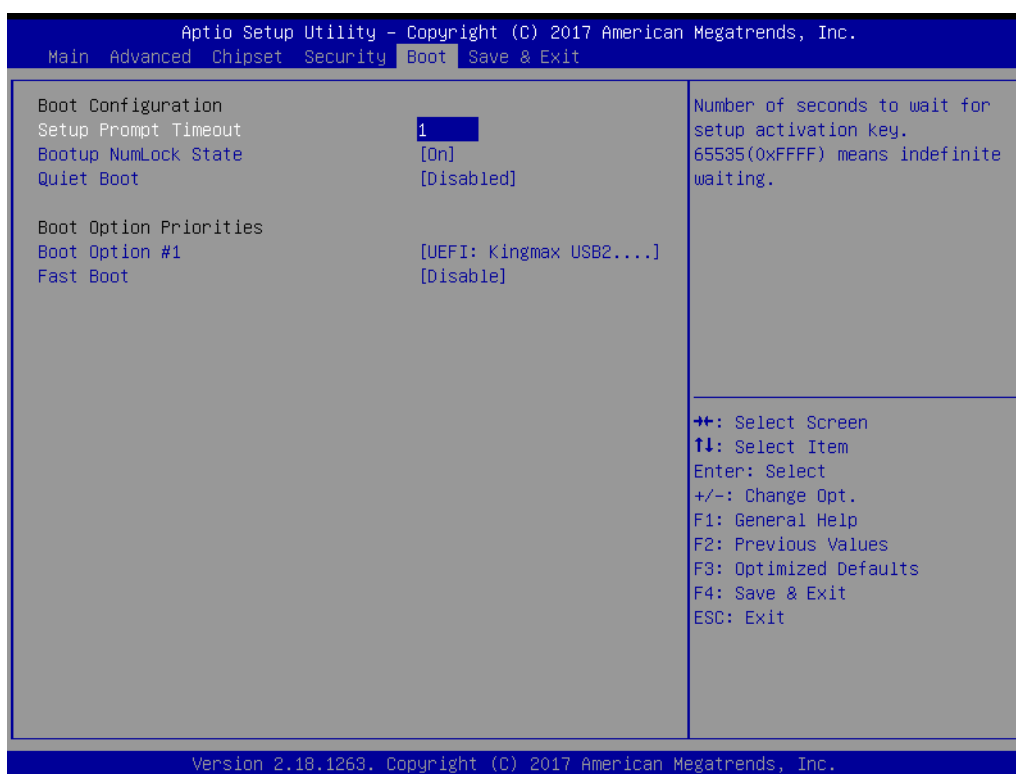


Figure 3.43 Boot Setting

- **Setup Prompt Timeout**
This item allows users to select the number of seconds to wait for setup activation key. Number of seconds to wait for setup activation key.
- **65535(0xFFFF) means indefinite waiting.**
- **Bootup NumLock State**
Select the keyboard Numlock state.
- **Quiet Boot**
Enable or Disables Quiet Boot option.
- **Fast Boot**
Enable or Disable FastBoot features. Most probes are skipped to reduce time cost during boot.

3.2.7 Save & Exit

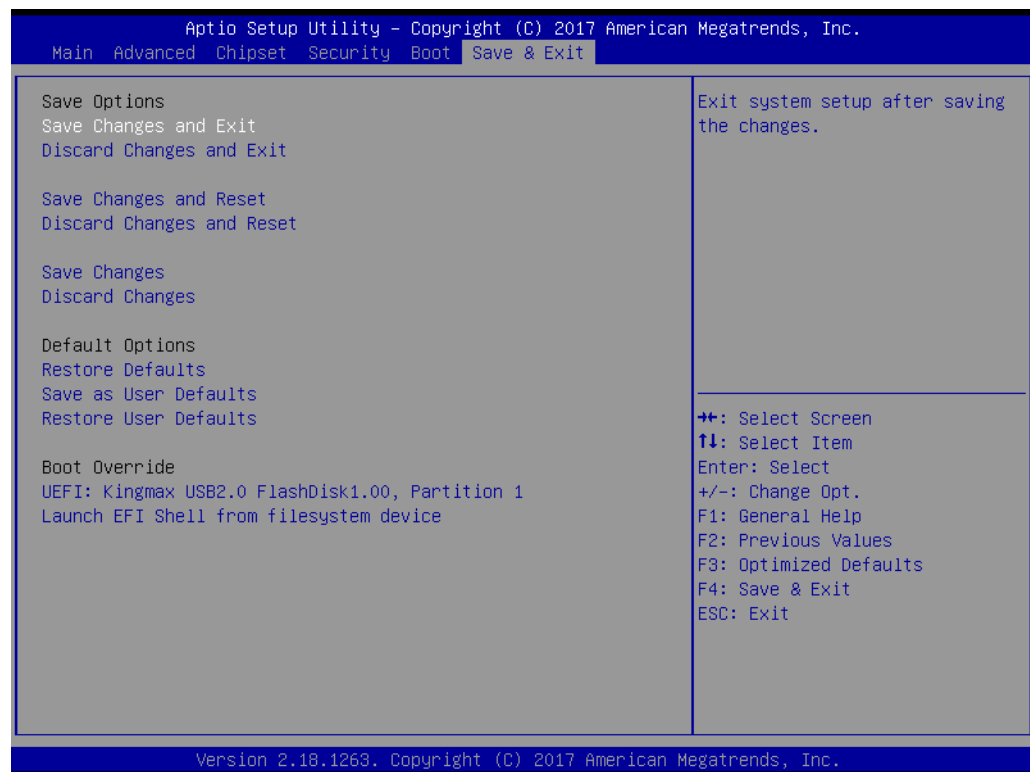


Figure 3.44 Save & Exit

- **Save Changes and Exit**
Exit system setup after saving the changes.
- **Discard Changes and Exit**
Exit system setup without saving any changes.
- **Save Changes and Reset**
Reset the system after saving the changes.
- **Discard Changes and Reset**
Reset system setup without saving any changes.
- **Save Changes**
Save Changes done so far to any of the setup options.
- **Discard Changes**
Discard Changes done so far to any of the setup options.
- **Restore Defaults**
Restore/Load Default values for all the setup options.
- **Save as User Defaults**
Save the changes done so far as User Defaults.
- **Restore User Defaults**
Restore the User Defaults to all the setup options.
- **Launch EFI Shell from file system device**
Attempts to Launch EFI Shell application (Shell.efi) from one of the available file-system devices.

Chapter 4

S/W Introduction & Installation

- S/W Introduction
- Driver Installation
- Advantech iManager

4.1 S/W Introduction

The mission of Advantech Embedded Software Services is to "Enhance quality of life with Advantech platforms and Microsoft Windows embedded technology." We enable Windows Embedded software products on Advantech platforms to more effectively support the embedded computing community. Customers are freed from the hassle of dealing with multiple vendors (Hardware suppliers, System integrators, Embedded OS distributor) for projects. Our goal is to make Windows Embedded Software solutions easily and widely available to the embedded computing community.

4.2 Driver Installation

The Intel Chipset Software Installation (CSI) utility installs the Windows INF files that outline to the operating system how the chipset components will be configured.

4.2.1 Windows Driver Setup

To install the drivers on a windows-based operation system, please connect to internet and browse the website <http://support.advantech.com.tw> and download the drivers that you want to install and follow Driver Setup instructions to complete the installation.

4.2.2 Other OS

To install the drivers for Linux or other OS, please connect to internet and browse the website <http://support.advantech.com.tw> to download the setup file.

4.3 Advantech iManager

Advantech's platforms come equipped with iManager, a micro controller that provides embedded features for system integrators. Embedded features have been moved from the OS/BIOS level to the board level, to increase reliability and simplify integration.

iManager runs whether the operating system is running or not; it can count the boot times and running hours of the device, monitor device health, and provide an advanced watchdog to handle errors just as they happen. iManager also comes with a secure & encrypted EEPROM for storing important security key or other customer define information. All the embedded functions are configured through API and provide corresponding utilities to demonstrate. These APIs comply with PICMG EAPI (Embedded Application Programmable Interface) specification and unify in the same structures. It makes these embedded features easier to integrate, speed up developing schedule, and provide the customer's software continuity while upgrade hardware. For more details of how to use the APIs and utilities, please refer to Advantech iManager 2.0 Software API User Manual.

Control**GPIO**

General Purpose Input/Output is a flexible parallel interface that allows a variety of custom connections. It allows users to monitor the level of signal input or set the output status to switch on/off a device. Our API also provides Programmable GPIO, which allows developers to dynamically set the GPIO input or output status.

**SMBus**

SMBus is the System Management Bus defined by Intel® Corporation in 1995. It is used in personal computers and servers for low-speed system management communications. The SMBus API allows a developer to interface a embedded system environment and transfer serial messages using the SMBus protocols, allowing multiple simultaneous device control.

**I2C**

I2C is a bi-directional two wire bus that was developed by Philips for use in their televisions in the 1980s. The I2C API allows a developer to interface with an embedded system environment and transfer serial messages using the I2C protocols, allowing multiple simultaneous device control.

Display**Brightness Control**

The Brightness Control API allows a developer to interface with an embedded device to easily control brightness.

**Backlight**

The Backlight API allows a developer to control the backlight (screen) on/off in an embedded device.

Monitor**Watchdog**

A watchdog timer (WDT) is a device that performs a specific operation after a certain period of time if something goes wrong and the system does not recover on its own. A watchdog timer can be programmed to perform a warm boot (restarting the system) after a certain number of seconds.

**Hardware Monitor**

The Hardware Monitor (HWM) API is a system health supervision API that inspects certain condition indexes, such as fan speed, temperature and voltage.

**Hardware Control**

The Hardware Control API allows developers to set the PWM (Pulse Width Modulation) value to adjust fan speed or other devices; it can also be used to adjust the LCD brightness.

Power Saving**CPU Speed**

Make use of Intel SpeedStep technology to reduce power consumption. The system will automatically adjust the CPU Speed depending on system loading.

**System Throttling**

Refers to a series of methods for reducing power consumption in computers by lowering the clock frequency. These APIs allow the user to lower the clock from 87.5% to 12.5%.

Appendix **A**

Pin Assignment

This appendix gives you the information about the hardware pin assignment of the SOM-6869 COM Express Compact CPU Module.

Sections include:

- SOM-6869 Pin Assignment

A.1 SOM-6869 Type 6 Pin Assignment

This section gives SOM-6869 pin assignment on COM Express connector which compliant with COM R2.1 Type 6 pin-out definitions. More details about how to use these pins and get design reference, please contact to Advantech for design guide, checklist, reference schematic, and other hardware/software supports.

SOM-6869 Row A,B

A1	GND (FIXED)	B1	GND (FIXED)
A2	GBE0_MDI3-	B2	GBE0_ACT#
A3	GBE0_MDI3+	B3	LPC_FRAME#
A4	GBE0_LINK100#	B4	LPC_AD0
A5	GBE0_LINK1000#	B5	LPC_AD1
A6	GBE0_MDI2-	B6	LPC_AD2
A7	GBE0_MDI2+	B7	LPC_AD3
A8	GBE0_LINK#	B8	N/A
A9	GBE0_MDI1-	B9	N/A
A10	GBE0_MDI1+	B10	LPC_CLK
A11	GND (FIXED)	B11	GND (FIXED)
A12	GBE0_MDI0-	B12	PWRBTN#
A13	GBE0_MDI0+	B13	SMB_CK
A14	N/A	B14	SMB_DAT
A15	SUS_S3#	B15	SMB_ALERT#
A16	SATA0_TX+	B16	SATA1_TX+
A17	SATA0_TX-	B17	SATA1_TX-
A18	SUS_S4#	B18	SUS_STAT#
A19	SATA0_RX+	B19	SATA1_RX+
A20	SATA0_RX-	B20	SATA1_RX-
A21	GND (FIXED)	B21	GND (FIXED)
A22	N/A	B22	N/A
A23	N/A	B23	N/A
A24	SUS_S5#	B24	PWR_OK
A25	N/A	B25	N/A
A26	N/A	B26	N/A
A27	BATLOW#	B27	WDT
A28	(S)ATA_ACT#	B28	N/A
A29	AC/HDA_SYNC	B29	N/A
A30	AC/HDA_RST#	B30	AC/HDA_SDIN0
A31	GND (FIXED)	B31	GND (FIXED)
A32	AC/HDA_BITCLK	B32	SPKR
A33	AC/HDA_SDOUT	B33	I2C_CK
A34	BIOS_DIS0#	B34	I2C_DAT
A35	THRMTRIP#	B35	THRM#
A36	USB6-	B36	USB7-
A37	USB6+	B37	USB7+
A38	USB_6_7_OC#	B38	USB_4_5_OC#
A39	USB4-	B39	USB5-
A40	USB4+	B40	USB5+

A41	GND (FIXED)	B41	GND (FIXED)
A42	USB2-	B42	USB3-
A43	USB2+	B43	USB3+
A44	USB_2_3_OC#	B44	USB_0_1_OC#
A45	USB0-	B45	USB1-
A46	USB0+	B46	USB1+
A47	VCC_RTC	B47	EXCD1_PERST#
A48	EXCD0_PERST#	B48	EXCD1_CPPE#
A49	EXCD0_CPPE#	B49	SYS_RESET#
A50	LPC_SERIRQ	B50	CB_RESET#
A51	GND (FIXED)	B51	GND (FIXED)
A52	N/A	B52	N/A
A53	N/A	B53	N/A
A54	GPI0	B54	GPO1
A55	PCIE_TX4+	B55	PCIE_RX4+
A56	PCIE_TX4-	B56	PCIE_RX4-
A57	GND	B57	GPO2
A58	PCIE_TX3+	B58	PCIE_RX3+
A59	PCIE_TX3-	B59	PCIE_RX3-
A60	GND (FIXED)	B60	GND (FIXED)
A61	PCIE_TX2+	B61	PCIE_RX2+
A62	PCIE_TX2-	B62	PCIE_RX2-
A63	GPI1	B63	GPO3
A64	PCIE_TX1+	B64	PCIE_RX1+
A65	PCIE_TX1-	B65	PCIE_RX1-
A66	GND	B66	WAKE0#
A67	GPI2	B67	WAKE1#
A68	PCIE_TX0+	B68	PCIE_RX0+
A69	PCIE_TX0-	B69	PCIE_RX0-
A70	GND (FIXED)	B70	GND (FIXED)
A71	LVDS_A0+	B71	LVDS_B0+
A72	LVDS_A0-	B72	LVDS_B0-
A73	LVDS_A1+	B73	LVDS_B1+
A74	LVDS_A1-	B74	LVDS_B1-
A75	LVDS_A2+	B75	LVDS_B2+
A76	LVDS_A2-	B76	LVDS_B2-
A77	LVDS_VDD_EN	B77	LVDS_B3+
A78	LVDS_A3+	B78	LVDS_B3-
A79	LVDS_A3-	B79	LVDS_BKLT_EN
A80	GND (FIXED)	B80	GND (FIXED)
A81	LVDS_A_CK+	B81	LVDS_B_CK+
A82	LVDS_A_CK-	B82	LVDS_B_CK-
A83	LVDS_I2C_CK	B83	LVDS_BKLT_CTRL
A84	LVDS_I2C_DAT	B84	VCC_5V_SBY
A85	GPI3	B85	VCC_5V_SBY
A86	N/A	B86	VCC_5V_SBY
A87	eDP_HPD	B87	VCC_5V_SBY
A88	PCIE_CLK_REF+	B88	BIOS_DIS1#

A89	PCIE_CLK_REF-	B89	VGA_RED
A90	GND (FIXED)	B90	GND (FIXED)
A91	SPI_POWER	B91	VGA_GRN
A92	SPI_MISO	B92	VGA_BLU
A93	GPO0	B93	VGA_HSYNC
A94	SPI_CLK	B94	VGA_VSYNC
A95	SPI_MOSI	B95	VGA_I2C_CK
A96	TPM_PP	B96	VGA_I2C_DAT
A97	N/A	B97	SPI_CS#
A98	SER0_TX	B98	RSVD
A99	SER0_RX	B99	RSVD
A100	GND (FIXED)	B100	GND (FIXED)
A101	SER1_TX	B101	FAN_PWMOUT
A102	SER1_RX	B102	FAN_TACHIN
A103	LID#	B103	SLEEP#
A104	VCC_12V	B104	VCC_12V
A105	VCC_12V	B105	VCC_12V
A106	VCC_12V	B106	VCC_12V
A107	VCC_12V	B107	VCC_12V
A108	VCC_12V	B108	VCC_12V
A109	VCC_12V	B109	VCC_12V
A110	GND (FIXED)	B110	GND (FIXED)

SOM-6869 Row C,D

C1	GND (FIXED)	D1	GND (FIXED)
C2	GND	D2	GND
C3	USB_SSRX0-	D3	USB_SSTX0-
C4	USB_SSRX0+	D4	USB_SSTX0+
C5	GND	D5	GND
C6	USB_SSRX1-	D6	USB_SSTX1-
C7	USB_SSRX1+	D7	USB_SSTX1+
C8	GND	D8	GND
C9	N/A	D9	N/A
C10	N/A	D10	N/A
C11	GND (FIXED)	D11	GND (FIXED)
C12	N/A	D12	N/A
C13	N/A	D13	N/A
C14	GND	D14	GND
C15	N/A	D15	DDI1_CTRLCLK_AUX+
C16	N/A	D16	DDI1_CTRLCLK_AUX-
C17	RSVD	D17	RSVD
C18	RSVD	D18	RSVD
C19	N/A	D19	N/A
C20	N/A	D20	N/A
C21	GND (FIXED)	D21	GND (FIXED)
C22	N/A	D22	N/A
C23	N/A	D23	N/A
C24	DDI1_HPD	D24	RSVD

C25	N/A	D25	RSVD
C26	N/A	D26	DDI1_PAIR0+
C27	RSVD	D27	DDI1_PAIR0-
C28	RSVD	D28	RSVD
C29	N/A	D29	DDI1_PAIR1+
C30	N/A	D30	DDI1_PAIR1-
C31	GND (FIXED)	D31	GND (FIXED)
C32	DDI2_CTRLCLK_AUX+ (option)	D32	DDI1_PAIR2+
C33	DDI2_CTRLCLK_AUX- (option)	D33	DDI1_PAIR2-
C34	DDI2_DDC_AUX_SEL	D34	DDI1_DDC_AUX_SEL
C35	RSVD	D35	RSVD
C36	N/A	D36	DDI1_PAIR3+
C37	N/A	D37	DDI1_PAIR3-
C38	N/A	D38	RSVD
C39	N/A	D39	DDI2_PAIR0+ (option)
C40	N/A	D40	DDI2_PAIR0- (option)
C41	GND (FIXED)	D41	GND (FIXED)
C42	N/A	D42	DDI2_PAIR1+ (option)
C43	N/A	D43	DDI2_PAIR1- (option)
C44	N/A	D44	DDI2_HPD (option)
C45	RSVD	D45	RSVD
C46	N/A	D46	DDI2_PAIR2+ (option)
C47	N/A	D47	DDI2_PAIR2- (option)
C48	RSVD	D48	RSVD
C49	N/A	D49	DDI2_PAIR3+ (option)
C50	N/A	D50	DDI2_PAIR3- (option)
C51	GND (FIXED)	D51	GND (FIXED)
C52	N/A	D52	N/A
C53	N/A	D53	N/A
C54	N/A	D54	N/A
C55	N/A	D55	N/A
C56	N/A	D56	N/A
C57	N/A	D57	TYPE2#
C58	N/A	D58	N/A
C59	N/A	D59	N/A
C60	GND (FIXED)	D60	GND (FIXED)
C61	N/A	D61	N/A
C62	N/A	D62	N/A
C63	RSVD	D63	RSVD
C64	RSVD	D64	RSVD
C65	N/A	D65	N/A
C66	N/A	D66	N/A
C67	RSVD	D67	GND
C68	N/A	D68	N/A
C69	N/A	D69	N/A
C70	GND (FIXED)	D70	GND (FIXED)

C71	N/A	D71	N/A
C72	N/A	D72	N/A
C73	GND	D73	GND
C74	N/A	D74	N/A
C75	N/A	D75	N/A
C76	GND	D76	GND
C77	RSVD	D77	RSVD
C78	N/A	D78	N/A
C79	N/A	D79	N/A
C80	GND (FIXED)	D80	GND (FIXED)
C81	N/A	D81	N/A
C82	N/A	D82	N/A
C83	RSVD	D83	RSVD
C84	GND	D84	GND
C85	N/A	D85	N/A
C86	N/A	D86	N/A
C87	GND	D87	GND
C88	N/A	D88	N/A
C89	N/A	D89	N/A
C90	GND (FIXED)	D90	GND (FIXED)
C91	N/A	D91	N/A
C92	N/A	D92	N/A
C93	GND	D93	GND
C94	N/A	D94	N/A
C95	N/A	D95	N/A
C96	GND	D96	GND
C97	RSVD	D97	RSVD
C98	N/A	D98	N/A
C99	N/A	D99	N/A
C100	GND (FIXED)	D100	GND (FIXED)
C101	N/A	D101	N/A
C102	N/A	D102	N/A
C103	GND	D103	GND
C104	VCC_12V	D104	VCC_12V
C105	VCC_12V	D105	VCC_12V
C106	VCC_12V	D106	VCC_12V
C107	VCC_12V	D107	VCC_12V
C108	VCC_12V	D108	VCC_12V
C109	VCC_12V	D109	VCC_12V
C110	GND (FIXED)	D110	GND (FIXED)

Appendix **B**

Watchdog Timer

This appendix gives you the information about the watchdog timer programming on the SOM-6869 COM Express Compact CPU Module.

Sections include:

- Watchdog Timer Programming

B.1 Programming the Watchdog Timer

Trigger Event	Note
IRQ	IRQ5, 7, 14 (BIOS setting default disable)**
NMI	N/A
SCI	Power button event
Power Off	Support
H/W Restart	Support
WDT Pin Activate	Support

** WDT new driver support automatically select available IRQ number from BIOS, and then set to EC. Only Win8.1 and Win10 support it.
In other OS, it will still use IRQ number from BIOS setting as usual.

For details, please refer to iManager & Software API User Manual.

Appendix **C**

Programming GPIO

This Appendix gives the illustration of the General Purpose Input and Output pin setting.

Sections include:

- System I/O ports

C.1 GPIO Register

GPIO Byte Mapping	H/W Pin Name
BIT0	GPO0
BIT1	GPO1
BIT2	GPO2
BIT3	GPO3
BIT4	GPI0
BIT5	GPI1
BIT6	GPI2
BIT7	GPI3

For details, please refer to iManager & Software API User Manual

Appendix **D**

System Assignments

This appendix gives you the information about the system resource allocation on the SOM-6869 COM Express Compact CPU Module

Sections include:

- System I/O ports
- Interrupt Assignments
- 1st MB Memory Map

D.1 System I/O Ports

Table D.1: System I/O ports

Addr.Range(Hex)	Device
0000-006F	PCI Express Root Complex
0020-0021	Programmable interrupt controller
0024-0025	Programmable interrupt controller
0028-0029	Programmable interrupt controller
002C-002D	Programmable interrupt controller
002E-002F	Motherboard resources
0030-0031	Programmable interrupt controller
0034-0035	Programmable interrupt controller
0038-0039	Programmable interrupt controller
003C-003D	Programmable interrupt controller
0040-0043	System timer
004E-004F	Motherboard resources
0050-0053	System timer
0060-0060	Standard PS/2 Keyboard
0060-006F	Motherboard resources
0061-0061	Motherboard resources
0062-0062	Microsoft ACPI-Compliant Embedded Controller
0063-0063	Motherboard resources
0064-0064	Standard PS/2 Keyboard
0065-0065	Motherboard resources
0066-0066	Microsoft ACPI-Compliant Embedded Controller
0067-0067	Motherboard resources
0070-0070	Motherboard resources
0070-0077	System CMOS/real time clock
0078-0CF7	PCI Express Root Complex
0080-008F	Motherboard resources
0092-0092	Motherboard resources
00A0-00A1	Programmable interrupt controller
00A4-00A5	Programmable interrupt controller
00A8-00A9	Programmable interrupt controller
00AC-00AD	Programmable interrupt controller
00B0-00B1	Programmable interrupt controller
00B2-00B3	Motherboard resources
00B4-00B5	Programmable interrupt controller
00B8-00B9	Programmable interrupt controller
00BC-00BD	Programmable interrupt controller
0280-028F	Motherboard resources
0290-029F	Motherboard resources
0299-029A	Motherboard resources
029E-02AD	Motherboard resources
02A0-02BF	Motherboard resources
02C0-02DF	Motherboard resources
02E8-02EF	Communications Port (COM4)

Table D.1: System I/O ports

02F0-02F7	Motherboard resources
02F8-02FF	Communications Port (COM2)
0378-037F	Printer Port (LPT1)
03E8-03EF	Communications Port (COM3)
03F8-03FF	Communications Port (COM1)
0400-047F	Motherboard resources
04D0-04D1	Programmable interrupt controller
0500-05EF	Motherboard resources
0600-061F	Motherboard resources
0680-069F	Motherboard resources
0D00-FFFF	PCI Express Root Complex
164E-164F	Motherboard resources
E000-E01F	Intel(R) I210 Gigabit Network Connection
E000-EFFF	Intel(R) Celeron(R)/Pentium(R)Processor PCI Express Root Port – 5AD7
F000-F03F	Intel(R) HD Graphics
F000-F03F	Video Controller (VGA Compatible)
F040-F05F	Intel(R) Celeron(R)/Pentium(R) Processor SMBus - 5AD4
F060-F07F	Standard SATA AHCI Controller
F080-F083	Standard SATA AHCI Controller
F090-F097	Standard SATA AHCI Controller

D.2 Interrupt Assignments

Table D.2: Interrupt Assignments

Interrupt#	Interrupt Source
IRQ 0	System timer
IRQ 1	Standard PS/2 Keyboard
IRQ 3	Communications Port (COM2) Intel SD Host Controller
IRQ 4	Communications Port (COM1)
IRQ 5	Communications Port (COM4)
IRQ 6	Communications Port (COM3)
IRQ 8	System CMOS/real time clock
IRQ 9	Intel(R) I210 Gigabit Network Connection Intel(R) Celeron(R)/Pentium(R)Processor PCI Express Root Port – 5AD6 Intel(R) Celeron(R)/Pentium(R)Processor PCI Express Root Port – 5AD8
IRQ 10	Intel(R) Celeron(R)/Pentium(R)Processor PCI Express Root Port – 5ADA Intel(R) Trusted Execution Engine Interface Standard SATA AHCI Controller
IRQ 11	Intel(R) Celeron(R)/Pentium(R)Processor PCI Express Root Port – 5ADB
IRQ 12	Microsoft PS/2 Mouse
IRQ 14	Intel(R) Serial IO GPIO Host Controller –INT3452

Table D.2: Interrupt Assignments

Intel SD Host Controller

IRQ 15	Intel(R) Celeron(R)/Pentium(R)Processor PCI Express Root Port – 5AD7
	Intel(R) Celeron(R)/Pentium(R)Processor PCI Express Root Port – 5AD9
	Intel(R) HD Graphics
	Video Controller (VGA Compatible)
IRQ 17	Intel® USB 3.0 eXtensible Host Controller - 1.0(Microsoft)
IRQ 25	High Definition Audio Controller
IRQ 39	Intel SD Host Controller
IRQ 54~511	Microsoft ACPI-Compliant System
IRQ 1024	Intel SD Host Controller
IRQ FFFFFFFEF (-17)	Intel® USB 3.0 eXtensible Host Controller - 1.0(Microsoft)
IRQ FFFFFFFF0~FFFFFFF5(-16~11)	Intel(R) I210 Gigabit Network Connection
IRQ FFFFFFFF6 (-10)	Intel(R) Trusted Execution Engine Interface
IRQ FFFFFFFF7 (-9)	Intel(R) HD Graphics
IRQ FFFFFFFF8 (-8)	Standard SATA AHCI Controller
IRQ FFFFFFFF9 (-7)	Intel(R) Celeron(R)/Pentium(R)Processor PCI Express Root Port – 5AD7
IRQ FFFFFFFFA (-6)	Intel(R) Celeron(R)/Pentium(R)Processor PCI Express Root Port – 5AD6
IRQ FFFFFFFFB (-5)	Intel(R) Celeron(R)/Pentium(R)Processor PCI Express Root Port – 5ADB
IRQ FFFFFFFFC (-4)	Intel(R) Celeron(R)/Pentium(R)Processor PCI Express Root Port – 5ADA
IRQ FFFFFFFFD (-3)	Intel(R) Celeron(R)/Pentium(R)Processor PCI Express Root Port – 5AD9
IRQ FFFFFFFFE (-2)	Intel(R) Celeron(R)/Pentium(R)Processor PCI Express Root Port – 5AD8

D.3 1st MB Memory Map

Table D.3: 1st MB Memory Map

Addr. Range (Hex)	Device
0xA0000-0xBFFFF	PCI Express Root Complex
0xC0000-0xDFFFF	PCI Express Root Complex
0xE0000-0xFFFFF	PCI Express Root Complex
0x7B800001-0x7BFFFFFFF	PCI Express Root Complex
0x7C000001-0x7FFFFFFF	PCI Express Root Complex
0x80000000-0x80FFFFFFF	Intel(R) HD Graphics
Video Controller(VGA Compatible)	
0x80000000-0xCFFFFFFF	PCI Express Root Complex

Table D.3: 1st MB Memory Map

0x81000000-0x810FFFFF	High Definition Audio Controller
0x81100000-0x813FFFFF	Intel(R) Celeron(R)/Pentium(R)Processor PCI Express Root Port – 5AD7
0x81200000-0x812FFFFF	Intel(R) I210 Gigabit Network Connection
0x81300000-0x81303FFF	Intel(R) I210 Gigabit Network Connection
0x81400000-0x8140FFFF	Intel® USB 3.0 eXtensible Host Controller - 1.0(Microsoft)
0x81400000-0x8144FFFF	Intel(R) Celeron(R)/Pentium(R)Processor PCI Express Root Port – 5AD8
0x81410000-0x81413FFF	High Definition Audio Controller
0x81414000-0x81415FFF	Standard SATA AHCI Controller
0x81416000-0x814160FF	Intel(R) Celeron(R)/Pentium(R) Processor SMBUS – 5AD4
0x81417000-0x81417FFF	Intel SD Host Controller
0x81418000-0x81418FFF	Intel SD Host Controller
0x81419000-0x814197FF	Standard SATA AHCI Controller
0x8141A000-0x8141A0FF	Standard SATA AHCI Controller
0x8141D000-0x8141DFFF	Intel(R) Trusted Execution Engine Interface
0x81500000-0x8150FFFF	Intel® USB 3.0 eXtensible Host Controller - 1.0(Microsoft)
0x81510000-0x81513FFF	High Definition Audio Controller
0x81514000-0x81515FFF	Standard SATA AHCI Controller
0x81516000-0x815160FF	Intel(R) Celeron(R)/Pentium(R) Processor SMBUS – 5AD4
0x81517000-0x81517FFF	Intel SD Host Controller
0x81518000-0x81518FFF	Intel SD Host Controller
0x81519000-0x815197FF	Standard SATA AHCI Controller
0x8151A000-0x8151A0FF	Standard SATA AHCI Controller
0x8151D000-0x8151DFFF	Intel(R) Trusted Execution Engine Interface
0x90000000-0x90FFFFFF	Video Controller(VGA Compatible)
0x90000000-0x9FFFFFFF	Intel(R) HD Graphics
0x91100000-0x913FFFFF	Intel(R) Celeron(R)/Pentium(R) Processor SMBUS – 5AD7

Table D.3: 1st MB Memory Map

0x91200000-0x912FFFFF	Intel(R) I210 Gigabit Network Connection
0x91300000-0x91303FFF	Intel(R) I210 Gigabit Network Connection
0x91516000-0x915160FF	Intel(R) Celeron(R)/Pentium(R) Processor SMBUS – 5AD4
0x9151D000-0x9151DFFF	Intel(R) Trusted Execution Engine Interface
0xD0C00000-0xD0C00653	Intel(R) Serial GPIO Host Controller- INT3452
0xE0000000-0xEFFFFFFF	Motherboard resources
0xE0000000-0xEFFFFFFF	PCI Express Root Complex
0xFE000000-0xFE000000-0xFE000000-0xFE000000	Motherboard resources
0xFED00000-0xFED003FF	High precision even timer
0xFED01000-0xFED01FFF	Motherboard resources
0xFED03000-0xFED03FFF	Motherboard resources
0xFED06000-0xFED06FFF	Motherboard resources
0xFED08000-0xFED09FFF	Motherboard resources
0xFED1C000-0xFED1CFFF	Motherboard resources
0xFED40000-0xFED4087F	Trusted Platform Module 2.0
0xFED80000-0xFEDBFFFF	Motherboard resources
0xFEE00000-0xFEE00000-0xFEE00000-0xFEE00000	Motherboard resources



Enabling an Intelligent Planet

www.advantech.com

Please verify specifications before quoting. This guide is intended for reference purposes only.

All product specifications are subject to change without notice.

No part of this publication may be reproduced in any form or by any means, electronic, photocopying, recording or otherwise, without prior written permission of the publisher.

All brand and product names are trademarks or registered trademarks of their respective companies.

© Advantech Co., Ltd. 2017