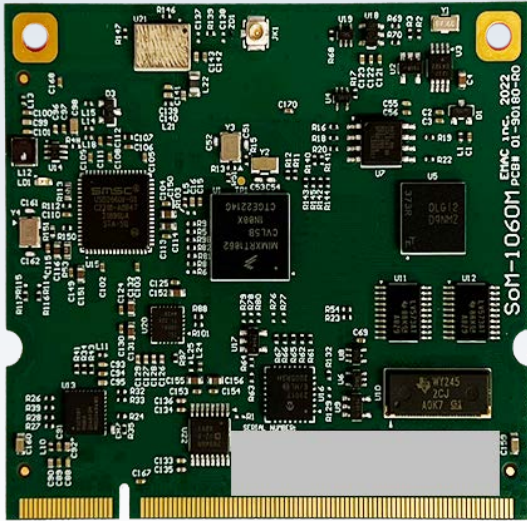


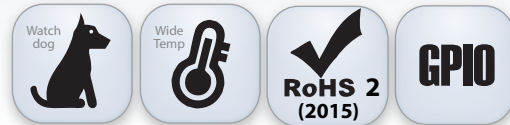
SoM-RT1062

Embedded ARM M7 SoM (MIMXRT1062)



Features

- RT1062 ARM Cortex M7 600 MHz Processor
- Up to 32M of Flash & 17M of RAM
- 8-bit LCD Video with Resistive Touch Controller
- 2x 100-BaseT Ethernet Ports (one with PHY, one without)
- 2x USB 2.0 Host / 1 USB 2.0 OTG
- 1x Wifi/Bluetooth Radio
- 1x SDIO Port

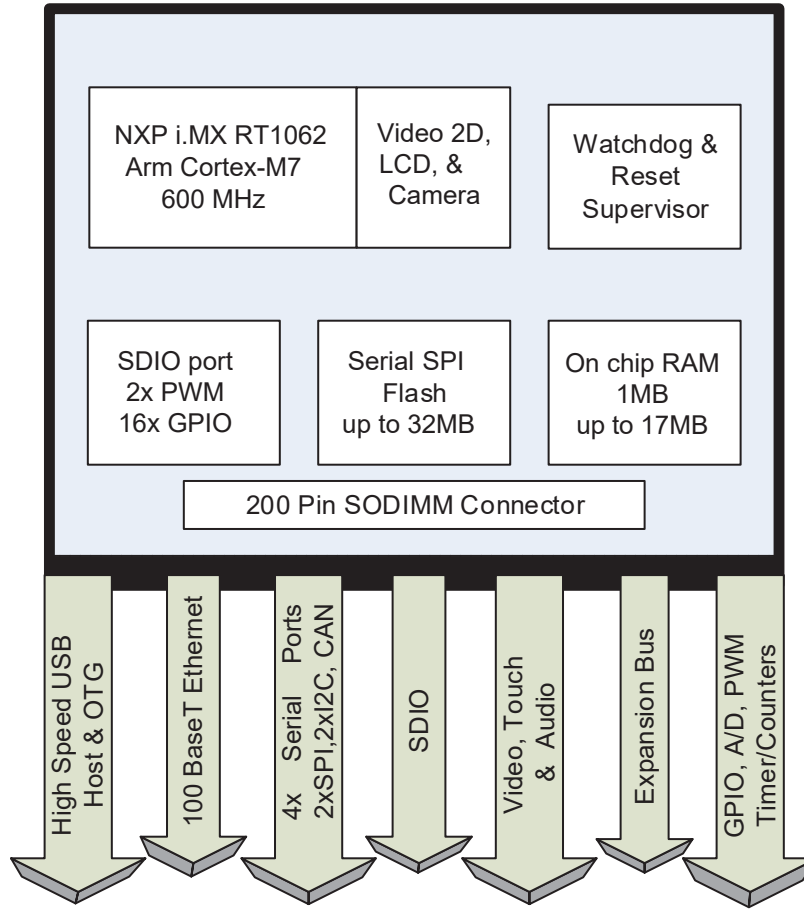


Specifications

Processor	NXP iMX ARM Cortex M7 600MHz (MIMXRT1062DVL6B) 600Mhz / 528Mhz (Depending on Model)
Memory	Up to 16 MB of External RAM 1M of On-Processor RAM Up to 32MB of Serial Data Flash
I/O	16x GPIOs 1x SDIO Flash Card Port 1x I2S Audio Port 1x CAN Port 2x 100BaseT Ethernets (1x On-SOM PHY) 2x USB 2.0 Host Port (1x on Bare-Bones) 1x USB 2.0 OTG Port 4x Serial Ports 2x SPI 2x Programmable Timer Output Ports (OSC0 & OSC1) 2x I2C Ports
Analog	4x A/D Channels (12-Bit)
Video	LCD Display Interface (up to WXGA : 1366 x 768) with Touch 18-bit LCD Controller
Bus Expansion	Local ARM Bus
OS	FreeRTOS, Zephyr or MicroPython
Dimensions	Small 200 pin SODIMM form factor 2.66" x 2.375" (67mm x 60mm)
Power Req.	3.3Vdc Typical Running Current Consumption 175mA
Environment	0° to + 85° C Standard / -30° to + 70° C Wide / -40° to + 85° C Industrial Operating Temperature Ranges 90% Upper Operating Humidity



Block Diagram



Ordering Information

Product #	CPU	Memory	Serial	GPIO	USB	Video	LAN	Temperature
SoM-1062M-300R0	NXP iMX ARM Cortex M7 528MHz	17MB RAM 32MB Serial Flash	4x	16x	2x HS Host 1x HS OTG	18-bit 4-wire LCD with Resistive Touch	2x 10/100 BaseT MAC 1x PHY	-40° to +85° C
SoM-1062M-201R0	NXP iMX ARM Cortex M7 528MHz	17MB RAM 32MB Serial Flash	4x	16x	2x HS Host 1x HS OTG	18-bit 4-wire LCD with Resistive Touch	2x 10/100 BaseT MAC 1x PHY	-30° to +70° C
SoM-1062M-107R0	NXP iMX ARM Cortex M7 600MHz	1MB RAM 128KB MCU Flash	4x	16x	1x HS Host 1x HS OTG	18-bit 4-wire LCD with Resistive Touch	2x 10/100 BaseT MAC 1x PHY	0° to +85° C

Optional Accessories

PRODUCT #	DESCRIPTION
SOM-212ES-000	Standard Carrier Board with Touch LCD
PER-PWR-00032	5V @ 2.5A PS (110V @ 60Hz US)
CAB-85-001-1	CAN Cable (CBL COM 10P/DB9-F 6")

