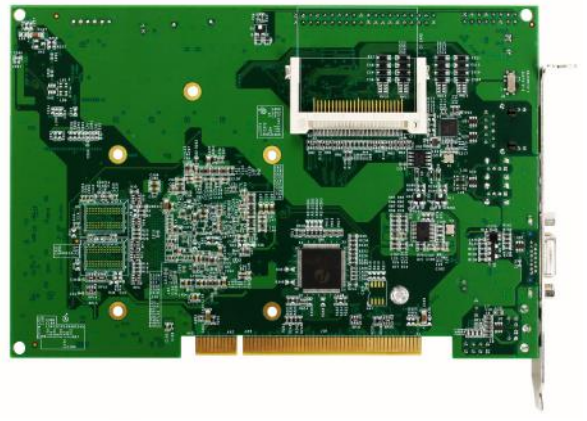


VDX3-PCI



Specifications

CPU	DM&P SoC Vortex86DX3 1GHz L1: 32K I-Cache, 32K D-Cache, L2 Cache: 512KB			
RAM	1/2GB DDR3 Onboard			
BIOS	AMI BIOS			
Bus	PCI			
Display	Integrated 2D VGA chip with Dual Display Support (VGA + LVDS) VGA: Maximum resolution up to 1920 x 1080 @ 60Hz LVDS: Maximum resolution up to 1024 x 768 @ 60Hz, single channel 24-bit LVDS			
LAN	RTL8111F GbE x1			
Disk Support	SATA DOM	IDE DOM	Copmact Flash	
I/O Interface	USB (ver. 2.0) x2	COM x2		
Connectors	2.54mm 40-pin box header for IDE DoM x1 1.25mm 30-pin wafer for LCD Panel x1 PS/2 Connector x1 USB Connector x2	2.54mm 16-pin pin header for Front Panel x1 2-pin box header for DC Output x1 D-Sub 15-pin female Connector for VGA x1 RJ45 Connector x1	2,54mm 10-pin box header for COM x2 7-pin SATA Connector for SATA DoM x1 Power Terminal Block x1 Type I/II Compact Flash Slot x1	
Power Requirement	DC +5V @ 1100mA			
Operating Temperature	-20°C to +70°C (Single Core) -40°C to +85°C (Optional for Single Core)	-10°C to +60°C (Dual Core) -20°C to +70°C (Optional for Dual Core)		
Dimension	185 x 121 mm			
Weight	150g			
O/S Support	Windows 7 Windows XP Professional POS Ready (WePOS)	Windows Embedded Standard 7 Windows Embedded 2009 QNX	Windows Embedded Compact 7 Linux VxWorks	Windows Embedded CE6.0 DOS Free BSD

Ordering Information

PART NO.	CPU	DRAM (DDR3)	Storage	Display	GLAN	USB (ver. 2.0)	COM
VDX3-PCI-7S4E	1GHz (Single Core)	1GB	SATA, IDE DoM Compact Flash	VGA LVDS	1	2	2
VDX3-PCI-7S5E	1GHz (Single Core)	2GB	SATA, IDE DoM Compact Flash	VGA LVDS	1	2	2
VDX3-PCI-7D4E	1GHz (Dual Core)	1GB	SATA, IDE DoM Compact Flash	VGA LVDS	1	2	2
VDX3-PCI-7D5E	1GHz (Dual Core)	2GB	SATA, IDE DoM Compact Flash	VGA LVDS	1	2	2