

Our Products Make Your Product Better®

To learn more about EMAC's products and services and how they can help your project

http://ftp.emacinc.com/Tech_Info/About_EMAC_Products_and_Services.pdf



Authorized Distributor, Integrator, and Value-Added Reseller

Manual downloaded from <ftp.emacinc.com>

For purchase information please contact info@emacinc.com

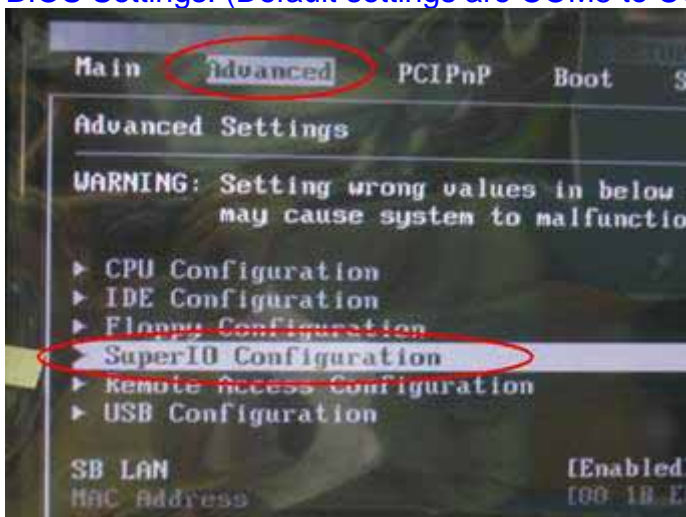
For technical support please submit a ticket at www.emacinc.com/support

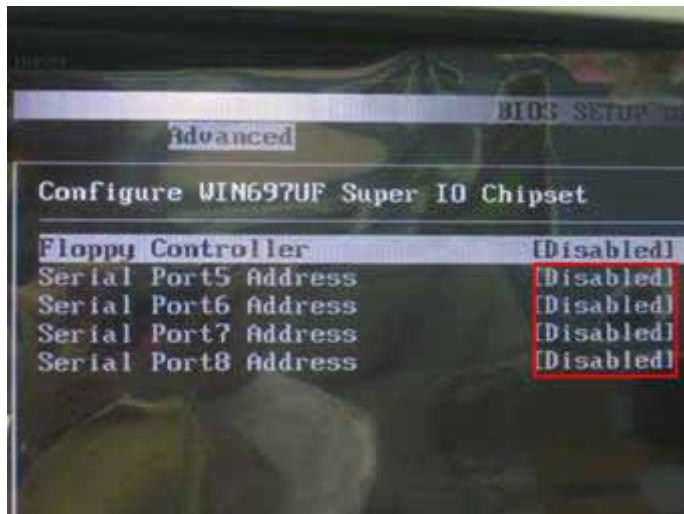
Three methods for serial port configuration on the VDX-6327,

Method 1: Shared IRQ (works in operating systems that support IRQ sharing)

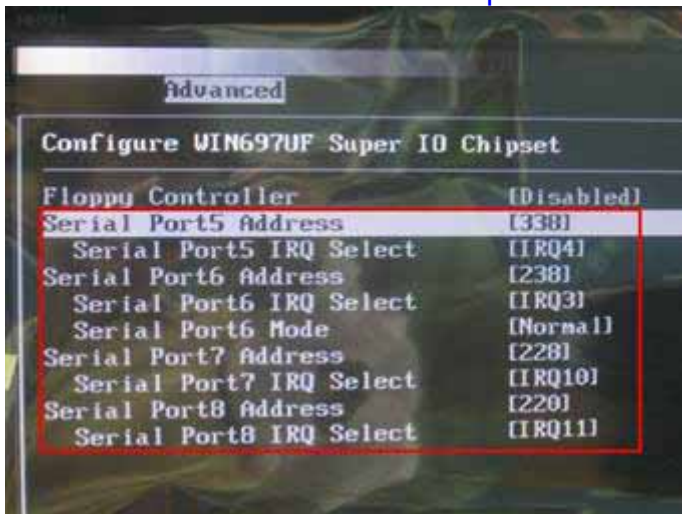
IRQ Mapping		
IRQ#	Description	Usage
IRQ0	System Timer	*
IRQ1	Keyboard Controller	*
IRQ2	Cascade for IRQ8 - 15	
IRQ3	Serial Port 2 / Serial Port 6	*
IRQ4	Serial Port 1 / Serial Port 5	*
IRQ5	USB	*
IRQ6	Floppy	*
IRQ7	Parallel Port	*
IRQ8	Real Time Clock	*
IRQ9	USB / Ethernet 10/100M LAN	*
IRQ10	Serial Port 3 / Serial Port 7	*
IRQ11	Serial Port 4 / Serial Port 8	*
IRQ12	Mouse	*
IRQ13	Math Coprocessor	*
IRQ14	Hard Disk Controller#1	*
IRQ15	USB	*

BIOS Settings: (Default settings are COM5 to COM8 disabled.)

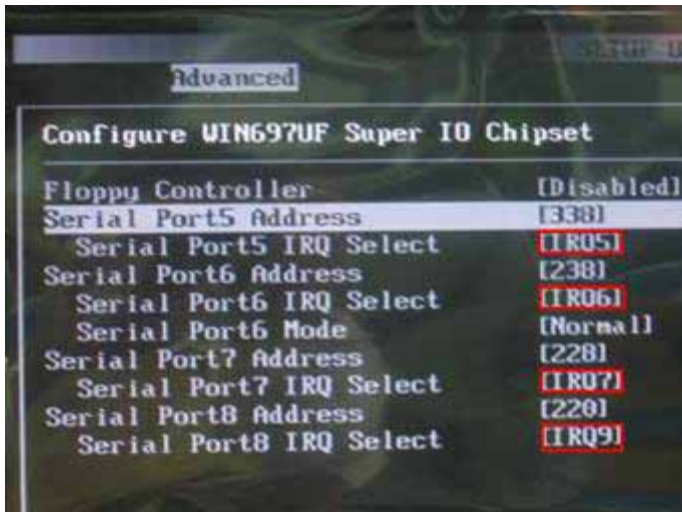




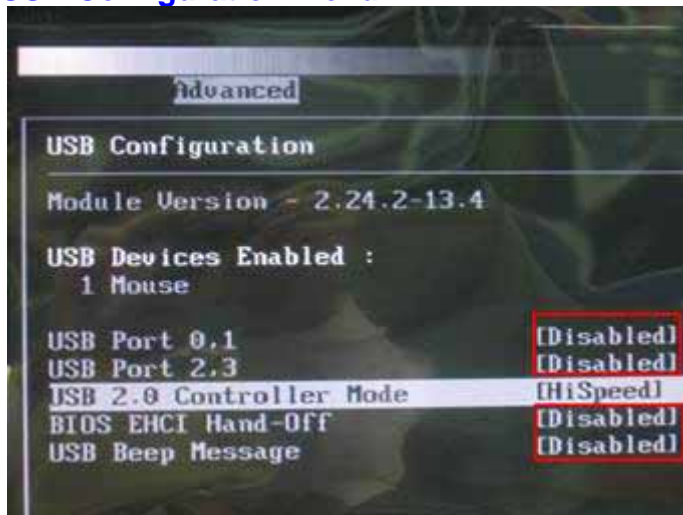
Enable COM5 to COM8 and then press "F10" to save the BIOS settings.



Method 2: Disable USB and Parallel , Release IRQ to COM5~8. (Works in operating systems that do not support IRQ)
(Suggested configuration for maximum speed for each serial port, Works in all operating systems, MSDOS, Linux and Windows)

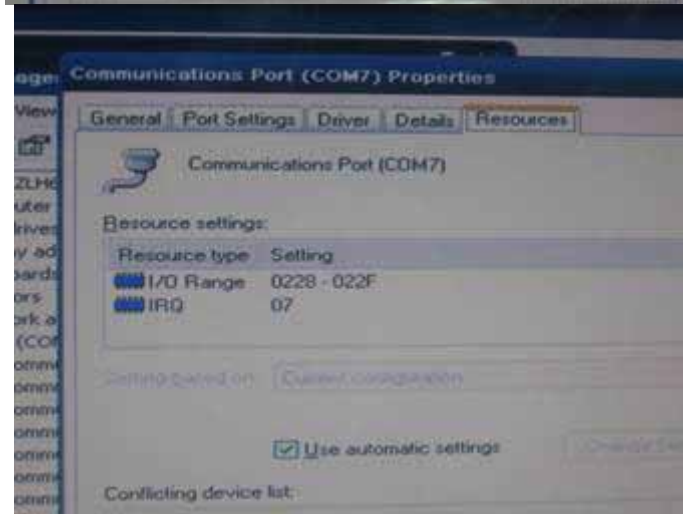
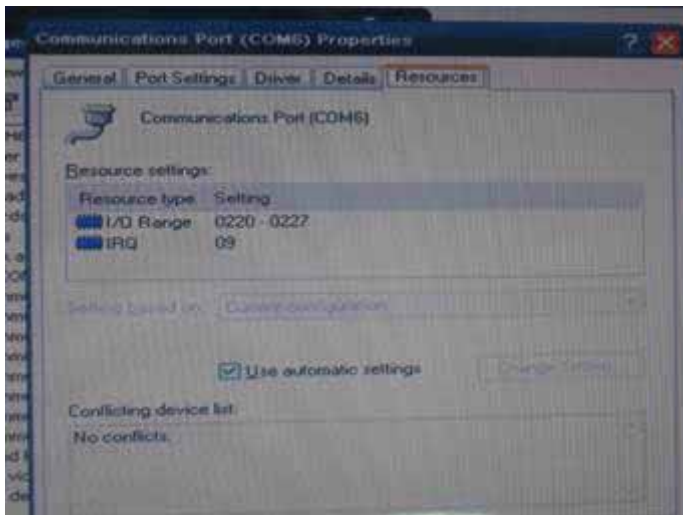
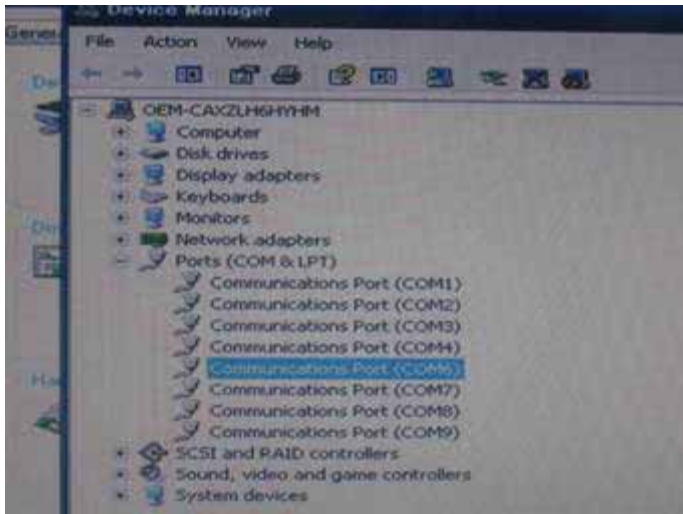


USB Configuration menu-



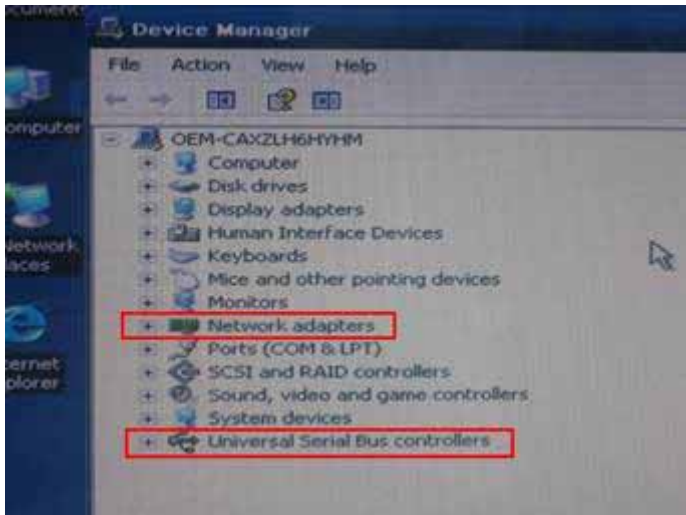
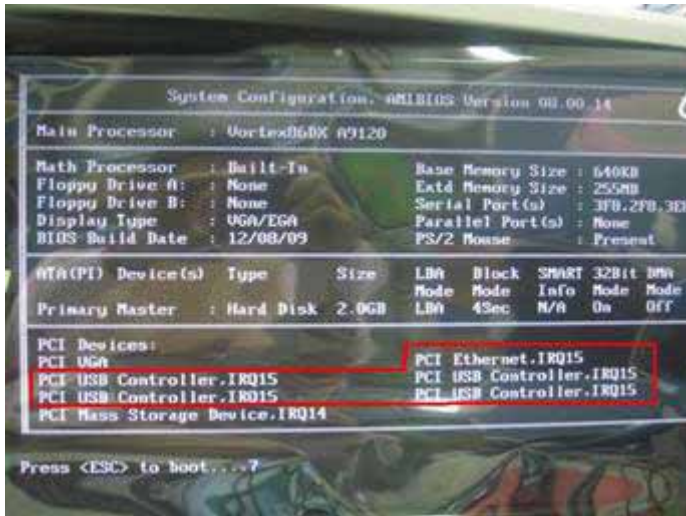
Chipset Section -> Serial/Parallel port Configuration







Method 3: when **USB** is needed, enable 4 **USB Ports**, but 4 **USB Ports** and **Onboard Ethernet** will share **IRQ15** ,
(works in operating systems that support IRQ sharing)



After configuration check your operating system IRQ and base addresses for each port after adjusting the configuration, the Operating system port numbers may not match what is printed on the PC board.