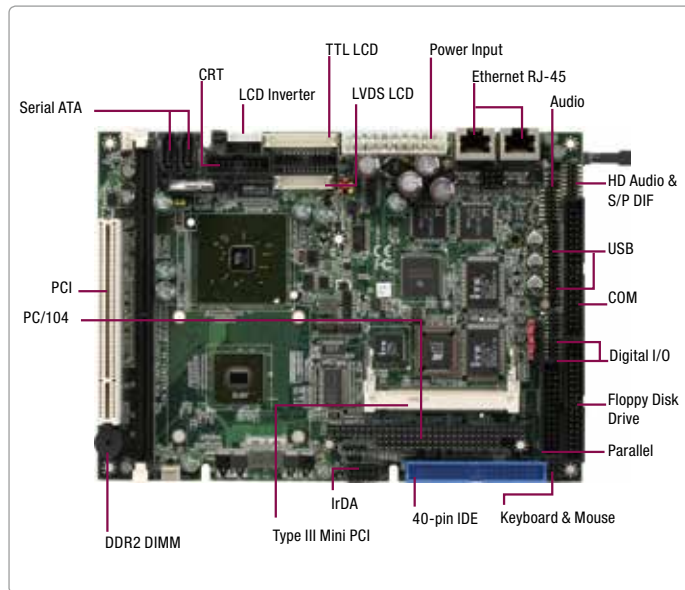


# PCM-8120

Compact Board with VIA C7™/ Eden™ (V4 Bus) Series Processor



## Features

- Onboard VIA C7™/ Eden™ ULV (V4 Bus) Series Processor
- VIA Eden™ (V4 Bus) + CX700M
- DDR2 400/533MHz DIMM X 1, Up To 1 GB
- 10/100Base-TX Ethernet x 2, RJ-45 x 2
- Up to 24-bit Dual-channel LVDS TTL/ LVDS LCD, DVI and CRT
- HD 5.1CH Audio
- Type 2 CompactFlash™ x 1, SATA 3.0Gb/s x 2, EIDE x 1, Floppy Disk Drive x 1
- USB2.0 x 6, COM x 4, 16-bit Digital I/O, Parallel x 1
- PCI x 1, Mini PCI x 1, PC/104 x 1
- AT/ATX

## Specifications

System	
Form Factor	5.25"
Processor	VIA C7™/ Eden™ ULV (V4 Bus) series Processor up to 1.5GHz with FSB 533 MHz
System Memory	240-pin DDR2 400/533MHz DIMM x 1, up to 1 GB
Chipset	VIA Eden™ (V4 Bus) + CX700M
I/O Chipset	ITE IT8712 + IT8888G
Ethernet	Realtek RTL 8139DL, 10/100Base-TX, RJ-45 x 2
BIOS	Award 1 MB Flash ROM
Wake On LAN	Yes
Watchdog Timer	Generates a time-out system reset
H/W Status Monitoring	Supports power supply voltages, fan speed, and temperature monitoring
Expansion Interface	Mini PCI x 1, PCI x 1, PC/104 x 1
Battery	Lithium battery
Power Requirement	AT/ ATX
Power Consumption (Typical)	VIA Eden™ 1 GHz, DDR2 533 1 GB 2.69A@+5V
Board Size	8" (L) x 5.75" (W) (203mm x 146mm)
Gross Weight	1.2 lb (0.5 Kg)
Operating Temperature	32°F ~ 140°F (0°C ~ 60°C)
Storage Temperature	-40°F~176°F (-40°C~80°C)
Operating Humidity	0% ~ 90% relative humidity, non-condensing
MTBF (Hours)	50,000
Display	
Chipset	VIA CX700M integrated
Memory	Shared system memory up to 128 MB
Resolutions	Up to 1600x1200 @ 32bpp for CRT Up to 1600x1200 @ 24bpp for LCD
LCD Interface	Up to 24-bit dual-channel LVDS TFT LCD, up to 24-bit TTL TFT LCD
DVI	Yes
I/O	
Storage	EIDE x 1 (UDMA 100 for one device), SATA 3.0Gb/s x 2, Type 2 CompactFlash™ x 1, Floppy Disk Drive x 1
Serial Port	RS-232 x 3, RS-232/422/485 x 1
Parallel Port	SPP/ EPP/ ECP mode
USB	USB2.0 x 6
PS/2 Port	Keyboard x 1, Mouse x 1
Digital I/O	Supports 16-bit (Programmable)
IrDA	One IrDA Tx/Rx header
Audio	Mic-in, Line-in, Line-out, CD-in, S/PDIF in/out, 5.1CH



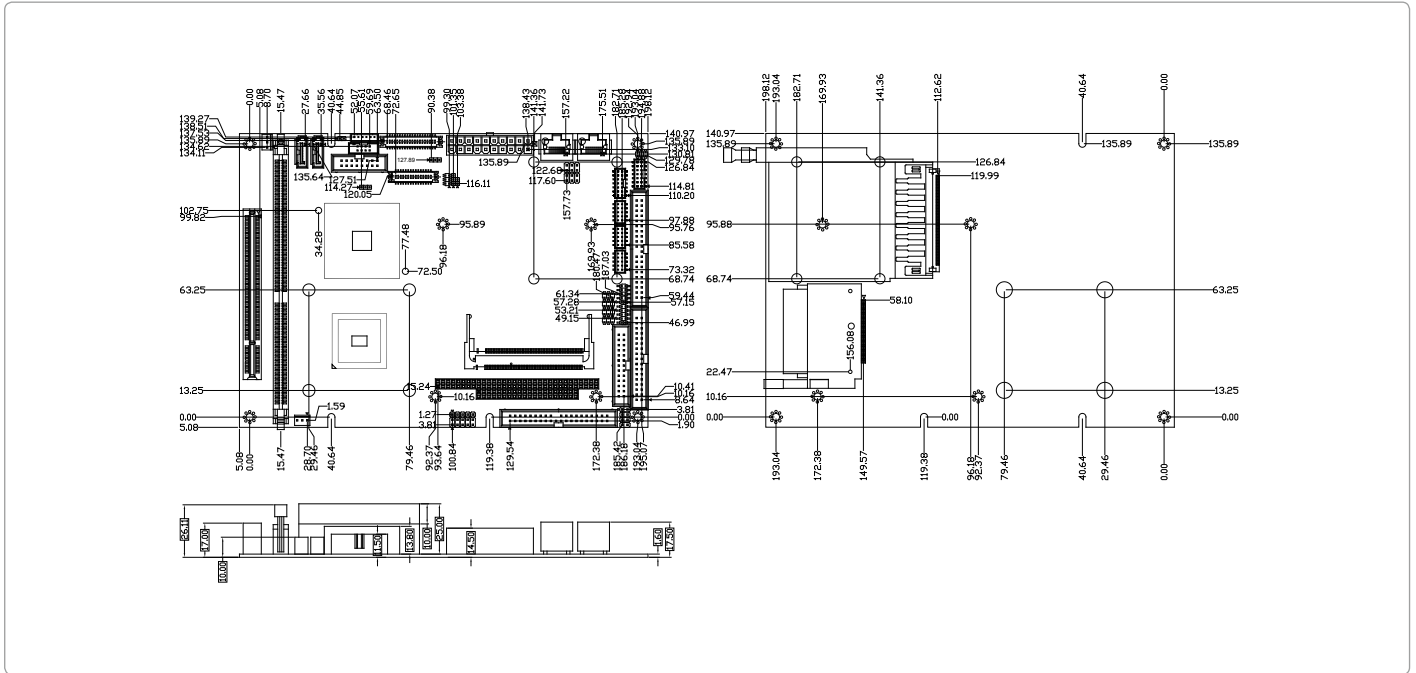
## Packing List

- 965766600  
Jumper Cap
- Product CD
- PCM-8120

# PCM-8120

## Dimension

Unit: mm



## Ordering Information

Part Number	CPU	Fan/ Fanless	Display	LVDS	Storage	LAN	USB	RS-232	RS-232/422/485	Expansion Slot	Power	Temp
TF-PCM-8120-A10-04	VIA Eden™ 1G ULV	Fanless	CRT + LVDS CRT + TTL	24b, 2CH	SATA x 2 IDE x 1 CompactFlash™ x 1	FE x 2	6	3	1	Mini PCI x 1 PCI x 1 PC/104 x 1	ATX	0°C ~ 60°C
TF-PCM-8120-A10-07	VIA C7 1.5G	Fanless	CRT + LVDS CRT + TTL	24b, 2CH	SATA x 2 IDE x 1 CompactFlash™ x 1	FE x 2	6	3	1	Mini PCI x 1 PCI x 1 PC/104 x 1	ATX	0°C ~ 60°C

## Optional Accessories

- **TF-PER-A031**  
Cable Kit for PCM-8120
- **1700300240**  
DVI Cable
- **TF-PER-C10L-A10**  
Mini PCI 10/100Base-TX Ethernet Module with Realtek 8100C
- **TF-PER-C10L-A10-01**  
Mini PCI 10/100/1000Base-TX Ethernet Module with Realtek 8110S
- **TF-PER-C10L-A10-03**  
Mini PCI 10/100/1000Base-TX Ethernet Module with Intel® 82541GI
- **TF-PER-C40C-B10**  
Mini PCI 2-port RS-232 Module Rev. B1.0
- **TF-PER-C40C-B10-01**  
Mini PCI 4-port RS-232 Module Rev. B1.0