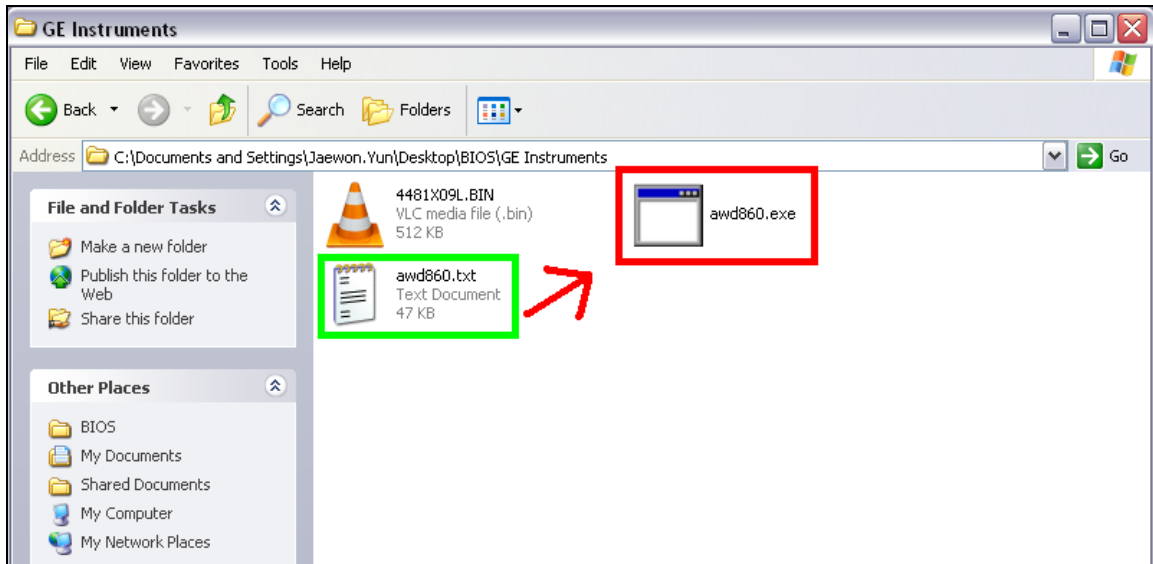


How to Flash the BIOS

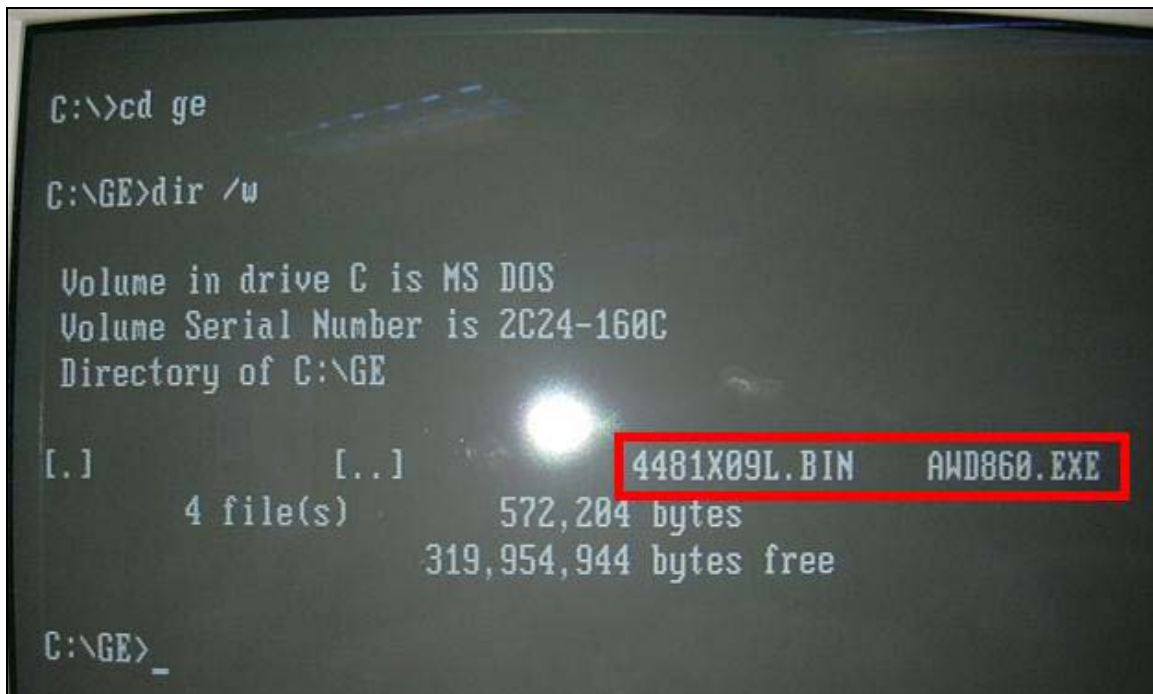
SOP V 1.0

1) Please extract the bin file and “awd860.txt” to a DOS bootable storage medium such as a compact flash card. Please rename “awd860.txt” to “awd860.exe”.

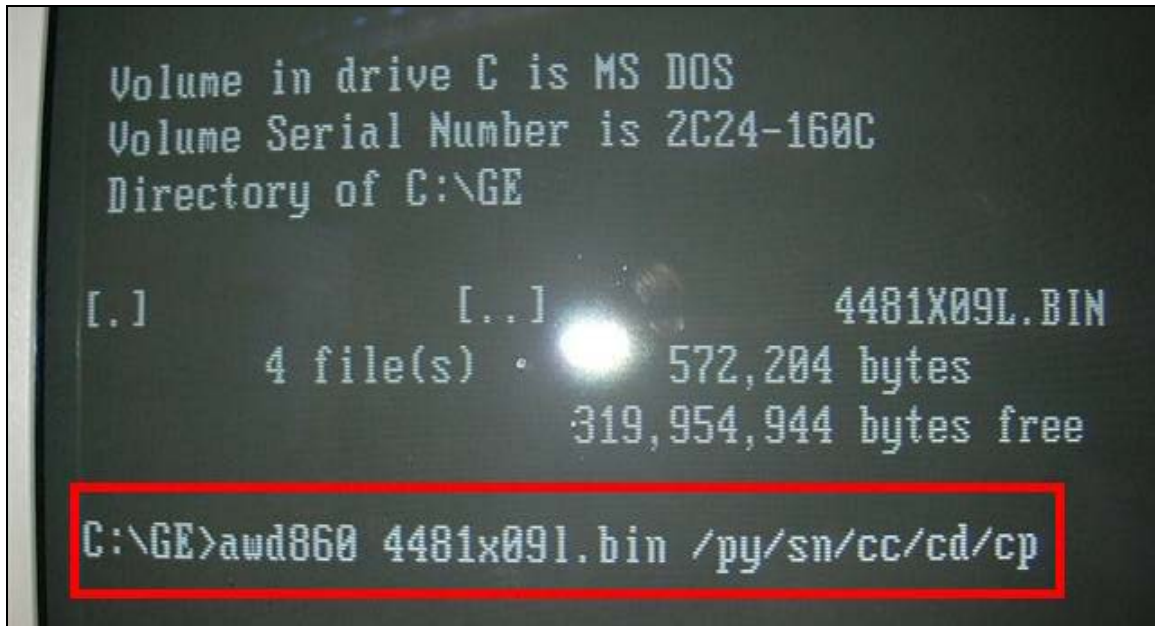


2) Please insert the storage medium into the board, and power on the system. If booting from **USB flash drive**, please enter BIOS and set the first boot device under the “Advanced CMOS Features -> First Boot Device -> USB-HDD”.

3) Once the board boots into DOS, please verify that the two required files (awd860.exe and the .bin) are in the same folder.



4) Execute the following command string: “awd860 (file name).bin /py/sn/cc/cd/cp”, please see below.

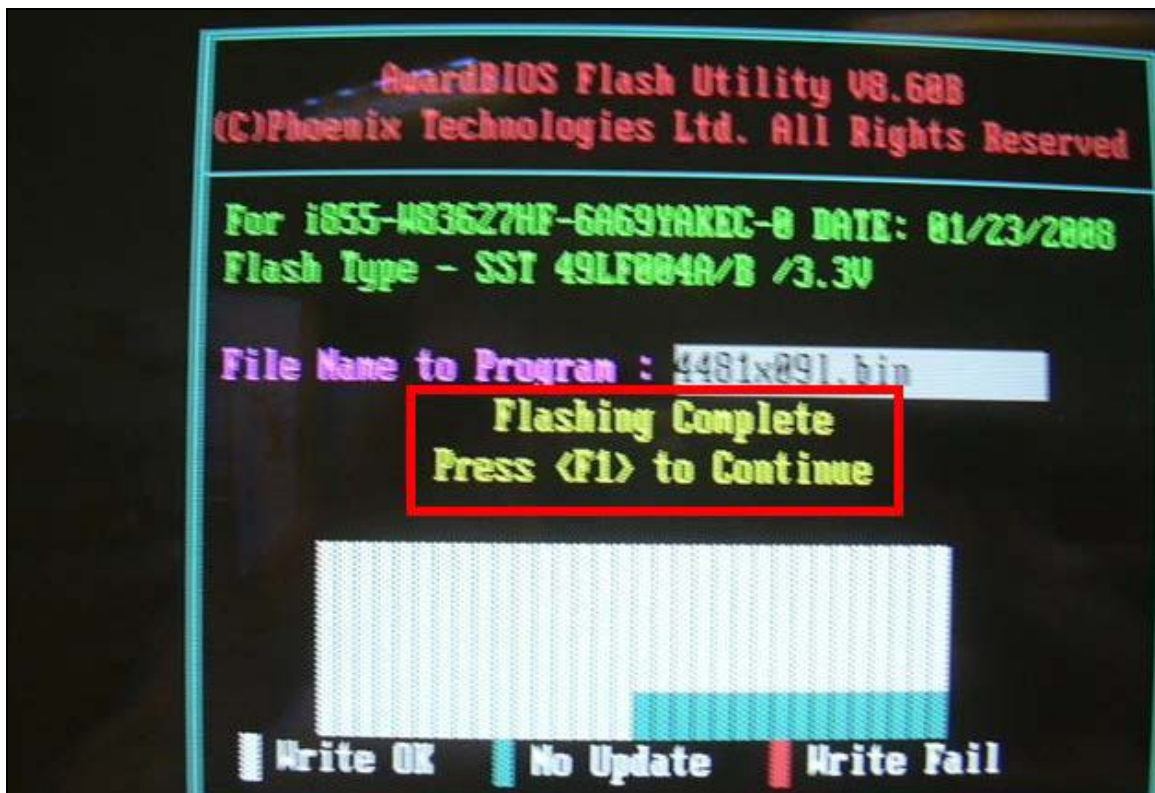


```
Volume in drive C is MS DOS
Volume Serial Number is 2C24-160C
Directory of C:\GE

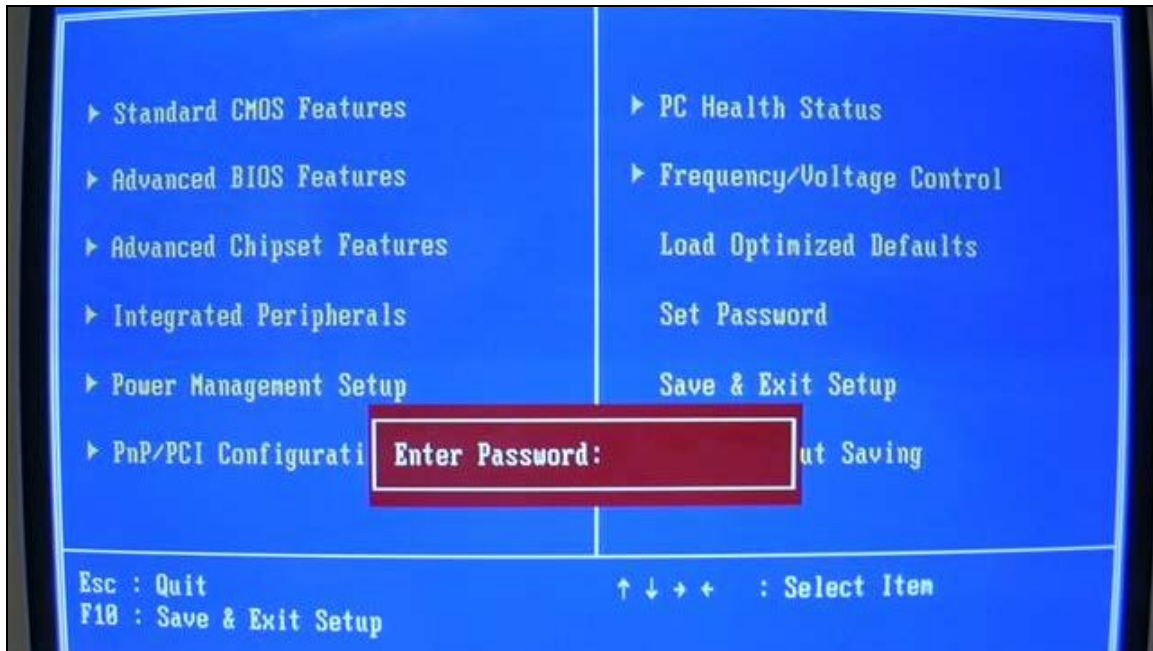
[.]                [...]                4481X09L.BIN
      4 file(s)      •      572,204 bytes
                        319,954,944 bytes free

C:\GE>awd860 4481x09l.bin /py/sn/cc/cd/cp
```

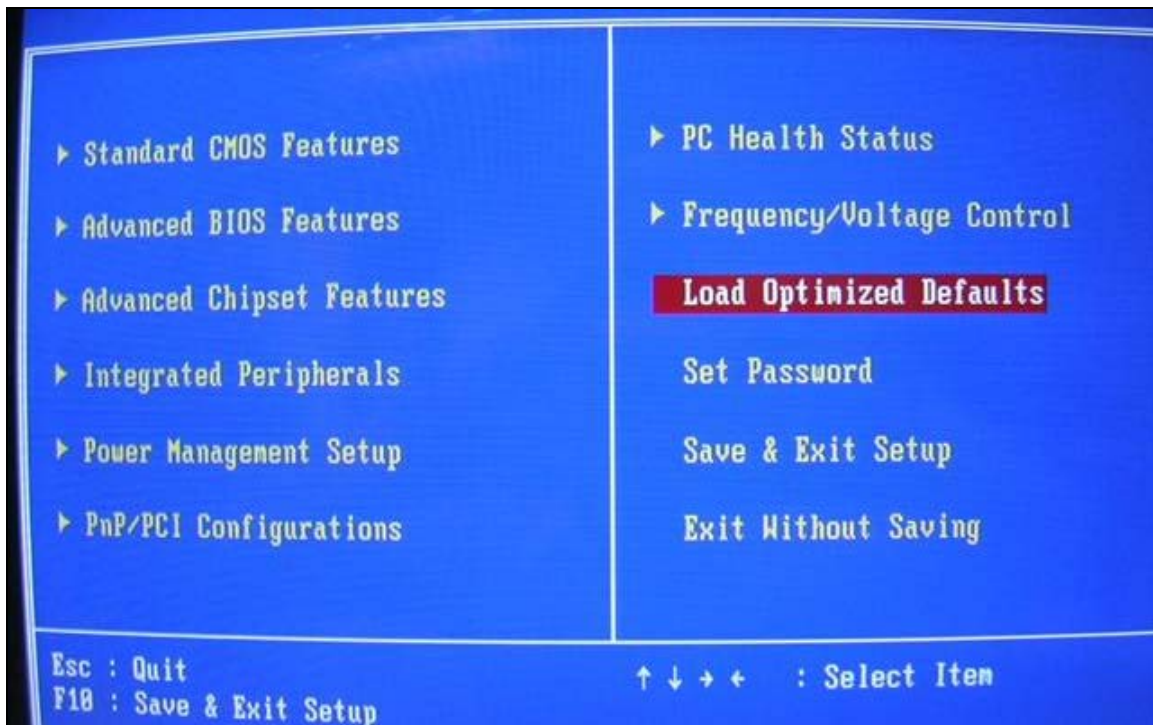
5) The flash utility will begin flashing the BIOS, the utility will prompt the user to press “F1” once the process is complete. Please press F1 to restart the system.



6) Once the system reboots, press the “DEL” key repeatedly to enter CMOS setup. **If** the system prompts for a password, please enter it.



7) Please select “Load Optimized Defaults”.



8) Please select “Save & Exit Setup”, and the system will reboot with the new BIOS settings.

