

Features

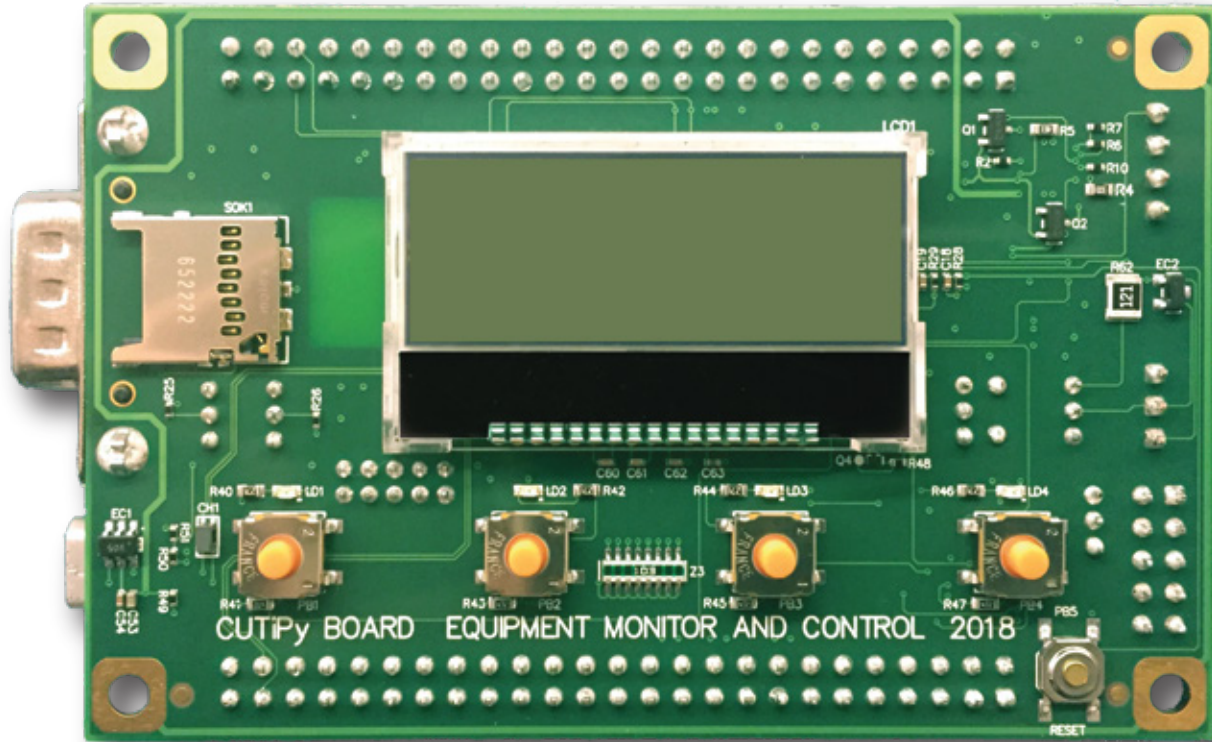
- STM32F407IGH6 ARM Cortex-M4
- 168MHz w/Math Coprocessor
- 192KB of SRAM, Up to 1MB of Flash
- RTC with battery backup & Temperature Sensor
- 16x External Dedicated GPIOs (64x fully allocated)
- 4x Serial Ports, USB, SDIO, A/D, SPI, I2C & CAN
- Zigbee, Thread, BLE & Wi-Fi (Optional)
- MicroPython & FreeRTOS



Specifications

Processor	STM32F407IGH6 ARM Cortex-M4 w/Math Coprocessor 168 MHz
Memory	192 KB of SRAM Up to 1MB of Flash
I/O	16x External Dedicated GPIOs (64x fully allocated) 1x microSD Card Slot 1x CAN 2.0B Port (Internal Shared w/Transceiver, External Shared w/o Transceiver) 2x USB 2.0 Full Speed OTG Ports (1x Internal, 1x External) 4x Serial Ports (1x RS232 Internal, 1x RS232/485 Internal, 2x TTL Shared) 2x SPI Ports (1x Internal, 1x External) 3x I2C hardware Ports (1x Internal, 2x External) 24x Timer/Counters/PWM/Capture RTC with on-board battery backup & Temperature Sensor 1x Reset Button and 2x Dual Color Status LEDs Graphic 132x32 LCD with 4x pushbuttons & 4x LEDs (Optional)
Analog	13x A/D Channels with 12-bit Resolution (3 Unique A/Ds) 2x D/A Channels with 12-bit Resolution
Wireless	802.11 a/b/n Wi-Fi (Optional) Bluetooth Low Energy (BLE) (Optional) 802.14.4 ZigBee (Optional) 802.14.4 Thread (Optional)
Expansion	2x 50 pin Female Expansion Connectors
Software	MicroPython (FreeRTOS optional)
Dimensions	2.25" x 3.5"
Power Req.	5Vdc 49.5mA with 3.7 volts supplied through the battery terminal
Environment	-40° to +85° C Industrial Temperature - Power Recharging 90% Operating Humidity non-condensing





Ordering Information

PRODUCT #	CPU	MEMORY	SERIAL	GPIO	USB	ANALOG	WIRELESS	TEMPERATURE
IOT-F407C-001	STM32F407IGH6 ARM Cortex-M4 168 MHz	192 KB SRAM, 1MB Flash	4x, 1x RS232 1x RS485 2x TTL	16x, 8x Hi- Drive	2x OTG Full Speed	13x Channels 12-bit A/D 2x Channels 12-bit D/A	Wi-Fi, BLE, LCD	-40° to 85° C

Included Accessories

PRODUCT #	Accessories
CAB-35-001	DB9 Null-Modem serial cable
PER-PWR-0101PR	Battery LI-ION Rechargeable 3.7V 1.2AH
CAB-40-015	USB micro to USBa debug and programming cable
CAB-35-001	DB9 to 10 pin ldc second serial port cable

