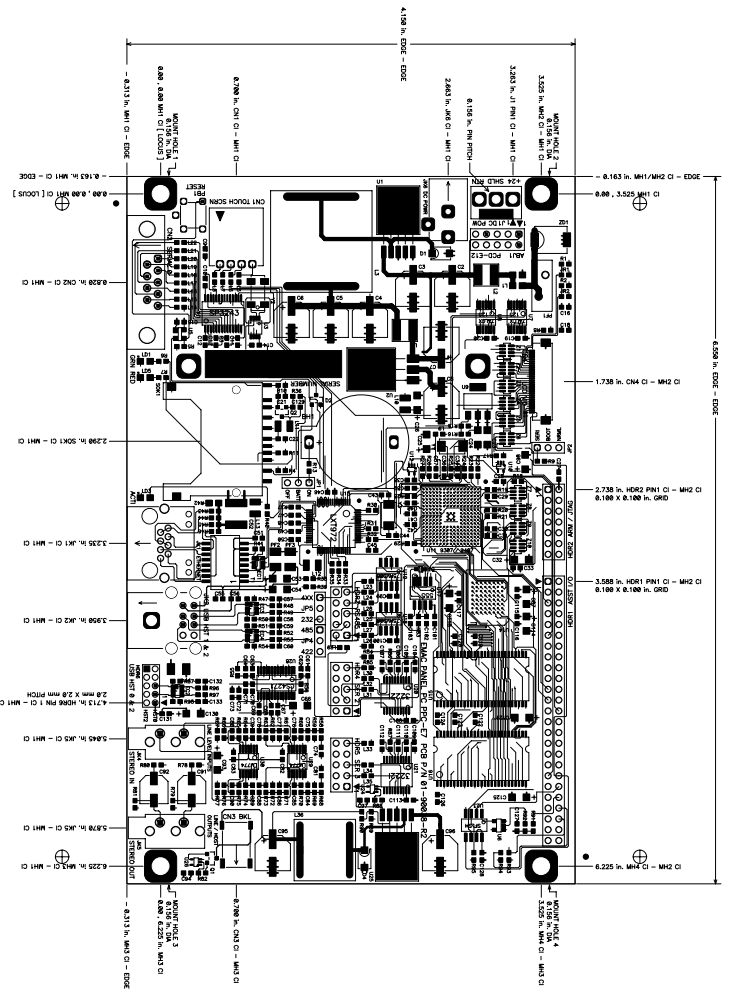


Hole Dia (inch)	Symbol	Quantity	Plated
0.008	+	402	Yes
0.010	X	156	Yes
0.016	Y	18	Yes
0.036	T	2	Yes
0.054	X	14	Yes
0.062	M	3	Yes
0.073	◇	10	Yes
0.096	□	4	Yes
0.126	◇	4	Yes
0.156	◇	4	Yes



- DEPENDENT NOTES:
- 1) DIMENSIONS GIVEN IN INCH UNITS, ROUNDED TO NEAREST 0.001 IN.
 - 2) DIMENSIONS REFERENCED TO MOUNTING HOLE PATTERN UNLESS SPECIFIED OTHERWISE. DIMENSIONS REFERENCED TO MOUNTING HOLE PATTERN UNLESS SPECIFIED OTHERWISE.
 - 3) MOUNTING HOLE PATTERN IS LOCATED TO THE LOWER LEFT CORNER OF ILLUSTRATION.
 - 4) DIMENSIONS REFERENCED TO MOUNTING HOLE PATTERN UNLESS SPECIFIED OTHERWISE.
 - 5) AS ILLUSTRATION IS DRAWN, FOR CLARITY SOME DIMENSIONS NOT DIRECTLY POINTED, THE TABLE BELOW GIVES THE DIMENSIONS USING DIMENSIONS RELATIVE TO THE MOUNTING HOLES:
- X - RIGHT Y - UP
- | | |
|--------------|-----------------------|
| HOLE PILE 1 | 3.208 in. - 3.208 in. |
| HOLE PILE 2 | 3.008 in. - 3.008 in. |
| HOLE PILE 3 | 2.808 in. - 2.808 in. |
| HOLE PILE 4 | 2.608 in. - 2.608 in. |
| HOLE PILE 5 | 2.408 in. - 2.408 in. |
| HOLE PILE 6 | 2.208 in. - 2.208 in. |
| HOLE PILE 7 | 2.008 in. - 2.008 in. |
| HOLE PILE 8 | 1.808 in. - 1.808 in. |
| HOLE PILE 9 | 1.608 in. - 1.608 in. |
| HOLE PILE 10 | 1.408 in. - 1.408 in. |
| HOLE PILE 11 | 1.208 in. - 1.208 in. |
| HOLE PILE 12 | 1.008 in. - 1.008 in. |
| HOLE PILE 13 | 0.808 in. - 0.808 in. |
| HOLE PILE 14 | 0.608 in. - 0.608 in. |
| HOLE PILE 15 | 0.408 in. - 0.408 in. |
| HOLE PILE 16 | 0.208 in. - 0.208 in. |
| HOLE PILE 17 | 0.008 in. - 0.008 in. |

Title		Rev	
PANEL PC E7 [PPC-E7]		2.00.00	
Size	Number	Date	Drawn by
B	FOR 01-90038-R2	01/20/09-08/21/09	SPINE
Filename: PPC_E7_00.00_09-02-09.pcb			