

PCM-9373

**VIA Eden SBC with CPU, LCD,
LVDS, Ethernet and Audio**

User's Manual

Copyright

This document is copyrighted, © 2003. All rights are reserved. The original manufacturer reserves the right to make improvements to the products described in this manual at any time without notice.

No part of this manual may be reproduced, copied, translated or transmitted in any form or by any means without the prior written permission of the original manufacturer. Information provided in this manual is intended to be accurate and reliable. However, the original manufacturer assumes no responsibility for its use, nor for any infringements upon the rights of third parties that may result from such use.

Acknowledgements

Award is a trademark of Award Software International, Inc.

VIA is a trademark of VIA Technologies, Inc.

IBM, PC/AT, PS/2 and VGA are trademarks of International Business Machines Corporation.

Intel, Pentium, Celeron, and MMX are registered trademarks of Intel Corporation.

Microsoft Windows® is a registered trademark of Microsoft Corp.

RTL is a trademark of Realtek Semi-Conductor Co., Ltd.

ESS is a trademark of ESS Technology, Inc.

UMC is a trademark of United Microelectronics Corporation.

SMI is a trademark of Silicon Motion, Inc.

Creative is a trademark of Creative Technology LTD.

All other product names or trademarks are properties of their respective owners.

For more information on this and other EMAC products, please visit our websites at: **<http://www.emacinc.com>**

For technical support and service, please visit our support website at: **<http://www.emacinc.com/support/>**

This manual is for the PCM-9373.

Part No. 2006937310

1st Edition

Printed in Taiwan

August 2003

Packing List

Before you begin installing your card, please make sure that the following materials have been shipped:

- 1 PCM-9373 all-in-one single board computer
- 1 startup manual
- CD-ROM or disks for utility, drivers, and manual (in PDF format)
- 1 3.5" IDE flat cable 40-pin to 40-pin (part no: 1701440351)
- 1 keyboard/ PS2 mouse cable (part no. 1700060202)
- 1 second serial port cable (part no.1701140201)
- 1 parallel port cable (part no. 1700260250)
- 1 Audio cable (part no. 1703100152)
- 1 USB cable (part no. 1703100121)

If any of these items are missing or damaged, contact your distributor or sales representative immediately.

Model No. List

Description

PCM-9373F-J0A1	W/ Eden-400 CPU and heat sink
PCM-9373F-M0A1	W/ Eden-667 CPU and heat sink
PCM-9373F-S0A1	W/ C3-1GHz CPU and heat sink W/ FAN

Caution! *Possible danger of explosion if batteries (if any) are incorrectly replaced.*



Replace only with the same or equivalent type recommended by the manufacturer.

Achtung! *Dispose of used batteries (if any) according to the manufacturer's instructions.*

Additional Information and Assistance

1. Visit the EMAC, Inc. web site at www.emacinc.com where you can find the latest information about the product.
2. Contact your distributor, sales representative, or EMAC, Inc customer service for technical support if you need additional assistance.

Please have the following information ready before you call:

- Product name, serial number and invoice
- Description of your peripheral attachments
- Description of your software (operating system, version, application software, etc.)
- A complete description of the problem
- The exact wording of any error messages

Contents

Chapter 1	Introduction	2
1.1	Introduction	2
1.1.1	Highly integrated multimedia SBC.....	2
1.2	Features	3
1.3	Specifications	3
1.3.1	Standard 3.5" Biscuit SBC Functions.....	3
1.3.2	VGA/LCD Interface	4
1.3.3	Ethernet Interface.....	4
1.3.4	Audio Function	4
1.3.5	Mechanical and Environmental.....	4
1.4	Board layout: dimensions.....	5
Chapter 2	Installation	8
2.1	Jumpers.....	8
	Table 2.1: Jumpers.....	8
2.2	Connectors.....	8
	Table 2.2: Connectors.....	8
2.3	Locating jumpers.....	10
	Figure 2.1: Jumper locations.....	10
2.4	Locating Connectors	11
	Figure 2.2: Connectors (component side).....	11
	Figure 2.3: Connectors (solder side).....	12
2.5	Setting Jumpers	13
2.6	Clear CMOS (S2).....	14
	Table 2.3: CMOS clear (S2)	14
2.7	Installing DIMMs.....	15
2.8	IDE, CDROM hard drive connector (CN11)	15
2.8.1	Connecting the hard drive.....	15
2.9	Solid State Disk.....	16
2.9.1	CompactFlash (CN22).....	16
2.10	Optional floppy drive connector (CN23).....	16
2.10.1	Connecting the floppy drive	16
2.11	Parallel port connector (CN15)	17
2.12	Keyboard and PS/2 mouse connector (CN18)	17
2.13	Power & HDD LED, Reset Button Connector (CN16, S3)	17
2.13.1	Power & HDD LED (CN16)	17
2.13.2	Reset switch (S3)	18
2.14	Power connectors (CN9, CN7, CN2).....	18
2.14.1	Peripheral power connector, -5 V, -12 V (CN9).....	18
2.14.2	Main power connector, +5 V, +12 V (CN7).....	18

2.14.3	CPU Fan power supply connector (CN2)	18
2.15	ATX power control connector (CN1, CN8)	18
2.15.1	ATX feature connector (CN1) and soft power switch connector (CN8)	18
	Figure 2.4:Wiring for ATX soft power switch function	19
2.16	Audio interfaces (CN14)	19
2.16.1	Audio connector (CN14)	19
2.17	COM port connector (CN20,CN12)	20
2.17.1	COM2 RS-232/422/485 setting (pin 1-6 of JP1)	20
	Table 2.4: JP1: COM2 RS-232/422/485 select	20
2.18	VGA/LCD/LVDS interface connections	20
2.18.1	CRT display connector (CN21)	20
2.18.2	Flat panel display connector (CN4)	20
2.18.3	Extension flat panel connector (CN3)	21
2.18.4	LVDS LCD panel connector (CN6)	21
2.18.5	Panel type selection (S1)	21
	Table 2.5:S3 Panel Type select	21
2.19	TV-out interface (optional) (CN4, CN3)	22
2.20	Ethernet configuration	22
2.20.1	100Base-T connector (CN17)	22
2.20.2	Network boot	22
2.21	Watchdog timer configuration	23
2.21.1	Watchdog timer action (pin 7-10 of JP1)	23
	Table 2.6:JP1 Watchdog timer action	23
2.22	USB connectors (CN19)	23
Chapter 3	Software Configuration	26
3.1	Introduction	26
3.2	Connections to Three Standard LCDs	26
3.2.1	Connections to Toshiba LTM10C209A (640 x 480 TFT color LCD)	26
	Table 3.1:Connections to Toshiba LTM10C209A	26
3.2.2	Connections to Toshiba LTM15C151A (1024 x 768 TFT color LCD)	27
	Table 3.2:Connections to Toshiba	27
3.2.3	Connections to Toshiba LTM12C275A (800 x 600 TFT color LCD)	28
	Table 3.3:Connections to Toshiba LTM12C275A	28
3.3	Ethernet software configuration	29
Chapter 4	Award BIOS Setup	32
4.1	System test and initialization	32
4.1.1	System configuration verification	32
4.2	Award BIOS setup	33
4.2.1	Entering setup	33

	Figure 4.1:BIOS setup program initial screen	33
4.2.2	Standard CMOS Features setup.....	34
	Figure 4.2:CMOS Features setup.....	34
4.2.3	Advanced BIOS Features setup	35
	Figure 4.3:Advanced BIOS Features setup.....	35
4.2.4	Advanced Chipset Features setup	36
	Figure 4.4:Advanced Chipset Features setup	36
4.2.5	Integrated Peripherals	37
	Figure 4.5:Integrated Peripherals.....	37
4.2.6	Power Management Setup	37
	Figure 4.6:Power Management Setup.....	37
4.2.7	PnP/PCI Configurations.....	38
	Figure 4.7:PnP/PCI Configurations	38
4.2.8	PC Health Status	38
	Figure 4.8:PC Health Status.....	38
4.2.9	Frequency/Voltage Control.....	39
	Figure 4.9:Frequency/Voltage Control	39
4.2.10	Load Optimized Defaults.....	40
	Figure 4.10:Load BIOS defaults screen.....	40
4.2.11	Set Password	40
4.2.12	Save & Exit Setup.....	41
4.2.13	Exit Without Saving.....	42
Chapter 5	PCI SVGA Setup	44
5.1	Introduction	44
5.1.1	Chipset	44
5.1.2	Display memory.....	44
5.1.3	Display types.....	44
5.1.4	Dual/Simultaneous Display	44
	Figure 5.1:Selecting Display Settings.....	45
5.2	Installation of the SVGA Driver	46
5.2.1	Installation for Windows 95	46
5.2.2	Installation for Windows 98/Me	50
5.2.3	Installation for Windows NT	55
5.2.4	Installation for Windows 2000	60
5.2.5	Installation for Windows XP	65
5.3	Further Information	71
Chapter 6	Audio Setup.....	74
6.1	Introduction	74
6.2	DOS utilities.....	74
6.2.1	VIA Sound Blaster Pro compatible set up program	74
6.2.2	VIA Sound Blaster Installation.....	74
6.3	Driver installation.....	75
6.3.1	Before you begin.....	75
6.3.2	Windows 95/98 drivers.....	76

	6.3.3	Windows NT drivers.....	83
	6.3.4	Windows 2000 Drivers.....	86
Chapter	7	PCI Bus Ethernet Interface.....	92
	7.1	Introduction.....	92
	7.2	Installation of Ethernet driver.....	92
	7.2.1	Installation for MS-DOS and Windows 3.1.....	92
	7.2.2	Installation for Windows 98.....	93
	7.2.3	Installation for Windows 2000.....	96
	7.2.4	Installation for Windows NT.....	101
	7.3	Further information.....	107
Appendix A		Programming the Watchdog Timer.....	110
	A.1	Supported Input Timing Modes.....	110
Appendix B		Installing PC/104 Modules.....	114
	B.1	Installing PC/104 Modules.....	114
		Figure B.1:PC/104 module mounting diagram.....	115
		Figure B.2:PC/104 module dimensions (mm) (± 0.1).....	116
		Table B.1:PC/104 connectors (CN10).....	116
Appendix C		Pin Assignments.....	120
	C.1	CPU Fan Power Connector (CN2).....	120
		Table C.1:IR connector (FAN 1).....	120
	C.2	Ethernet 10/100Base-T Connector (CN17).....	120
		Table C.2:Ethernet 10/100Base-T connector (CN17).....	120
	C.3	Audio Connector (CN14).....	121
		Table C.3:Audio connector (CN14).....	121
	C.4	Main Power Connector (CN7).....	121
		Table C.4:Main Power Connector (CN7).....	121
	C.5	Keyboard and PS/2 Mouse Connector (CN18).....	122
		Table C.5:Keyboard and mouse connector (CN18).....	122
	C.6	Floppy Disk Drive Connector (CN23).....	122
		Table C.6:Floppy Disk Drive Connector (CN23).....	122
	C.7	IDE Hard Drive Connector (CN11).....	123
		Table C.7:IDE HDD connector (CN11).....	123
	C.8	Parallel Port Connector (CN15).....	124
		Table C.8:Parallel Port Connector (CN15).....	124
	C.9	Power & HDD LED Connector (CN16).....	125
		Table C.9:Power & HDD LED Connector (CN16).....	125
	C.10	USB Connector (CN19).....	125
		Table C.10:USB Connector (CN19).....	125
	C.11	LCD Inverter Backlight Connector (CN5).....	126
		Table C.11:LCD Inverter Backlight Connector (CN5).....	126
	C.12	CRT Display Connector (CN21).....	126

	Table C.12:CRT Display Connector (CN21)	126
C.13	Flat Panel Connector (CN4).....	127
	Table C.13:Flat Panel Connector (CN4).....	127
C.14	Extended Flat Panel Display Connector (CN3)	128
	Table C.14:Extended Flat Panel Display Connector (CN3)	128
C.15	LCD Signal Mapping	129
	Table C.15:LCD Signal Mapping	129
C.16	LVDS Connector (CN6)	130
	Table C.16:LVDS Connector (CN6)	130
C.17	Peripheral Power Connector (CN9)	131
	Table C.17:Peripheral Power Connector (CN9).....	131
C.18	COM1 RS-232 serial port (CN20)	132
	Table C.18:COM1 RS-232 serial port (CN20).....	132
C.19	COM2 RS232/422/485 series port (CN12).....	132
	Table C.19:COM2 RS-232/422/485 series port	132
C.20	CompactFlash Card Connector (CN22)	133
	Table C.20:CompactFlash Card Connector (CN22)...	133
C.21	ATX Power Feature Connector (CN1)	134
	Table C.21:ATX Power Feature Connector (CN1)	134
C.22	IR connector (CN13).....	134
	Table C.22:IR Connector (CN26).....	134
Appendix D	System Assignments	136
D.1	System I/O Ports.....	136
	Table D.1:System I/O ports	136
D.2	1st MB memory map.....	137
	Table D.2:1st MB memory map	137
D.3	DMA channel assignments.....	137
	Table D.3:DMA channel assignments	137
D.4	Interrupt assignments	138
	Table D.4:Interrupt assignments.....	138
Appendix E	Optional Extras for the PCM-9373	140
E.1	Optional LCD cables 10.4" TFT LCD panel (CN14) ...	140
	Table E.1:Optional LCD cables 10.4" TFT LCD panel	140
E.2	Optional USB cable (CN19)	140
E.3	ATX Power Control Cable (CN1).....	140
E.4	Optional 24 bit LCD cable adaptor	140
E.5	+5V Fan for PCM-9373 heat sink.....	140
Appendix F	Mechanical Drawings.....	142

F.1	Mechanical Drawings.....	142
	Figure F.1:PCM-9373 Mechanical Drawing (Component Side)	142
	Figure F.2:PCM-9373 Mechanical Drawing (Solder Side)	143

General Information

This chapter gives background information on the PCM-9373.

Sections include:

- Introduction
- Features
- Specifications
- Board layout and dimensions

Chapter 1 Introduction

1.1 Introduction

The PCM-9373 is a VIA low-power Eden processor single board computer (SBC) with audio controller, a 4X AGP SVGA controller, a PCI 10/100Base-T Ethernet interface, 2 Channel LVDS interface, and one PC/104 expansion connector. The PCM-9373's design is based on the 3.5" HDD form factor that provides a convenient connector layout for easy assembly, more efficient cable connections and better overall embedded system integration. When using a VIA Eden processor, the PCM-9373 achieves outstanding performance that surpasses most SBCs in its class. This compact (only 5.7" x 4") unit offers all the functions of a single board industrial computer, but still fits in the space of a 3.5" floppy drive. On-board features include, two serial ports (one RS-232, one RS-232/422/485), one multi-mode parallel (ECP/EPP/SPP) port, two USB (Universal Serial Bus) ports, a floppy drive controller, and a keyboard/PS/2 mouse interface. The built-in high-speed PCI IDE controller supports both PIO and UDMA/100 bus master modes. Up to four IDE devices can be connected, including large hard disks, CD-ROM drives, and tape backup drives.

The PCM-9373 features power management to minimize power consumption. It complies with the "Green Function" standard and supports Doze, Standby and Suspend modes. In addition, the board's watchdog timer can automatically reset the system or generate an interrupt if the system stops due to a program bug or EMI.

1.1.1 Highly integrated multimedia SBC

The real estate is well-packed on this tightly designed 3.5" single board computer (SBC) with an onboard new VIA Embedded low power Eden or C3 EBGA processor. The VIA Eden processor uses advanced 0.15 μ /0.13 μ CMOS technology with 128KB L1 cache memory and 64KB L2 cache memory on die. This board can operate without a fan at temperatures up to 60 \times C (140 \times F) and typically consumes under 12 Watts while supporting numerous peripherals. This SBC includes a 4X AGP controller, an AC'97 audio interface, a PCI Ethernet interface, and 2 channel LVDS interface. Its design is based on the 3.5" SBC form factor that supports the PC/104 interface for ISA module upgrades. Other on-board features include an LPT, 2 USBs, and 2 serial ports: 1 RS-232, and 1 RS-232/422/485. The SSD solution supports CompactFlash™ cards Type I and Type II.

1.2 Features

- Embedded VIA low-power Eden or C3 EBGA processor
- Supports one 36 bit TFT, 16-bit or 24-bit DSTN LCD panel, with up to 1024 x 768 resolution
- Supports 2 channel LVDS interface
- 100/10Base-T Ethernet interface, IEEE 802.3U compatible
- Supports wake-on-Lan with ATX power supply
- 2 serial ports (one RS-232 and one RS-232/422/485)
- USB interface complies with USB Rev. 1.10
- 62-level Watchdog timer by system reset or IRQ

1.3 Specifications

1.3.1 Standard 3.5" Biscuit SBC Functions

- **CPU:** Onboard Eden 667 MHz (PCM-9373F M0A1) or VIA Eden 400 MHz (PCM-9373F-J0A1) or C3 - 1 GHz processor (PCM-9373F-S0A1) with 128KB L1 cache memory)
- **BIOS:** Award 256 KB Flash memory
- **System memory:** One 144-pin SODIMM socket accepts 64 MB up to 512 MB SDRAM
- **2nd cache memory:** 64 KB on the processor
- **Enhanced IDE interface:** One channels supports up to two EIDE devices. BIOS auto-detect, PIO Mode 3 or Mode 4, supports up to UDMA 33 mode
- **Optional FDD interface:** Supports up to two FDDs
- **Serial ports:** Two serial RS-232 ports, COM1: RS-232, COM2: RS-232/422/485
- **Parallel port:** One parallel port, supports SPP/EPP/ECP mode
- **Keyboard/mouse connector:** Supports standard PC/AT keyboard and a PS/2 mouse
- **Power management:** Supports power saving modes including Normal/Standby/Suspend modes. APM 1.2 compliant
- **Watchdog timer:** 62 level timer intervals

- **USB:** Two USB 1.1 compliant universal serial bus ports
- **Expansion:** One PC/104 connector for ISA control board
- **Solid State Disk**
Supports one 50-pin socket for CFC type I/II

1.3.2 VGA/LCD Interface

- **Chipset:** VIA Twister chip with integrated Savage4 2D/3D/Video Accelerator
- **Frame buffer:** Supports 4/8/16/32MB frame buffer with system memory
- **Interface:** 4X AGP VGA/LCD interface, Support for 9, 12, 15, 18, 24, 36 bit TFT and 16-bit or 24-bit DSTN panel
- **Display mode:** CRT Modes: 1280 x 1024@16bpp (60Hz), 1024 x 768@16bpp (85Hz); LCD/Simultaneous Modes: 1280 x 1024@16bpp (60Hz), 1024 x 768@16bpp (60Hz)
- **LVDS:** Supports 2 Channel (2 x 18bit) LVDS interface

1.3.3 Ethernet Interface

- **Chipset:** RTL 8100
- **Ethernet interface:** IEEE 802.3u 100BASE-T Fast Ethernet compatible
- I/O address switchless setting
- Built-in boot ROM

1.3.4 Audio Function

- **Chipset:** VIA 82C686
- **Audio controller:** AC'97 ver. 2.0 compliant interface
- **Audio interface:** Microphone in, line in, line out

1.3.5 Mechanical and Environmental

- **Dimensions:** 145 x 102 mm (5.9"x 4.2")
- **Power supply voltage:** +5 V \pm 5%
- **Power requirements:**
 - Max**
4.99 A@+5 V (Within 5ms after power on)
 - Typical**
2.40 A@5 V (W/ Eden-400,128 MB)
2.75 A@5 V (W/ Eden-667,128 MB)
4.73 A@5V (W/ C3 1GHz, 128MB)
- **Operating temperature:** 0 ~ 60°C (32 ~ 140°F)
- **Operating Humidity:** 0% ~ 90% relative humidity, non-condensing
- **Weight:** 0.85 kg (weight of total package)

1.4 Board layout: dimensions

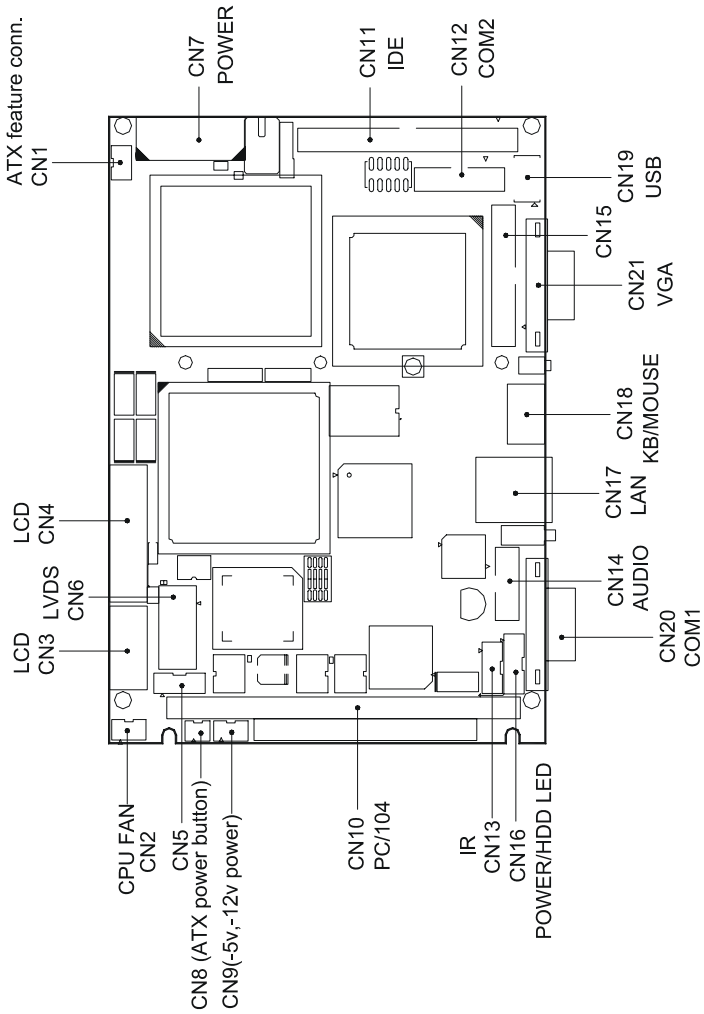


Figure 1.1: Board layout: dimensions

Installation

This chapter explains the setup procedures of the PCM-9373 hardware, including instructions on setting jumpers and connecting peripherals, switches and indicators. Be sure to read all safety precautions before you begin the installation procedure.

Chapter 2 Installation

2.1 Jumpers

The PCM-9373 has a number of jumpers that allow you to configure your system to suit your application. The table below lists the functions of the various jumpers.

Table 2.1: Jumpers

Label	Function
S1	Panel type select
S2	CMOS clear button
S3	System reset button
JP1	COM2 RS232/422/485 & WDT setting

2.2 Connectors

On-board connectors link the PCM-9373 to external devices such as hard disk drives, a keyboard, or floppy drives. The table below lists the function of each of the board's connectors.

Table 2.2: Connectors

Label	Function
CN1	ATX feature connector
CN2	CPU fan power connector
CN3	Ext. flat panel connector
CN4	Flat panel connector
CN5	LCD Inverter control connector
CN6	LVDS connector
CN7	Main Power connector
CN8	ATX power on/off switch connector
CN9	Peripheral power connector (-5V, -12V)

Table 2.2: Connectors

CN10	PC/104 expansion
CN11	IDE hard drive connector (primary)
CN12	COM2 port connector
CN13	IR connector
CN14	Audio connector
CN15	Parallel port connector
CN16	Power & HDD LED connector
CN17	Ethernet connector
CN18	Keyboard and PS/2 mouse connector
CN19	USB channel 1, 2 connector
CN20	COM 1 port connector
CN21	CRT display connector
CN22	CFC connector
CN23	Floppy drive connector (optional)

2.3 Locating jumpers

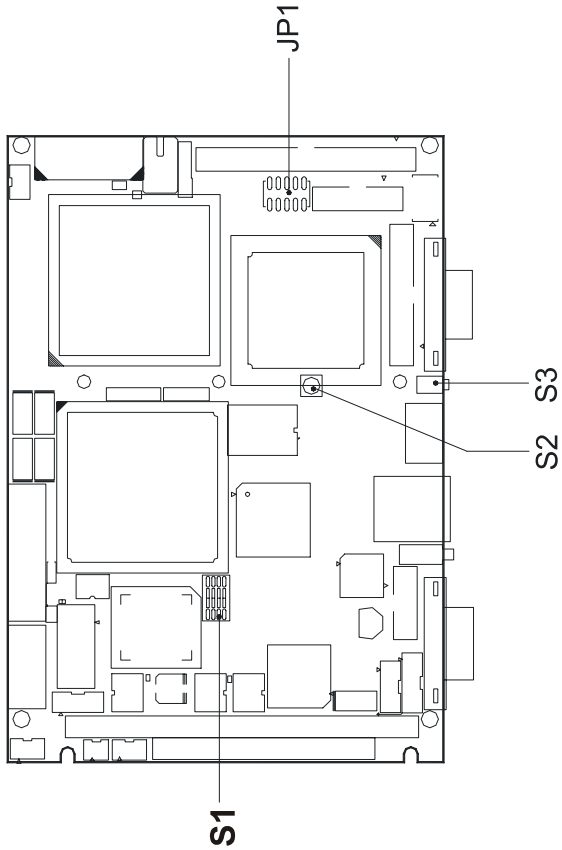


Figure 2.1: Jumper locations

2.4 Locating Connectors

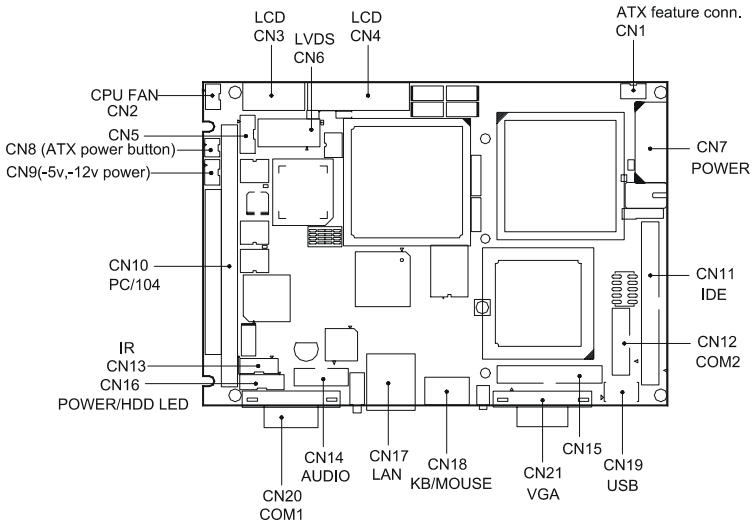


Figure 2.2: Connectors (component side)

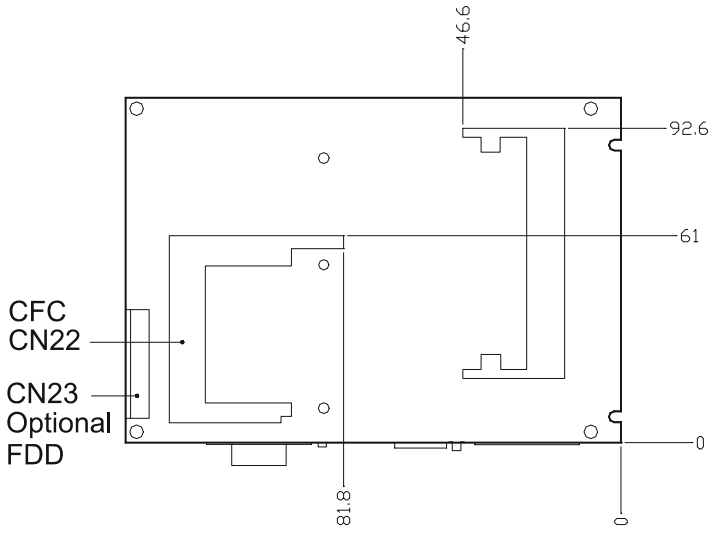
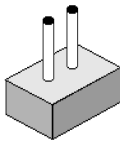


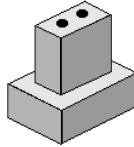
Figure 2.3: Connectors (solder side)

2.5 Setting Jumpers

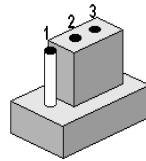
You may configure your card to match the needs of your application by setting jumpers. A jumper is a metal bridge used to close an electric circuit. It consists of two metal pins and a small metal clip (often protected by a plastic cover) that slides over the pins to connect them. To “close” a jumper, you connect the pins with the clip. To “open” a jumper, you remove the clip. Sometimes a jumper will have three pins, labeled 1, 2 and 3. In this case you would connect either pins 1 and 2, or 2 and 3.



open

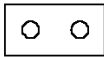


closed



closed 2-3

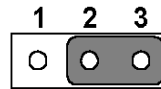
The jumper settings are schematically depicted in this manual as follows:.



open



closed



closed 2-3

A pair of needle-nose pliers may be helpful when working with jumpers.

If you have any doubts about the best hardware configuration for your application, contact your local distributor or sales representative before you make any changes.

Generally, you simply need a standard cable to make most connections.

2.6 Clear CMOS (S2)

Warning! *To avoid damaging the computer, always turn off the power supply before setting “Clear CMOS.” Before turning on the power supply, set the jumper back to “3.0 V Battery On.”*

This jumper is used to erase CMOS data and reset system BIOS information.

The procedure for clearing CMOS is:

1. Turn off the system.
2. Short pin 2 and pin 3.
3. Return jumper to pins 1 and 2.
4. Turn on the system. The BIOS is now reset to its default setting

Table 2.3: CMOS clear (S2)

Condition	Result
unpressed*	Normal
pushed	Clear CMOS

* default setting

2.7 Installing DIMMs

The procedure for installing DIMMs is described below. Please follow these steps carefully. The number of pins are different on either side of the breaks, so the module can only fit in one way. DIMM modules have different pin contacts on each side, and therefore have a higher pin density.

1. Make sure that the two handles of the DIMM socket are in the “open” position. i.e. The handles remain leaning outward.
2. Slowly slide the DIMM module along the plastic guides on both ends of the socket.
3. Press the DIMM module right down into the socket, until you hear a click. This is when the two handles have automatically locked the memory module into the correct position of the socket.

To **remove** the memory module, just push both handles outward, and the module will be ejected from the socket.

2.8 IDE, CDROM hard drive connector (CN11)

The PCM-9373 provides 1 IDE channels which you can attach up to two Enhanced Integrated Device Electronics hard disk drives or CDROM to the PCM-9373's internal controller. The PCM-9373's IDE controller uses a PCI interface. This advanced IDE controller supports faster data transfer, PID mode 3, mode 4 and up to UDMA/33.

2.8.1 Connecting the hard drive

Connecting drives is done in a daisy-chain fashion. This package includes 1 44PIN IDE cable that can connect to 1.8" and 2.5" drives.

1. Connect one end of the cable to CN11. Make sure that the red (or blue) wire corresponds to pin 1 on the connector, which is labeled on the board (on the right side).
2. Plug the other end of the cable into the Enhanced IDE hard drive, with pin 1 on the cable corresponding to pin 1 on the hard drive. (See your hard drive's documentation for the location of the connector.)

If desired, connect a second drive as described above.

Unlike floppy drives, IDE hard drives can connect to either end of the cable. If you install two drives, you will need to set one as the master and one as the slave by using jumpers on the drives. If you install only one drive, set it as the master.

2.9 Solid State Disk

The PCM-9373 provides a CompactFlash™ card socket and DiskOnChip socket for Solid state disk solutions.

2.9.1 CompactFlash (CN22)

The CompactFlash card shares a secondary IDE channel which can be enabled/disabled via the BIOS settings.

2.10 Optional floppy drive connector (CN23)

You can attach up to two floppy drives to the PCM-9373's on-board controller. You can use 3.5" (720 KB, 1.44 MB, and 2.88 MB) drives.

A 26-pin FPC connector cable is required for a dual-drive system. On one end of the cable is a 26-pin FPC-cable connector. On the other end are two sets of floppy disk drive connectors. Each set consists of a 26-pin FPC-cable connector (usually used for 3.5" drives).

2.10.1 Connecting the floppy drive

1. Plug the 26-pin FPC-cable connector into CN23. Make sure that the red wire corresponds to pin one on the connector.
2. Attach the appropriate connector on the other end of the cable to the floppy drive(s). You can use only one connector in the set. The set on the end (after the twist in the cable) connects to the A: drive. The set in the middle connects to the B: drive.

If you are connecting a 3.5" floppy drive, you may have trouble determining which pin is number one. Look for a number printed on the circuit board indicating pin number one. In addition, the connector on the floppy drive may have a slot. When the slot is up, pin number one should be on the right. Check the documentation that came with the drive for more information.

If you desire, connect the B: drive to the connectors in the middle of the cable as described above.

In case you need to make your own cable, you can find the pin assignments for the board's connector in Appendix C.

2.11 Parallel port connector (CN15)

Normally, the parallel port is used to connect the card to a printer. The PCM-9373 includes a multi-mode (ECP/EPP/SPP) parallel port accessed via CN15 and a 26-pin flat-cable connector. You will need an adapter cable if you use a traditional DB-25 connector. The adapter cable has a 26-pin connector on one end, and a DB-25 connector on the other.

The parallel port is designated as LPT1, and can be disabled or changed to LPT2 or LPT3 in the system BIOS setup.

The parallel port interrupt channel is designated to be IRQ7.

You can select ECP/EPP DMA channel via BIOS setup.

2.12 Keyboard and PS/2 mouse connector (CN18)

The PCM-9373 board provides a keyboard connector that supports both a keyboard and a PS/2 style mouse. In most cases, especially in embedded applications, a keyboard is not used. If the keyboard is not present, the standard PC/AT BIOS will report an error or fail during power-on self-test (POST) after a reset. The PCM-9373's BIOS standard setup menu allows you to select "All, But Keyboard" under the "Halt On" selection. This allows no-keyboard operation in embedded system applications, without the system halting under POST.

2.13 Power & HDD LED, Reset Button Connector (CN16, S3)

Next, you may want to install external switches to monitor and control the PCM-9373. These features are optional: install them only if you need them. The Power & HDD LED connector (CN16) is 6-pin Wafer box connector. It provides connections for a power and hard disk access indicator.

2.13.1 Power & HDD LED (CN16)

The HDD LED indicator for hard disk access is an active low signal (24 mA sink rate). Power supply activity LED indicator.

2.13.2 Reset switch (S3)

If you install a reset switch, it should be an open single pole switch. Momentarily pressing the switch will activate a reset. The switch should be rated for 10 mA, 5 V.

2.14 Power connectors (CN9, CN7, CN2)

2.14.1 Peripheral power connector, -5 V, -12 V (CN9)

Supplies secondary power to devices that require -5 V and -12 V.

2.14.2 Main power connector, +5 V, +12 V (CN7)

Supplies main power to the PCM-9373 (+5 V), and to devices that require +12 V.

2.14.3 CPU Fan power supply connector (CN2)

Provides +5V power supply to CPU cooling fan.

2.15 ATX power control connector (CN1, CN8)

2.15.1 ATX feature connector (CN1) and soft power switch connector (CN8)

The PCM-9373 can support an advanced soft power switch function, if an ATX power supply is used. To enable the soft power switch function:

1. Get the specially designed ATX-to-big 4P power cable (PCM-9373 optional item, part no. 1703200100)
2. Connect the 3-pin plug of the cable to CN1 (ATX feature connector).
3. Connect the power on/off button to CN8. (A momentary type of button should be used.)

Important *Make sure that the ATX power supply can take at least a 10 mA load on the 5 V standby lead (5VSB). If not, you may have difficulty powering on your system.*

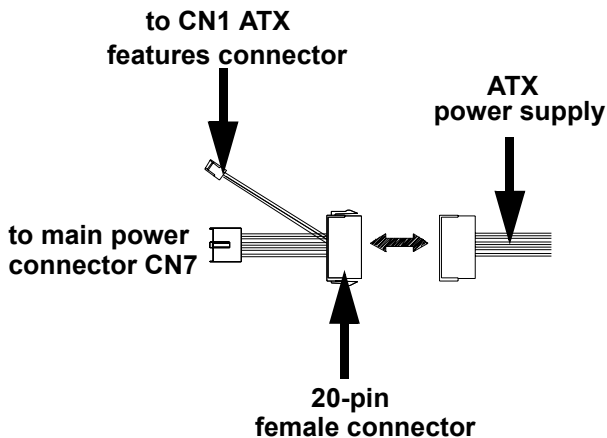


Figure 2.4: Wiring for ATX soft power switch function

2.16 Audio interfaces (CN14)

The PCM-9373 is equipped with a high-quality audio interface, which provides 16-bit CD-quality recording and playback as well as OPL3 compatible FM music. It is supported by all major operating systems.

2.16.1 Audio connector (CN14)

The PCM-9373 provides all major audio signals on a 10-pin flat-cable connector, CN14. These audio signals include Microphone in (mono), Line in (stereo) and Line out (stereo). If you use traditional telephone jack connectors for these audio signals, you will need an adapter cable.

2.17 COM port connector (CN20,CN12)

The PCM-9373 provides two serial ports (COM1: RS-232; COM2: RS-232/422/485) in one DB-9 connector (COM1) and one 14-pin dual-inline, male header. It provides connections for serial devices (a mouse, etc.) or a communication network. You can find the pin assignments for the COM port connector in Appendix C.

2.17.1 COM2 RS-232/422/485 setting (pin 1-6 of JP1)

COM2 can be configured to operate in RS-232, RS-422, or RS-485 mode. This is done via JP1

Table 2.4: JP1: COM2 RS-232/422/485 select

PINS	RS-232*	RS-422	RS-485
1-2	Open	Open	Closed
3-4	Open	Closed	Open
5-6	Closed	Open	Open

2.18 VGA/LCD/LVDS interface connections

The PCM-9373's PCI SVGA interface can drive conventional CRT displays and is capable of driving a wide range of flat panel displays, including passive LCD and active LCD displays. The board has three connectors to support these displays: one for standard CRT VGA monitors, one for flat panel displays, and one for LVDS type LCD panels.

2.18.1 CRT display connector (CN21)

CN21 is a 16-pin, dual-inline header used for conventional CRT displays. A simple one-to-one adapter can be used to match CN21 to a standard 15-pin D-SUB connector commonly used for VGA.

Pin assignments for CRT display connector CN21 are detailed in Appendix C.

2.18.2 Flat panel display connector (CN4)

CN4 consists of a 40-pin connector which can support a 24-bit LCD panel. It is Hirose's product no. DF13A-40DP-1.25 V

The PCM-9373 provides a bias control signal on CN11 that can be used to control the LCD bias voltage. It is recommended that the LCD bias voltage not be applied to the panel until the logic supply voltage (+5 V or +3.3 V) and panel video signals are stable. Under normal operation, the control signal (ENAVEE) is active high. When the PCM-9373's power is

applied, the control signal is low until just after the relevant flat panel signals are present. CN4 can connect up to 24 bit TFT LCD.

2.18.3 Extension flat panel connector (CN3)

CN3 consists of a 20-pin connector which is Hirose’s product no. DF13A-20DP-1.25V. The PCM-9373 supports a 36-bit LCD panel which must be connected to both the CN4 (40-pin) and the CN3 (20-pin). The pin assignments for both CN4 and the CN3 can be found in Appendix C

2.18.4 LVDS LCD panel connector (CN6)

The PCM-9373 uses the VIA Twister chip that supports 2 channel (2 x 18 bit) LVDS LCD panel displays. Users can connect to either an 18-bit or 36-bit LVDS LCD with CN6.

2.18.5 Panel type selection (S1)

S1 is an 8 segment DIP switch for DSTN/TFT panel type and resolution functions.

Table 2.5: S3 Panel Type select

SW 1-1	SW 1-2	SW 1-3	SW 1-4	Panel type		
ON	ON	ON	ON	DSTN**	640x480	18bit
ON	ON	ON	OFF	TFT	640x480	18bit
ON	ON	OFF	ON	TFT	640x480	LVDS
ON	ON	OFF	OFF	(Resvd)		
ON	OFF	ON	ON	(Resvd)		
ON	OFF	ON	OFF	DSTN**	800x600	18bit
ON	OFF	OFF	ON	TFT*	800x600	18bit
ON	OFF	OFF	OFF	TFT	800x600	LVDS
OFF	ON	ON	ON	(Resvd)		
OFF	ON	ON	OFF	(Resvd)		
OFF	ON	OFF	ON	DSTN**	1024x768	36bit
OFF	ON	OFF	OFF	TFT	1024x768	36bit
OFF	OFF	ON	ON	TFT	1024x768	1Chan LVDS
OFF	OFF	ON	OFF	TFT	1024x768	2Chan LVDS
OFF	OFF	OFF	ON	TFT	1024x768	18bit
OFF	OFF	OFF	OFF	TFT	1024x768	24bit

Table 2.5: S3 Panel Type select

* Default setting

** will support in the future

2.19 TV-out interface (optional) (CN4, CN3)

The PCM-9373 board provides optional TV-out module PCM-232 via CN4, CN3. This module output supports composite video and S-video connectors. TV-out generators use both NTSC and PAL formats with 640 x 480 or 800 x 600 resolution.

To set up your video interface:

1. Run the appropriate installation program located on the utility disk. That's all there is to it.

2.20 Ethernet configuration

The PCM-9373 is equipped with a high performance 32-bit PCI-bus Ethernet interface which is fully compliant with IEEE 802.3U 10/100Mbps CSMA/CD standards. It is supported by all major network operating systems.

The medium type can be configured via the RSET8139.EXE program included on the utility disk. (See Chapter 3 for detailed information.)

2.20.1 100Base-T connector (CN17)

100Base-T connections are made via the on-board RJ-45 connector

2.20.2 Network boot

The Network Boot feature can be utilized by incorporating the Boot ROM image files for the appropriate network operating system. The Boot ROM BIOS files are included in the system BIOS, which is on the utility CD disc.

2.21 Watchdog timer configuration

An on-board watchdog timer reduces the chance of disruptions which EMP (electro-magnetic pulse) interference can cause. This is an invaluable protective device for standalone or unmanned applications. Setup involves one jumper and running the control software (refer to Appendix A).

2.21.1 Watchdog timer action (pin 7-10 of JP1)

When the watchdog timer activates (CPU processing has come to a halt), it can reset the system or generate an interrupt on IRQ11. This can be set via setting JP1 as shown below:

Table 2.6: JP1 Watchdog timer action

Pins	System reset*	IRQ11
7-8	closed	open
9-10	open	closed

* Default setting

2.22 USB connectors (CN19)

The PCM-9373 board provides up to four USB (Universal Serial Bus) ports. This gives complete Plug and Play, and hot attach/detach for up to 127 external devices. The USB interfaces comply with USB specification Rev. 1.1, and are fuse protected.

The USB interface is accessed through two 5 x 2-pin flat-cable connectors, CN19 (USB1, 2). You will need an adapter cable if you use a standard USB connector. The adapter cable has a 5 x 2-pin connector on one end and a USB connector on the other.

The USB interfaces can be disabled in the system BIOS setup.

Software Configuration

This chapter details the software configuration information. It shows you how to configure the card to match your application requirements. The AWARD System BIOS is covered in Chapter 4.

Sections include:

- Introduction
- Connections for standard LCDs
- Ethernet interface configuration.

Chapter 3 Software Configuration

3.1 Introduction

The PCM-9373 system BIOS and custom drivers are located in a 256 Kbyte, Flash ROM device, designated U5. A single Flash chip holds the system BIOS, VGA BIOS and network Boot ROM image. The display can be configured via CMOS settings. This method minimizes the number of chips and difficulty of configuration. To set different types of LCD panels, please choose “panel type” from the “integrated peripherals” menu in CMOS setup.

3.2 Connections to Three Standard LCDs

The following tables illustrate typical LCD connection pinouts for the PCM-9373.

3.2.1 Connections to Toshiba LTM10C209A (640 x 480 TFT color LCD)

Table 3.1: Connections to Toshiba LTM10C209A

LTM10C209A		PCM-9373 CN4	
Pin	Name	Pin	Name
1	GND	3	GND
2	CLK	35	SHFCLK
3	GND	34	GND
4	R0	27	P18
5	R1	28	P19
6	R2	29	P20
7	GND	33	GND
8	R3	30	P21
9	R4	31	P22
10	R5	32	P23
11	GND	34	GND
12	G0	19	P10
13	G1	20	P11
14	G2	21	P12
15	GND	8	GND

Table 3.1: Connections to Toshiba LTM10C209A

16	G3	22	P13
17	G4	23	P14
18	G5	24	P15
19	GND	8	GND
20	ENAB	37	M/DE
21	GND	4	GND
22	B0	11	P2
23	B1	12	P3
24	B2	13	P4
25	GND	4	GND
26	B3	14	P5
27	B4	15	P6
28	B5	16	P7
29	GND	3	GND
30	VDD	1	+5 V
31	VDD	2	+5 V

3.2.2 Connections to Toshiba LTM15C151A (1024 x 768 TFT color LCD)

Table 3.2: Connections to Toshiba

LTM15C151A		PCM-9373 CN2	
Pin	Name	Pin	Name
CN1-1	GND	CN 4-33	GND
CN1-2	NCLK	CN 4-35	LDSCCLK1
CN1-3	NC		
CN1-4	NC		
CN1-5	GND	CN 4-3	GND
CN1-6	OR0	CN 4-9	PD0
CN1-7	OR1	CN 4-11	PD2
CN1-8	OR2	CN 4-13	PD4
CN1-9	OR3	CN 4-15	PD6
CN1-10	OR4	CN 4-17	PD8
CN1-11	OR5	CN 4-19	PD10
CN1-12	GND	CN 4-3	GND

Table 3.2: Connections to Toshiba

CN1-13	OG0	CN 4-21	PD12
CN1-14	OG1	CN 4-23	PD14
CN1-15	OG2	CN 4-25	PD16
CN1-16	OG3	CN 4-27	PD18
CN1-17	OG4	CN 4-29	PD20
CN1-18	OG5	CN 4-31	PD22
CN1-19	GND	CN 3-1	GND
CN1-20	OB0	CN 3-3	PD24
CN1-21	OB1	CN 3-5	PD26
CN1-22	OB2	CN 3-7	PD28
CN1-23	OB3	CN 3-9	PD30
CN1-24	OB4	CN 3-11	PD32
CN1-25	OB5	CN 3-13	PD34
CN1-26	ENAB	CN 4-37	M/DE
CN1-27	GND	CN 4-34	GND
CN1-28	VDD	CN 4-1	+5V
CN1-29	VDD	CN 4-2	+5V
CN1-30	GND	CN 4-8	GND

3.2.3 Connections to Toshiba LTM12C275A (800 x 600 TFT color LCD)

Table 3.3: Connections to Toshiba LTM12C275A

LTM12C275A		PCM-9373 CN4	
Pin	Name	Pin	Name
1	GND	3	GND
2	NCLK	35	SHFCLK
3	NC	-	NC
4	NC	-	NC
5	GND	4	GND
6	R0	27	P18
7	R1	28	P19
8	R2	29	P20
9	R3	30	P21

Table 3.3: Connections to Toshiba LTM12C275A

10	R4	31	P22
11	R5	32	P23
12	GND	8	GND
13	G0	19	P10
14	G1	20	P11
15	G2	21	P12
16	G3	22	P13
17	G4	23	P14
18	G5	24	P15
19	GND	33	GND
20	B0	11	P2
21	B1	12	P3
22	B2	13	P4
23	B3	14	P5
24	B4	15	P6
25	B5	16	P7
26	ENAB	37	M/DE
27	GND	34	GND
28	VCC	5	+5 V
29	VCC	6	+5 V
30	GND	39	GND

3.3 Ethernet software configuration

The PCM-9373's on-board Ethernet interface supports all major network operating systems. To configure the medium type, to view the current configuration, or to run diagnostics, do the following:

1. Power the PCM-9373 on. Make sure that the RSET8139.EXE file is located in the working drive.
2. At the prompt, type RSET8139.EXE and press <Enter>. The Ethernet configuration program will then be displayed.
3. This simple screen shows all the available options for the Ethernet interface. Just highlight the option you wish to change by using the Up and Down keys. To change a selected item, press <Enter>, and a screen will appear with the available options. Highlight your

option and press <Enter>. Each highlighted option has a helpful message guide displayed at the bottom of the screen for additional information.

4. After you have made your selections and are sure this is the configuration you want, press ESC. A prompt will appear asking if you want to save the configuration. Press Y if you want to save.

The Ethernet Setup Menu also offers three very useful diagnostic functions. These are:

1. Run EEPROM Test.
2. Run Diagnostics on Board.
3. Run Diagnostics on Network.

Each option has its own display screen that shows the format and result of any diagnostic tests undertaken.

Note *For Ethernet installation, please see Chapter 7*

CHAPTER 4

Award BIOS Setup

This chapter describes how to set BIOS configuration data.

Chapter 4 Award BIOS Setup

4.1 System test and initialization

These routines test and initialize board hardware. If the routines encounter an error during the tests, you will either hear a few short beeps or see an error message on the screen. There are two kinds of errors: fatal and non-fatal. The system can usually continue the boot up sequence with non-fatal errors. Non-fatal error messages usually appear on the screen along with the following instructions:

press <F1> to RESUME

Write down the message and press the F1 key to continue the bootup sequence.

4.1.1 System configuration verification

These routines check the current system configuration against the values stored in the board's CMOS memory. If they do not match, the program outputs an error message. You will then need to run the BIOS setup program to set the configuration information in memory.

There are three situations in which you will need to change the CMOS settings:

1. You are starting your system for the first time
2. You have changed the hardware attached to your system
3. The CMOS memory has lost power and the configuration information has been erased.

The PCM-9373 Series' CMOS memory has an integral lithium battery backup. The battery backup should last ten years in normal service, but when it finally runs down, you will need to replace the complete unit.

4.2 Award BIOS setup

Award's BIOS ROM has a built-in Setup program that allows users to modify the basic system configuration. This type of information is stored in battery-backed CMOS RAM so that it retains the Setup information when the power is turned off.

4.2.1 Entering setup

Power on the computer and press immediately. This will allow you to enter Setup.

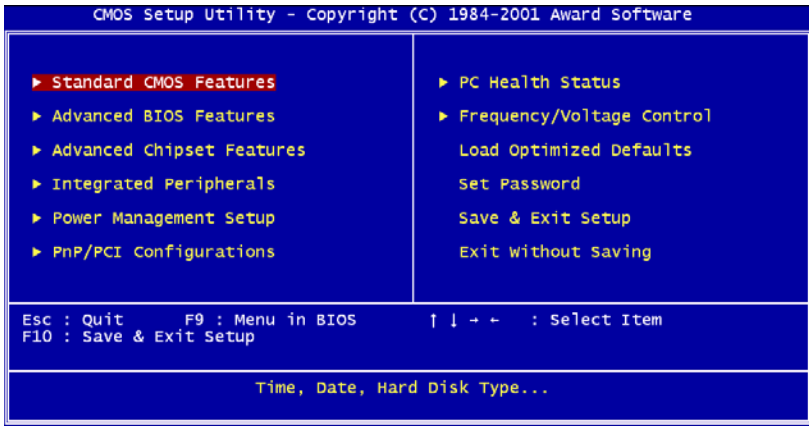


Figure 4.1: BIOS setup program initial screen

4.2.2 Standard CMOS Features setup

When you choose the Standard CMOS Features option from the Initial Setup Screen menu, the screen shown below is displayed. This standard Setup Menu allows users to configure system components such as date, time, hard disk drive, floppy drive and display. Once a field is highlighted, on-line help information is displayed in the left bottom of the Menu screen.

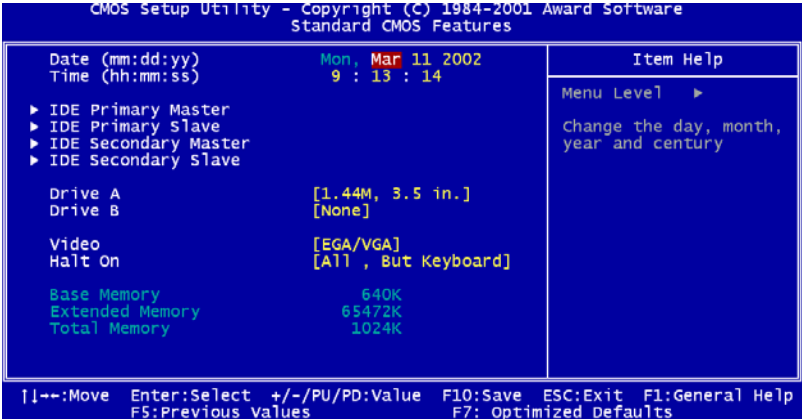


Figure 4.2: CMOS Features setup

4.2.3 Advanced BIOS Features setup

By choosing the Advanced BIOS Features Setup option from the Initial Setup Screen menu, the screen below is displayed. This sample screen contains the manufacturer's default values for the PCM-9373 Series.

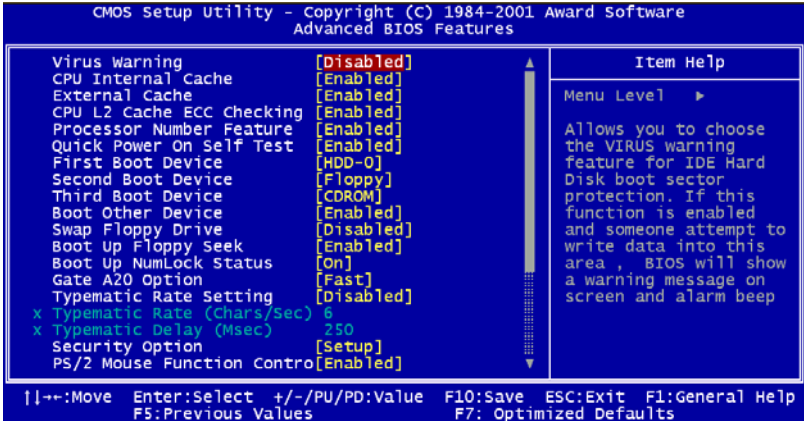


Figure 4.3: Advanced BIOS Features setup

4.2.4 Advanced Chipset Features setup

By choosing the Advanced Chipset Features option from the Initial Setup Screen menu, the screen below is displayed. This sample screen contains the manufacturer's default values for the PCM-9373 Series.

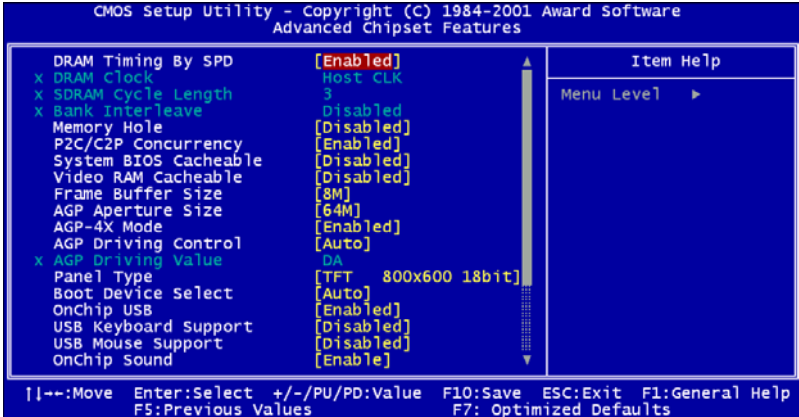


Figure 4.4: Advanced Chipset Features setup

4.2.5 Integrated Peripherals

Choosing the Integrated Peripherals option from the Initial Setup Screen menu should produce the screen below. Here we see the manufacturer's default values for the PCM-9373 Series.

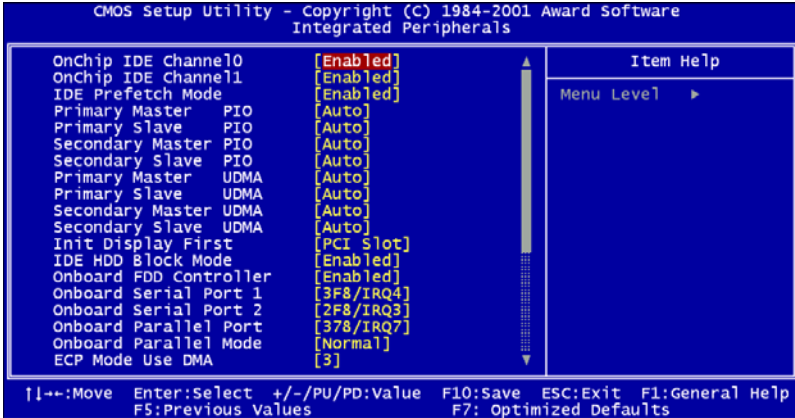


Figure 4.5: Integrated Peripherals

4.2.6 Power Management Setup

By choosing the Power Management Setup option from the Initial Setup Screen menu, the screen below is displayed. This sample screen contains the manufacturer's default values for the PCM-9373 Series.

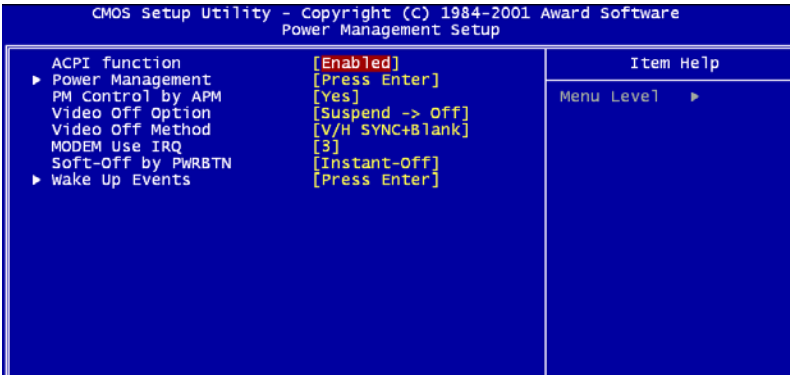


Figure 4.6: Power Management Setup

4.2.7 PnP/PCI Configurations

By choosing the PnP/PCI Configurations option from the Initial Setup Screen menu, the screen below is displayed. This sample screen contains the manufacturer's default values for the PCM-9373 Series.

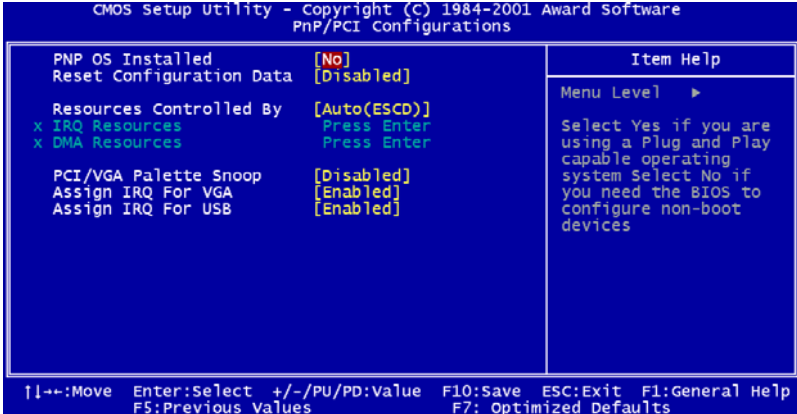


Figure 4.7: PnP/PCI Configurations

4.2.8 PC Health Status

The PC Health Status option displays information such as CPU and motherboard temperatures, fan speeds, and core voltage.

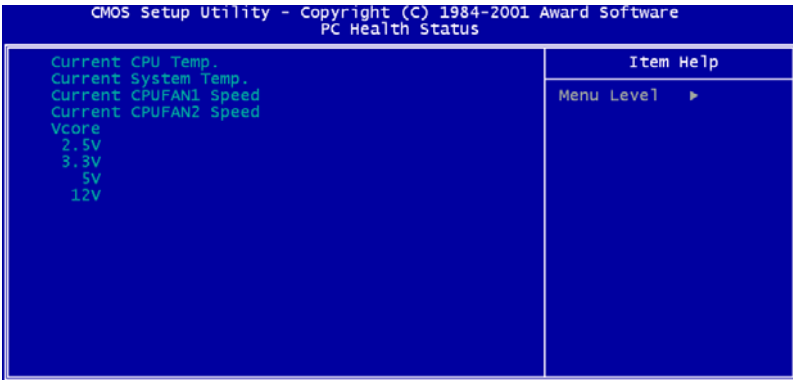


Figure 4.8: PC Health Status

4.2.9 Frequency/Voltage Control

By choosing the Frequency/Voltage Control option from the Initial Setup Screen menu, the screen below is displayed. This sample screen contains the manufacturer's default values for the PCM-9373

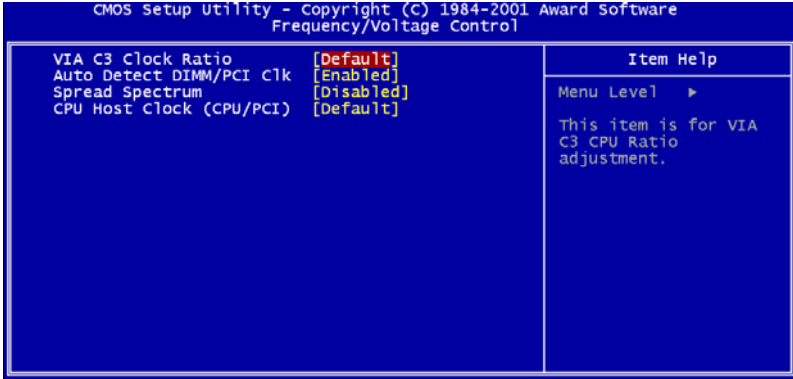


Figure 4.9: Frequency/Voltage Control

Caution *Incorrect settings in Frequency/Voltage Control may damage the system CPU, video adapter, or other hardware.*

4.2.10 Load Optimized Defaults

Load Optimized Defaults loads the default system values directly from ROM. If the stored record created by the Setup program should ever become corrupted (and therefore unusable), these defaults will load automatically when you turn the PCM-9373 Series system on.

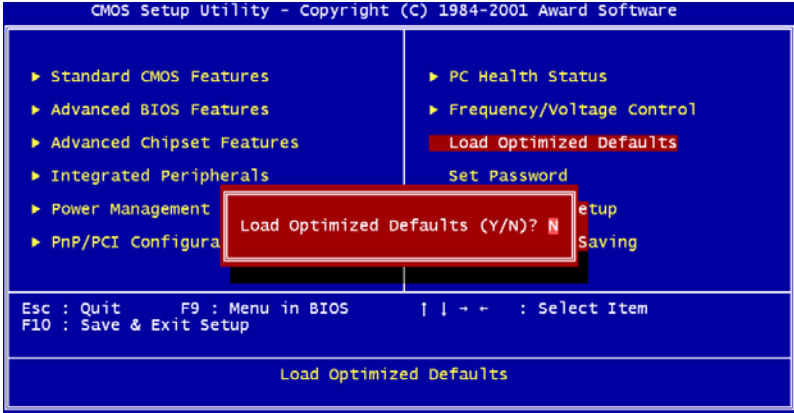


Figure 4.10: Load BIOS defaults screen

4.2.11 Set Password

Note *To enable this feature, you should first go to the Advanced BIOS Features menu, choose the Security Option, and select either Setup or System, depending on which aspect you want password protected. Setup requires a password only to enter Setup. System requires the password either to enter Setup or to boot the system. A password may be at most 8 characters long.*

To Establish Password

1. Choose the Set Password option from the CMOS Setup Utility main menu and press <Enter>.
2. When you see “Enter Password,” enter the desired password and press <Enter>.

3. At the “Confirm Password” prompt, retype the desired password, then press <Enter>.
4. Select Save to CMOS and EXIT, type <Y>, then <Enter>.

To Change Password

1. Choose the Set Password option from the CMOS Setup Utility main menu and press <Enter>.
2. When you see “Enter Password,” enter the existing password and press <Enter>.
3. You will see “Confirm Password.” Type it again, and press <Enter>.
4. Select Set Password again, and at the “Enter Password” prompt, enter the new password and press <Enter>.
5. At the “Confirm Password” prompt, retype the new password, and press <Enter>.
6. Select Save to CMOS and EXIT, type <Y>, then <Enter>.

To Disable Password

1. Choose the Set Password option from the CMOS Setup Utility main menu and press <Enter>.
2. When you see “Enter Password,” enter the existing password and press <Enter>.
3. You will see “Confirm Password.” Type it again, and press <Enter>.
4. Select Set Password again, and at the “Enter Password” prompt, don’t enter anything; just press <Enter>.
5. At the “Confirm Password” prompt, again don’t type in anything; just press <Enter>.
6. Select Save to CMOS and EXIT, type <Y>, then <Enter>.

4.2.12 Save & Exit Setup

If you select this option and press <Y> then <Enter>, the values entered in the setup utilities will be recorded in the chipset’s CMOS memory. The microprocessor will check this every time you turn your system on and use the settings to configure the system. This record is required for the system to operate.

4.2.13 Exit Without Saving

Selecting this option and pressing <Enter> lets you exit the Setup program without recording any new values or changing old ones.

PCI SVGA Setup

- Introduction
- Installation of SVGA drivers
 - for Windows 95/98/Me
 - for Windows NT/2000/XP
- Further information

Chapter 5 PCI SVGA Setup

5.1 Introduction

The PCM-9373 has an onboard AGP flat panel/VGA interface. The specifications and features are described as follows:

5.1.1 Chipset

The PCM-9373 uses a VIA Twister 8606T chipset from VIA Technology Inc. for its AGP/SVGA controller. It supports many popular LCD, and LVDS LCD displays and conventional analog CRT monitors. The VIA8606T VGA BIOS supports color TFT and DSTN LCD flat panel displays. In addition, it also supports interlaced and non-interlaced analog monitors (color and monochrome VGA) in high-resolution modes while maintaining complete IBM VGA compatibility. Digital monitors (i.e. MDA, CGA, and EGA) are NOT supported. Multiple frequency (multisync) monitors are handled as if they were analog monitors.

5.1.2 Display memory

The Twister chip can support 8/16/32MB frame buffer shared with system memory; the VGA controller can drive CRT displays or color panel displays with resolutions up to 1280 x 1024 at 16 M colors.

5.1.3 Display types

CRT and panel displays can be used simultaneously. The PCM-9373 can be set in one of three configurations: on a CRT, on a flat panel display, or on both simultaneously. The system is initially set to simultaneous display mode. If you want to enable the CRT display only or the flat panel display only, please contact VIA Technology Inc., or our sales representative for detailed information.

5.1.4 Dual/Simultaneous Display

The PCM-9373 uses a VIA Twister VT8606T LCD controller that is capable of providing simultaneous dual view display of the same content on a flat panel and CRT.

To set up dual view (simultaneous mode) under Windows 9x, Windows ME, Windows NT/2000/XP, follow these steps:

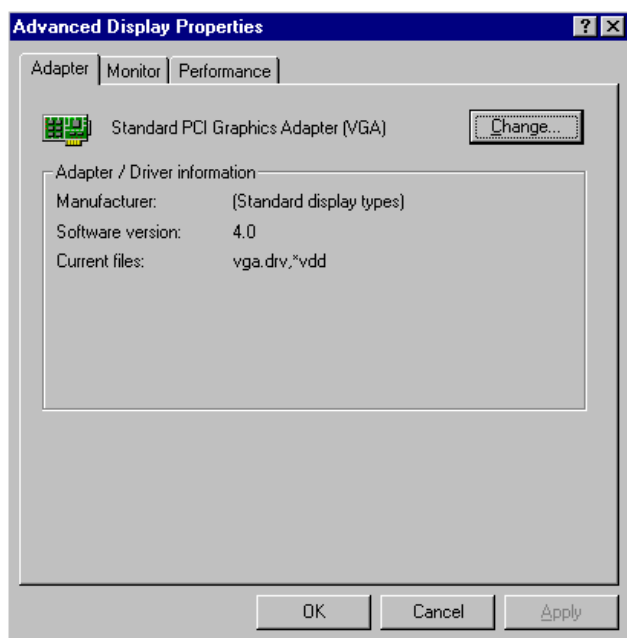
1. Open the Control panel, and select "Display", "Settings".
2. Select " CRT+LCD " or " CRT+TV " for dual view

3. Click “OK”.

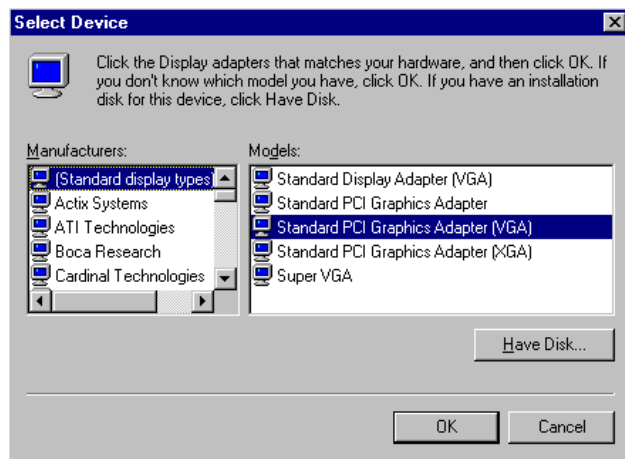


Figure 5.1: Selecting Display Settings

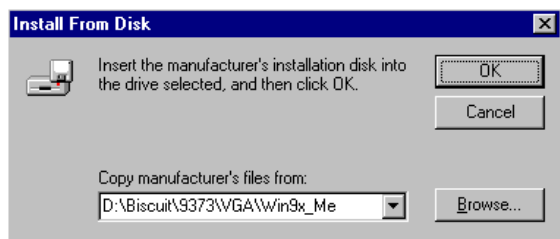
2. Choose the "Adapter" tab, then press the "Change..." button.



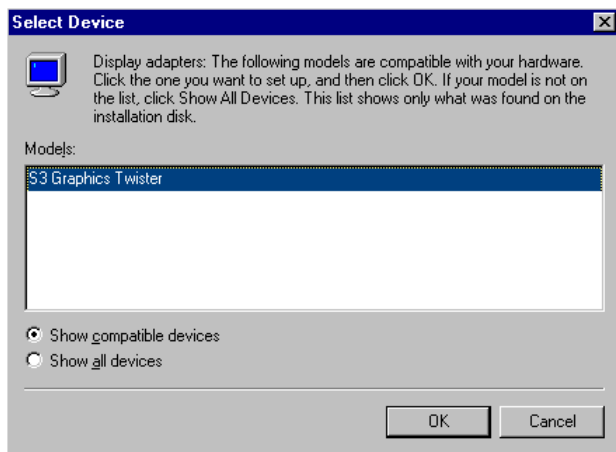
3. Press the "Have Disk" button.



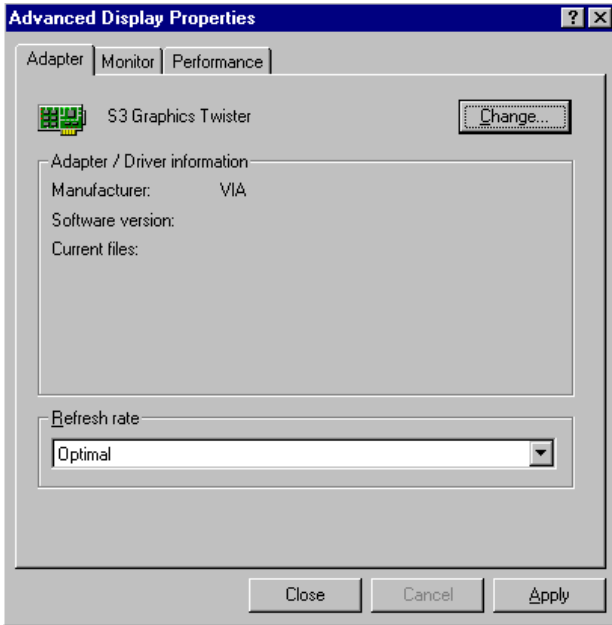
- Type in the path:
D:\Biscuit\9373\VGA\Win9x_Me



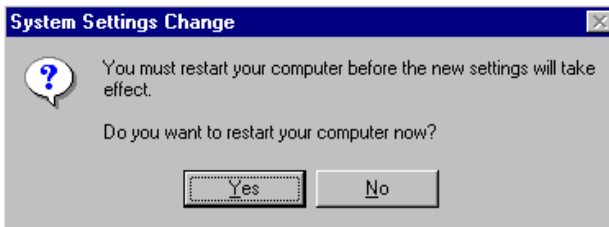
- Select the highlighted item, and click the "OK" button.



6. "S3 GraphicsTwister" appears under the adapter tab. Click the "Apply" button, then the "OK" button.

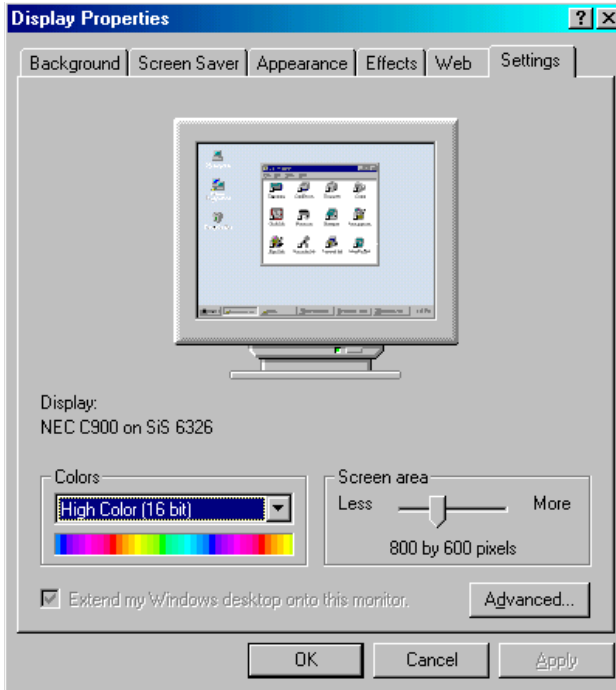


7. Press "Yes" to reboot.

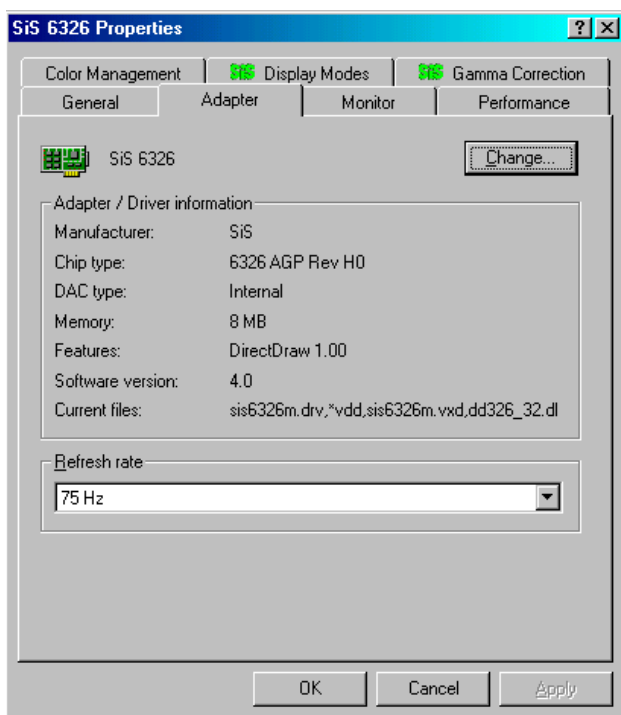


5.2.2 Installation for Windows 98/Me

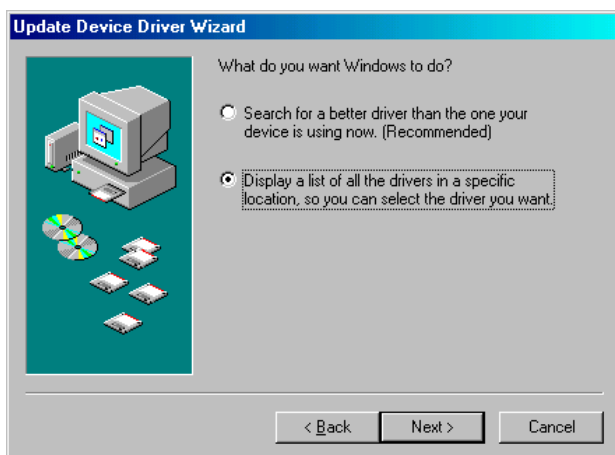
1. Select "Start", "Settings", "Control Panel", "Display", and "Settings," then press the "Advanced..." button.



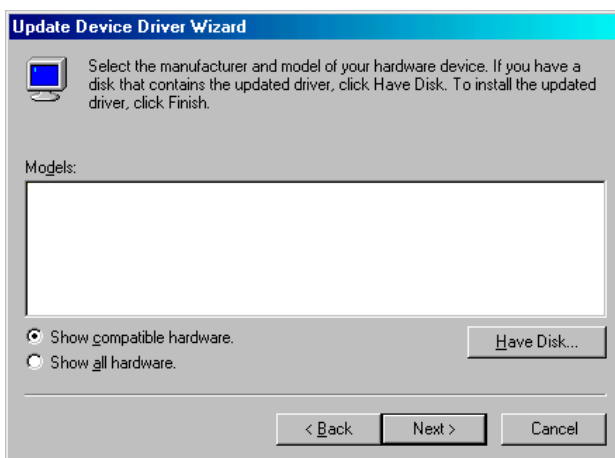
2. Select “Adapter,” then “Change.”



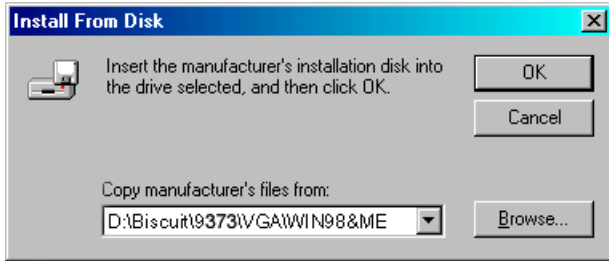
3. Press “Next,” then “Display a list....”



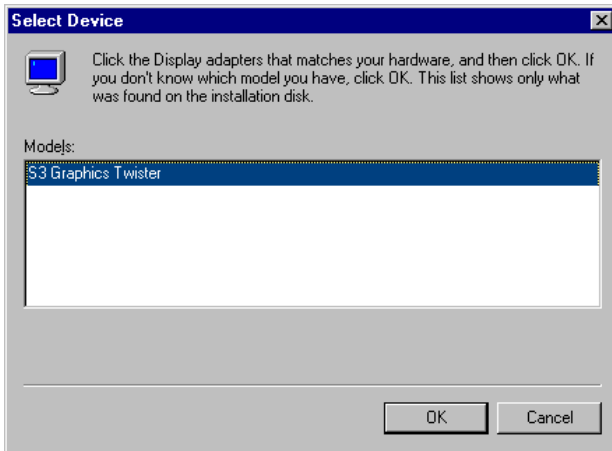
4. Press the “Have disk...” button.



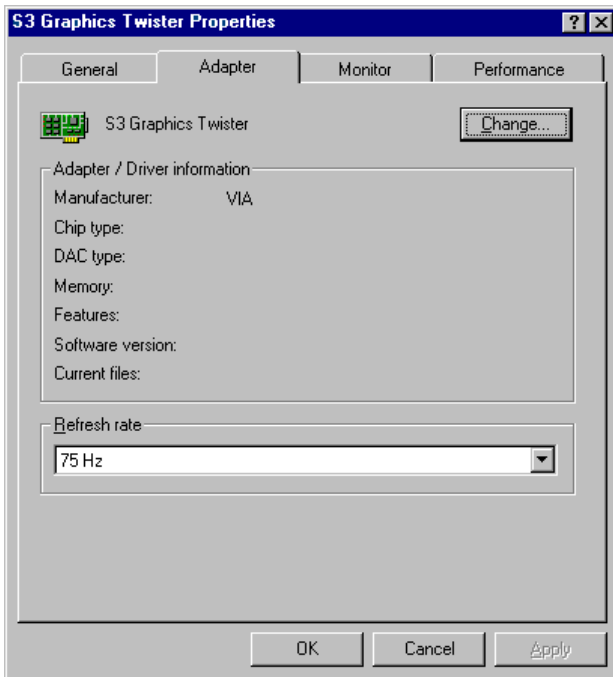
5. Insert the CD into the CD-ROM drive. Type in the path **D:\Biscuit\9373\VGA\Win9x_Me**
Then press “OK”



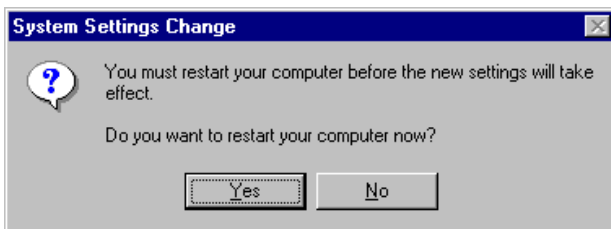
6. Select the highlighted item, then click “OK.”



7. "S3 Graphics Twister" appears under the adapter tab. Click the "Apply" button.



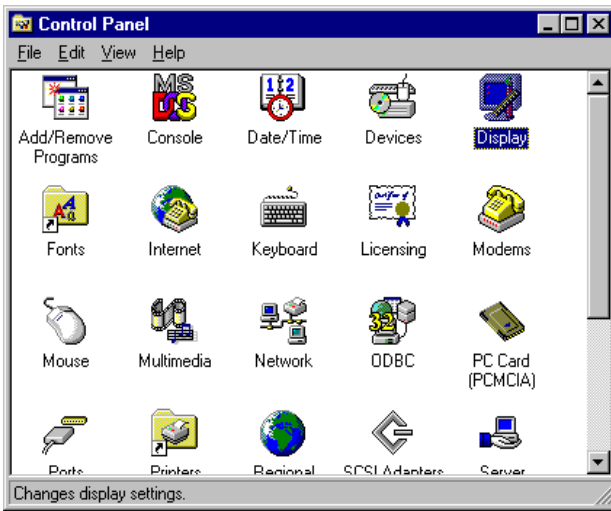
8. Press "Yes" to reboot.



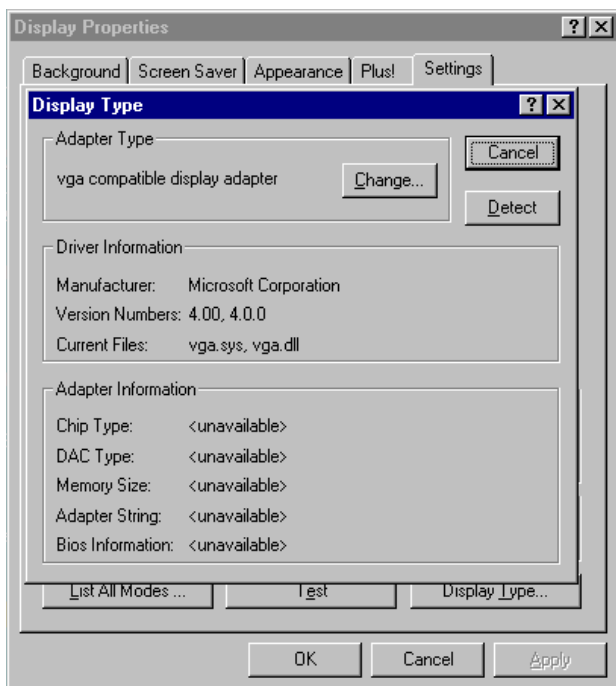
5.2.3 Installation for Windows NT

Note: *Service Pack X (X = 3, 4, 5, 6,...) must be installed first, before you install the Windows NT VGA driver.*

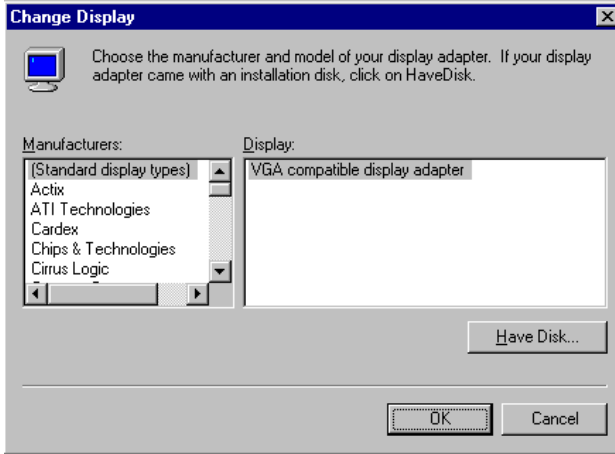
1. Select "Start", "Settings", "Control Panel" and double click the "Display" icon.



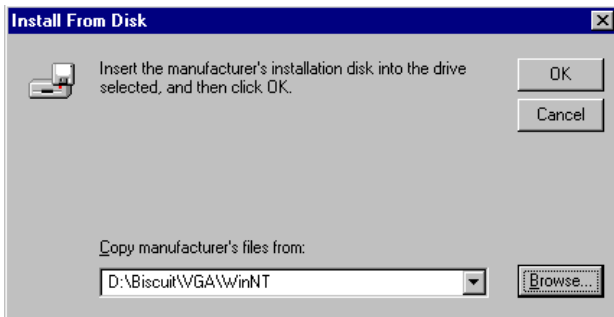
3. Press the "Change..." button.



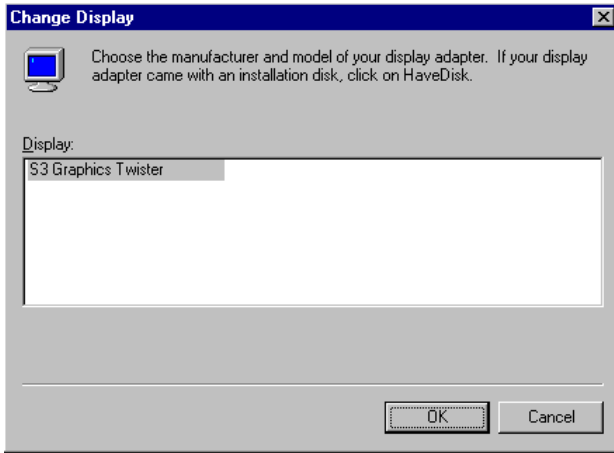
4. Click the "Have Disk..." button.



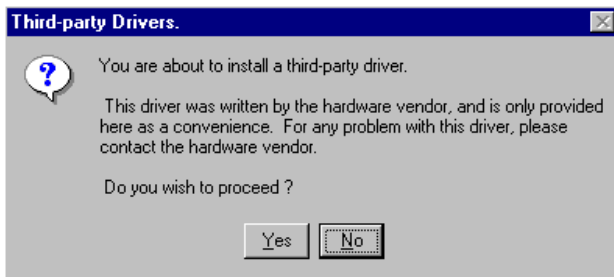
5. Type the path:
D:\Biscuit\VGA\WinNT
Press the "OK" button.



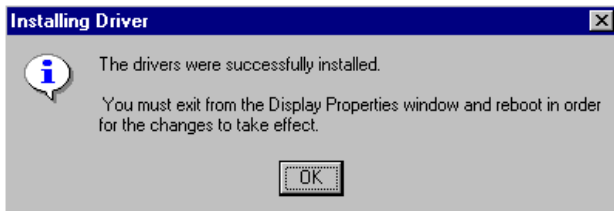
6. Select the highlighted item, and click the "OK" button.



7. Press "Yes" to proceed.

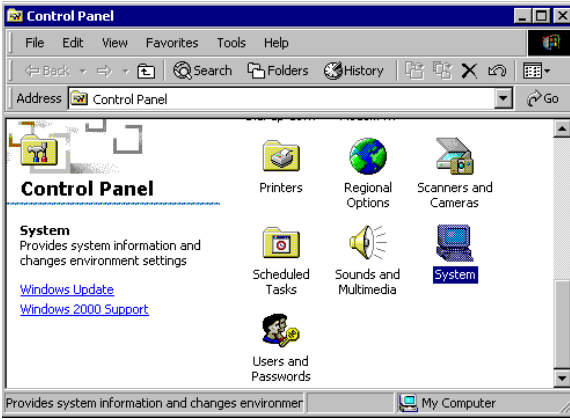


8. Press "OK" to reboot.

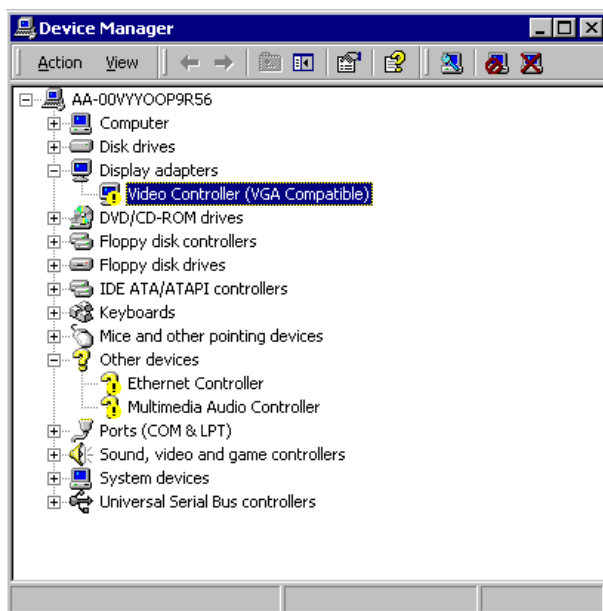


5.2.4 Installation for Windows 2000

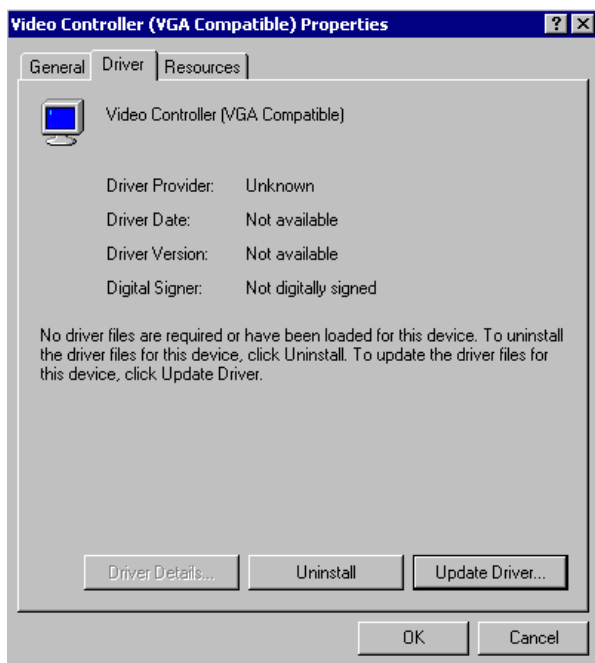
1. Select "System", "Settings", "Control Panel" and double click the "system" icon.



2. Choose the "Video Controller (VGA Compatible)" button.



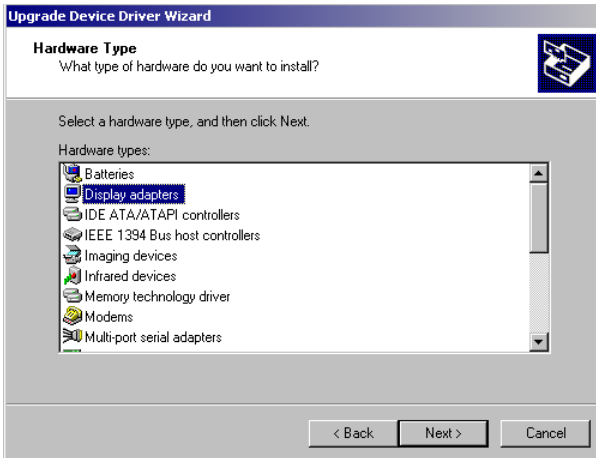
3. Choose the "Drive" button, press "Update Driver..." button.



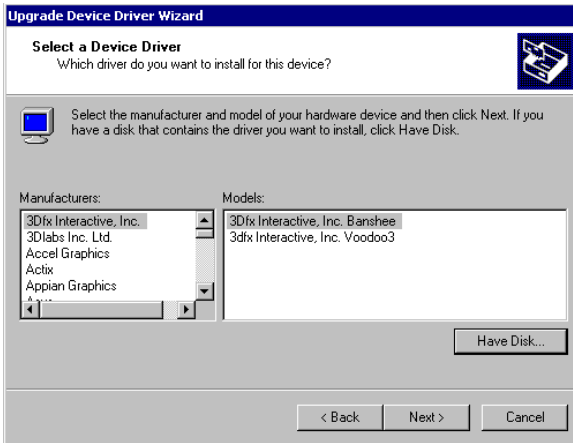
4. Choose "Display a list of..." , then press "Next" button.



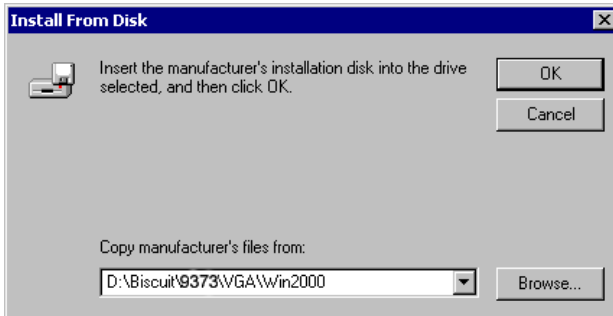
5. Choose "Display adapters", press "Next" button.



6. Click the “Have Disk” button.



7. Type the path `D:\Biscuit\9373\VGA\Win2000` press the “OK” button.

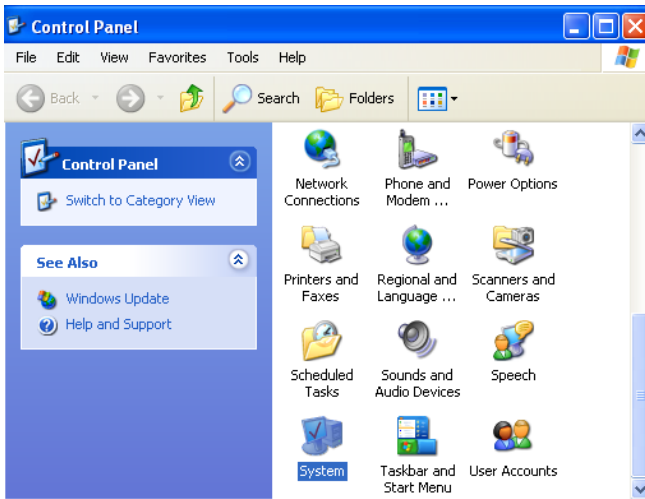


8. Press "Finish" to reboot.

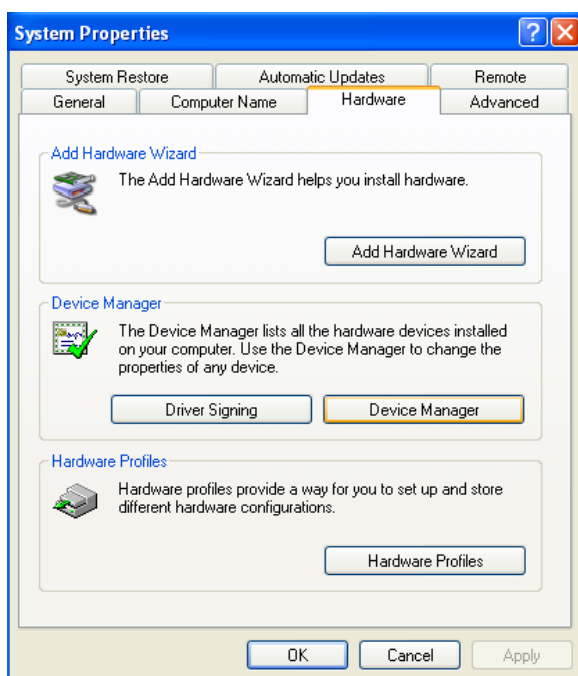


5.2.5 Installation for Windows XP

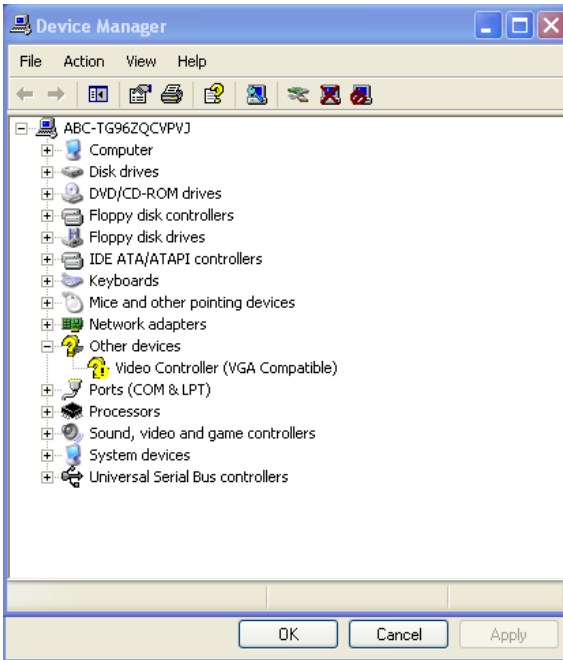
1. Select "System", "Settings", "Control Panel" and double click the "system" icon.



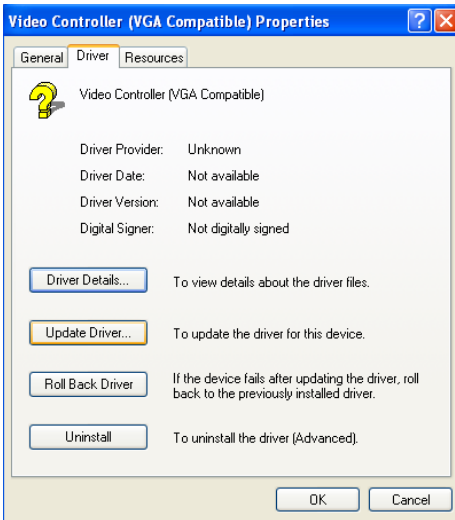
2. Choose “Hardware” and “Device Manager”, press “OK” button.



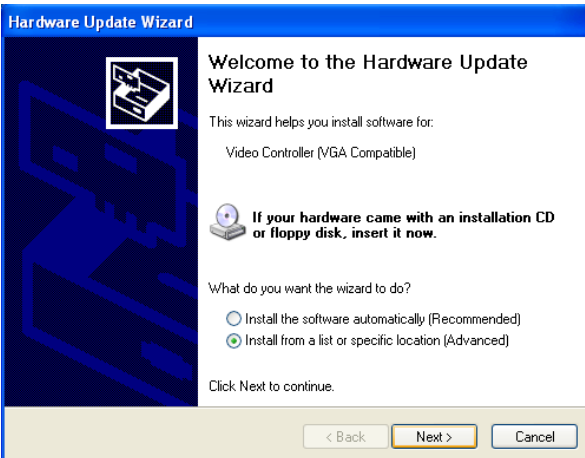
3. Choose “Video Controller (VGA Compatible), press “OK” button.



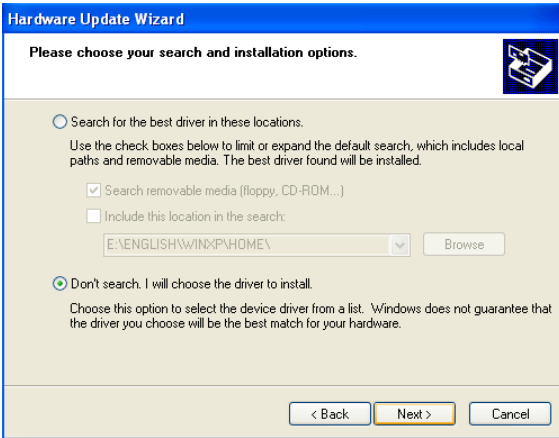
4. Choose "Driver", "Update Driver", press "OK" button.



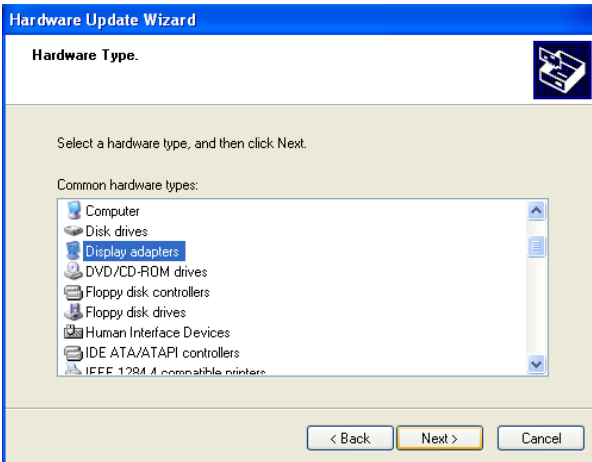
5. Choose "Install from a list.....", press "Next".



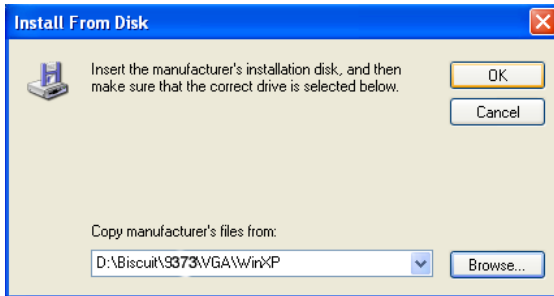
6. Choose “Don’t search. I will....”, press “Next” button.



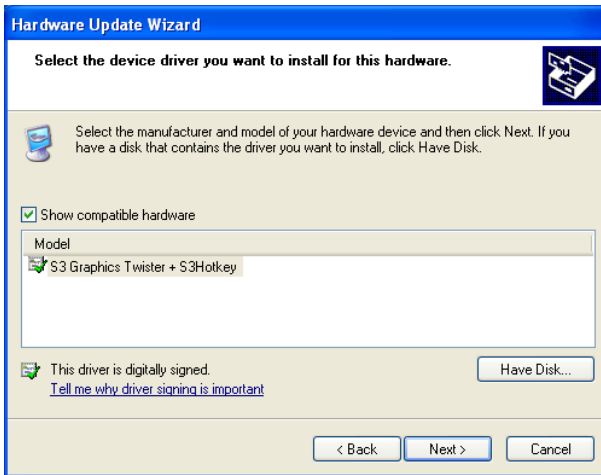
7. Choose “Display adapters”, press “Next” button.



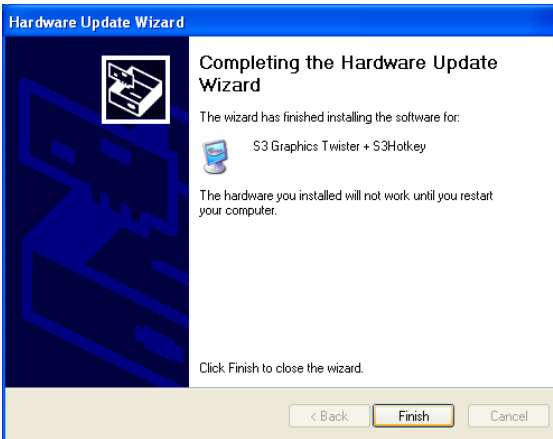
8. Type the path D:\Biscuit\9373\VGA\WinXP then press “OK” button.



9. Choose “S3 Graphics Twister + S3 Hotkey” then press “Next” button.



10. Press "Finish" to reboot.



5.3 Further Information

For further information about the AGP/VGA installation in your PCM-9373, including driver updates, troubleshooting guides and FAQ lists, visit the following web resources:

VIA website: www.via.com.tw

Audio Setup

The PCM-9373 is equipped with an audio interface that records and plays back CD-quality audio. This chapter provides instructions for installing the software drivers included on the audio driver diskettes.

Chapter 6 Audio Setup

6.1 Introduction

The PCM-9373's on-board audio interface provides high-quality stereo sound and FM music synthesis (ESFM) by using the VIA VT82C686 audio controller from VIA. The audio interface can record, compress, and play back voice, sound, and music with built-in mixer control.

The PCM-9373 on board audio interface also supports the Plug and Play (PnP) standard and provides PnP configuration for the audio, FM, and MPU-104 logical devices. It is compatible with Sound Blaster™; Sound Blaster Pro™ version 3.01, voice and music functions. The ESFM synthesizer is register compatible with the OPL3 and has extended capabilities.

6.2 DOS utilities

6.2.1 VIA Sound Blaster Pro compatible set up program

Please "Enable" the Sound Blaster setting in the BIOS before playing Sound Blaster compatible DOS games. To enable the settings in the BIOS:

INTEGRATED PERIPHERALS -> Onboard Legacy Audio
-> Sound Blaster (Disable -> Enable)

Chipset Feature Setup->On Chip Sound (Disable-> Enable)

The Sound Blaster Pro compatible sound chip is integrated into the VIA PCI audio device in order to have Sound Blaster compatible DOS games running on the system.

If you want to play Sound Blaster compatible DOS games under the real mode MS-DOS or the "Restart in MS-DOS" from Win9x, then you should run this setup program to enable OPL3 MIDI music. Otherwise, the sound effects will be heard, but not the music. If you want to play legacy games in a Windows DOS Box, then you don't need to install this program.

6.2.2 VIA Sound Blaster Installation

Follow these steps to enable the Sound Blaster Pro compatible functions.

1. Enable the Sound Blaster first on the BIOS setting of the "Onboard Legacy Audio" and "On-Chip Sound".

2. Run the "Install.exe".
A:> INSTALL
3. The program will copy the relative files into the directory which you assign. Next, the program will insert the following new line into the AUTOEXEC.BAT and copy the original AUTOEXEC.BAT to AUTOEXEC.VIA.
C: \VIAAUDIO\VIAAUDIO.COM
4. Reboot the system when the installation is complete.
5. Uninstall by deleting the new line from the AUTOEXEC.BAT.

6.3 Driver installation

6.3.1 Before you begin

Please read the instructions in this chapter carefully before you attempt installation. The audio drivers for the PCM-9373 board are located on the audio driver CD. Run the supplied SETUP program to install the drivers; don't copy the files manually.

Note: *The files on the software installation diskette are compressed. Do not attempt to install the drivers by copying the files manually. You must use the supplied SETUP program to install the drivers.*

6.3.2 Windows 95/98 drivers

1. Click "Start" and select "Settings". Click "Control Panel" and double-click "Add New Hardware".



2. In the Add New Hardware Wizard window, click "Next".



3. In the following Add New Hardware Wizard window, click "Next" for Windows to search for Plug and Play devices.



4. In the following Add New Hardware Wizard window, select "No, the device isn't in the list." and click "Next".



5. In the following Add New Hardware Wizard window, select "No, I want to select..." and click "Next".



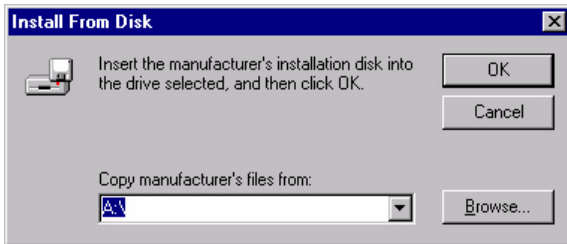
6. In the following Add New Hardware Wizard window, select "Sound, video and game controllers" and click "Next".



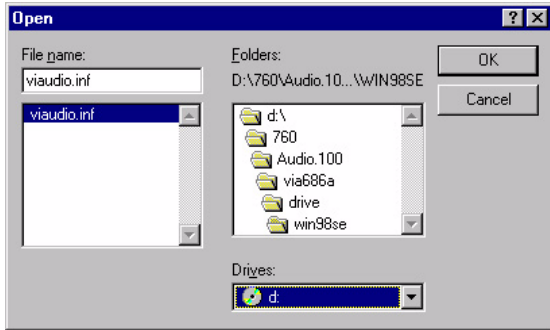
7. In the following Add New Hardware Wizard window, click "Have Disk...".



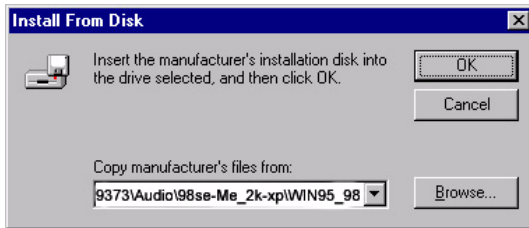
8. In the Install From Disk window, click "Browse".



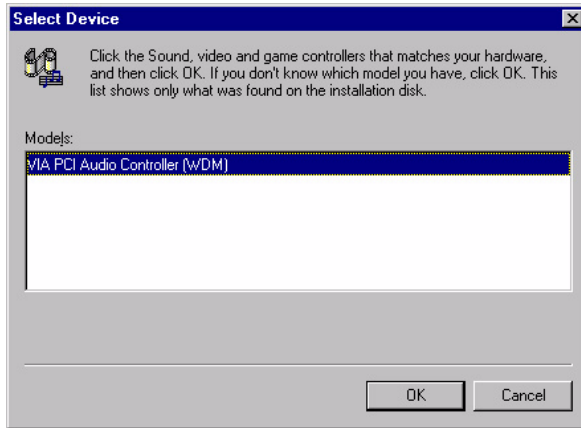
9. In the Open window, select "D:\Biscuit\9373\Audio\98se_Me_2k_xp\WIN95_98.



10. In the Install From Disk window, click " OK".



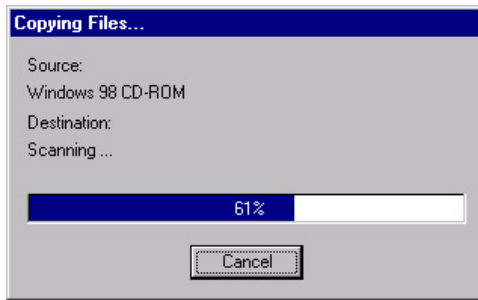
11. In the Select Device window, select "VIA PCI Audio Controller (WDM)" and click "OK".



12. In the Add New Hardware Wizard window, click "Next".



13. The Copying Files... window will appear.

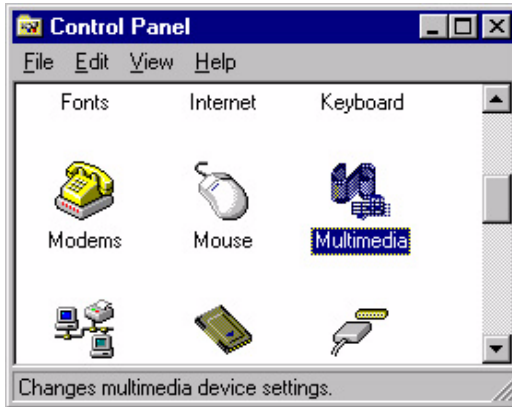


14. In the Add New Hardware Wizard window, click "Finish". Then reboot the system.

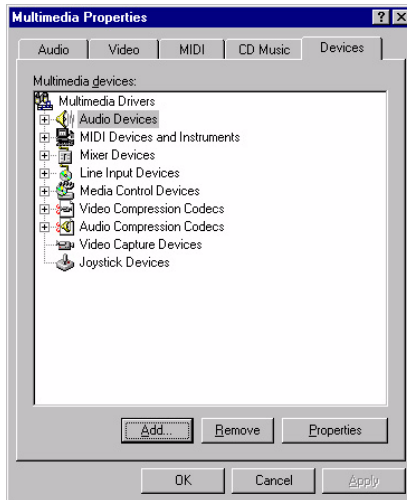


6.3.3 Windows NT drivers

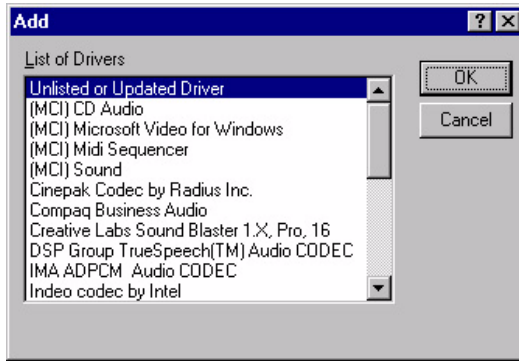
1. Click "Start" and select "Settings". Click "Control Panel" and double-click "Multimedia".



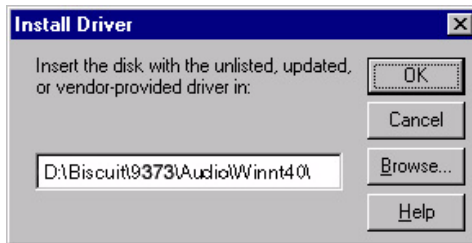
2. In the Multimedia Properties window, select the "Devices" tab. Then select the "Audio Devices" item, and click "Add...".



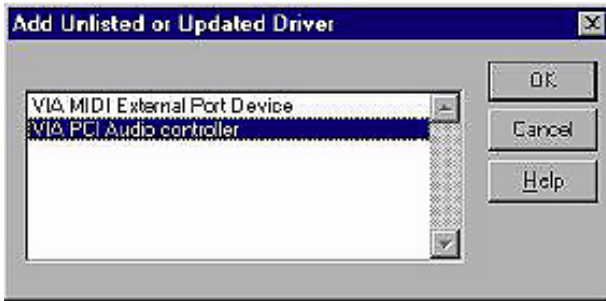
3. In the Add window, select the "Unlisted..." item and click "OK".



4. When the Install Driver window appears, insert the utility disc into the CD-ROM drive. Type: D:\Biscuit\9373\Audio\WinNT\ Then click "OK".



5. In the Add Unlisted or Updated Driver window, select the "VIA PCI Audio controller" item. Then click "OK".

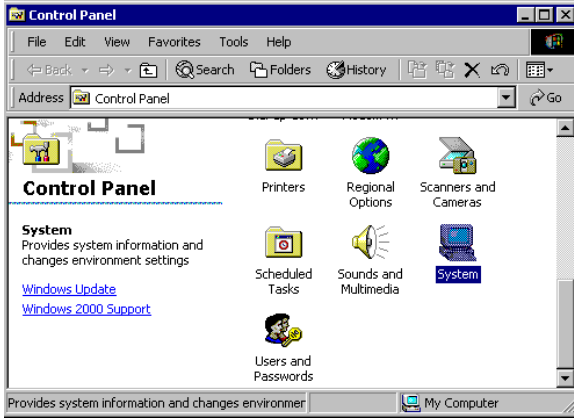


6. In the System Setting Change window, click "Restart Now".

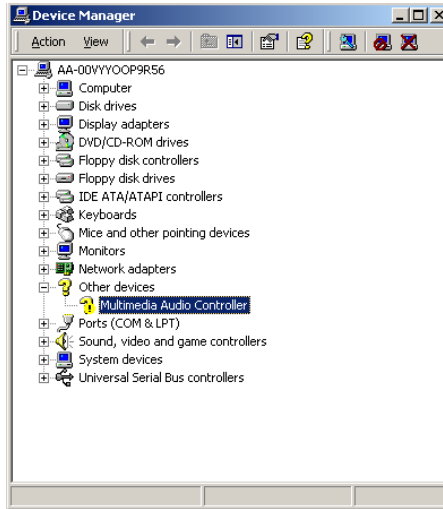


6.3.4 Windows 2000 Drivers

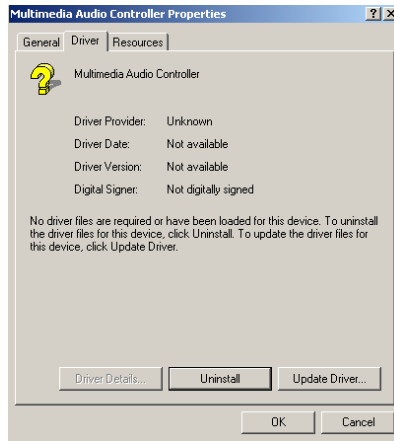
1. Select “System”, “Setting”, “Control Panel” and double click “system” icon.



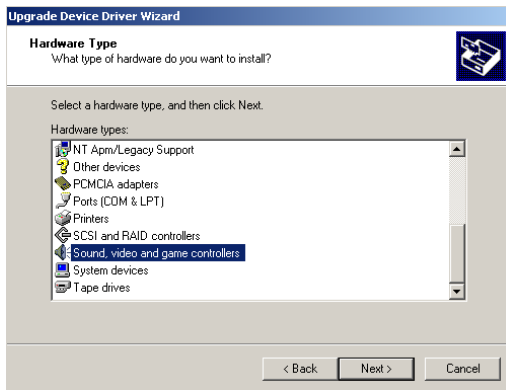
2. Choose “Multimedia Audio Controller” button.



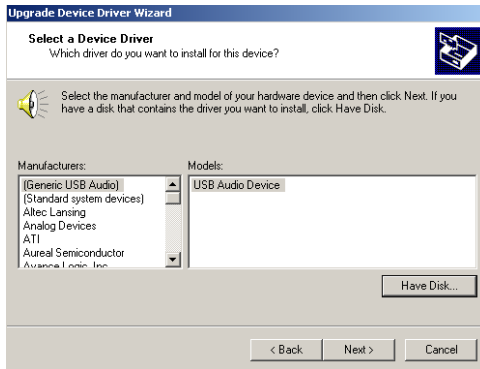
3. Choose “Driver button, press “Update Driver” button.



4. Choose “Sound, video and game controllers”, press “Next”



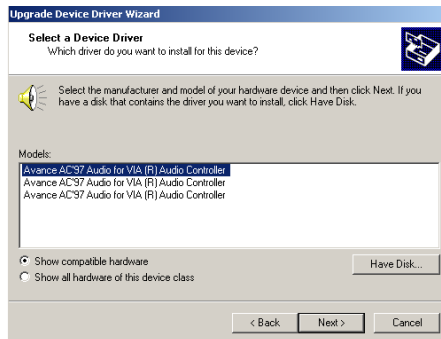
5. Click the “Have Disk...” button



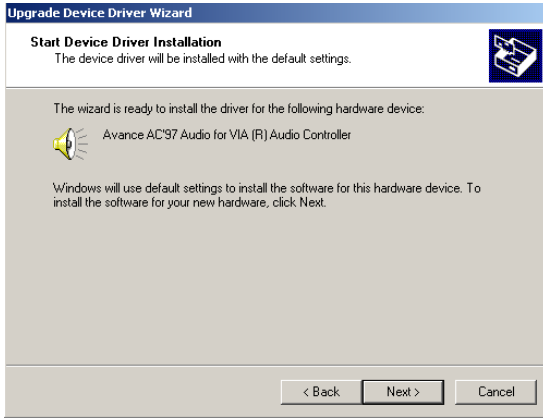
6. Type the path D:\Biscuit\9373\Audio\98se_Me_2k_xp\Win2000 press the “ok” button.



7. Click “Have Disk” button



8. Press “Next” button



9. Press “Finish” to reboot



PCI Bus Ethernet Interface

This chapter provides information on Ethernet configuration.

Sections include:

- Introduction
- Installation of Ethernet drivers for Windows 98/2000/NT
- Further information

Chapter 7 PCI Bus Ethernet Interface

7.1 Introduction

The PCM-9373 is equipped with a high performance 32-bit Ethernet chipset which is fully compliant with IEEE 802.3 100 Mbps CSMA/CD standards. It is supported by major network operating systems. It is also both 100Base-T and 10Base-T compatible. The medium type can be configured via the RSET8139.exe program included on the utility disk. The network boot feature can be utilized by incorporating the boot ROM image files for the appropriate network operating system. The boot ROM BIOS files are combined with system BIOS, which can be enabled/disabled in the BIOS setup.

7.2 Installation of Ethernet driver

Before installing the Ethernet driver, note the procedures below. You must know which operating system you are using in your PCM-9373 Series, and then refer to the corresponding installation flow chart. Then just follow the steps described in the flow chart. You will quickly and successfully complete the installation, even if you are not familiar with instructions for MS-DOS or Windows.

Note: *The windows illustrations in this chapter are examples only. Follow the steps and pay attention to the instructions which appear on your screen.*

7.2.1 Installation for MS-DOS and Windows 3.1

If you want to set up your Ethernet connection under the MS-DOS or Windows 3.1 environment, you should first check your server system model. For example, MS-NT, IBM-LAN server, and so on.

Then choose the correct driver to install in your biscuit PC.

The installation procedures for various servers can be found on the supplied CD-ROM, the correct path being:

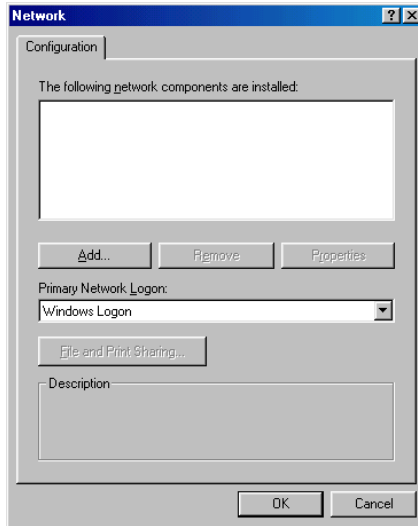
D:\Biscuit\9373\LAN\8139C\wfw311

7.2.2 Installation for Windows 98

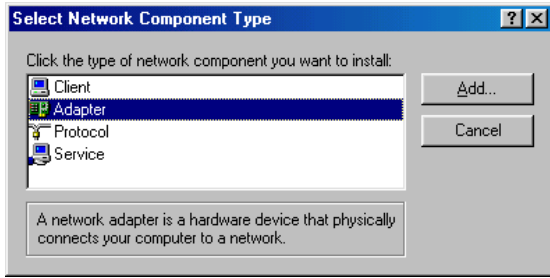
1.
 - a. Select "Start", "Settings". "Control Panel".
 - b. Double click "Network".



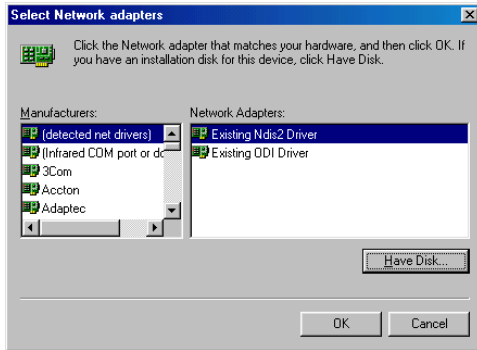
2.
 - a. Click "Add" and prepare to install network functions.



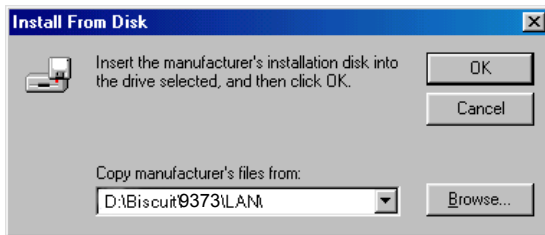
3. a. Select the "Adapter" item to add the Ethernet card.



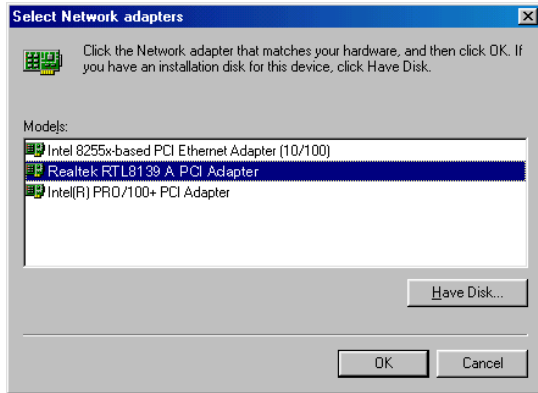
4. a. Click "Have Disk" to install the driver.



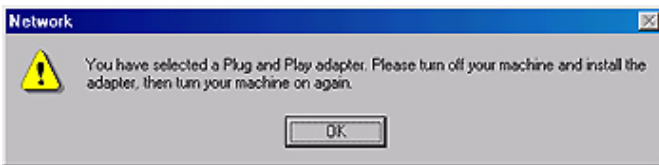
5. a. Insert the CD into the D: drive
b. Fill in "D:\Biscuit\9373\LAN?"
c. Click "OK"



6.
 - a. Choose the "Realtek RTL8139(A/B/C/8130) PCI Fast Ethernet" item.
 - b. Click "OK".

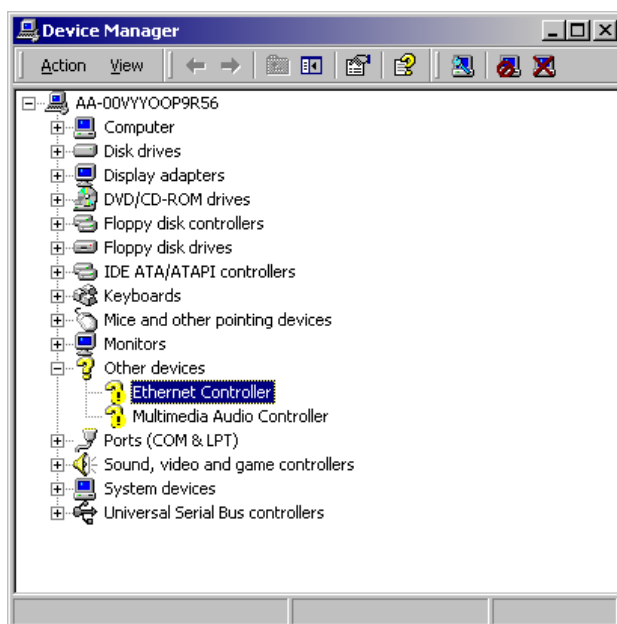


7.
 - a. Make sure the configurations of relative items are set correctly.
 - b. Click "OK" to reboot.

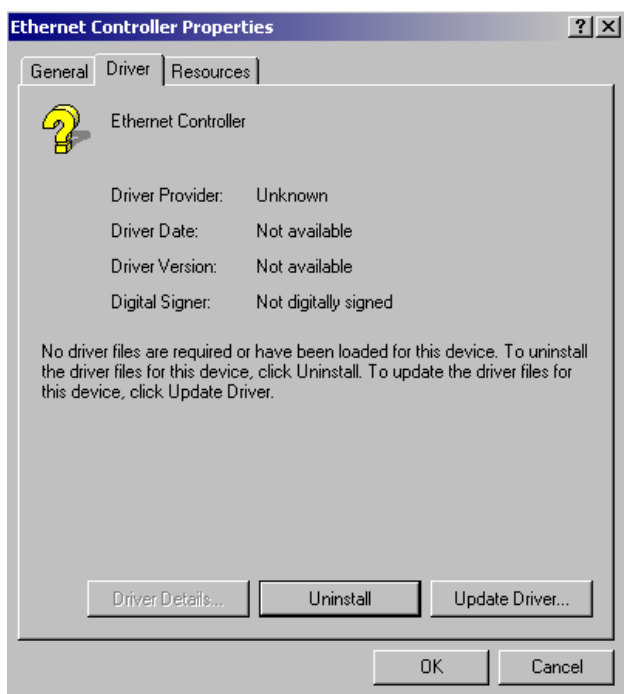


7.2.3 Installation for Windows 2000

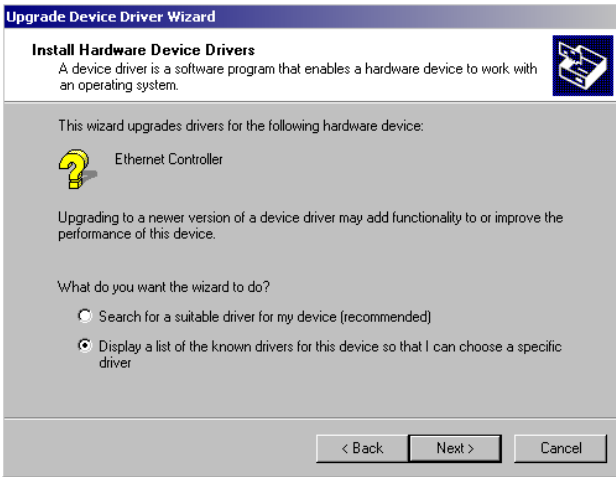
1. Open Device Manager,



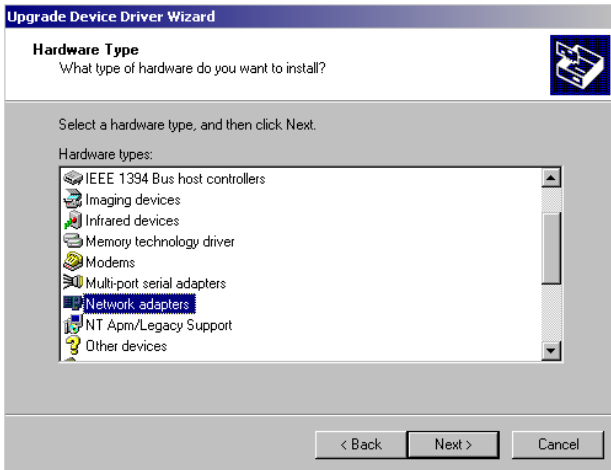
2.



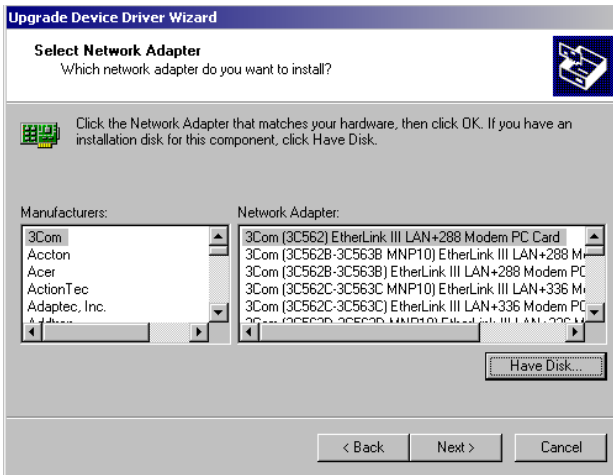
3.



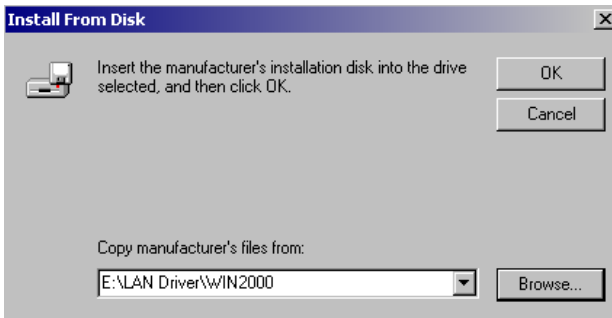
4.



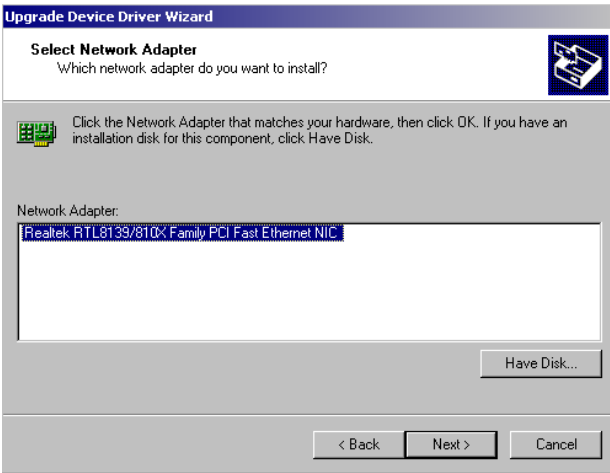
5.



6.



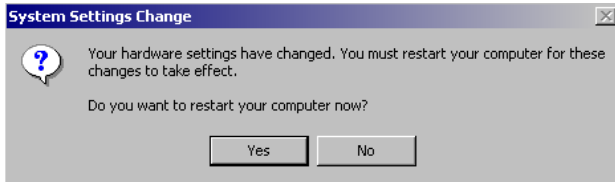
7.



8.

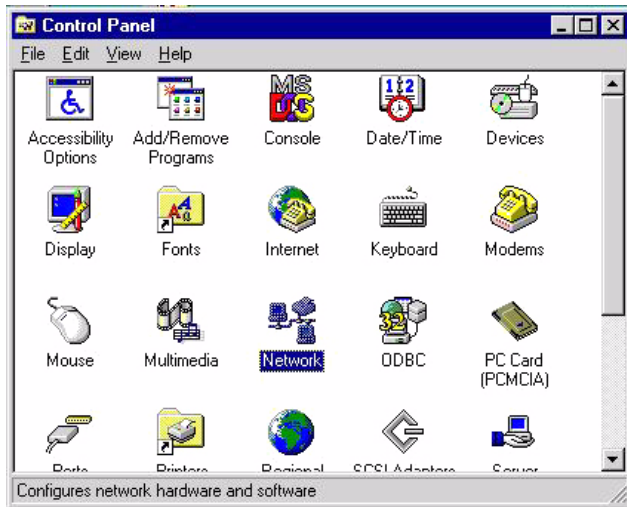


9.

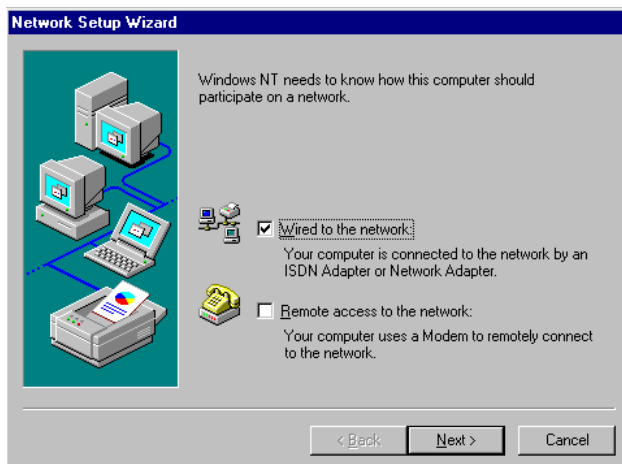


7.2.4 Installation for Windows NT

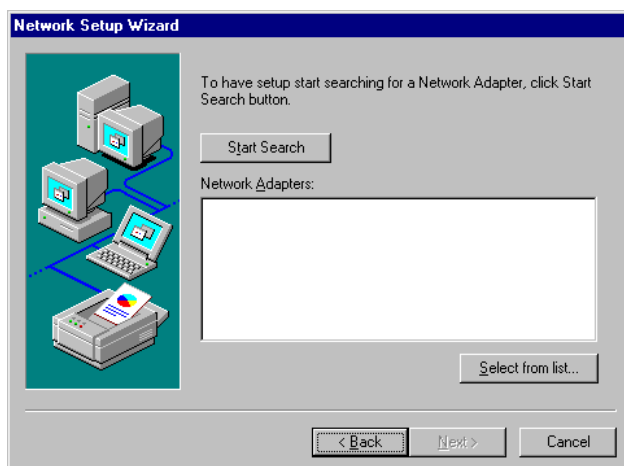
1. a. Select "Start", "Settings", "Control Panel"
- b. Double click "Network"



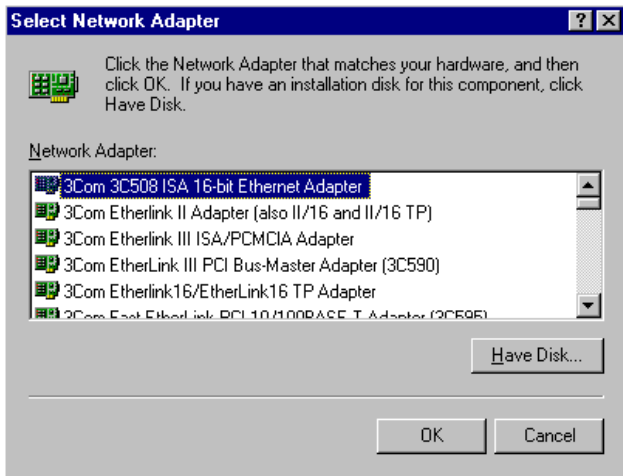
2. a. Choose type of network.
b. Click "Next"



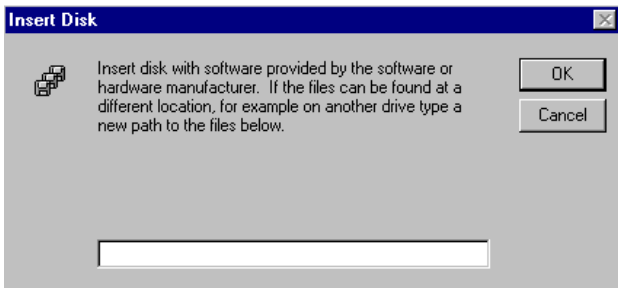
3. a. Click "Select from list..."



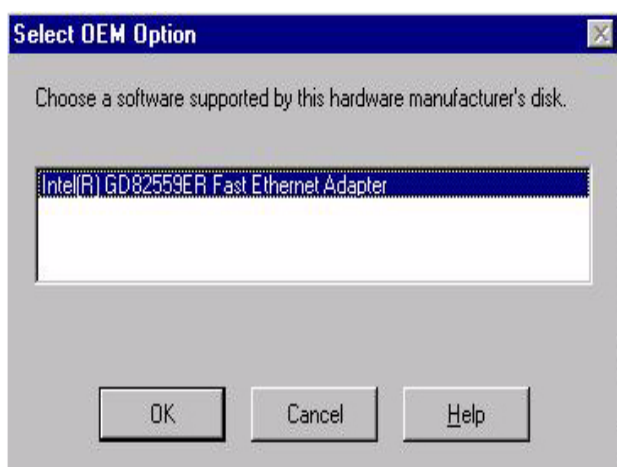
4. Click “Have Disk.”



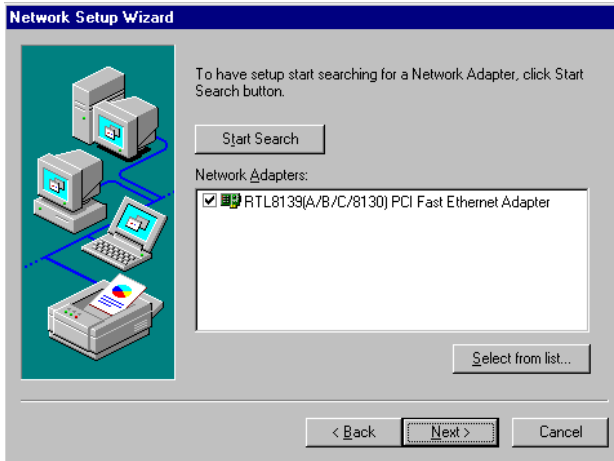
5. a. Insert the Utility CD ROM
b. Fill in the correct path:
D:\Biscuit\9373\LAN\8139C\winnt4
c. Click "OK".



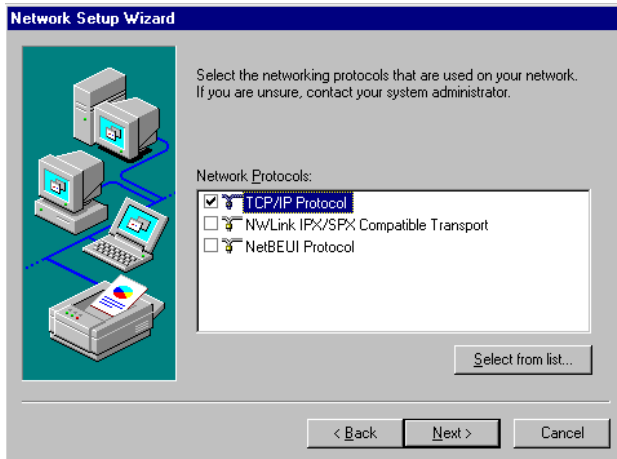
6. Check the highlighted item, and click “OK.”



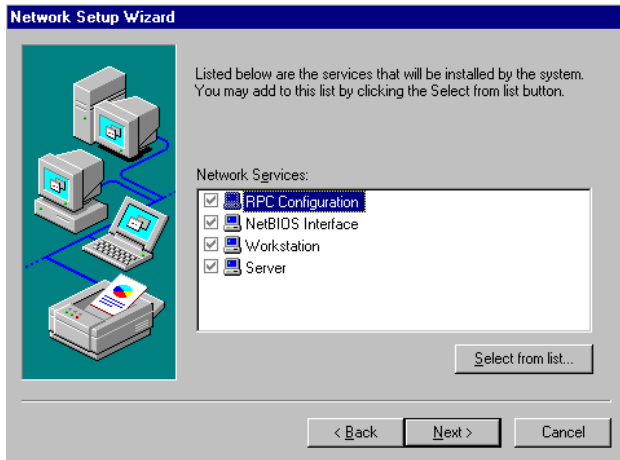
- Click "Next" to continue setup.



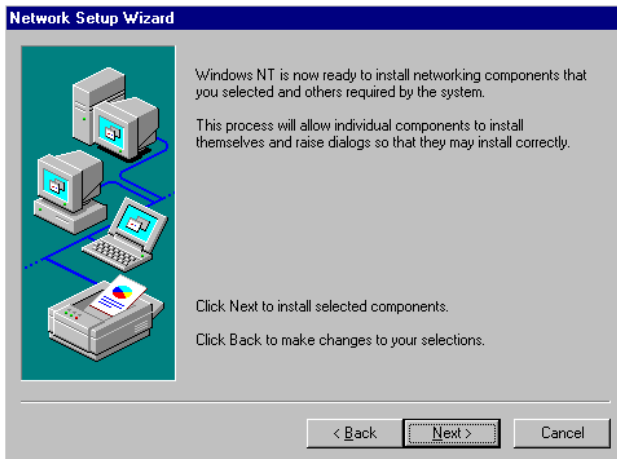
- Choose the networking protocols, then click "Next"



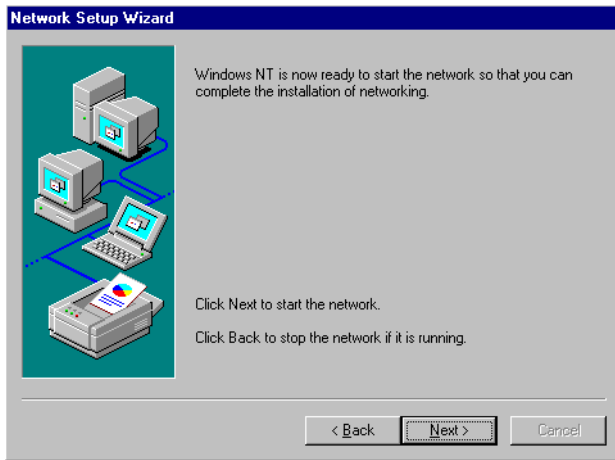
9. Select the correct Network Services then click "Next"



10. Click "Next" to continue setup.



11. Click “Next” to start the network.



7.3 Further information

Realtek website: www.realtek.com.tw

Intel website: www.intel.com

EMAC, Inc. websites: www.emacinc.com

Programming the Watchdog Timer

The PCM-9373 is equipped with a watchdog timer that resets the CPU or generates an interrupt if processing comes to a standstill for any reason. This feature ensures system reliability in industrial standalone or unmanned environments.

Appendix A Programming the Watchdog Timer

A.1 Supported Input Timing Modes

In order to program the watchdog timer, you must write a program which writes I/O port address 443 (hex). The output data is a value of time interval. The value range is from 01 (hex) to 3E (hex), and the related time interval is 1 sec. to 62 sec.

Data	Time Interval
01	1 sec.
02	2 sec.
03	3 sec.
04	4 sec.
.	.
.	.
.	.
3E	62 sec.

After data entry, your program must refresh the watchdog timer by rewriting the I/O port 443 (hex) while simultaneously setting it. When you want to disable the watchdog timer, your program should read I/O port 443 (hex).

The following example shows how you might program the watchdog timer in BASIC:

```
10 REM Watchdog timer example program
20 OUT &H443, data REM Start and restart the
   watchdog
30 GOSUB 1000 REM Your application task #1
40 OUT &H443, data REM Reset the timer
50 GOSUB 2000 REM Your application task #2
60 OUT &H443, data REM Reset the timer
70 X=INP (&H443) REM Disable the watchdog timer
80 END

1000 REM Subroutine #1, your application task
.
.
.
```



```
1070  RETURN
2000  REM  Subroutine #2, your application task
      .
      .
      .
2090  RETURN
```


Installing PC/104 Modules

This appendix gives instructions for installing PC/104 modules.

Appendix B Installing PC/104 Modules

B.1 Installing PC/104 Modules

The PCM-9373's PC/104 connectors give you the flexibility to attach PC/104 modules.

Installing these modules on the PCM-9373 is quick and simple. The following steps show how to mount the PC/104 modules:

1. Remove the PCM-9373 from your system, paying particular attention to the safety instructions already mentioned above.
2. Make any jumper or link changes required to the CPU card now. Once the PC/104 module is mounted you may have difficulty in accessing these.
3. Normal PC/104 modules have male connectors and mount directly onto the main card. (Refer to the diagram on the following page.)
4. Mount the PC/104 module onto the CPU card by pressing the module firmly but carefully onto the mounting connectors.
5. Secure the PC/104 module onto the CPU card using the four mounting spacers and screws.

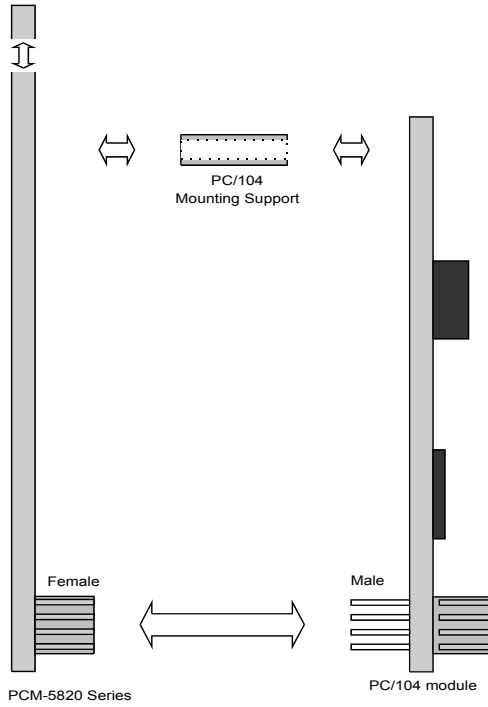


Figure B.1: PC/104 module mounting diagram

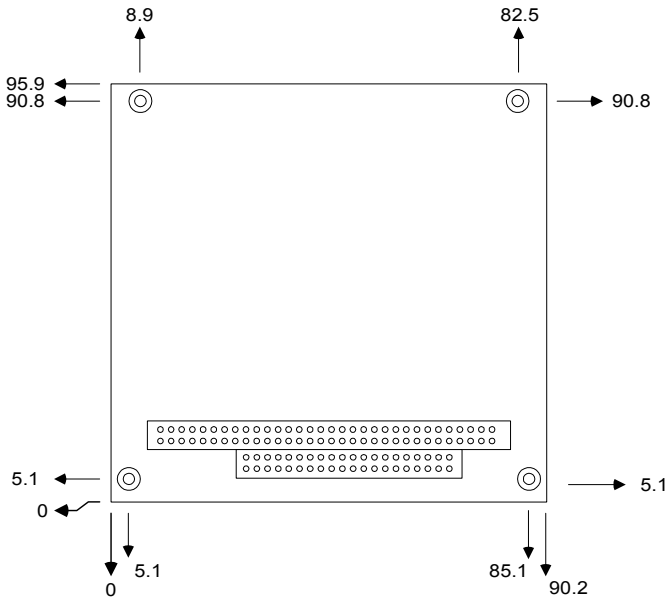


Figure B.2: PC/104 module dimensions (mm) (± 0.1)

Table B.1: PC/104 connectors (CN10)

Pin Number	Signal		Signal	
	Row A	Row B	Row C	Row D
0	ó	ó	0 V	0 V
1	IOCHCHK*	0 V	SBHE*	MEMCS16*
2	SD7	RESETDRV	LA23	IOCS16*
3	SD6	+5 V	LA22	IRQ10
4	SD5	IRQ9	LA21	IRQ11
5	SD4	-5 V	LA20	IRQ12
6	SD3	DRQ2	LA19	IRQ15
7	SD2	-12 V	LA18	IRQ14
8	SD1	ENDXFR*	LA17	DACK0*

Table B.1: PC/104 connectors (CN10)

9	SD0	+12 V	MEMR*	DRQ0
10	IOCHRDY	N/C	MEMW*	DACK5*
11	AEN	SMEMW*	SD8	DRQ5
12	SA19	SMEMR*	SD9	DACK6*
13	SA18	IOW*	SD10	DRQ6
14	SA17	IOR*	SD11	DACK7*
15	SA16	DACK3*	SD12	DRQ7
16	SA15	DRQ3	SD13	+5 V
17	SA14	DACK1*	SD14	MASTER*
18	SA13	DRQ1	SD15	0 V
19	SA12	REFRESH*	KEY	0 V
20	SA11	SYSCLK	ó	ó
21	SA10	IRQ7	ó	ó
22	SA9	IRQ6	ó	ó
23	SA8	IRQ5	ó	ó
24	SA7	IRQ4	ó	ó
25	SA6	IRQ3	ó	ó
26	SA5	DACK2*	ó	ó
27	SA4	TC	ó	ó
28	SA3	BALE	ó	ó
29	SA2	+5 V	ó	ó
30	SA1	OSC	ó	ó
31	SA0	0 V	ó	ó
32	0 V	0 V	ó	ó

* active low

Pin Assignments

This appendix contains information of a detailed or specialized nature. It includes:

- CPU Fan Power Connector
- Ethernet 10/100Base-T Connector
- Audio Connectot
- Main Power Connector
- Keyboard and PS/2 Mouse Connector
- Floppy Drive Connector
- IDE (1st and 2nd) HDD Connector
- Parallel Port Connector
- Power & HDD LED,
- USB Connector
- Backlight Connector
- CRT Display Connector
- Flat Panel Connector
- Ext. Flat Panel Connector
- LCD Signal Mapping
- Peripheral power connector
- LVDS Interface Connector
- COM1 RS232 series port
- COM2 RS-232/422/485 serial port
- CompactFlash Card Connector
- ATX Power Feature Connector

Appendix C Pin Assignments

C.1 CPU Fan Power Connector (CN2)



Table C.1: IR connector (FAN 1)

Pin	Signal
1	Fan speed signal input
2	+5V
3	GND

C.2 Ethernet 10/100Base-T Connector (CN17)

Table C.2: Ethernet 10/100Base-T connector (CN17)

Pin	Signal
1	XMT+
2	XMT-
3	RCV+
4	N/C
5	N/C
6	RCV-
7	N/C
8	N/C

C.3 Audio Connector (CN14)

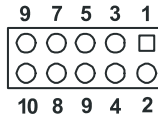


Table C.3: Audio connector (CN14)

Pin	Signal	Pin	Signal
1	LINE OUT R	2	LINE IN R
3	GND	4	GND
5	LINE OUT L	6	LINE IN L
7	GND	8	GND
9	MIC IN	10	Reserved for MIC2

C.4 Main Power Connector (CN7)



Table C.4: Main Power Connector (CN7)

Pin	Signal
1	+12 V
2	GND
3	GND
4	+5 V

C.5 Keyboard and PS/2 Mouse Connector (CN18)


Table C.5: Keyboard and mouse connector (CN18)

Pin	Signal
1	KB DATA
2	MS DATA
3	GND
4	VCC
5	KB CLOCK
6	MS CLOCK

C.6 Floppy Disk Drive Connector (CN23)

Table C.6: Floppy Disk Drive Connector (CN23)

Pin	Signal	Pin	Signal
1	+5V	2	INDEX*
3	+5V	4	Disk Select A*
5	+5V	6	Disk Change*
7	NC	8	NC
9	NC	10	Motor 0*
11	NC	12	Direction*
13	NC	14	STEP*
15	GND	16	Write Data*
17	GND	18	Write Enable*
19	GND	20	TRACK 0*
21	GND	22	Write Protect*
23	GND	24	Read Data*
25	GND	26	Head Select*

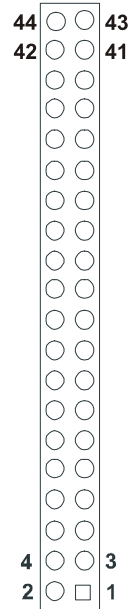


*low active

C.7 IDE Hard Drive Connector (CN11)

Table C.7: IDE HDD connector (CN11)

Pin	Signal	Pin	Signal
1	IDE RESET*	2	GND
3	DATA 7	4	DATA 8
5	DATA 6	6	DATA 9
7	DATA 5	8	DATA 10
9	DATA 4	10	DATA 11
11	DATA 3	12	DATA 12
13	DATA 2	14	DATA 13
15	DATA 1	16	DATA 14
17	DATA 0	18	DATA 15
19	SIGNAL GND	20	N/C
21	HDD 0	22	GND
23	IO WRITE	24	GND
25	IO READ	26	GND
27	HD READY	28	N/C
29	HDACK 0*	30	GND
31	IRQ14	32	N/C
33	ADDR 1	34	N/C
35	ADDR 0	36	ADDR 2
37	HARD DISK SELECT 0*	38	HARD DISK SELECT 1*
39	IDE ACTIVE*	40	GND
41	Vcc	42	Vcc
43	GND	44	NC



* low active

C.8 Parallel Port Connector (CN15)

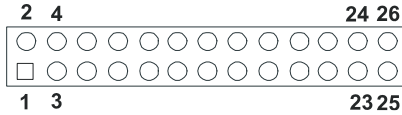


Table C.8: Parallel Port Connector (CN15)

Pin	Signal	Pin	Signal
1	STROBE*	2	AUTOFD*
3	D0	4	ERR
5	D1	6	INIT*
7	D2	8	SLCTINI*
9	D3	10	GND
11	D4	12	GND
13	D5	14	GND
15	D6	16	GND
17	D7	18	GND
19	ACK*	20	GND
21	BUSY	22	GND
23	PE	24	GND
25	SLCT	26	N/C

* low active

C.9 Power & HDD LED Connector (CN16)

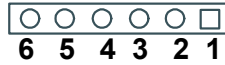


Table C.9: Power & HDD LED Connector (CN16)

Pin	Signal
1	+5V
2	GND
3	power LED+ (+5V)
4	power LED- (GND)
5	HDD LED +
6	HDD LED -

C.10 USB Connector (CN19)

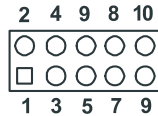


Table C.10: USB Connector (CN19)

Pin	Signal	Pin	Signal
1	+5 V	2	+5 V
3	UV-	4	UV-
5	UV+	6	UV+
7	GND	8	GND
9	Chassis GND	10	N/C

C.11 LCD Inverter Backlight Connector (CN5)

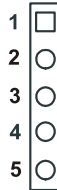


Table C.11: LCD Inverter Backlight Connector (CN5)

Pin	Signal
1	+12 V
2	GND
3	ENABKL
4	VBR
5	+5 V

C.12 CRT Display Connector (CN21)

Table C.12: CRT Display Connector (CN21)

Pin	Signal	Pin	Signal
1	Red	9	VDDC
2	Green	10	GND
3	Blue	11	N/C
4	N/C	12	DDCSDA
5	GND	13	H-SYNC
6	GND	14	V-SYNC
7	GND	15	DDCSCL
8	GND		

C.13 Flat Panel Connector (CN4)

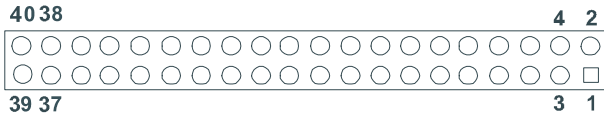


Table C.13: Flat Panel Connector (CN4)

Pin	Signal	Pin	Signal
1	VDDSAFE5 (+5v output)	2	VDDSAFE5 (+5v output)
3	GND	4	GND
5	VDDSAFE3 (+3.3 v output)	6	VDDSAFE3 (+3.3 v output)
7	N/C	8	GND
9	P0	10	P1
11	P2	12	P3
13	P4	14	P5
15	P6	16	P7
17	P8	18	P9
19	P10	20	P11
21	P12	22	P13
23	P14	24	P15
25	P16	26	P17
27	P18	28	P19
29	P20	30	P21
31	P22	32	P23
33	GND	34	GND
35	SHFCLK	36	FLM
37	M/DE	38	LP
39	N/C	40	ENAVEE

Note: *The model number of the CN4 socket is DF13A-40DP-1.25V (Hirose Electric Co., Ltd.)*

C.14 Extended Flat Panel Display Connector (CN3)

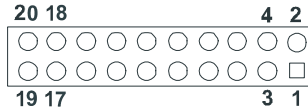


Table C.14: Extended Flat Panel Display Connector (CN3)

Pin	Signal	Pin	Signal
1	GND	2	GND
3	P24	4	P25
5	P26	6	P27
7	P28	8	P29
9	P30	10	P31
11	P32	12	P33
13	P34	14	P35
15	GND	16	GND
17	N/C	18	N/C
19	N/C	20	N/C

Note: *The model number of the CN3 socket is DF13A-20DP-1.25V (Hirose Electric Co., Ltd.)*

C.15 LCD Signal Mapping

Table C.15: LCD Signal Mapping

Pin Name	16-bit DSTN	24-bit DSTN	18-bit TFT	24-bit TFT	36-bit TFT
PD0		LB3		B0	R00
PD1		LB2		B1	R10
PD2	LB1	LB1	B0	B2	R01
PD3	LB0	LB0	B1	B3	R11
PD4		UB3	B2	B4	R02
PD5		UB2	B3	B5	R12
PD6	UB1	UB1	B4	B6	R03
PD7	UB0	UB0	B5	B7	R13
PD8		LG3		G0	R04
PD9	LG2	LG2		G1	R14
PD10	LG1	LG1	G0	G2	R05
PD11	LG0	LG0	G1	G3	R15
PD12		UG3	G2	G4	G00
PD13	UG2	UG2	G3	G5	G10
PD14	UG1	UG1	G4	G6	G01
PD15	UG0	UG0	G5	G7	G11
PD16		LR3		R0	G02
PD17	LR2	LR2		R1	G12
PD18	LR1	LR1	R0	R2	G03
PD19	LR0	LR0	R1	R3	G13
PD20		UR3	R2	R4	G04
PD21	UR2	UR2	R3	R5	G14
PD22	UR1	UR1	R4	R6	G05
PD23	UR0	UR0	R5	R7	G15
PD24					B00
PD25					B10
PD26					B01
PD27					B11
PD28					B02
PD29					B12
PD30					B03
PD31					B13
PD32					B04
PD33					B14
PD34					B05
PD35					B15

C.16 LVDS Connector (CN6)

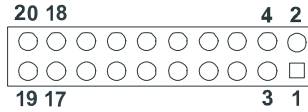


Table C.16: LVDS Connector (CN6)

Pin	Signal	Pin	Signal
1	GND	2	GND
3	TX0+(Channel 1)	4	TX0+(Channel 2)
5	TX0-(Channel 1)	6	TX0-(Channel 2)
7	TX1+(Channel 1)	8	TX1+(Channel 2)
9	TX1-(Channel 1)	10	TX1-(Channel 2)
11	TX2+(Channel 1)	12	TX2+(Channel 2)
13	TX2-(Channel 1)	14	TX2-(Channel 2)
15	TX3+(Channel 1)	16	TX3+(Channel 2)
17	TX3-(Channel 1)	18	TX3-(Channel 2)
19	VDD (+3.3V)	20	VDD (+3.3V)

C.17 Peripheral Power Connector (CN9)



Table C.17: Peripheral Power Connector (CN9)

Pin	Signal
1	-5 V
2	GND
3	-12 V

C.18 COM1 RS-232 serial port (CN20)

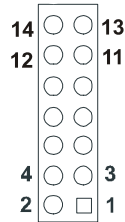
Table C.18: COM1 RS-232 serial port (CN20)

Pin	Signal
1	DCD
2	RxD
3	TxD
4	DTR
5	GND
6	DSR
7	RTS
8	CTS
9	RI

C.19 COM2 RS232/422/485 series port (CN12)

Table C.19: COM2 RS-232/422/485 series port

Pin	RS-232 port	RS-422 port	RS-485 port
1	DCD	N/C	N/C
2	DSR	N/C	N/C
3	RXD	N/C	N/C
4	RTS	N/C	N/CN/C
5	TxD	N/C	N/C
6	CTS	N/C	N/C
7	DTR	N/C	N/C
8	RI	N/C	N/C
9	GND	N/C	N/C
10	GND	N/C	N/C
11	N/C	TxD+	DATA+
12	N/C	TxD-	DATA-
13	N/C	RxD+	N/C
14	N/C	RxD-	N/C



C.20 CompactFlash Card Connector (CN22)

Table C.20: CompactFlash Card Connector (CN22)

Pin	Signal	Pin	Signal
1	GND	2	D03
3	D04	4	D05
5	D06	6	D07
7	*CS0	8	A10
9	*ATA SEL	10	A09
11	A08	12	A07
13	+5 V	14	A06
15	A05	16	A04
17	A03	18	A02
19	A01	20	A00
21	D00	22	D01
23	D02	24	-IOCS16
25	*CD2	26	-CD1
27	D11	28	D12
29	D13	30	D14
31	D15	32	-CS1
33	*VS1	34	-IORD
35	*IOWR	36	-WE
37	INTRQ	38	+5 V
39	*CSEL	40	-VS2
41	*RESER	42	IORDY
43	*INPACK	44	-REG
45	*DASP	46	-PDIAG
47	D08	48	D09
49	D10	50	GND

* low active

C.21 ATX Power Feature Connector (CN1)



Table C.21: ATX Power Feature Connector (CN1)

Pin	Signal
1	5VSB (Stand by voltage)
2	GND
3	PS. ON#

C.22 IR connector (CN13)

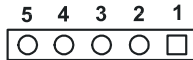


Table C.22: IR Connector (CN26)

Pin	Signal
1	VCC (5 V)
2	N.C.
3	IR receive
4	GND
5	IR transmit

System Assignments

This appendix contains information of a detailed nature. It includes:

- System I/O ports
- 1st MB memory map
- DMA channel assignments
- Interrupt assignments

Appendix D System Assignments

D.1 System I/O Ports

Table D.1: System I/O ports

Addr. range (Hex)	Device
000-01F	DMA controller
020-021	Interrupt controller 1, master
040-05F	8254 timer
060-06F	8042 (keyboard controller)
070-07F	Real-time clock, non-maskable interrupt (NMI) mask
080-09F	DMA page register
0A0-0BF	Interrupt controller 2
0C0-0DF	DMA controller
0F0	Clear math co-processor
0F1	Reset math co-processor
0F8-0FF	Math co-processor
1F0-1F8	Fixed disk
200-207	Reserved (Game I/O)
278-27F	Reserved (Parallel port 2,LTP3)
2E8-2EF	Reserved (Series port 4)
2F8-2FF	Serial port 2
300-31F	Prototype card
360-36F	Reserved
378-37F	Parallel printer port 1 (LPT 2)
380-38F	SDLC, bisynchronous 2
3A0-3AF	Bisynchronous 1
3B0-3BF	Monochrome display and printer adapter (LPT1)
3C0-3CF	Reserved
3D0-3DF	Color/graphics monitor adapter
3E8-3EF	Reserved (Series port 3)
3F0-3F7	Diskette controller
3F8-3FF	Serial port 1

* PNP audio I/O map range from 220 ~ 250H (16 bytes)

MPU-401 select from 300 ~ 330H (2 bytes)

D.2 1st MB memory map

Table D.2: 1st MB memory map

Addr. range (Hex)	Device
F0000h - FFFFFh	System ROM
*CC000h - EFFFFh	Unused (reserved for Ethernet ROM)
C0000h - CBFFFh	Expansion ROM (for VGA BIOS)
B8000h - BFFFFh	CGA/EGA/VGA text
B0000h - B7FFFh	Unused
A0000h - AFFFFh	EGA/VGA graphics
00000h - 9FFFFh	Base memory

* If Ethernet boot ROM is disabled (Ethernet ROM occupies about 16 KB)

* E0000 - EFFFF is reserved for BIOS POST

D.3 DMA channel assignments

Table D.3: DMA channel assignments

Channel	Function
0	Available
1	Available (audio)
2	Floppy disk (8-bit transfer)
3	Available (parallel port)
4	Cascade for DMA controller 1
5	Available
6	Available
7	Available

* Audio DMA select 1, 3, or 5

** Parallel port DMA select 1 (LPT2) or 3 (LPT1)

D.4 Interrupt assignments

Table D.4: Interrupt assignments

Interrupt#	Interrupt source
IRQ 0	Interval timer
IRQ 1	Keyboard
IRQ 2	Interrupt from controller 2 (cascade)
IRQ 3	COM2
IRQ 4	COM1
IRQ 5	Reserved (COM4)
IRQ 6	FDD
IRQ 7	LPT1
IRQ 8	RTC
IRQ 9	Reserved (audio)
IRQ 10	Reserved (COM3)
IRQ 11	Reserved for watchdog timer
IRQ 12	PS/2 mouse
IRQ 13	INT from co-processor
IRQ 14	Primary IDE
IRQ 15	Secondary IDE for CFC

* Ethernet interface IRQ select: 9, 11, 15

* PNP audio IRQ select: 9, 11, 15

* PNP USB IRQ select: 9, 11, 15

* PNP ACPI IRQ select: 9, 11, 15

Appendix

E

Optional Extras for the PCM-9373

Appendix E Optional Extras for the PCM-9373

E.1 Optional LCD cables 10.4" TFT LCD panel (CN14)

Table E.1: Optional LCD cables 10.4" TFT LCD panel

Part no.	Cable description	Panel type
1700090501	Cable DF9 (2 mm) 50 cm	Toshiba LTM10C042
1703440151	Wire 30P/44P 15 cm	Toshiba LTM12C275A

Note: The above LCD cables have links via 24-bit LCD cable adaptor (E.6) to connect to PCM-9373

E.2 Optional USB cable (CN19)

Optional USB cable (2-channel) Part no: 1703100261

Optional USB Cable for MBPC-200 Part no. 1703100121

E.3 ATX Power Control Cable (CN1)

part no.:1703070101

E.4 Optional 24 bit LCD cable adaptor

This converts the Hirose “DF20A” type connector to a 20 x 2- pin header. It supports 3.3 V or 5 V via pins 5 and 6.

part no: 9681000041 (for 5 V LCD panel)

part no: 9681000040 (for 3.3 V LCD panel)

E.5 +5V Fan for PCM-9373 heat sink

part no: 1759200850

Appendix

F

Mechanical Drawings

Appendix F Mechanical Drawings

F.1 Mechanical Drawings

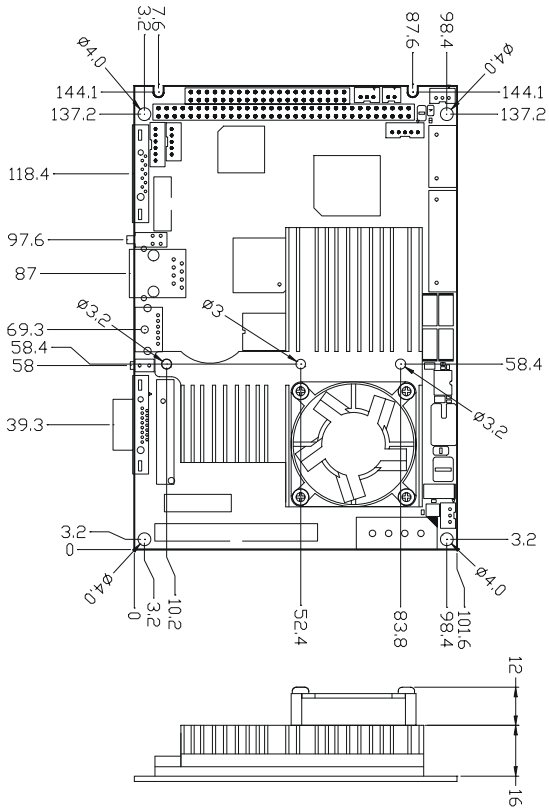


Figure F.1: PCM-9373 Mechanical Drawing (Component Side)

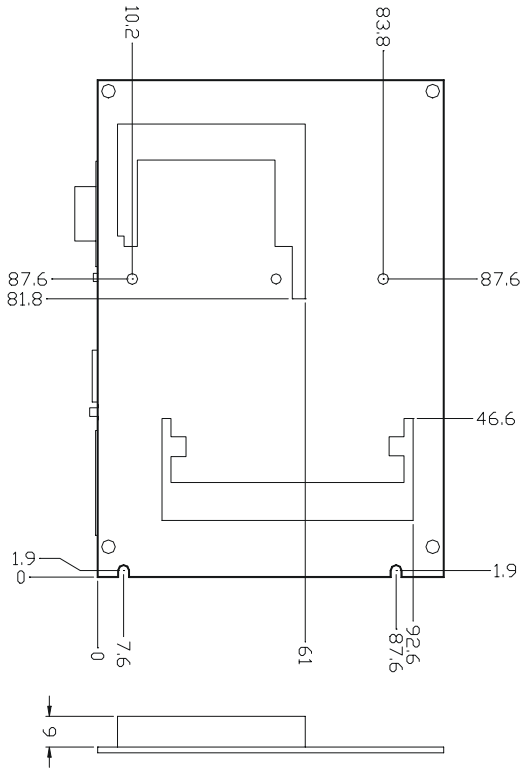


Figure F.2: PCM-9373 Mechanical Drawing (Solder Side)

