

How to install Windows XP on Vortex86DX

Due to the IDE incompatible issue, users should install the IDE driver manually when install the Windows XP professional and Windows 2000 on the sample version of Vortex86DX, After the installation, users should install the correct LAN and VGA driver.

LAN and Display Driver:

ftp://icop.com.tw/DIS_info/VDX/operating system/VDX_WinXP/VxDX-WinXP.rar

This document only applies to the Vortex86DX sample version B (c code 08xx-B-PB available date November 2008) and IDE interface will be fixed on mass production version C (code available date Q2 2009).

---Required hardware---

- Vortex86DX CPU board with 256MB DDR2 DRAM or above.
- USB Floppy Drive or 1.44" Floppy Drive.
- USB Keyboard / Mouse (or PS/2 Keyboard / Mouse)
- IDE CABLE
- CD-ROM
- Compact Flash 2GB (or above), IDE Flash Disk or Hard Disk.

---Required software---

- Windows XP Service Pack 1/2/3 installation CD. (English version is preferred)
- IDE Driver for Vortex86DX.

---BIOS setting--- (When you use UDMA4 mode of CF or DOM, BIOS setting can enhance the boot up speed)

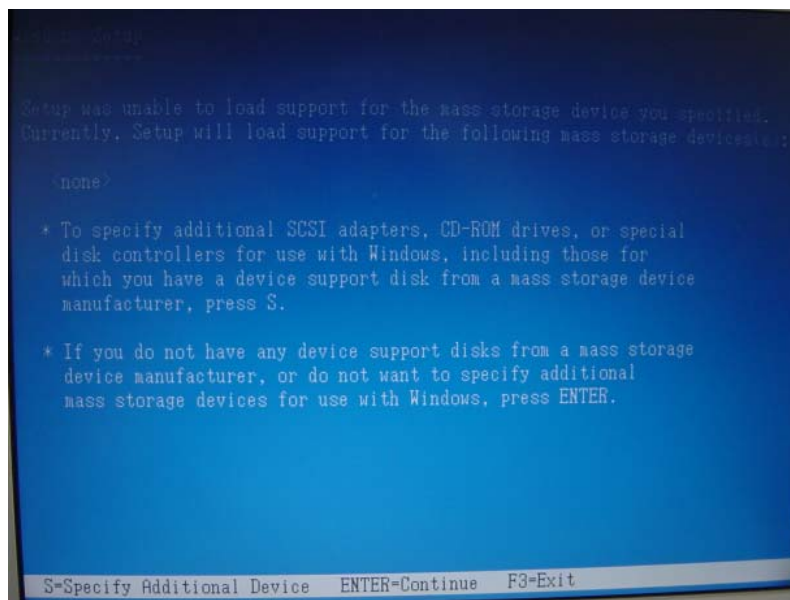
- Go to the Advanced and make "**Onboard IDE operate Mode**" "**Native mode**"
- Go to the PCI PnP and make the "**PCI IDE Bus Master**" is "**Enable**"

---STEPS--

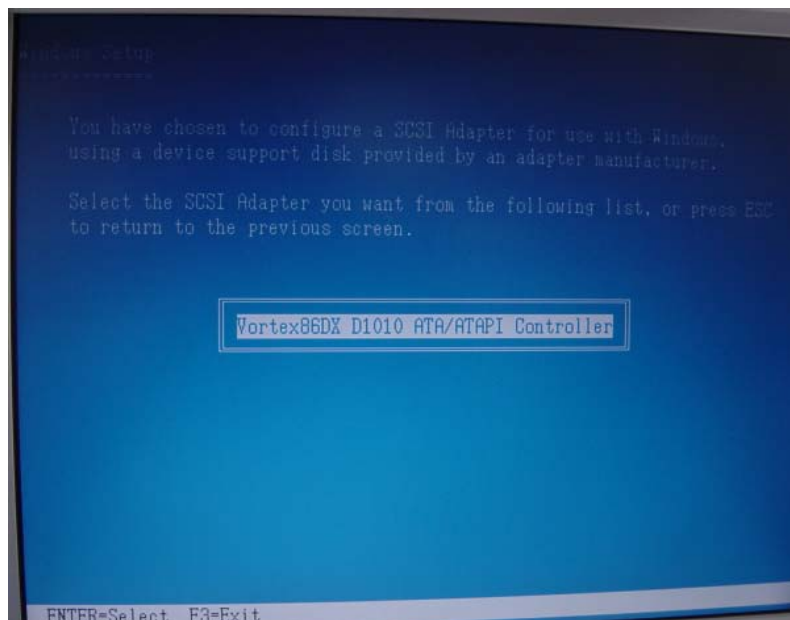
- 1, Copy the folder of attached driver called "Windows" and "txtsetup.oem" to USB Floppy Drive or 1.44" Floppy Drive.
- 2, Make sure your platform is connected with above USB Floppy Drive (or 1.44" Floppy Drive), Keyboard / Mouse, CD ROM (with XP CD) and Compact Flash (or Hard disk).
- 3, Power-on the platform and press the F11 to choose CD-ROM booting selection.
Also, make sure the BIOS released date is after 2008/7/18.
- 4, Press F6 when you see the "Press F6 if you need to install a third party SCSI or RAID driver..." (see below photo).



5, Press "S" key to choice the driver source, Floppy or USB.

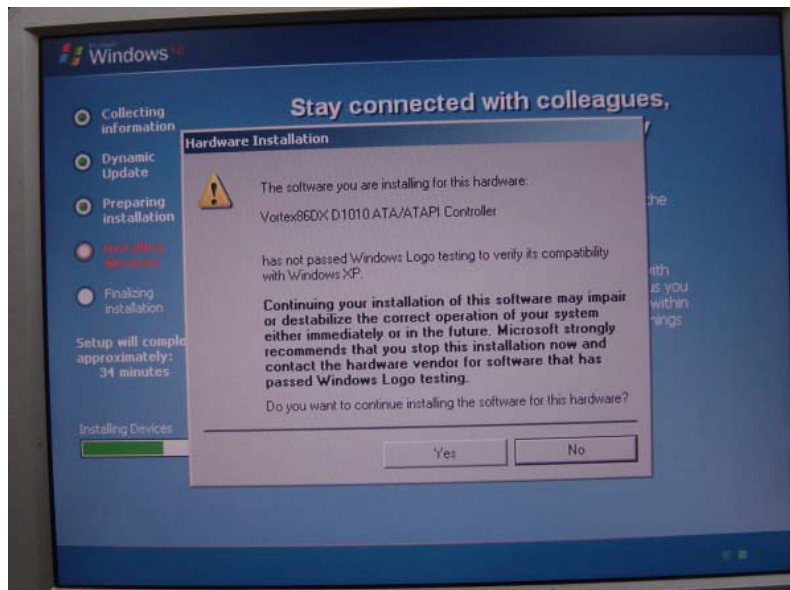


6. Choice "Vortex86DX D1010 ATA/ATAPI Controller" then press the "Enter Key".



7. And then, please follow the installation steps.

8. When you see the screen as below, please click “YES” to continue.



9. Continue the installation.

10. After the first time boot up, you should install the correct LAN and VGA driver.

- If you are using Vortex86DX build-in LAN controller, please use attached LAN driver.
- If you are using XGI Z9s VGA chip, please use attached VGA driver.

11. Done.
